

4348 WOODLANDS BOULEVARD

The Point at Founders Pkwy

Premier class A office and medical
office for lease in Castle Rock



Rick Egitto
CRE Solutions
303 908 0706
rick@ColoradoCRE.com

CRE INVESTMENT
SOLUTIONS BROKERAGE
ADVISORY

The Point at Founders Pkwy

The property provides excellent visibility, outstanding views, and convenient access to Interstate 25 via Founders Parkway.

Located at the SEC of Founders Parkway and Woodlands Boulevard, the property is surrounded by numerous food and service amenities within a few minutes drive.

While the space is currently being used as straight office, the suites can be easily converted into medical office.

5 minutes to AdventHealth Castle Rock Hospital.

Address	4348 Woodlands Blvd
Available	Suite 200 - 3,954 sf <i>(will subdivide to suit user)</i> Suite 135 - 2,039 sf
Term	7-10 years
Lease rate	Contact broker
OpEx	\$16.88 psf (2024)
Parking	Free surface parking



Monument signage



Second floor lobby



First floor lobby



Why Castle Rock?



A vibrant community of over 80,000 residents thrives in Castle Rock.



With a projected 15% growth on the horizon, Castle Rock's population is on the rise.



A strong office submarket with diversified industries boasts a low vacancy rate of 5.7%.



The SafeWise annual Safest Cities report ranked Castle Rock No. 6 (up from No. 13 in 2023) safest city in Colorado.



Castle Rock offers easy access to both Downtown Denver and the Denver Tech Center, just a short drive away.



The community works to enhance the Town's self sufficiency and foster a strong local economy.



The Point at Founders Pkwy

Location map

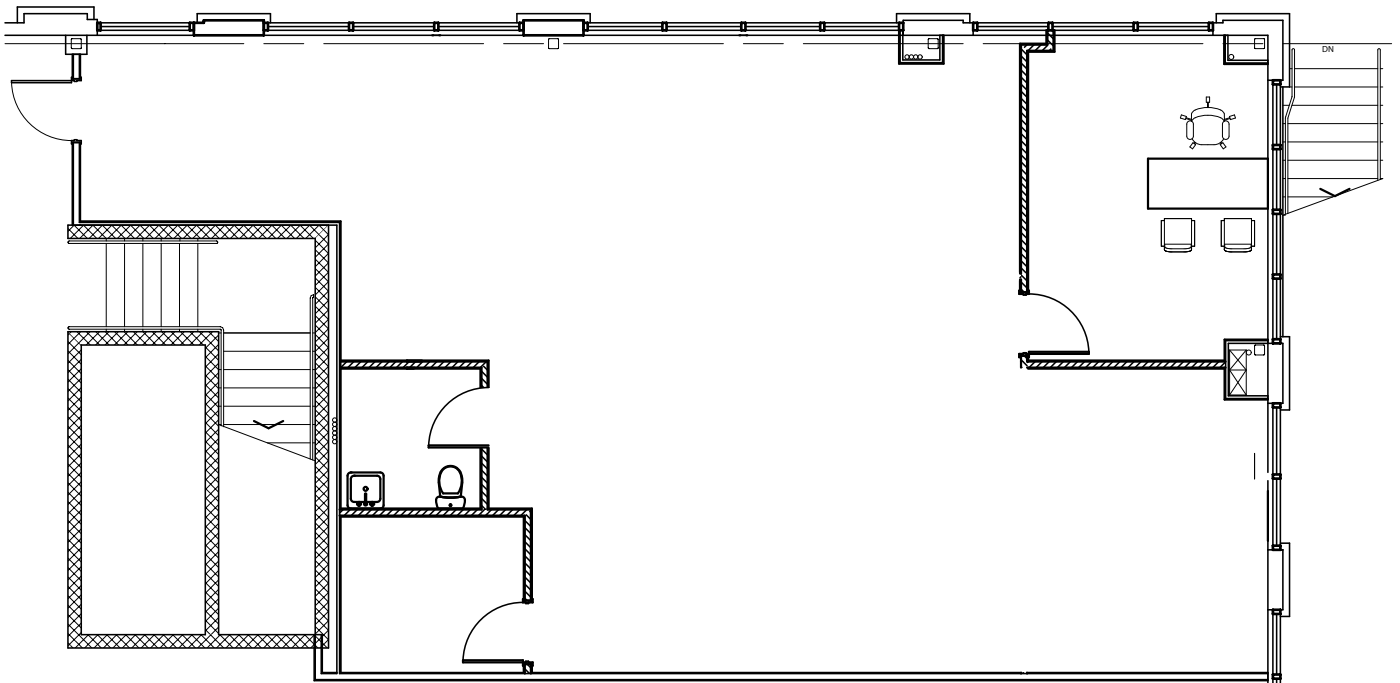


Rick Egitto
CRE Solutions
303 908 0706
rick@ColoradoCRE.com



The Point at Founders Pkwy

Suite 135 floor plan



2,039 sf

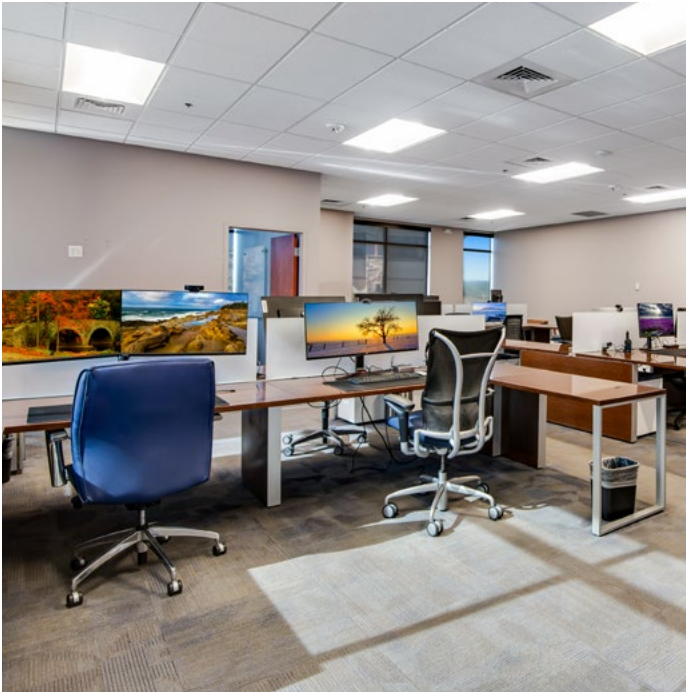


Rick Egitto
CRE Solutions
303 908 0706
rick@ColoradoCRE.com

CRE INVESTMENT
SOLUTIONS BROKERAGE
ADVISORY

The Point at Founders Pkwy

Suite 135 photos

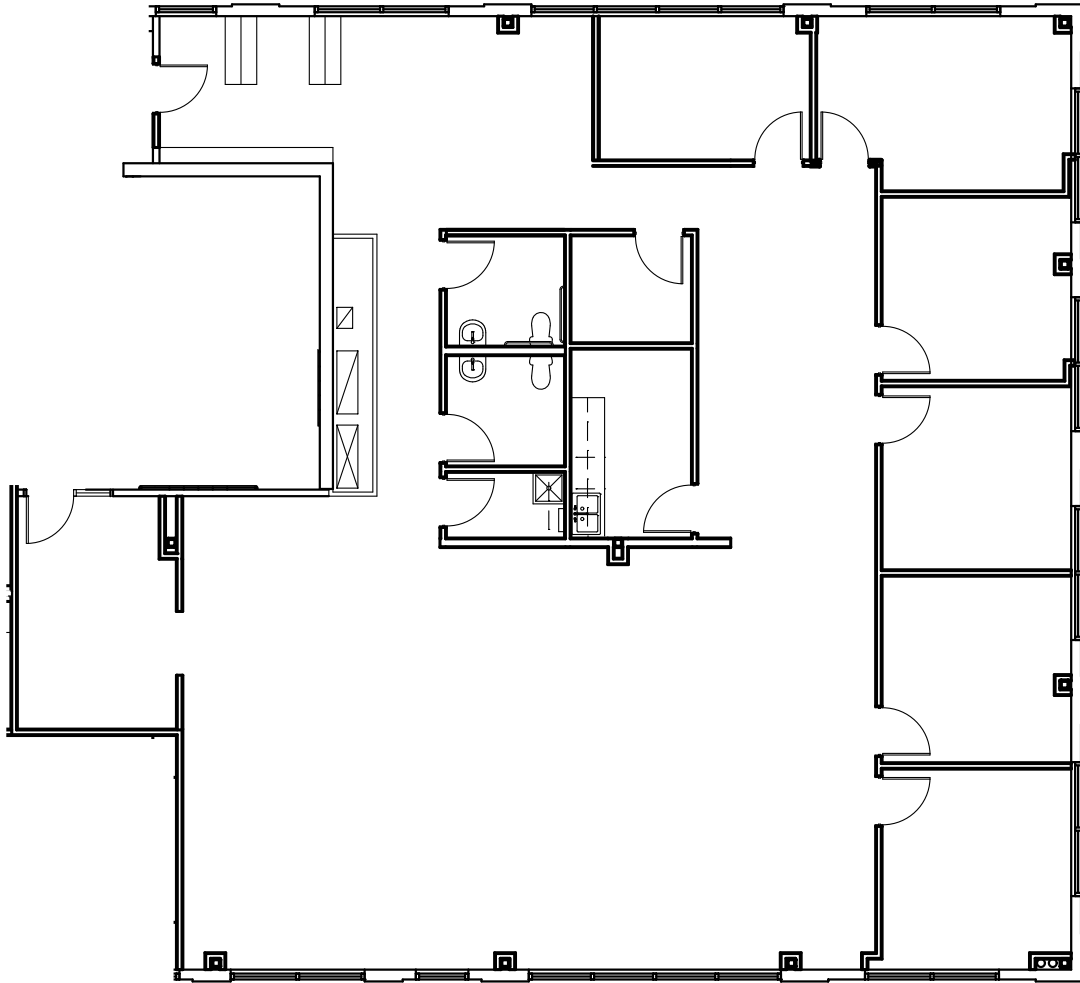


Rick Egitto
CRE Solutions
303 908 0706
rick@ColoradoCRE.com



The Point at Founders Pkwy

Suite 200 floor plan
(will subdivide as needed)



3,954 sf



Rick Egitto
CRE Solutions
303 908 0706
rick@ColoradoCRE.com



The Point at Founders Pkwy

Suite 200 photos



Rick Egitto
CRE Solutions
303 908 0706
rick@ColoradoCRE.com

