

Allen Niesinov
210.978.4050
allen@dhrp.us

LONESOME DOVE - MULTIFAMILY & RETAIL LAND FOR SALE

20407 Gus McCrae Lane | San Antonio, TX 78264



DRONE FOOTAGE
<https://youtu.be/aiXBKg5QUWw>

360° PANORAMIC VIEW
<https://kuula.co/post/Lptn9>

FOR SALE



DRONE FOOTAGE

<https://youtu.be/aiXBKg5QUWw>

360° PANORAMIC VIEW

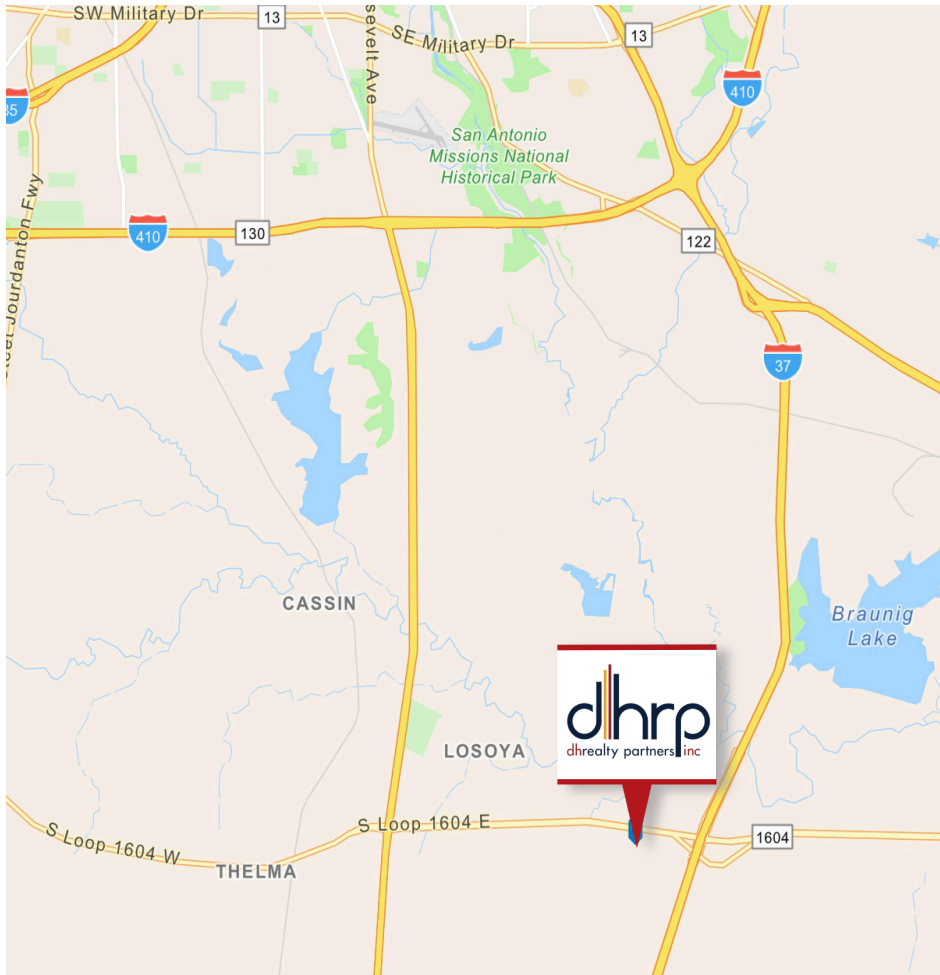
<https://kuula.co/post/L7y5X>

SALE

Allen Niesinov
210.978.4050
allen@dhrp.us

LONESOME DOVE - MULTIFAMILY & RETAIL LAND FOR SALE

20407 Gus McCrae Lane | San Antonio, TX 78264



HIGHLIGHTS

- Platted site with utilities on-site, allowing faster development timeline
- Level topography ideal for efficient site planning and construction
- Signage rights on Loop 1604 frontage providing strong visibility
- ±27.23 AC zoned MF-18 / C-2 / C-3NA for multifamily, retail, or mixed-use development
- Located near I-37 & Loop 1604 with major residential growth including a nearby 2,000-lot VersaTerra development

DESCRIPTION

±27.23 AC development opportunity in a rapidly growing corridor. The property is entitled and development-ready with utilities already on site, significantly reducing time to market for prospective developers. The site is surrounded by established residential neighborhoods and multiple large-scale developments currently underway, creating strong momentum and long-term value in the immediate area.

Strategically positioned near two major highway intersections, the property offers excellent regional accessibility and visibility, making it well suited for residential or mixed-use development. Located within a market that continues to offer relative affordability compared to surrounding metros, the site benefits from strong population growth and increasing housing demand.

LAND SIZE

- For MF-18: 12.327 AC
- For C-2 (Gus McCrae): 2.73 AC
- For C-2 (Near Tractor Supply): 1.82 AC
- For C-3NA: 10.40 AC

SALE PRICE

- \$2,288,424.60 (MF-18 and adjacent C-2)
- \$10 PSF (C-3NA & C-2 (Near Tractor Supply))

ZONING

MF-18 / C-2 / C-3NA

FLOOD PLAIN

No

The information herein was obtained from sources deemed reliable; however, DH Realty Partners, Inc. makes no guarantees, warranties, or representations as to the completeness of accuracy thereof. The presentation of this property is submitted subject to errors, omissions, changes of price, prior to sale or lease, or withdrawal without notice. All Floor plans, property lines, areas, and dimensions are approximate and for illustration purposes only. DHRP | DH Realty Partners, Inc.



DRONE FOOTAGE

<https://youtu.be/aiXBKg5QUWw>

360° PANORAMIC VIEW

<https://kuula.co/post/L7y5X>

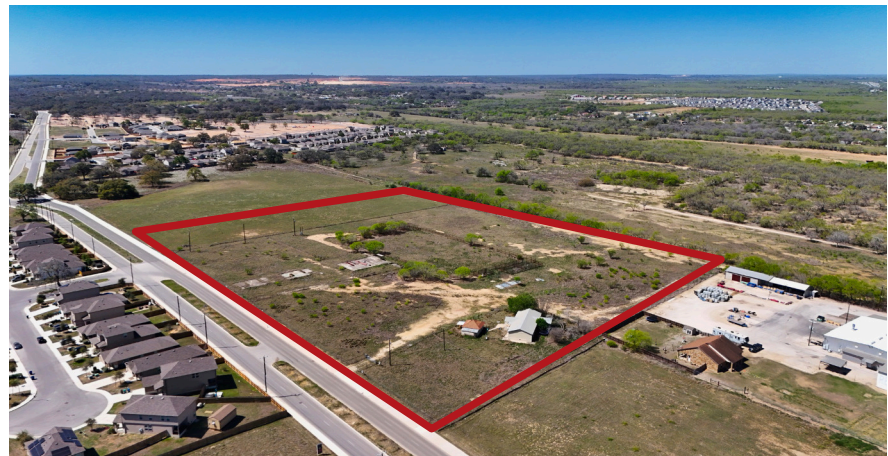
SALE

Allen Niesinov
210.978.4050
allen@dhrp.us

LONESOME DOVE - MULTIFAMILY & RETAIL LAND FOR SALE

20407 Gus McCrae Lane | San Antonio, TX 78264

AERIAL PHOTOS



The information herein was obtained from sources deemed reliable; however, DH Realty Partners, Inc. makes no guarantees, warranties, or representations as to the completeness of accuracy thereof. The presentation of this property is submitted subject to errors, omissions, changes of price, prior to sale or lease, or withdrawal without notice. All Floor plans, property lines, areas, and dimensions are approximate and for illustration purposes only. DHRP | DH Realty Partners, Inc.



DRONE FOOTAGE

<https://youtu.be/aiXBKg5QUWw>

360° PANORAMIC VIEW

<https://kuula.co/post/L7y5X>

SALE

Allen Niesinov
210.978.4050
allen@dhrp.us

LONESOME DOVE - MULTIFAMILY & RETAIL LAND FOR SALE

20407 Gus McCrae Lane | San Antonio, TX 78264

AERIAL PHOTOS



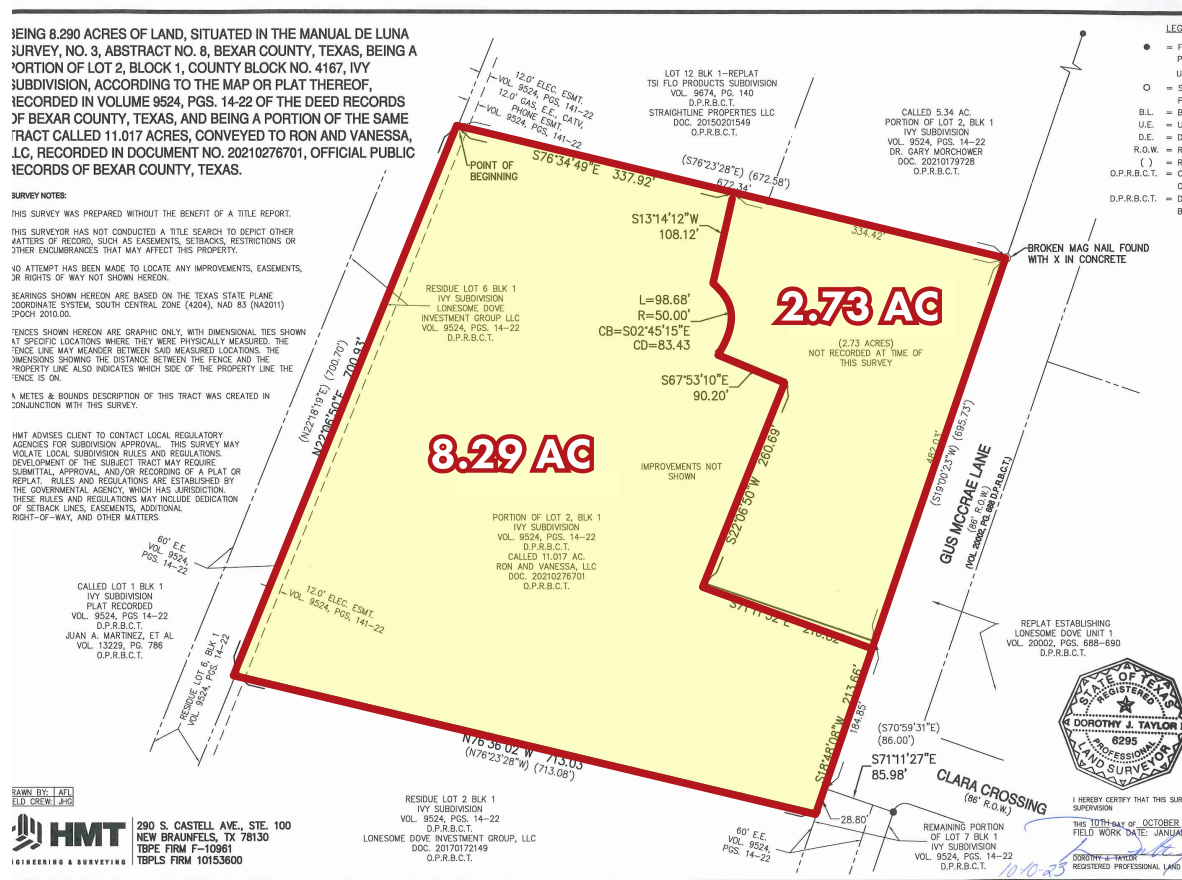
The information herein was obtained from sources deemed reliable; however, DH Realty Partners, Inc. makes no guarantees, warranties, or representations as to the completeness of accuracy thereof. The presentation of this property is submitted subject to errors, omissions, changes of price, prior to sale or lease, or withdrawal without notice. All Floor plans, property lines, areas, and dimensions are approximate and for illustration purposes only. DHRP | DH Realty Partners, Inc.



LONESOME DOVE - MULTIFAMILY & RETAIL LAND FOR SALE

20407 Gus McCrae Lane | San Antonio, TX 78264

SURVEYS



The information herein was obtained from sources deemed reliable; however, DH Realty Partners, Inc. makes no guarantees, warranties, or representations as to the completeness of accuracy thereof. The presentation of this property is submitted subject to errors, omissions, changes of price, prior to sale or lease, or withdrawal without notice. All Floor plans, property lines, areas, and dimensions are approximate and for illustration purposes only. DHRP | DH Realty Partners, Inc.



DRONE FOOTAGE

<https://youtu.be/aiXBKg5QUWw>

360° PANORAMIC VIEW

<https://kuula.co/post/L7y5X>

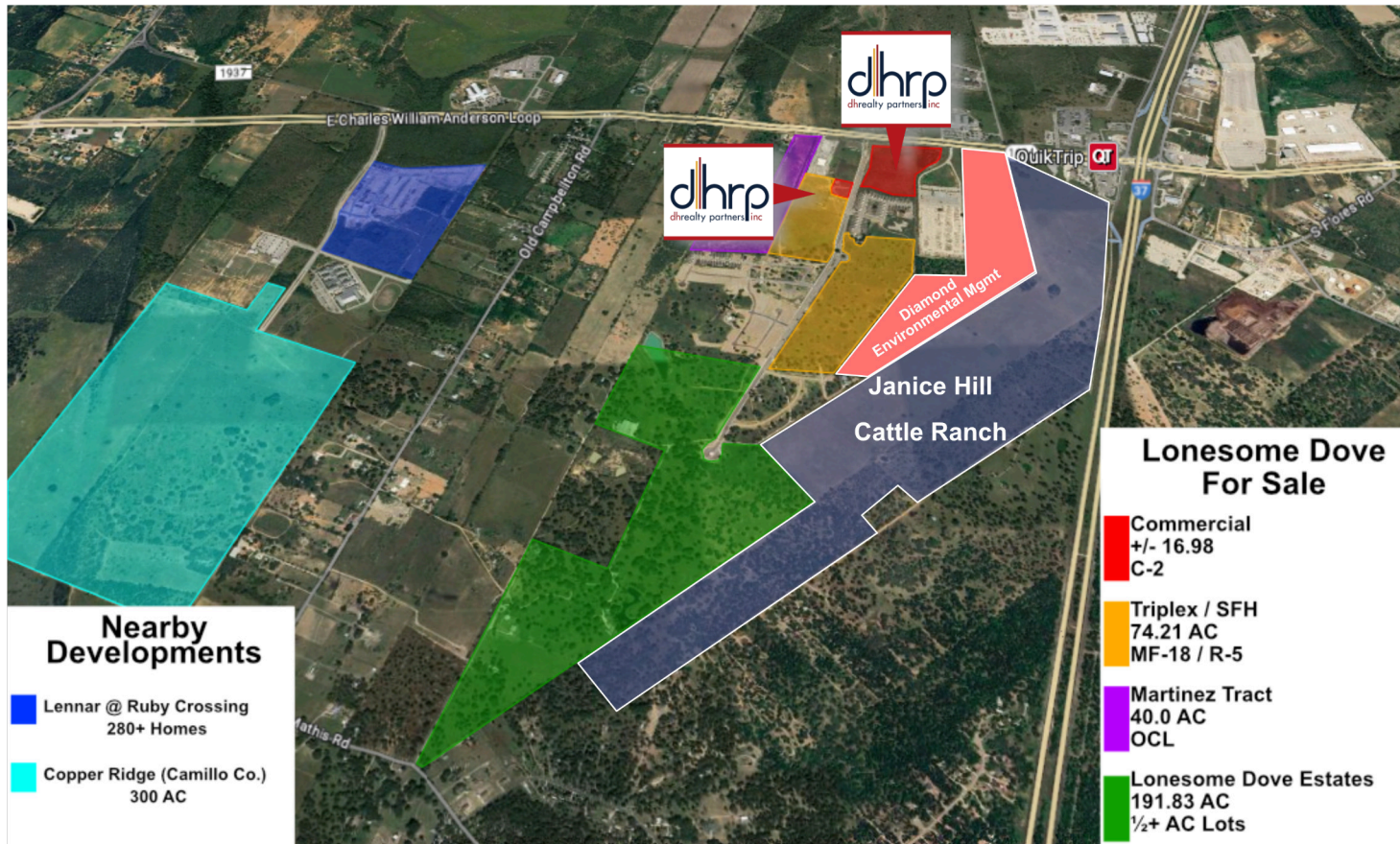
SALE

Allen Niesinov
210.978.4050
allen@dhrp.us

LONESOME DOVE - MULTIFAMILY & RETAIL LAND FOR SALE

20407 Gus McCrae Lane | San Antonio, TX 78264

NEARBY DEVELOPMENTS



The information herein was obtained from sources deemed reliable; however, DH Realty Partners, Inc. makes no guarantees, warranties, or representations as to the completeness of accuracy thereof. The presentation of this property is submitted subject to errors, omissions, changes of price, prior to sale or lease, or withdrawal without notice. All Floor plans, property lines, areas, and dimensions are approximate and for illustration purposes only. DHRP | DH Realty Partners, Inc.



DRONE FOOTAGE

<https://youtu.be/aiXBKg5QUWw>

360° PANORAMIC VIEW

<https://kuula.co/post/L7y5X>

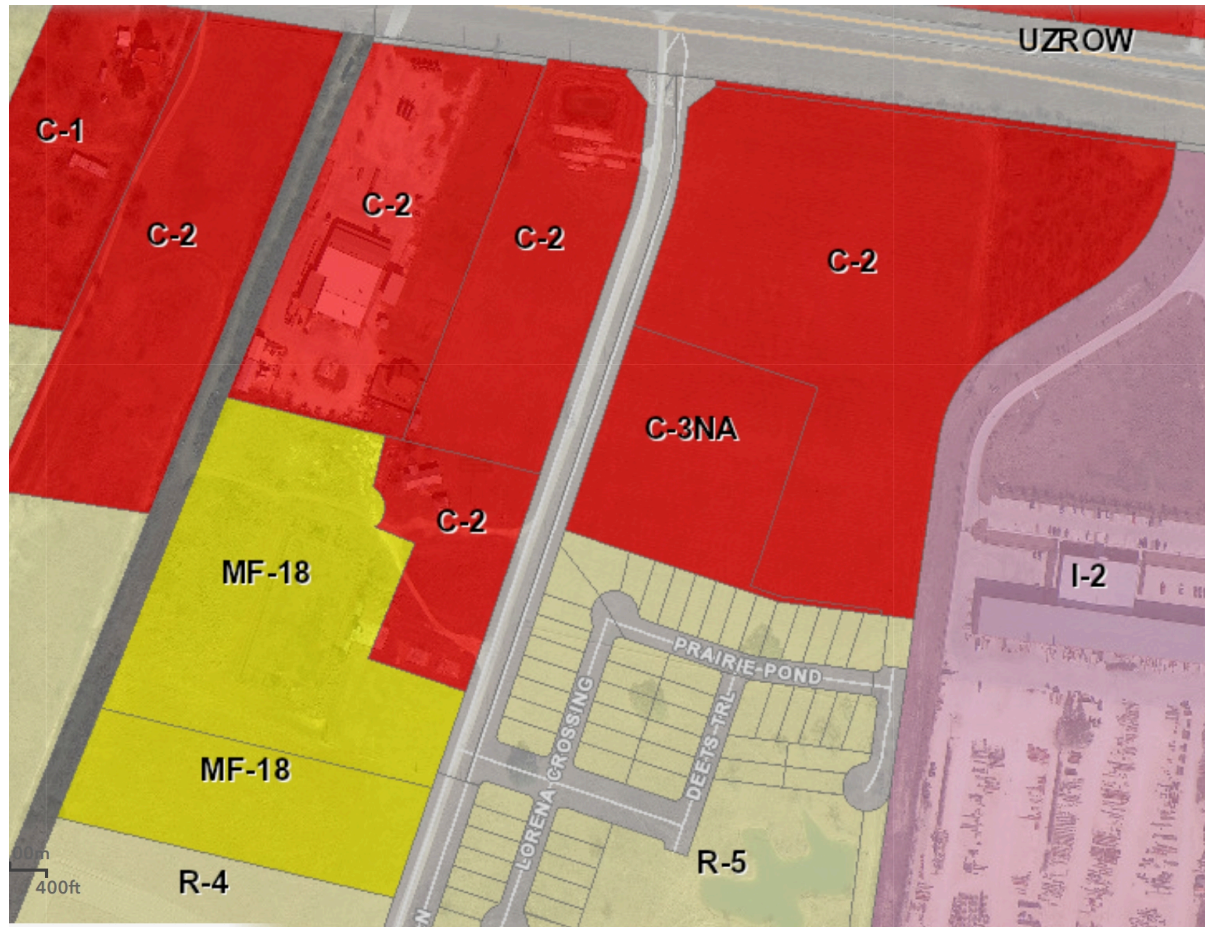
SALE

Allen Niesinov
210.978.4050
allen@dhrp.us

LONESOME DOVE - MULTIFAMILY & RETAIL LAND FOR SALE

20407 Gus McCrae Lane | San Antonio, TX 78264

ZONING MAP



The information herein was obtained from sources deemed reliable; however, DH Realty Partners, Inc. makes no guarantees, warranties, or representations as to the completeness of accuracy thereof. The presentation of this property is submitted subject to errors, omissions, changes of price, prior to sale or lease, or withdrawal without notice. All Floor plans, property lines, areas, and dimensions are approximate and for illustration purposes only. DHRP | DH Realty Partners, Inc.



DRONE FOOTAGE

<https://youtu.be/aiXBKg5QUWw>

360° PANORAMIC VIEW

<https://kuula.co/post/L7y5X>

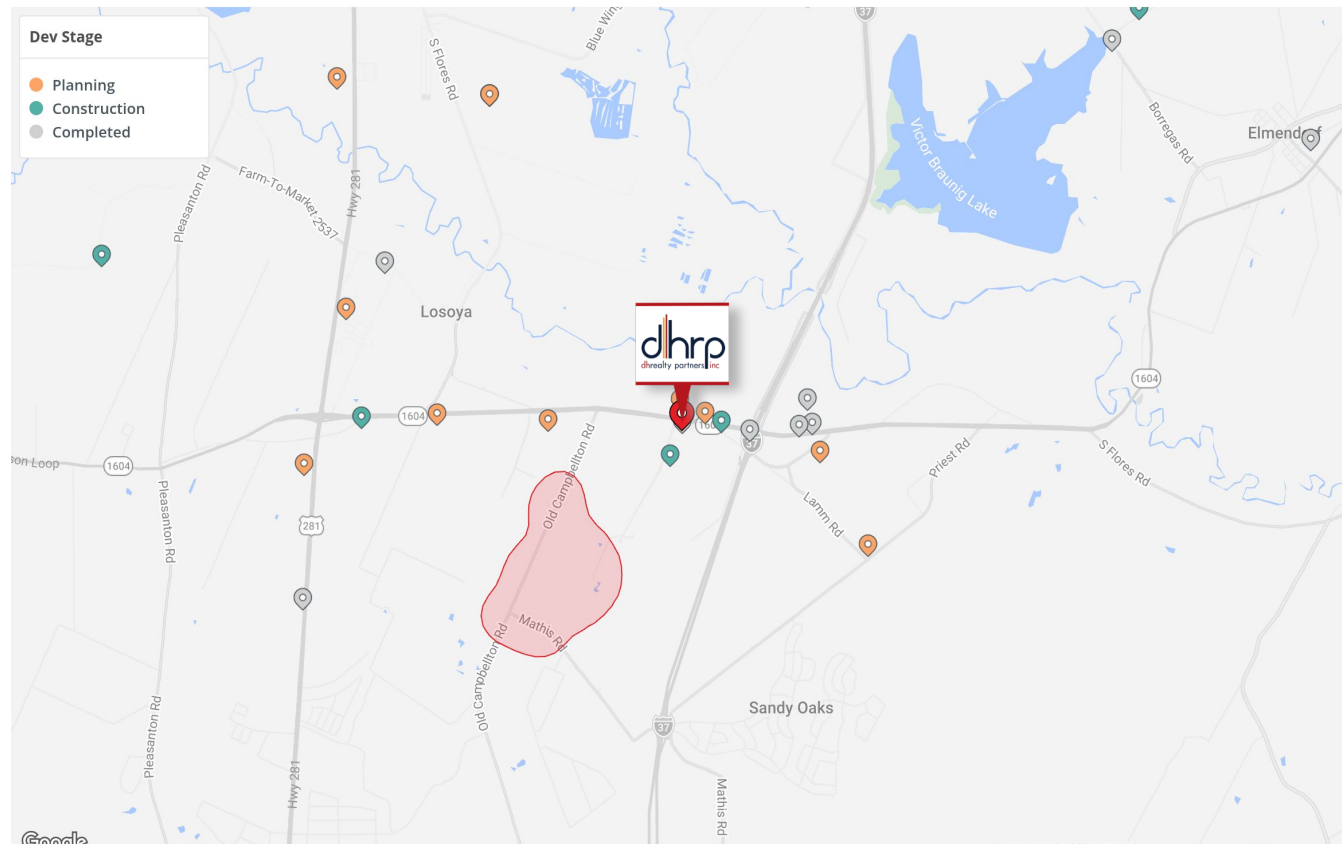
SALE

Allen Niesinov
210.978.4050
allen@dhrp.us

LONESOME DOVE - MULTIFAMILY & RETAIL LAND FOR SALE

20407 Gus McCrae Lane | San Antonio, TX 78264

NEW & PLANNED RESIDENTIAL DEVELOPMENTS



The information herein was obtained from sources deemed reliable; however, **DH Realty Partners, Inc.** makes no guarantees, warranties, or representations as to the completeness of accuracy thereof. The presentation of this property is submitted subject to errors, omissions, changes of price, prior to sale or lease, or withdrawal without notice. All Floor plans, property lines, areas, and dimensions are approximate and for illustration purposes only. DHRP | DH Realty Partners, Inc.



DRONE FOOTAGE

<https://youtu.be/aiXBKg5QUWw>

360° PANORAMIC VIEW

<https://kuula.co/post/L7y5X>

SALE

Allen Niesinov
210.978.4050
allen@dhrp.us

LONESOME DOVE - MULTIFAMILY & RETAIL LAND FOR SALE

20407 Gus McCrae Lane | San Antonio, TX 78264

TOP NEARBY DESTINATIONS & TRUE TRADE AREA



The information herein was obtained from sources deemed reliable; however, DH Realty Partners, Inc. makes no guarantees, warranties, or representations as to the completeness of accuracy thereof. The presentation of this property is submitted subject to errors, omissions, changes of price, prior to sale or lease, or withdrawal without notice. All Floor plans, property lines, areas, and dimensions are approximate and for illustration purposes only. DHRP | DH Realty Partners, Inc.



DRONE FOOTAGE

<https://youtu.be/aiXBKg5QUWw>

360° PANORAMIC VIEW

<https://kuula.co/post/L7y5X>

SALE

Allen Niesinov
210.978.4050
allen@dhrp.us

LONESOME DOVE - MULTIFAMILY & RETAIL LAND FOR SALE

20407 Gus McCrae Lane | San Antonio, TX 78264

DEMOGRAPHICS



	1 Mile	3 Mile	5 Mile
Overview			
Population	--	9,788	23,023
Households	--	2,954	6,963
Persons per Household	--	3.3	3.3
Household Median Income	--	\$56,946.51	\$55,359.71
Household Median Disposable Income	--	\$50,569.51	\$49,349.13
Household Median Discretionary Income	--	\$37,288.7	\$36,134.93
Average Income Per Person	--	\$20,326.75	\$20,534.34
Median Rent	--	\$1,330.17	\$1,283.48
Median House Value	--	\$133,379.42	\$145,677.02

Calculated using Weighted Centroid from Block Groups | DataSet: STI: Popstats

The information herein was obtained from sources deemed reliable; however, DH Realty Partners, Inc. makes no guarantees, warranties, or representations as to the completeness of accuracy thereof. The presentation of this property is submitted subject to errors, omissions, changes of price, prior to sale or lease, or withdrawal without notice. All Floor plans, property lines, areas, and dimensions are approximate and for illustration purposes only. DHRP | DH Realty Partners, Inc.

HAZARDOUS MATERIAL DISCLOSURE

Every purchaser, seller, landlord and/or tenant of any interest in real property ("Property") is notified that prior or current uses of the Property or adjacent properties may have resulted in hazardous or undesirable materials being located on the Property. These materials may not be visible or easily detected. Current or future laws may require removal or clean-up of areas containing these materials. In order to determine if hazardous or undesirable materials are present on the Property, expert inspections are necessary and removal or clean-up of these materials will require the services of experts. Real Estate Agents are not qualified experts.

If you are a seller or landlord, it is your responsibility to ensure that the transaction documents include disclosures and/or disclaimers that are appropriate for the transaction and the Property.

If you are a purchaser or tenant, it is your responsibility to ensure that the transaction documents include provisions to permit consultation with attorneys, environmental consultants and others to make prudent investigations, and further that such inspections are conducted.

ADA DISCLOSURE

In order to ensure that all business establishments are accessible to persons with a variety of disabilities, the Americans with Disabilities Act was enacted under federal law and there are also state and local laws that may require alterations to a Property in order to allow access. Texas has enacted the Architectural Barriers Removal Act to also accommodate persons with disabilities. Real Estate Agents are not qualified to advise you if the Property complies with these laws or what changes may be necessary. You should consult with attorneys, engineers and other experts to determine if the Property is in compliance with these laws.

FLOOD PLAIN INFORMATION DISCLOSURE

It is the sole responsibility of every purchaser, seller, landlord and/or tenant of any interest in Property to independently review the appropriate flood plain designation maps proposed and adopted by federal, state, and local resources including, but not limited to, the Federal Emergency Management Association ("FEMA") and the San Antonio River Authority ("SARA"), in order to determine the potential flood risk of their Property. Real Estate Agents are not qualified to assess and cannot warrant, guarantee, or make any representations about the flood risk of a particular piece of Property. All decisions made or actions taken or not taken by a purchaser, seller, landlord and/or tenant with respect to the flood risk of a particular piece of Property shall be the sole responsibility of such party.



Information About Brokerage Services

Texas law requires all real estate license holders to give the following information about brokerage services to prospective buyers, tenants, sellers and landlords.

TYPES OF REAL ESTATE LICENSE HOLDERS:

- A **BROKER** is responsible for all brokerage activities, including acts performed by sales agents sponsored by the broker.
- A **SALES AGENT** must be sponsored by a broker and works with clients on behalf of the broker.

A BROKER'S MINIMUM DUTIES REQUIRED BY LAW (A client is the person or party that the broker represents):

- Put the interests of the client above all others, including the broker's own interests;
- Inform the client of any material information about the property or transaction received by the broker;
- Answer the client's questions and present any offer to or counter-offer from the client; and
- Treat all parties to a real estate transaction honestly and fairly.

WRITTEN AGREEMENTS ARE REQUIRED IN CERTAIN SITUATIONS: A license holder who performs brokerage activity for a prospective buyer of residential property must enter into a written agreement with the buyer before showing any residential property to the buyer or if no residential property will be shown, before presenting an offer on behalf of the buyer. This written agreement must contain specific information required by Texas law. For more information on these requirements, see section 1101.563 of the Texas Occupations Code. **Even if a written agreement is not required, to avoid disputes, all agreements between you and a broker should be in writing and clearly establish: (i) the broker's duties and responsibilities to you and your obligations under the agreement; and (ii) the amount or rate of compensation the broker will receive and how this amount is determined.**

A LICENSE HOLDER CAN REPRESENT A PARTY IN A REAL ESTATE TRANSACTION:

AS AGENT FOR OWNER (SELLER/LANDLORD): The broker becomes the property owner's agent through an agreement with the owner, usually in a written listing to sell or property management agreement. An owner's agent must perform the broker's minimum duties above and must inform the owner of any material information about the property or transaction known by the agent, including information disclosed to the agent by the buyer or buyer's agent. **An owner's agent fees are not set by law and are fully negotiable.**

AS AGENT FOR BUYER/TENANT: The broker becomes the buyer/tenant's agent by agreeing to represent the buyer, usually through a written representation agreement. A buyer's agent must perform the broker's minimum duties above and must inform the buyer of any material information about the property or transaction known by the agent, including information disclosed to the agent by the seller or seller's agent. **A buyer/tenant's agent fees are not set by law and are fully negotiable.**

AS AGENT FOR BOTH - INTERMEDIARY: To act as an intermediary between the parties the broker must first obtain the written agreement of *each party* to the transaction. The written agreement must state who will pay the broker and, in conspicuous bold or underlined print, set forth the broker's obligations as an intermediary. A broker who acts as an intermediary:

- Must treat all parties to the transaction impartially and fairly;
- May, with the parties' written consent, appoint a different license holder associated with the broker to each party (owner and buyer) to communicate with, provide opinions and advice to, and carry out the instructions of each party to the transaction.
- Must not, unless specifically authorized in writing to do so by the party, disclose:
 - o that the owner will accept a price less than the written asking price;
 - o that the buyer/tenant will pay a price greater than the price submitted in a written offer; and
 - o any confidential information or any other information that a party specifically instructs the broker in writing not to disclose, unless required to do so by law.

A LICENSE HOLDER CAN SHOW PROPERTY TO A BUYER/TENANT WITHOUT REPRESENTING THE BUYER/TENANT IF:

- The broker has not agreed with the buyer/tenant, either orally or in writing, to represent the buyer/tenant;
- The broker is not otherwise acting as the buyer/tenant's agent at the time of showing the property;
- The broker does not provide the buyer/tenant opinions or advice regarding the property or real estate transactions generally; and
- The broker does not perform any other act of real estate brokerage for the buyer/tenant.

Before showing a residential property to an unrepresented prospective buyer, a license holder must enter into a written agreement that contains the information required by section 1101.563 of the Texas Occupations Code. The agreement may not be exclusive and must be limited to no more than 14 days.

LICENSE HOLDER CONTACT INFORMATION: This notice is being provided for information purposes. It does not create an obligation for you to use the broker's services. Please acknowledge receipt of this notice below and retain a copy for your records.

DH Realty Partners, Inc.	147342	www.dhrp.us	(210)222-2424
Name of Sponsoring Broker (Licensed Individual or Business Entity)	License No.	Email	Phone
Daniel Briggs	311372	danielbriggs@dhrp.us	(210)222-2424
Name of Designated Broker of Licensed Business Entity, if applicable	License No.	Email	Phone
Howard Frank Stanley	483569	stanley@dhrp.us	(210)222-2424
Name of Licensed Supervisor of Sales Agent/Associate, if applicable	License No.	Email	Phone
Allen Niesinov	768330	allen@dhrp.us	(210)222-2424
Name of Sales Agent/Associate	License No.	Email	Phone

Buyer/Tenant/Seller/Landlord Initials _____ Date _____

Regulated by the Texas Real Estate Commission

Information available at www.trec.texas.gov