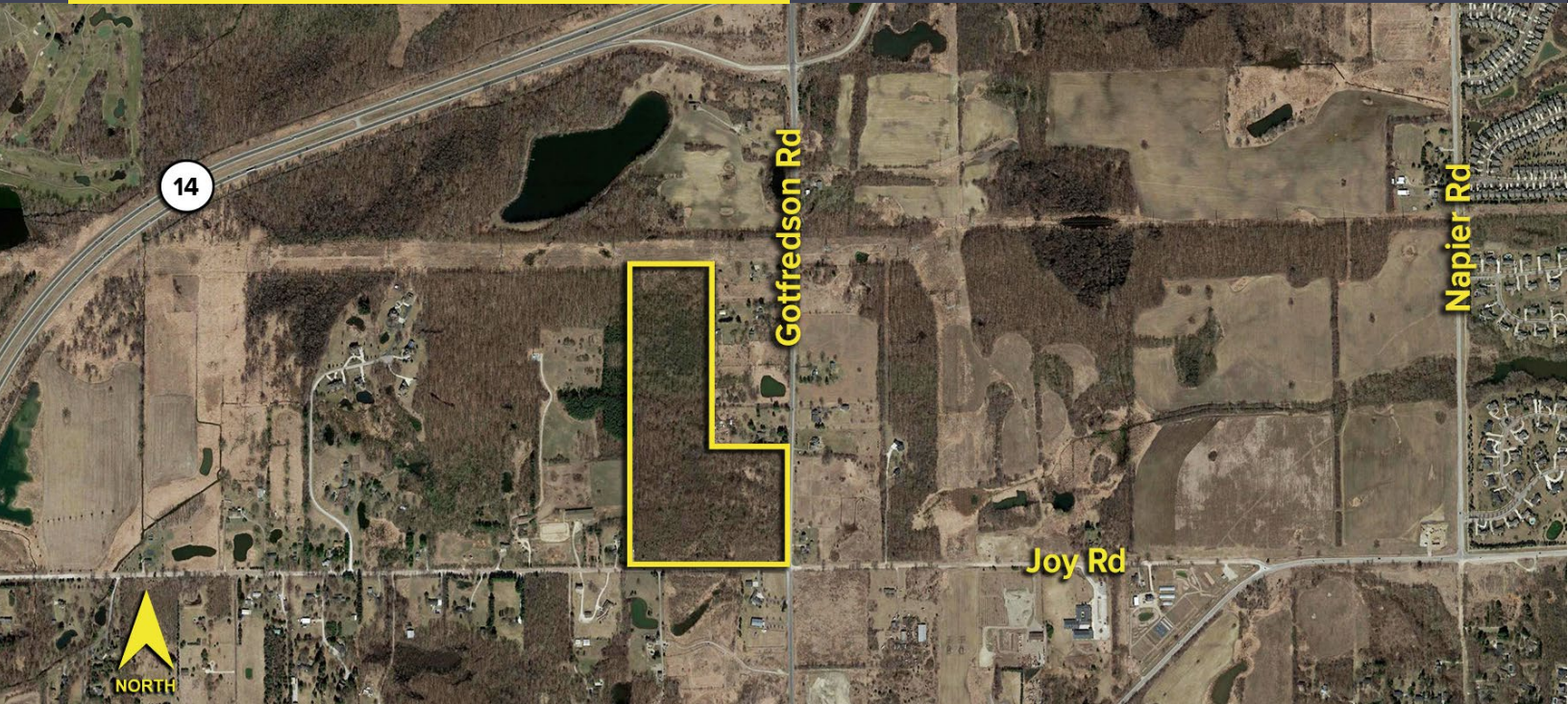


# JOY ROAD SALEM TWP., MICHIGAN

LAND FOR SALE  
46.99 Acres Available

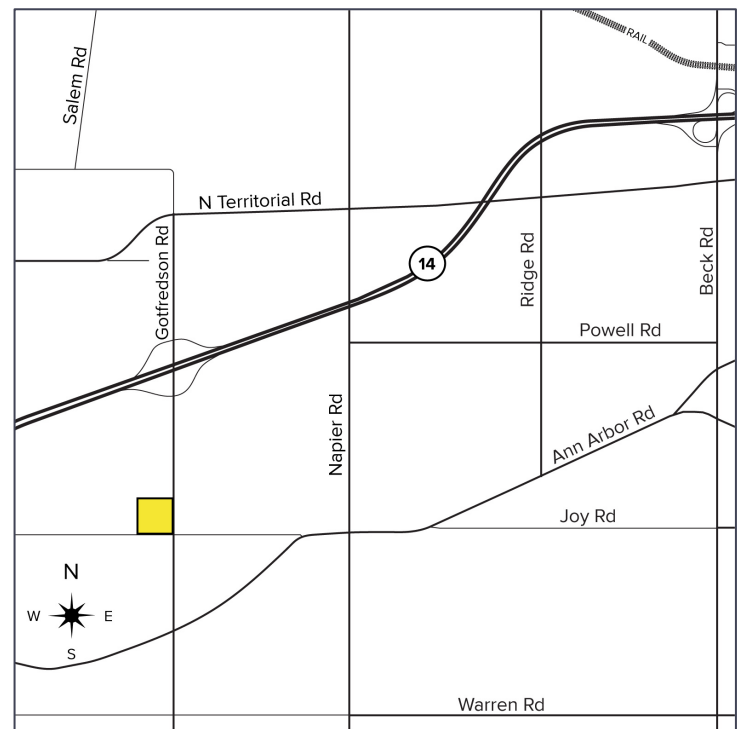


**SIGNATURE  
ASSOCIATES**  
KNOW SIGNATURE | KNOW RESULTS



## PROPERTY FEATURES

- 46.99 acres available
- Zoned AG
- Potential for up to 69 acres at the northwest corner of Gotfredson Rd and Joy Rd.
- Immediately south of M-14
- State of Michigan has earmarked \$20 million for water and sewer
- Gas utilities on site
- Asking Price: \$3,994,150.00 (\$85,000/acre)



For more information, please contact:

**JEFF LEMANSKI**  
(248) 359 0641  
jlemsanki@signatureassociates.com

**STEVE GORDON**  
(248) 948 0101  
sgordon@signatureassociates.com

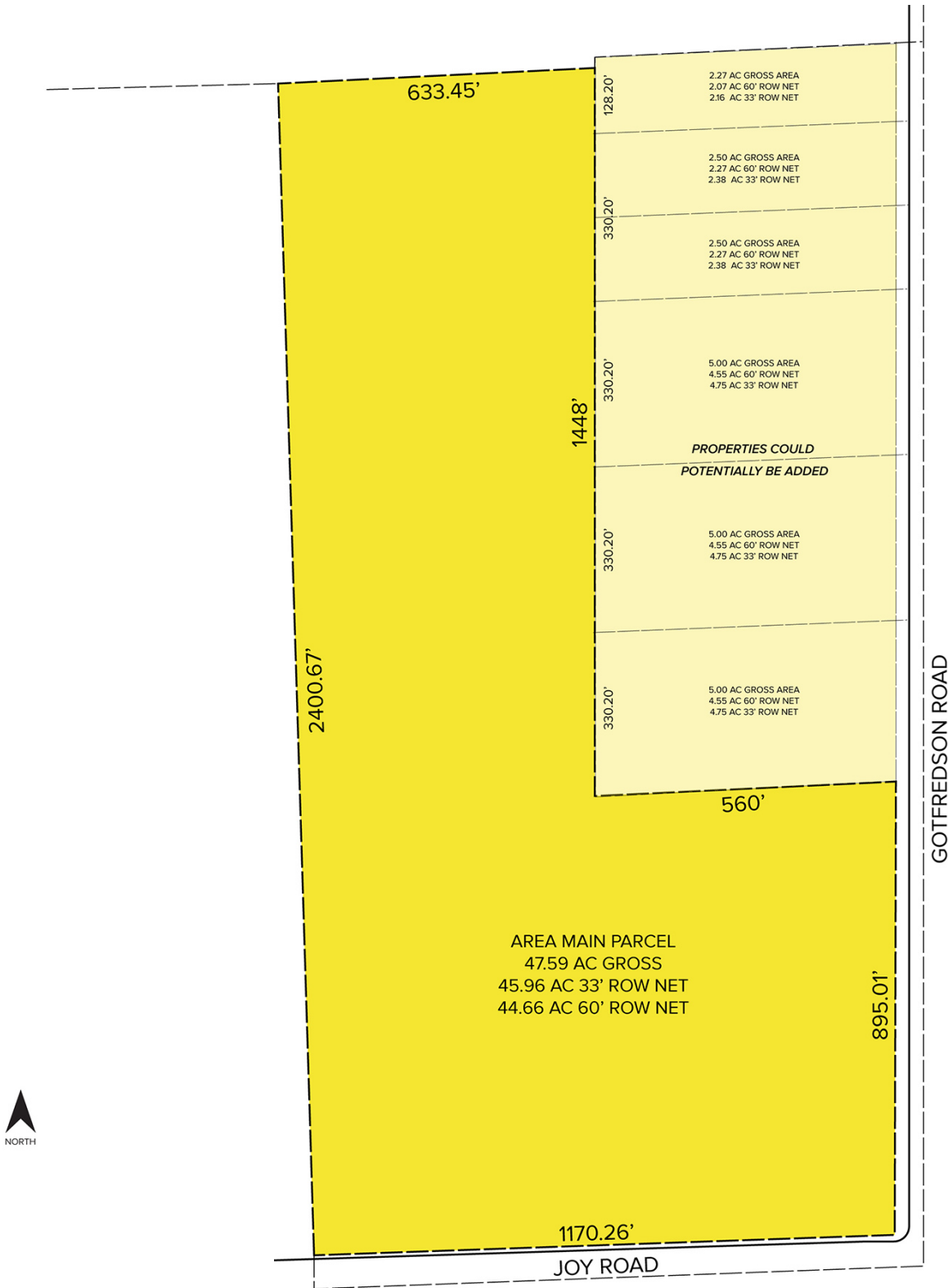
**SIGNATURE ASSOCIATES**  
One Towne Square, Suite 1200  
Southfield, MI 48076  
www.signatureassociates.com

# Joy Road – Salem Twp., Michigan

## Land For Sale

46.99  
Acres  
AVAILABLE

### Site Plan



For more information, please contact:

**JEFF LEMANSKI**  
(248) 359 0641  
jlemsanki@signatureassociates.com

**STEVE GORDON**  
(248) 948 0101  
sgordon@signatureassociates.com

**SIGNATURE ASSOCIATES**  
One Towne Square, Suite 1200  
Southfield, MI 48076  
www.signatureassociates.com

Information is subject to verification and no liability for errors or omissions is assumed. Price is subject to change and listing withdrawal.