



**KOHL'S CORPORATE
HEADQUARTERS
+/- 5,000 EMPLOYEES**

FORMER DAYCARE

MENOMONEE FALLS, WI

FOR SALE OR LEASE
11,237 SF | 3.26 ACRES



MID-AMERICA®
Real Estate-Wisconsin, LLC

FORMER DAYCARE MENOMONEE FALLS, WI

Address

N56 W16949 Ridgewood Drive
Menomonee Falls, WI 53051

For Sale or Lease

11,237 SF | 3.26 Acres
Parcel# 0107 994 001
Contact Broker for pricing

Zoning

I-L Light Industrial

Parking

45 onsite parking stalls

Area Retailers

DUNKIN'



Walgreens

Neighboring Companies





KOHL'S Corporate Headquarters
+/- 5,000 employees



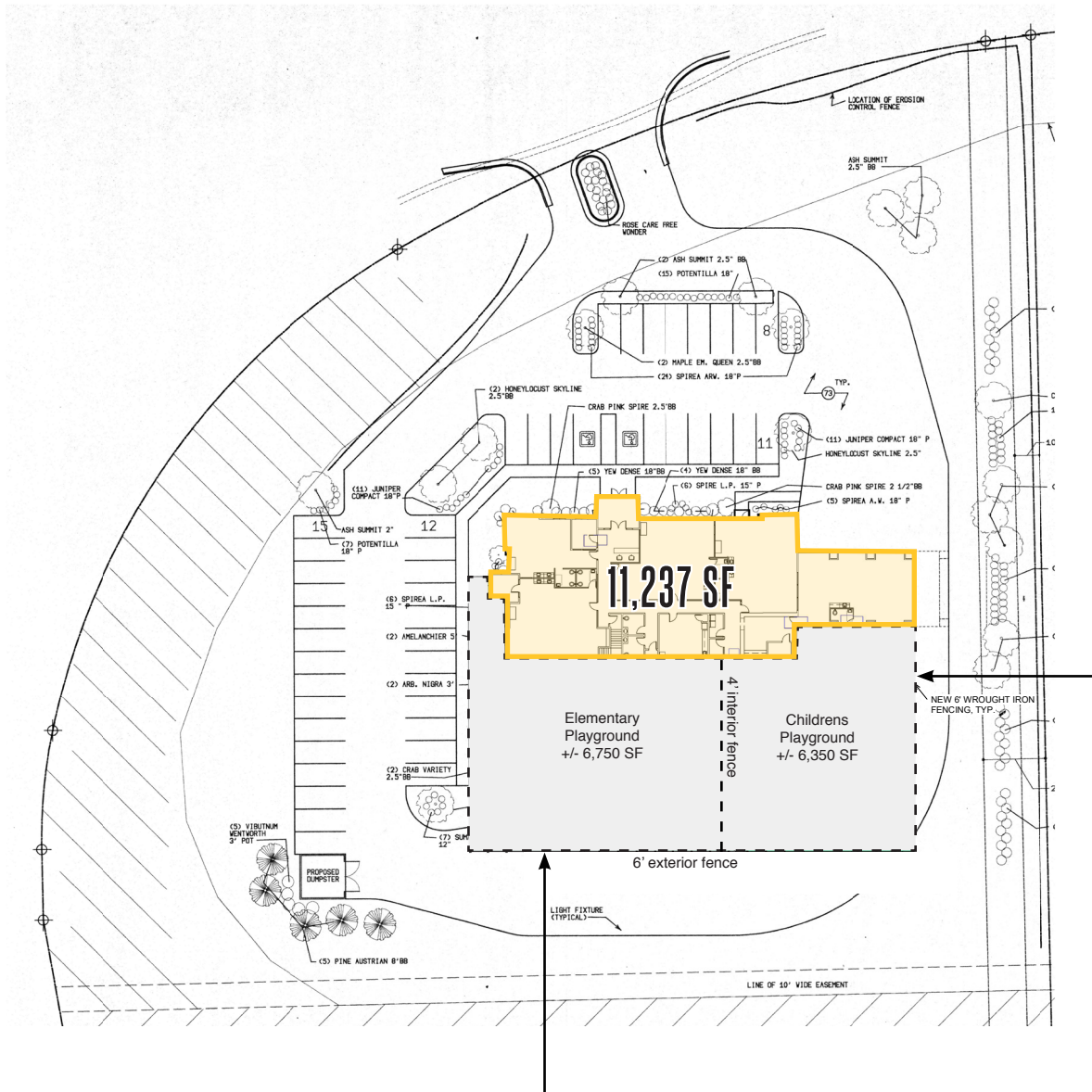
Features

- Former Guidepost Montessori School
- Completely renovated/expanded (2023)
- Located adjacent to Silver Spring Corporate Park, which houses Kohl's Corporate Headquarters with nearly 5,000 employees
- Multiple Monument Signs
- Ideal for Education, Medical, Office or Retail uses
- Menomonee Falls was voted:
 - 15th best place to live in America (2020) by Money Magazine
 - Safest City in Wisconsin with over 25,000 residents (2022) AreaVibes.com
 - A top 50 Best Small City in US by WalletHub.com (2022)

Demographics

	1 MILE	3 MILES	5 MILES
 POPULATION	4,473	35,664	113,539
 HOUSEHOLDS	1,625	14,252	45,966
 AVG HOUSEHOLD INCOME	\$198,989	\$155,667	\$130,219
 DAYTIME POPULATION	8,320	39,539	140,186

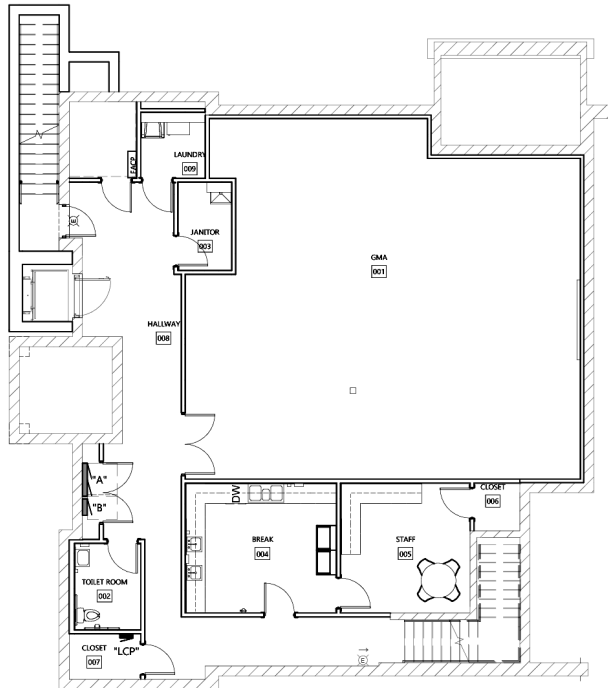
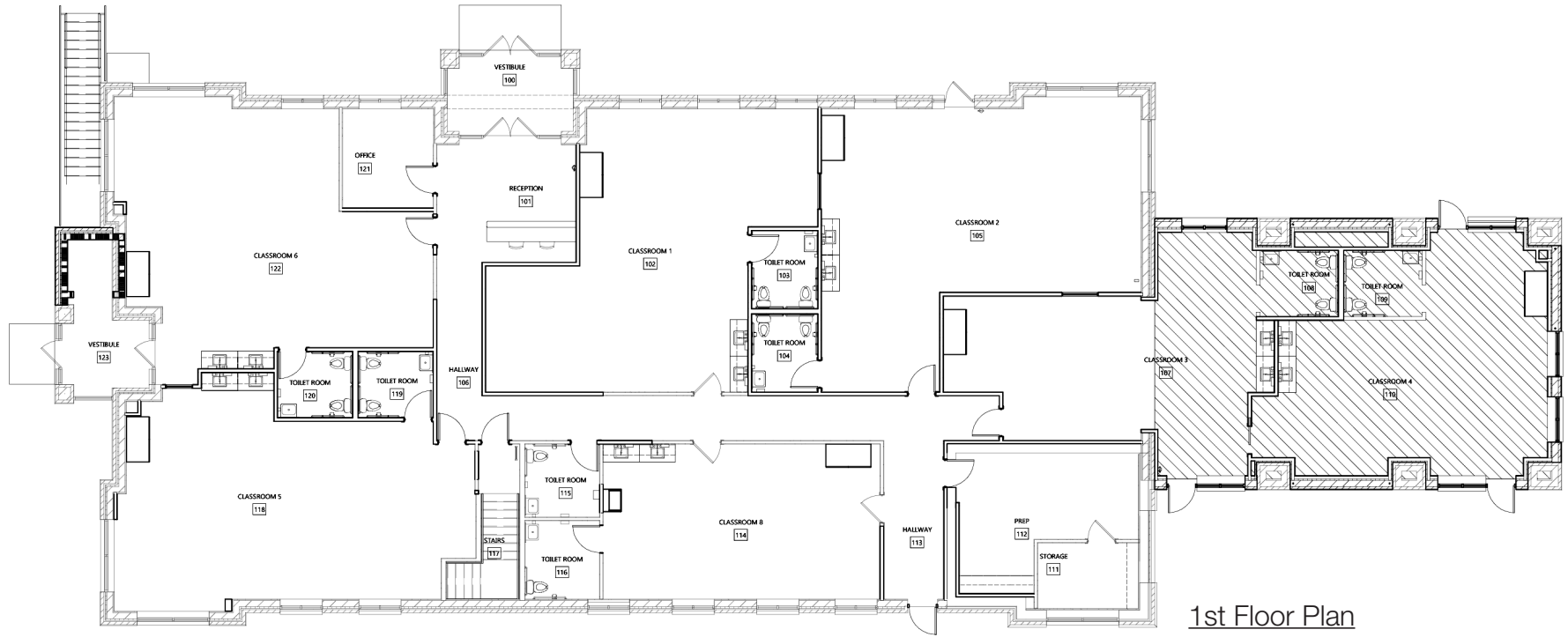
SITE PLAN



FOR SALE OR LEASE
11,237 SF | 3.26 ACRES



FLOOR PLAN



PHOTOS




MENOMONEE FALLS, WI



Within a 5-Mile Radius in 2024 


\$425,408
AVERAGE
HOME VALUE


27,560
POPULATION 3 YEARS+
ENROLLED IN SCHOOL


\$15,157,107
ELEMENTARY/HIGH SCHOOL
TUITION


4,791
2024 TOTAL BUSINESSES



FORMER DAYCARE

MENOMONEE FALLS, WI

SAWYER KOWIESKI

414.935.6011

SKowieski@MidAmericaGrp.com

ADAM DREIER

414.390.1406

ADreier@MidAmericaGrp.com

TONY COLVIN

414.390.1405

TColvin@MidAmericaGrp.com



MidAmericaGrp.com



600 N Plankinton Ave #301

Milwaukee, WI 53203

414.273.4600

BROKER DISCLOSURE TO NON-RESIDENTIAL CUSTOMERS

Prior to negotiating on your behalf the brokerage firm, or an agent associated with the firm, must provide you the following disclosure:

DISCLOSURE TO CUSTOMERS

You are a customer of the brokerage firm (hereinafter Firm). The Firm is either an agent of another party in the transaction or a subagent of another firm that is the agent of another party in the transaction. A broker or a salesperson acting on behalf of the Firm may provide brokerage services to you. Whenever the Firm is providing brokerage services to you, the Firm and its brokers and salespersons (hereinafter Agents) owe you, the customer, the following duties:

- The duty to provide brokerage services to you fairly and honestly.
- The duty to exercise reasonable skill and care in providing brokerage services to you.
- The duty to provide you with accurate information about market conditions within a reasonable time if you request it, unless disclosure of the information is prohibited by law.
- The duty to disclose to you in writing certain Material Adverse Facts about a property, unless disclosure of the information is prohibited by law.
- The duty to protect your confidentiality. Unless the law requires it, the Firm and its Agents will not disclose your confidential information or the confidential information of other parties.
- The duty to safeguard trust funds and other property held by the Firm or its Agents.
- The duty, when negotiating, to present contract proposals in an objective and unbiased manner and disclose the advantages and disadvantages of the proposals.

Please review this information carefully. An Agent of the Firm can answer your questions about brokerage services, but if you need legal advice, tax advice, or a professional home inspection, contact an attorney, tax advisor, or home inspector. This disclosure is required by section 452.135 of the Wisconsin statutes and is for information only. It is a plain-language summary of the duties owed to a customer under section 452.133(1) of the Wisconsin statutes.

CONFIDENTIALITY NOTICE TO CUSTOMERS

The Firm and its Agents will keep confidential any information given to the Firm or its Agents in confidence, or any information obtained by the Firm and its Agents that a reasonable person would want to be kept confidential, unless the information must be disclosed by law or you authorize the Firm to disclose particular information. The Firm and its Agents shall continue to keep the information confidential after the Firm is no longer providing brokerage services to you.

The following information is required to be disclosed by law:

1. Material Adverse Facts, as defined in Wis. Stat. § 452.01(5g) (see "Definition of Material Adverse Facts").
2. Any facts known by the Firm or its Agents that contradict any information included in a written inspection report on the property or real estate that is the subject of the transaction.

To ensure that the Firm and its Agents are aware of what specific information you consider confidential, you may list that information below. At a later time, you may also provide the Firm or its Agents with other information you consider to be confidential.

NON-CONFIDENTIAL INFORMATION (the following information may be disclosed by the Firm and its Agents): _____

(Insert information you authorize to be disclosed, such as financial qualification information.)

CONFIDENTIAL INFORMATION: _____

DEFINITION OF MATERIAL ADVERSE FACTS

A "Material Adverse Fact" is defined in Wis. Stat. § 452.01(5g) as an Adverse Fact that a party indicates is of such significance, or that is generally recognized by a competent licensee as being of such significance to a reasonable party, that it affects or would affect the party's decision to enter into a contract or agreement concerning a transaction or affects or would affect the party's decision about the terms of such a contract or agreement.

An "Adverse Fact" is defined in Wis. Stat. § 452.01(1e) as a condition or occurrence that a competent licensee generally recognizes will significantly and adversely affect the value of the property, significantly reduce the structural integrity of improvements to real estate, or present a significant health risk to occupants of the property; or information that indicates that a party to a transaction is not able to or does not intend to meet his or her obligations under a contract or agreement made concerning the transaction.

NOTICE ABOUT SEX OFFENDER REGISTRY

You may obtain information about the sex offender registry and persons registered with the registry by contacting the Wisconsin Department of Corrections on the Internet at <http://www.doc.wi.gov> or by telephone at 608-240-5830.