



Photo Credit: Costar

# Concord Class A Office Sublease

1001 GALAXY WAY STE 200, CONCORD, CA STE 200

## SIZE

±4,000 – ±8,073 SF

## LED

December 31, 2029



## SPACE HIGHLIGHTS

- Law Firm Build Out
- Plug and Play
- Available Immediately
- Northern View

## BUILDING AMENITIES

- On site Gym, Property Management, and Security
- Walking Distance to the Veranda Retail and Restaurants
- Quick access to HWY 680
- Mix of Surface and Underground Parking
- Courtyard Open Space Between Buildings

For information, please contact:

### Rich Hoyt

Senior Managing Director  
t 619-548-7866  
Rich.Hoyt@nmrk.com  
CA RE #01470213

### Kevin Delehanty

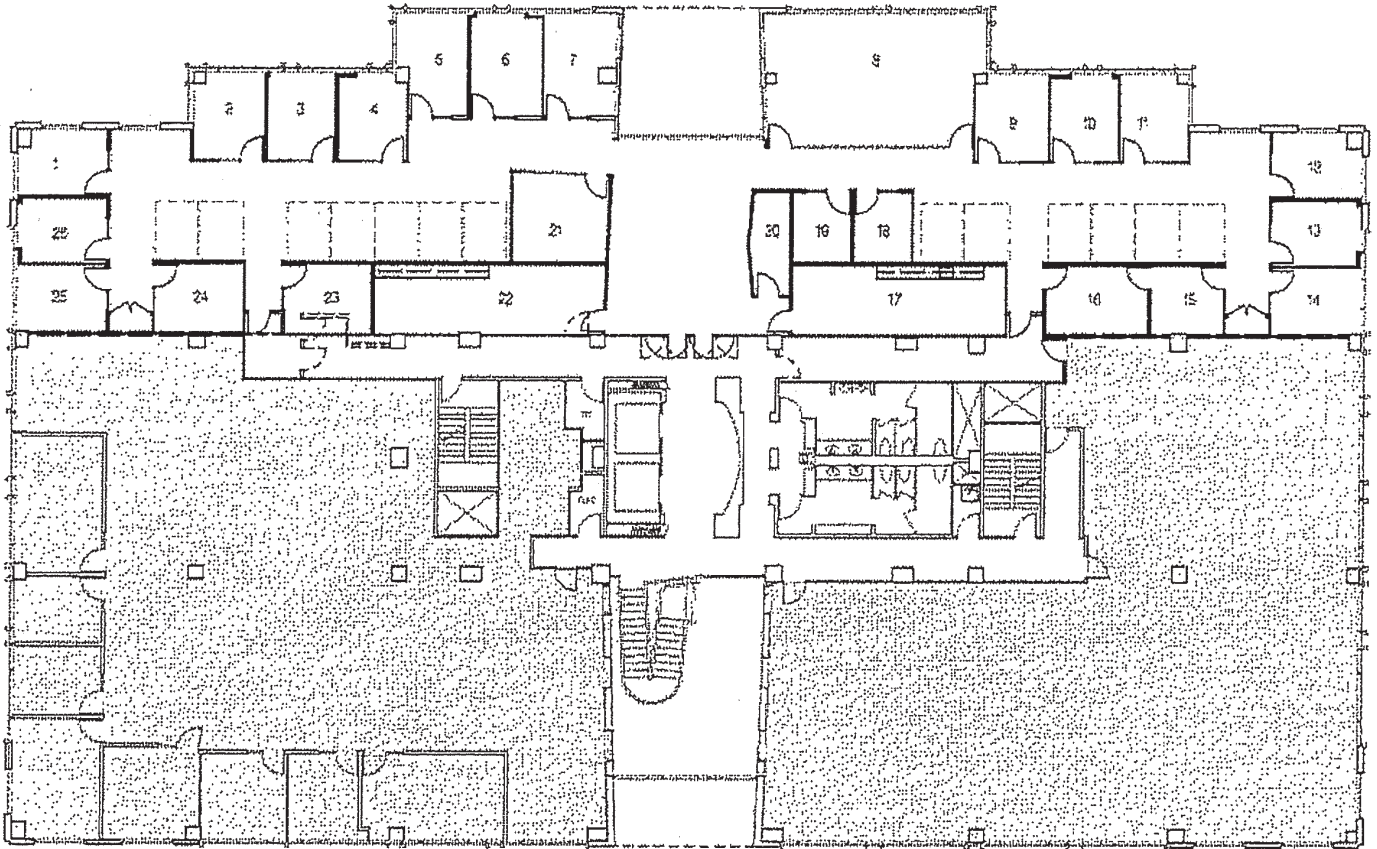
Senior Managing Director  
t 415 412-6366  
Kevin.Delehanty@nmrk.com  
CA RE #00843404

[nmrk.com](http://nmrk.com)

**NEWMARK**

The information contained herein has been obtained from sources deemed reliable but has not been verified and no guarantee, warranty or representation, either express or implied, is made with respect to such information. Terms of sale or lease and availability are subject to change or withdrawal without notice.

## FLOORPLAN | 1001 GALAXY WAY STE 200



*For information, please contact:*

**Rich Hoyt**

Senior Managing Director

t 619-548-7866

Rich.Hoyt@nmrk.com

CA RE #01470213

**Kevin Delehanty**

Senior Managing Director

t 415 412-6366

Kevin.Delehanty@nmrk.com

CA RE #00843404

[nmrk.com](http://nmrk.com)

# NEWMARK

The information contained herein has been obtained from sources deemed reliable but has not been verified and no guarantee, warranty or representation, either express or implied, is made with respect to such information. Terms of sale or lease and availability are subject to change or withdrawal without notice.