

Auto lot and Buildings For Sale

610-622 SOUTHEAST 82ND AVENUE, PORTLAND, OR 97216



Joe Kappler
503.972.7294
joek@macadamforbes.com
Licensed in OR & WA

Todd Collins
503.972.7283
todd@macadamforbes.com
Licensed in OR & WA

2 Centerpointe Drive, Suite 500 | Lake Oswego, OR 97035 | WWW.MACADAMFORBES.COM | 503.227.2500

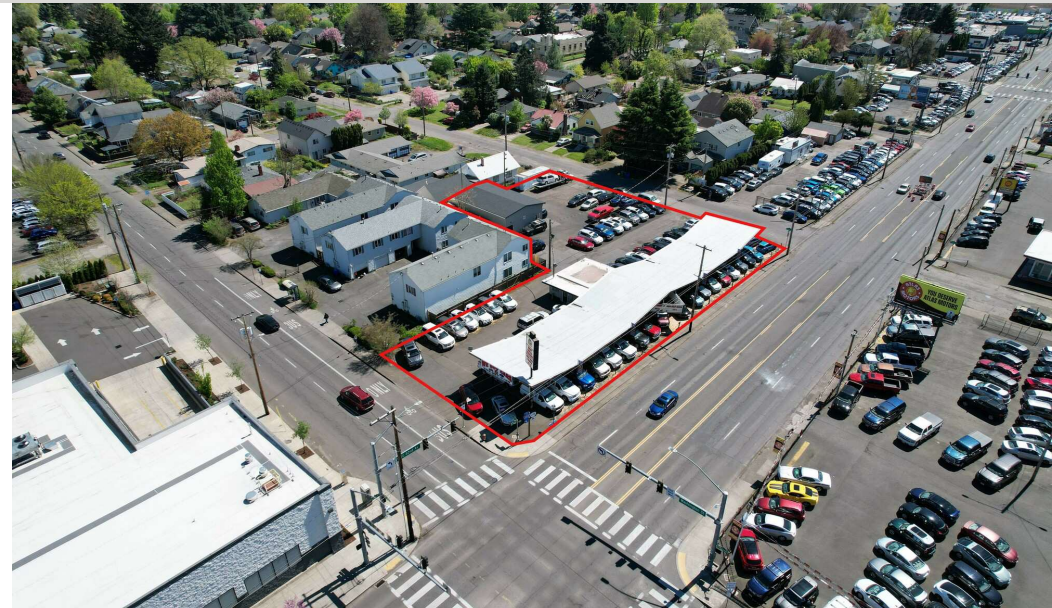
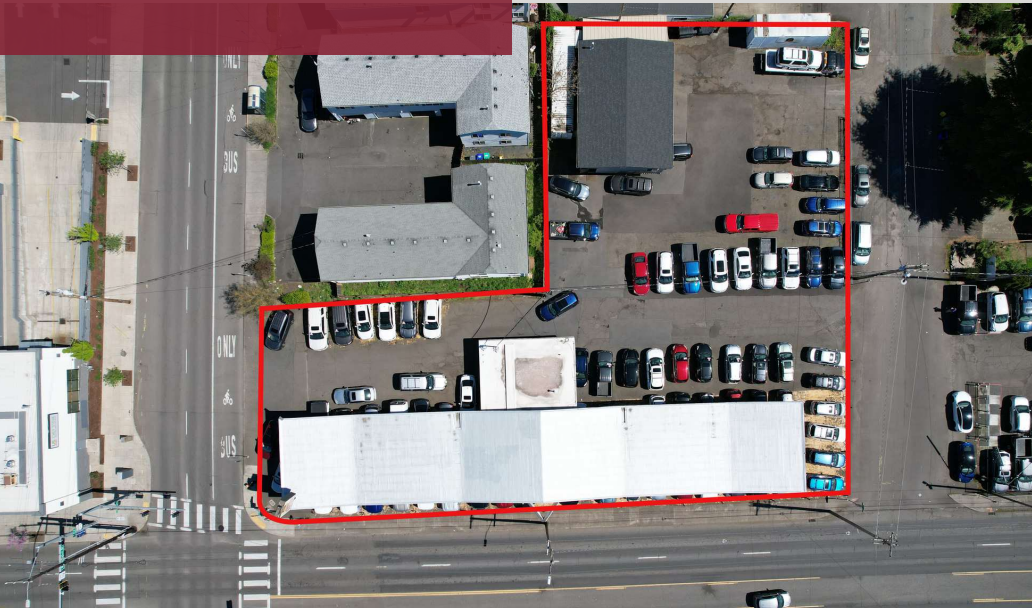
All of the information contained herein was obtained either from the owner or other parties we consider reliable. We have no reason to doubt its accuracy, however we do not guarantee it.

FOR SALE

**MACADAM
FORBES**
COMMERCIAL REAL ESTATE SERVICES

FOR SALE

610-622 Southeast 82nd Avenue, Portland, OR 97216



PROPERTY HIGHLIGHTS

- 8,910 SF total improvements consisting of 1,260 SF office building, 1,650 SF shop and 6,000 SF covered storage. Located in the desirable Montavilla area.
- Zoned CM2 - Commercial Use 2
- Located on the hard corner of SE Washington St. & SE 82nd Ave.
- 200' of street frontage and monument signage on SE 82nd Ave.

OFFERING SUMMARY

Sale Price:	\$1,863,079
Property Taxes:	\$17,750.45
Lot Size:	27,273 SF
Building Size:	8,910 SF



Joe Kappler
503.972.7294
joek@macadamforbes.com
Licensed in OR & WA

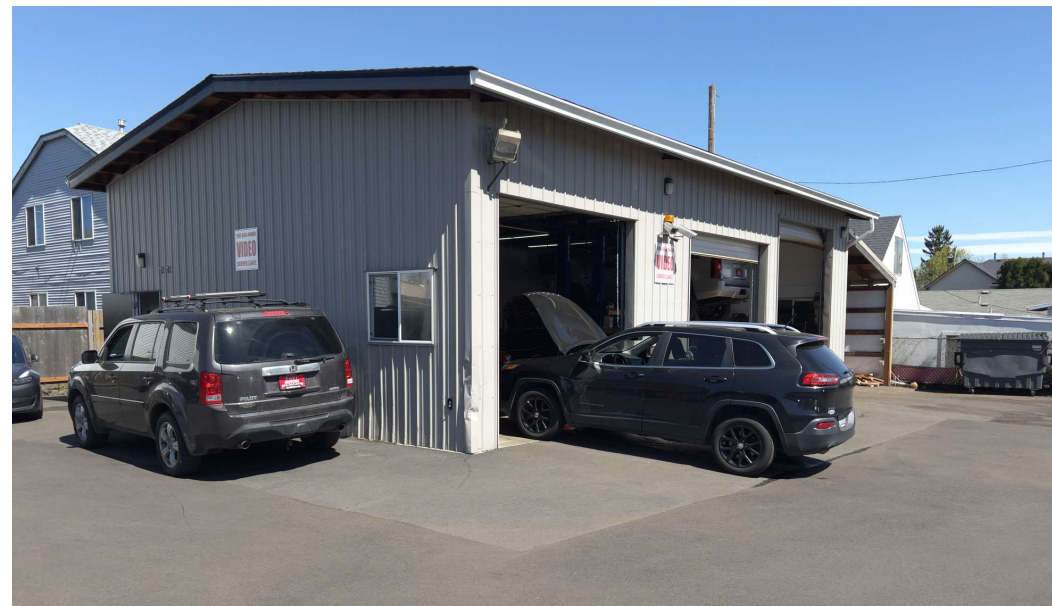
Todd Collins
503.972.7283
todd@macadamforbes.com
Licensed in OR & WA

All of the information contained herein was obtained either from the owner or other parties we consider reliable. We have no reason to doubt its accuracy, however we do not guarantee it.

MACADAMFORBES.COM | 503.227.2500

FOR SALE

610-622 Southeast 82nd Avenue, Portland, OR 97216



Joe Kappler

503.972.7294

joek@macadamforbes.com

Licensed in OR & WA

Todd Collins

503.972.7283

todd@macadamforbes.com

Licensed in OR & WA

All of the information contained herein was obtained either from the owner or other parties we consider reliable. We have no reason to doubt its accuracy, however we do not guarantee it.

MACADAMFORBES.COM | 503.227.2500

FOR SALE

610-622 Southeast 82nd Avenue, Portland, OR 97216



LOCATION OVERVIEW

Discover the vibrant Southeast Portland market surrounding the property, offering a dynamic mix of commerce and culture. Just moments away, the Montavilla neighborhood boasts a thriving community with various local shops, dining, and entertainment options. Enjoy convenient access to major transportation routes, providing easy connectivity to downtown Portland and beyond. Nearby, Mt. Tabor Park offers a picturesque retreat with stunning city views and recreational activities. This sought-after area presents an exciting opportunity for office users/office building investors to become part of an evolving landscape with promising potential for growth and prosperity.

Map data ©2025 Google Imagery ©2025 Airbus, CNES / Airbus, Maxar Technologies, Metro, Portland Oregon, USDA/FPAC/GEO



Joe Kappler

503.972.7294

joek@macadamforbes.com

Licensed in OR & WA

Todd Collins

503.972.7283

todd@macadamforbes.com

Licensed in OR & WA

All of the information contained herein was obtained either from the owner or other parties we consider reliable. We have no reason to doubt its accuracy, however we do not guarantee it.

MACADAMFORBES.COM | 503.227.2500