

CYPRESS MEDICAL PLAZA I

27700 Northwest Freeway | Cypress, TX 77433



Space Features

- 165,671 SF Class A, Outpatient Medical Building
- Second Generation Orthopedics Clinic
- For Sublease, Available June 2026
- Located in the heart of Cypress
- Excellent location with direct access to Hwy 290
- Ample on-site free parking



CYPRESS MEDICAL PLAZA I

27700 Northwest Freeway | Cypress, TX 77433



Sublease Term Expiration

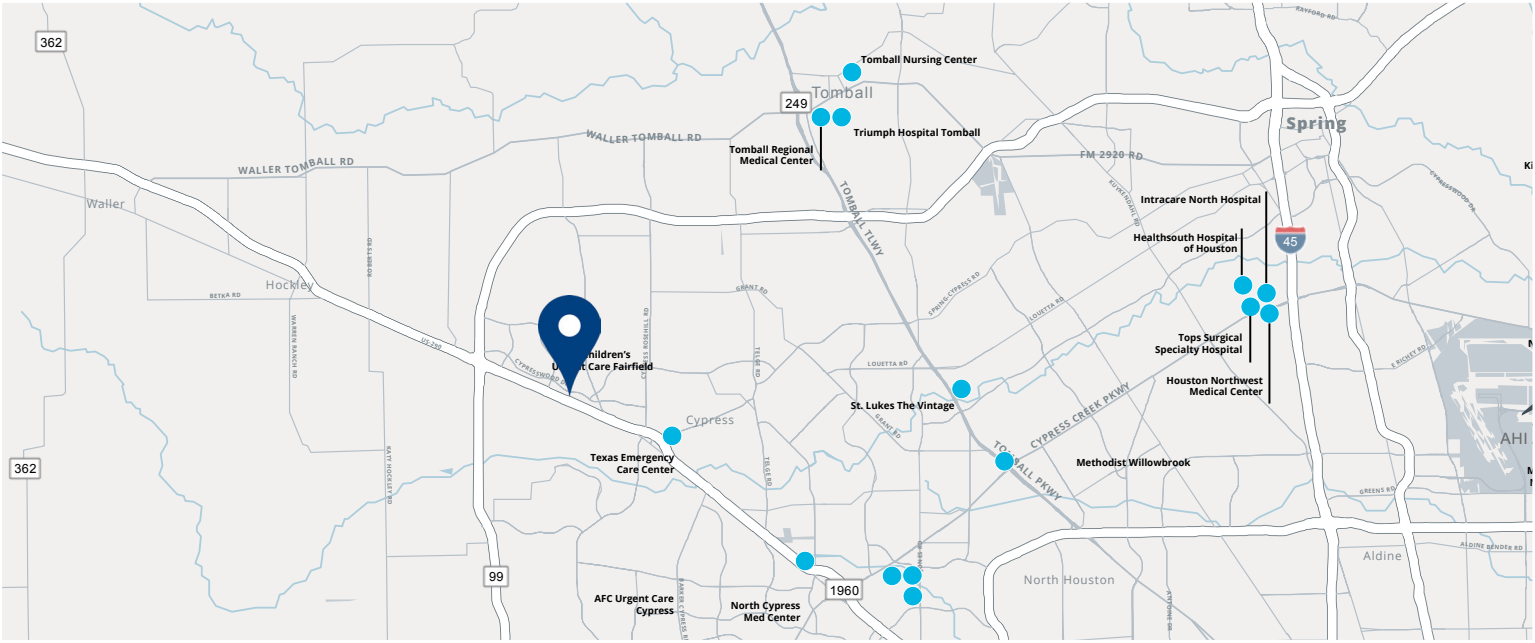
December 31, 2027

Lease Rate

Availability Upon Request

Occupancy

June 15, 2026



Leasing Information:

Lisa Bovermann | SVP
(713) 270-0457
Lisa.Bovermann@transwestern.com

Elise Jaco | Senior Associate
(713) 231-1580
Elise.Jaco@transwestern.com



The information provided herein was obtained from sources believed reliable; however, Transwestern makes no guarantees, warranties or representations as to the completeness of accuracy thereof. The presentation of this property is submitted subject to errors, omissions, change of price or conditions, prior to sale or lease, or withdrawal without notice. Copyright © 2025 Transwestern.

CYPRESS MEDICAL PLAZA I

27700 Northwest Freeway | Cypress, TX 77433

Suite 200

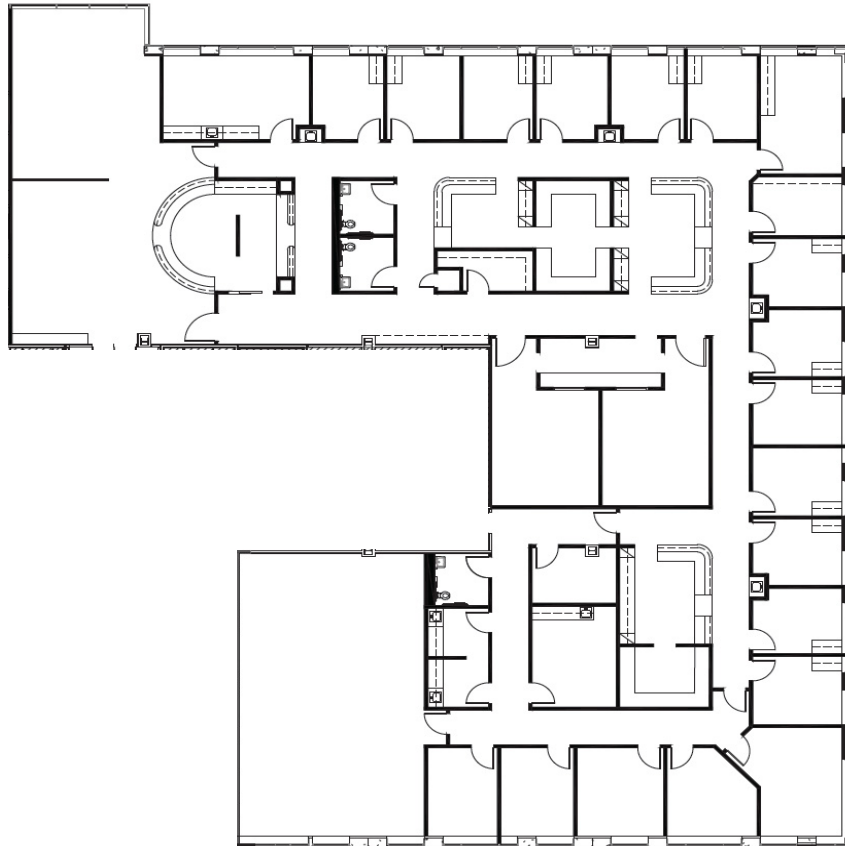
For Sublease

11,773 SF | Medical Office

2nd Generation Orthopedics

Features

- 14 Exam Rooms
- 2 X-Ray Rooms
- 1 Cast Room
- 5 Offices
- 3 Restrooms
- Break Room



Leasing Information:

Lisa Bovermann | SVP
(713) 270-0457
Lisa.Bovermann@transwestern.com

Elise Jaco | Senior Associate
(713) 231-1580
Elise.Jaco@transwestern.com

