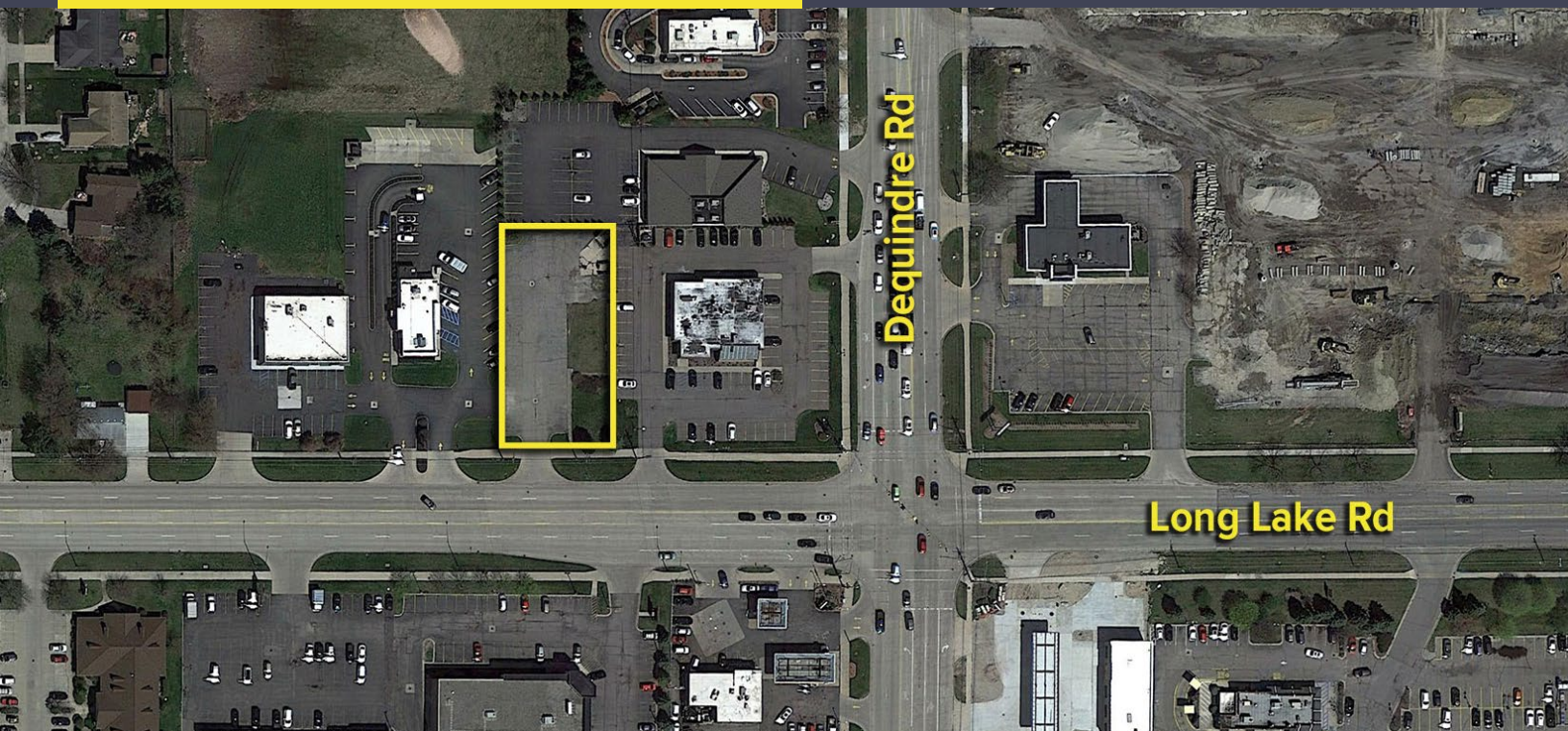


2955 E. LONG LAKE ROAD
TROY, MICHIGAN

VACANT LAND FOR SALE OR LEASE
0.49 Acres Available



SIGNATURE ASSOCIATES
KNOW SIGNATURE | KNOW RESULTS



PROPERTY FEATURES

- 0.49 acres available
- Zoned Neighborhood Nodes
- Excellent development opportunity for retail, office, or medical
- Sits among many national retailers and restaurants including Kroger, Walgreen's, McDonald's, Arby's, Taco Bell and others
- Contact Broker for sale price and lease rate



For more information, please contact:

MARVIN PETROUS

(248) 359 0647

mpetrous@signatureassociates.com

BRUCE BAJA

(248) 799 3177

bbaja@signatureassociates.com

SIGNATURE ASSOCIATES

One Towne Square, Suite 1200

Southfield, MI 48076

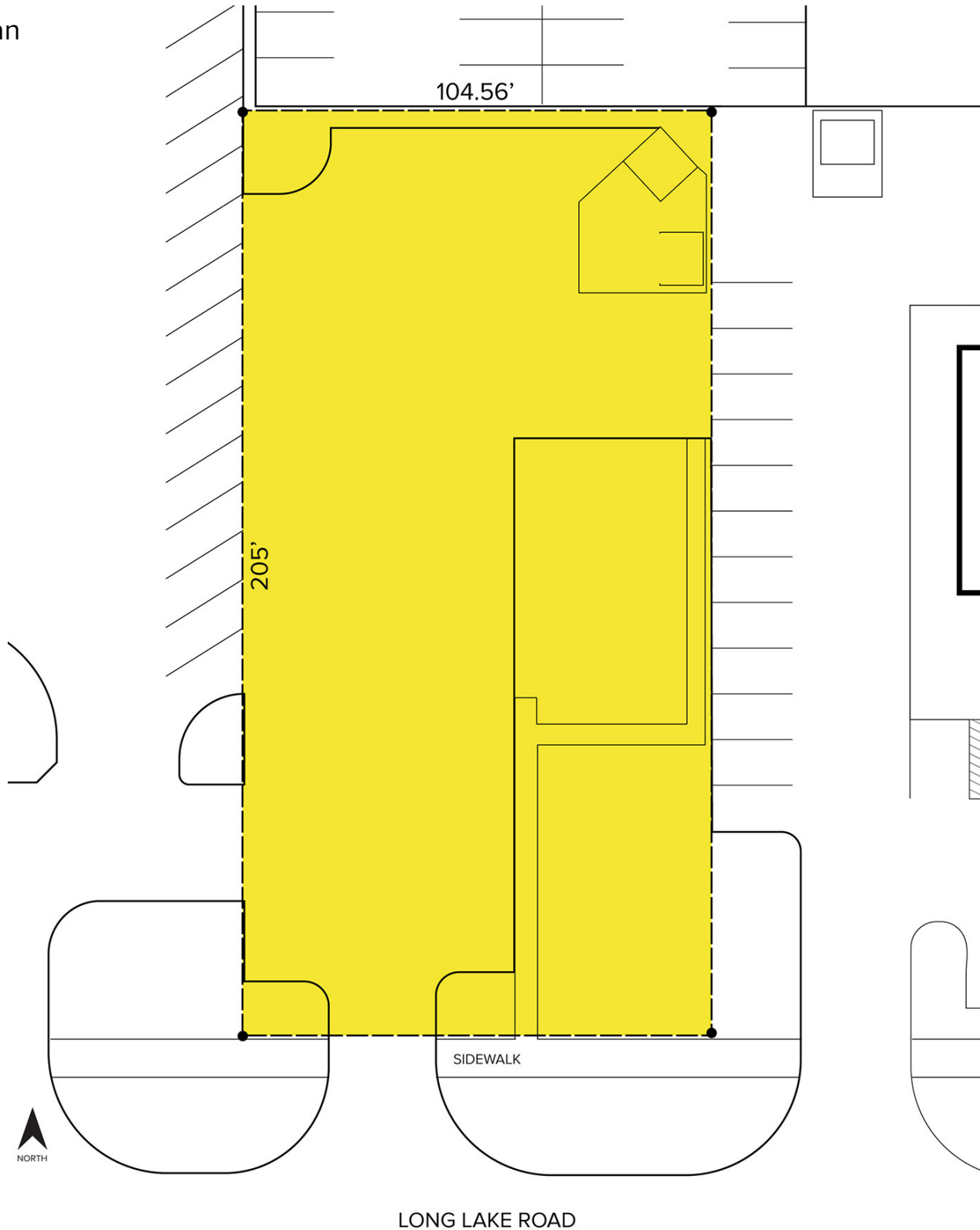
www.signatureassociates.com

2955 E. Long Lake Road – Troy, Michigan

Land For Sale or Lease

0.49
Acres
AVAILABLE

Site Plan



For more information, please contact:

MARVIN PETROUS
(248) 359 0647
mpetrous@signatureassociates.com

BRUCE BAJA
(248) 799 3177
bbaja@signatureassociates.com

SIGNATURE ASSOCIATES
One Towne Square, Suite 1200
Southfield, MI 48076
www.signatureassociates.com

2955 E. Long Lake Road – Troy, Michigan

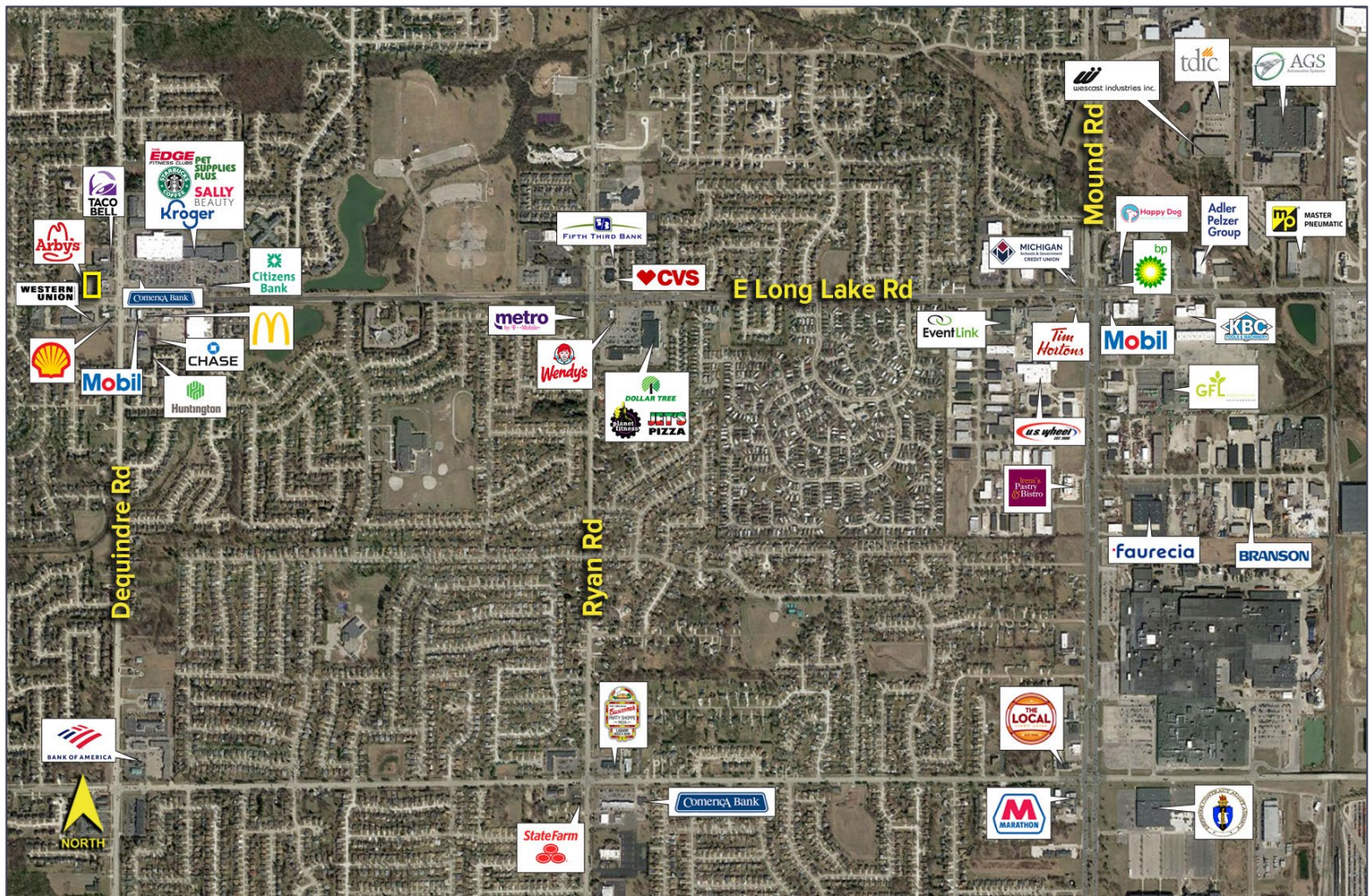
Land For Sale or Lease

0.49
Acres
AVAILABLE

DEMOGRAPHICS		
	POPULATION	MED. HH INCOME
1 MILE	12,578	\$104,472
3 MILE	96,781	\$88,324
5 MILE	232,767	\$83,929

TRAFFIC COUNTS (TWO-WAY) 2022	
17,291	Long Lake Rd. W. of Dequindre Rd.
17,551	Long Lake Rd. E. of Dequindre Rd.
23,588	Dequindre Rd. N. of Long Lake Rd.
24,616	Dequindre Rd. S. of Long Lake Rd.

Labeled Aerial



For more information, please contact:

MARVIN PETROUS
(248) 359 0647
mpetrous@signatureassociates.com

BRUCE BAJA
(248) 799 3177
bbaja@signatureassociates.com

SIGNATURE ASSOCIATES
One Towne Square, Suite 1200
Southfield, MI 48076
www.signatureassociates.com