

# PLATINUM 973 BUSINESS CENTER

13801 FM 973  
Manor, Texas 78653



## FOR LEASE

### AVAILABLE SPACE

1,200 – 7,500 SF  
1,200 – 7,500 SF

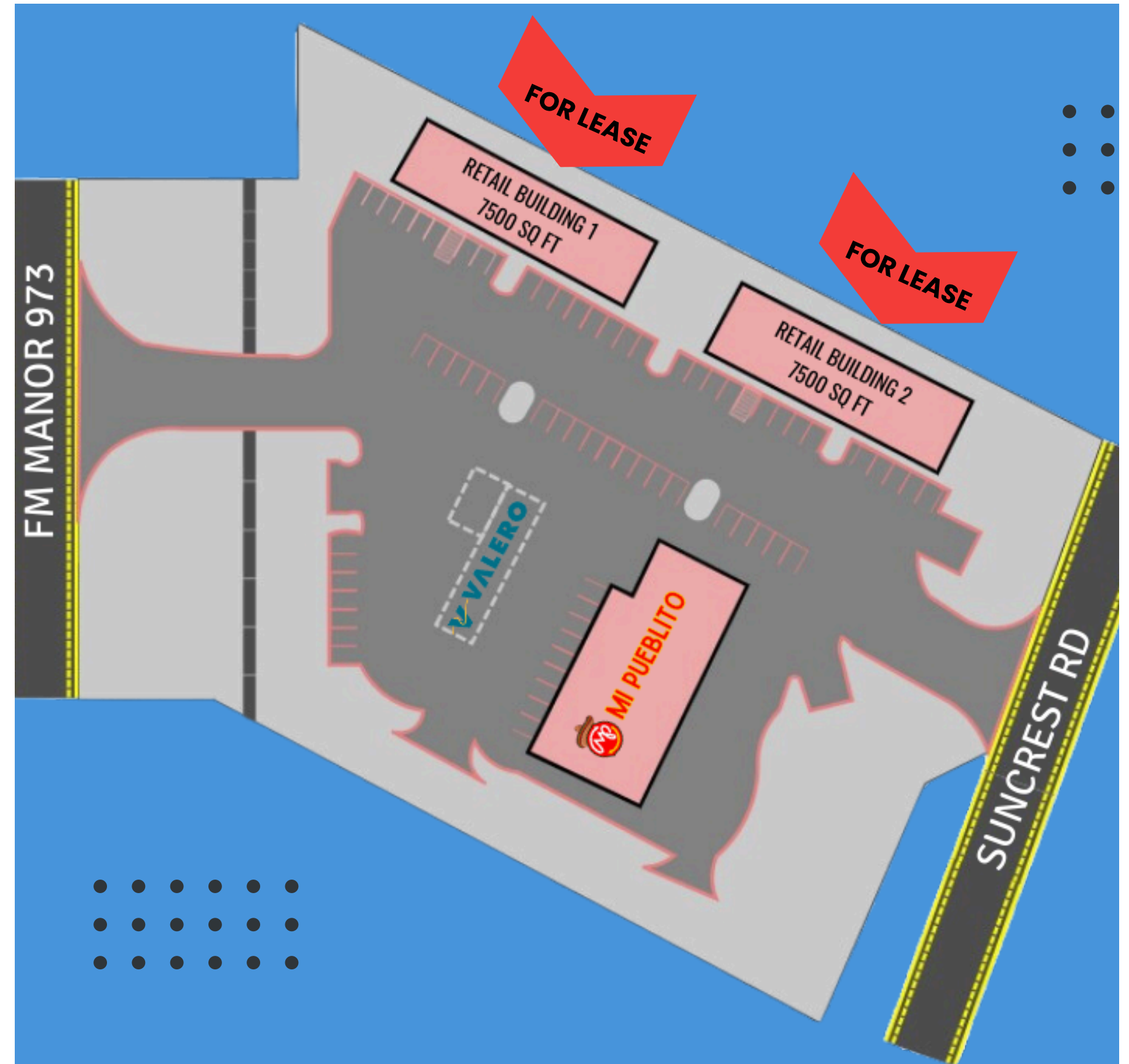
### CONTACT FOR RATE

Rifa Maknojia  
512.965.5510

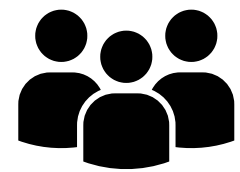
Rafiq Karediya  
512.850.3331

# PROPERTY HIGHLIGHTS

- Multi-tenant retail and office complex in the heart of Manor, TX
- Located just ONE mile away from intersection of FM 973 & HWY 290
- Adjustable square footage to match your business requirements (up to 7,500 Sq. Ft)
- Located right next to Compass Rose Destiny School and across from the Shadow Glen Community

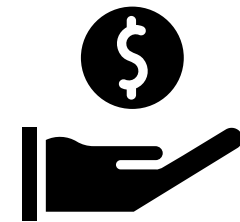


# DEMOGRAPHIC SNAPSHOT



POPULATION

- 2024 Manor Population: **16,026**
- 2029 Manor Population (Forecast): **42,770**



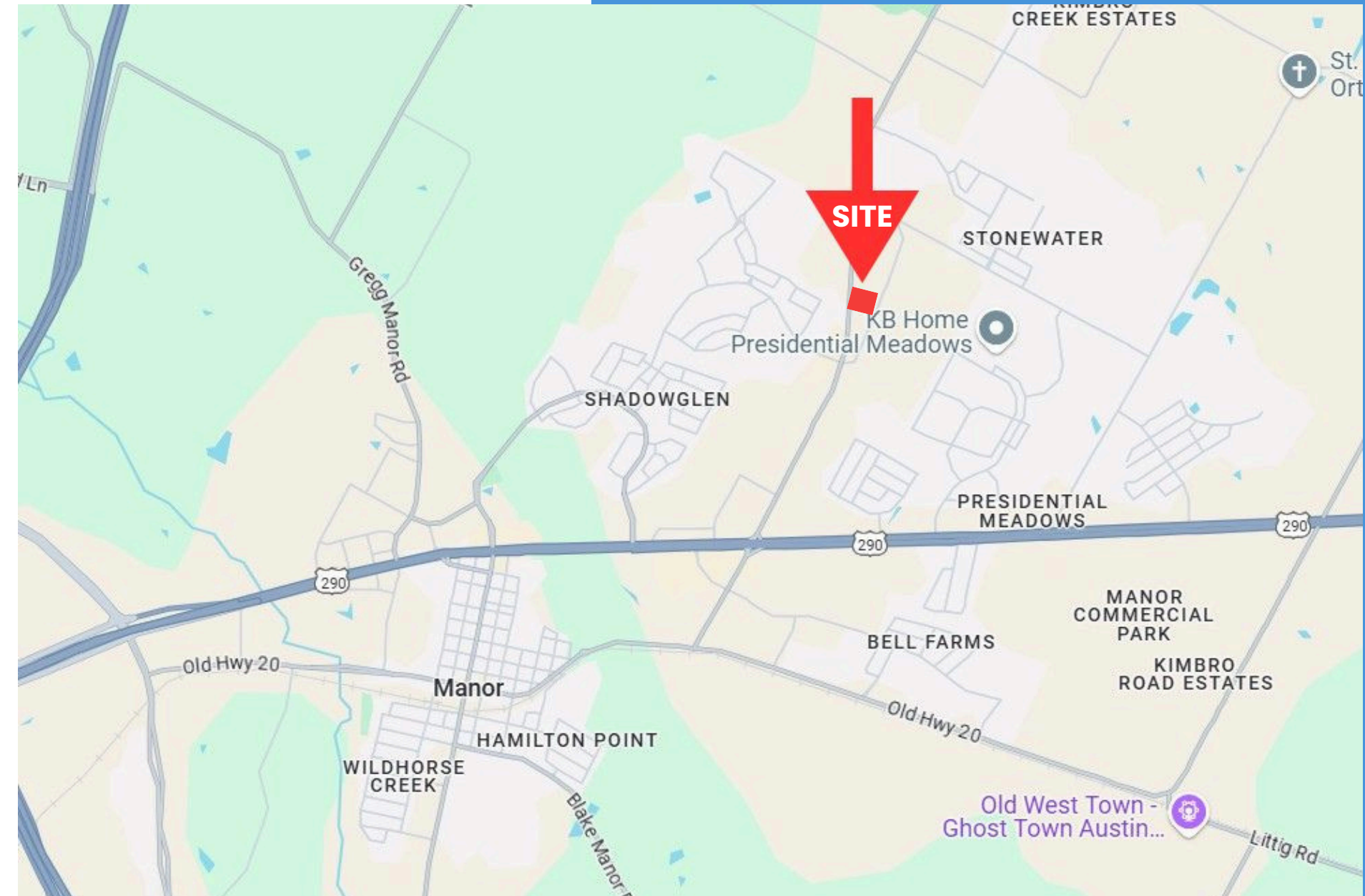
INCOME

- 2024 Manor Average HH Income: **\$107,007**
- 2024 Manor Median HH Income: **\$98,618**

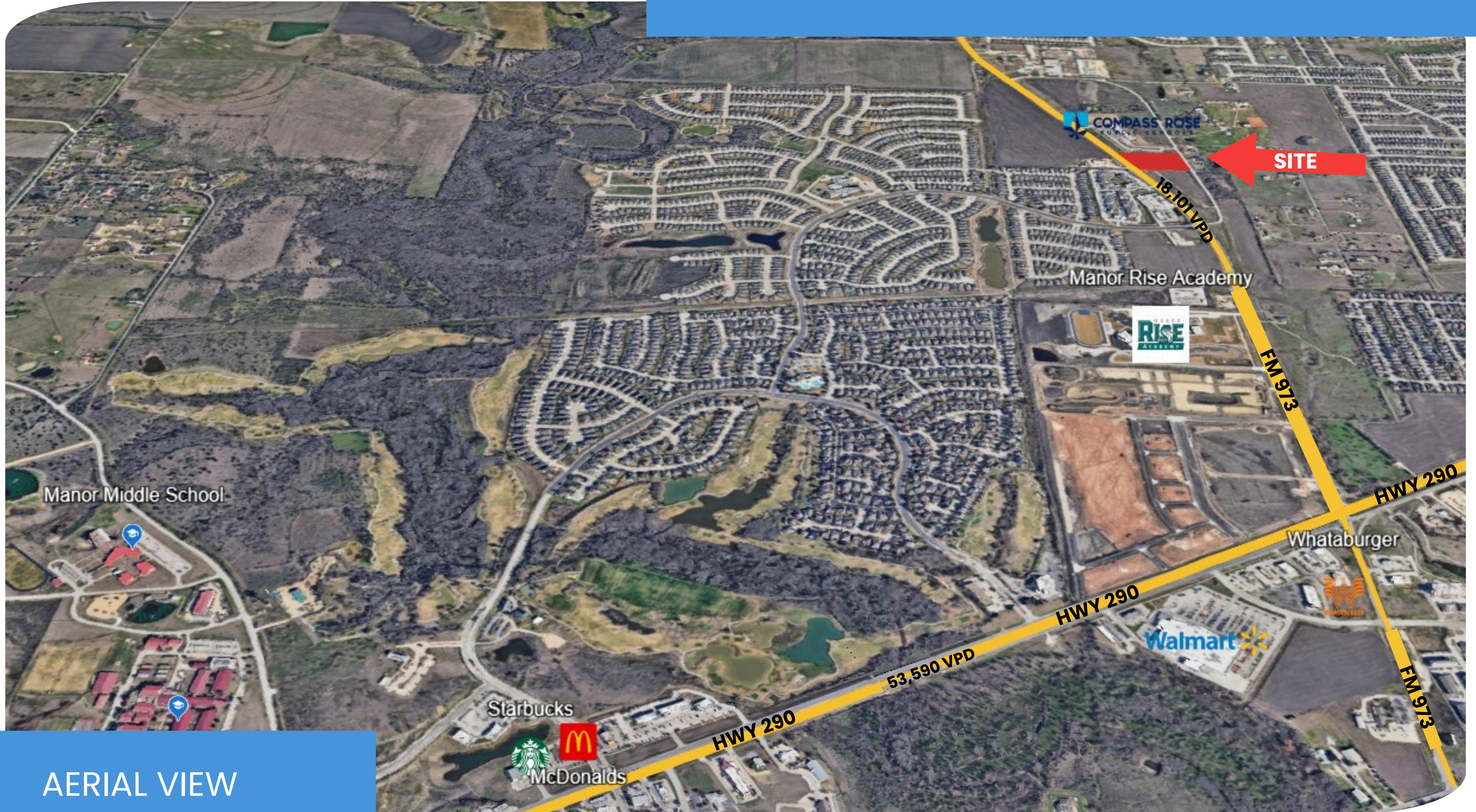


TRAFFIC

- HWY US 290: **53,590 VPD** (2023)
- FM 973: **18,101 VPD** (2023)



PLATINUM 973 | 13801 FM 973, MANOR, TX, 78653



AERIAL VIEW

