



# ONE BROADWAY EXECUTIVE PARK

201 NW 63<sup>RD</sup> ST, OKLAHOMA CITY, OK 73116

# MEET BROADWAY EXECUTIVE PARK

One Broadway Executive Park is an upscale business park with handsome buildings, extensive landscaping and ample, lighted parking next to each building to provide a positive corporate image.

At Northwest 63rd Street and the Broadway Extension, Broadway Executive Park provides tenants prominent visibility and identity, convenient ingress and egress and excellent access to all destinations within the metropolitan area. Remodeled in 2024.

## PROPERTY INFORMATION

Year Built   Renovated	1980   2024
Floors	3
Total Square Feet	58,832 sf
Available Square Feet	14,006 sf
Rate	\$17.50 + Full Service
Class	B
Submarket	North
Parking	Abundant Surface

## HIGHLIGHTS

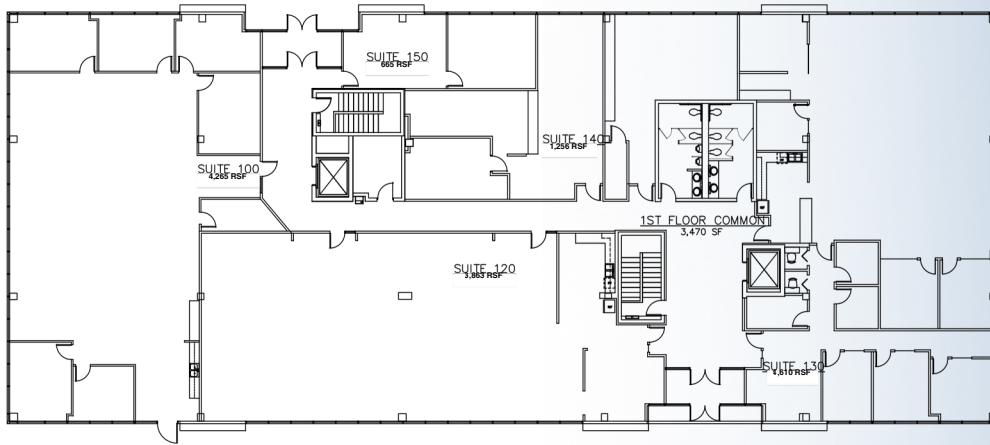
- Efficiency and flexibility are achieved in office space layout | Signage available
- On-site maintenance engineer
- Well-lit parking adjacent to each building
- 22-acre park has attractive landscaping that is well-maintained throughout the year
- Local Ownership | Local Management | Local team of Engineers
- Security: After-hours key-pad access | Roaming Security Guard



# AVAILABLE SPACE

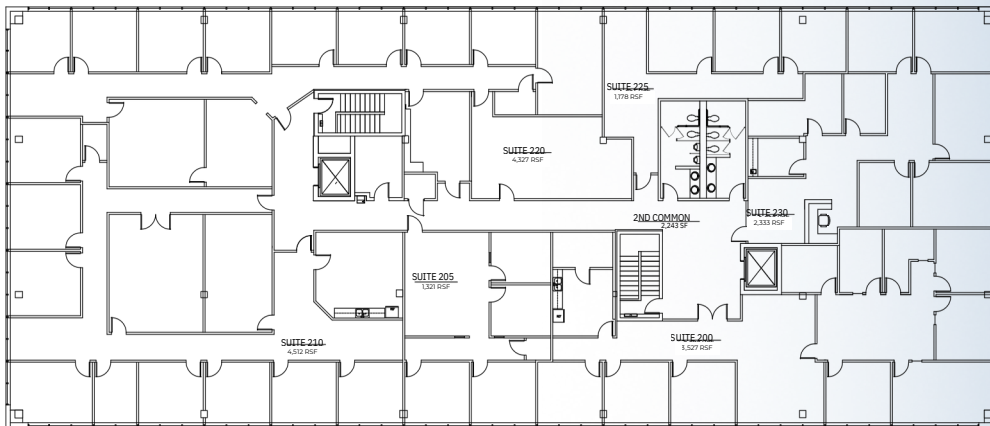
## FIRST FLOOR

- Suite 120 | 3,863 RSF



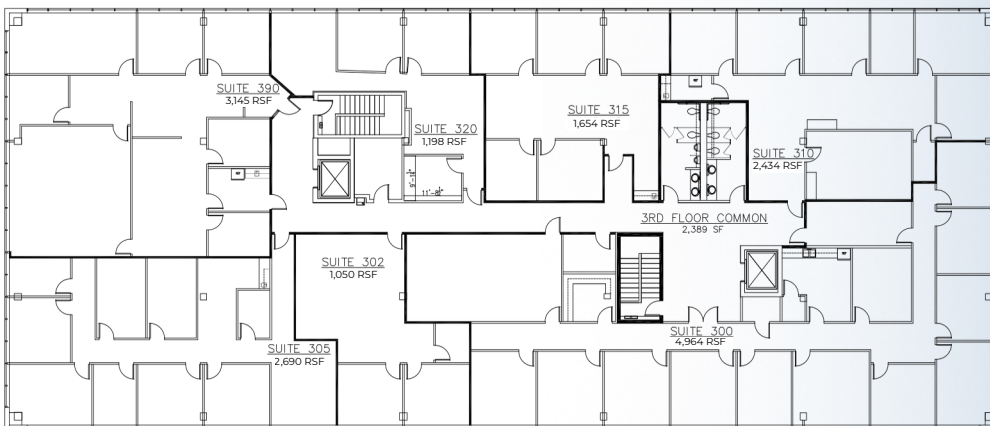
## SECOND FLOOR

- Suite 205 | 1,321 RSF
- Suite 220 | 4,327 RSF



## THIRD FLOOR

- Suite 302 | 1,050 RSF





N-WESTERN AVE

COLUMBUS SQUARE



BROADWAY EXECUTIVE PARK

Casey's Casey's

NW 63RD ST

NW 63RD ST

EVA MCMOSNI BOBWIN

PARAGON



N-WESTERN AVE

NW GRAND BLVD



BISHOP MCGUINNES HIGH SCHOOL

CVS

North OKC absolute balance

CLASSEN CURVE

BANK OF AMERICA

WELLS FARGO

CHASE

FLOWER CHILD



NOTHING BUT CAKES



SPARK



UPPER CRUST WOOD FIRED PIZZA

CAVA west elm



ANTHROPOLOGIE

TECOVAS

SEPHORA



[solidcore]

TRADER JOE'S



GRAND DENTAL STUDIO



CALVERT



THE FAMILY TREE



JMA



JUNIOR LEAGUE OKLAHOMA CITY



IFS

MIDFIRST BANK



OHFA



H-E-B

# BROADWAY EXECUTIVE

**WIGGIN**  
PROPERTIES, LLC

## CONTACT

---



**NICK BENTLEY**

VP of Brokerage  
nbentley@wigginprop.com  
405.408.5428



**IAN SIOUX**

Advisor  
iansioux@wigginprop.com  
405.659.6782