



Mint Hill Festival

6914 Matthews-Mint Hill Road | Charlotte, NC 28227



Available for Lease

Up to +/- 1,934 SF Expansion Shop Space

Property Overview

Mint Hill Festival Available for Lease

Expansion shop space available for lease at Mint Hill Festival, a premium location in downtown Mint Hill. The center is highly accessible, less than 2 miles to I-485, and within walking distance to Municipal offices and schools.

Property Details

Address 6914 Matthews-Mint Hill Road | Charlotte, NC 28227

Availability Up to +/- 1,934 SF Expansion Shop Space Available

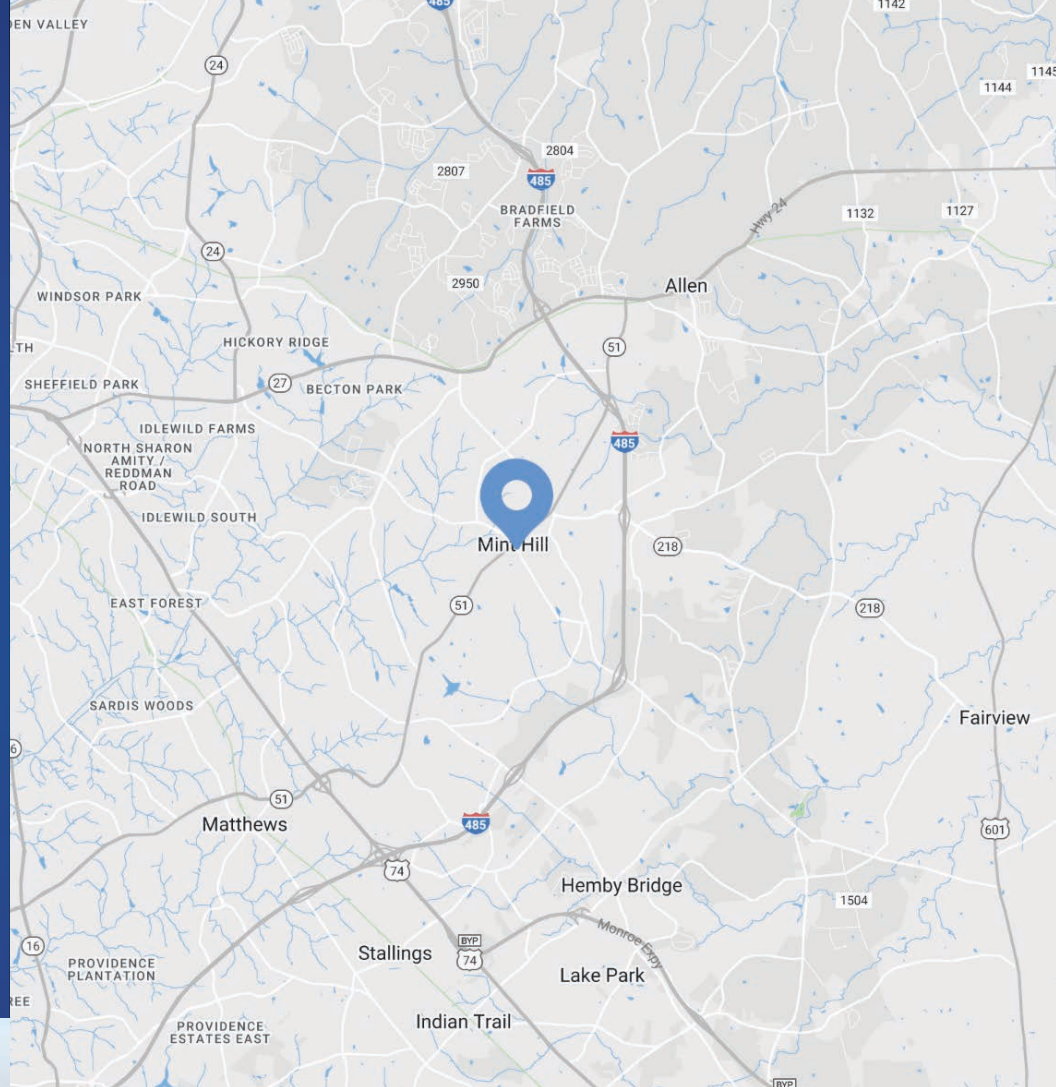
GLA +/- 59,047 SF

Parking Ample parking

Traffic Counts Matthews-Mint Hill Road | 19,000 VPD
Lawyers Road | 9,800 VPD

Lease Rate Call for Leasing Details

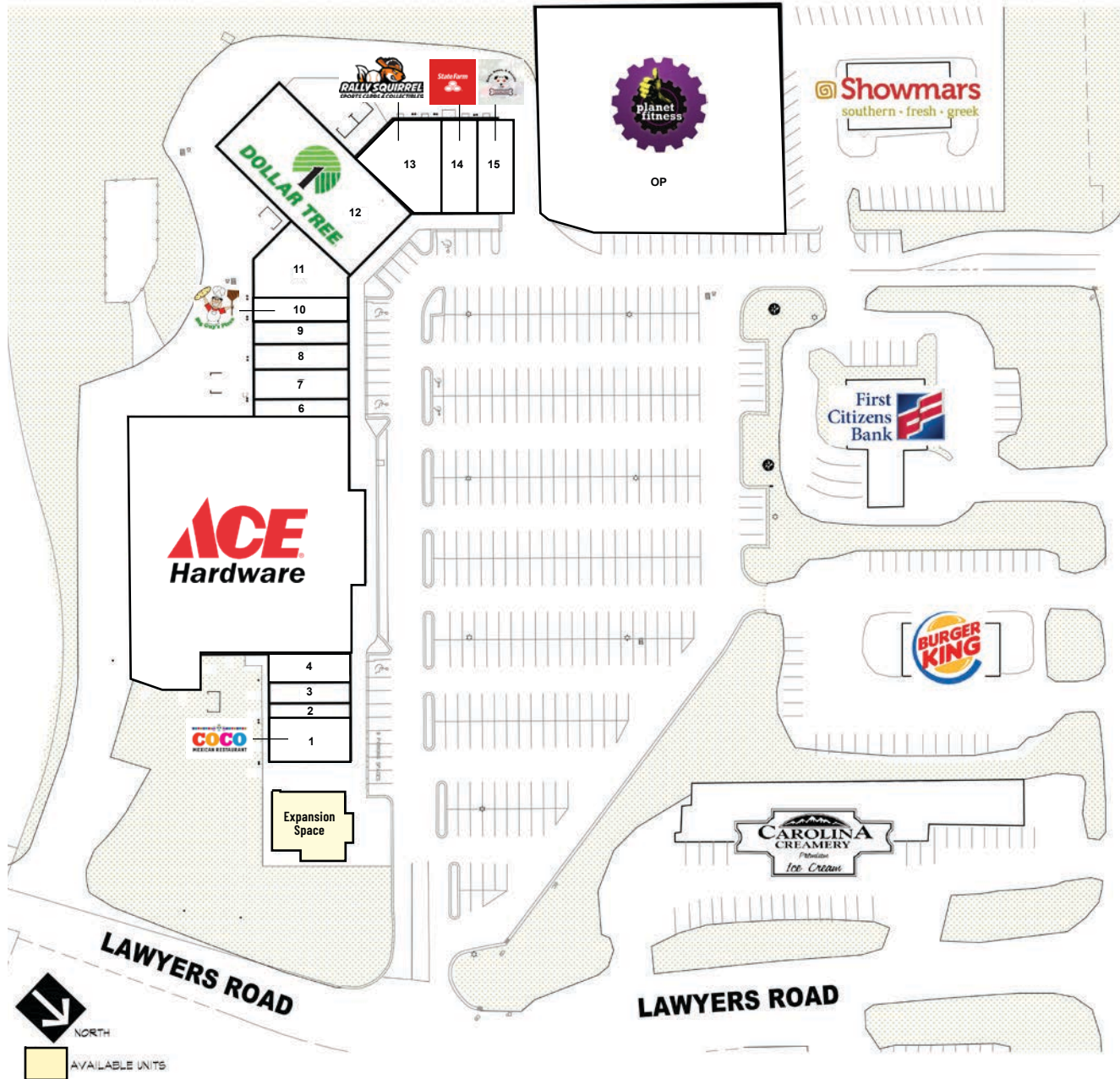
Additional Details **DO NOT DISTURB TENANT



 [Drone Video](#)

Demographics

RADIUS	1 MILE	3 MILE	5 MILE
2023 Population	3,631	33,222	124,282
Avg. Household Income	\$116,504	\$115,836	\$97,969
Median Household Income	\$90,236	\$86,214	\$71,599
Households	1,437	12,257	45,910
Daytime Employees	2,578	7,620	33,276



MATTHEWS-MINT HILL ROAD

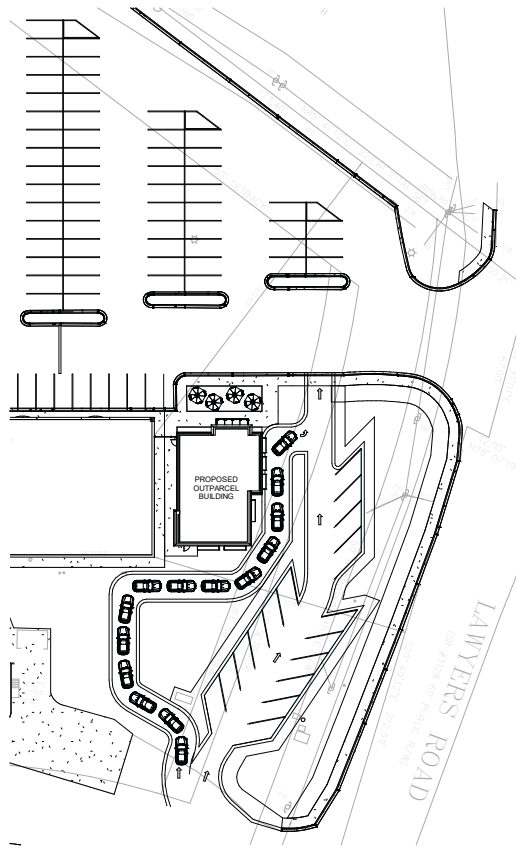
Tenant Roster

Unit	Tenant	Area
1	Coco Mexican Restaurant	2,646 SF
2	Gold and Silver Mint	840 SF
3	Cut & Company 2	1,170 SF
4	Superior Insurance	1,080 SF
5	Ace Hardware	29,781 SF
6	Cut & Company	800 SF
7	Daebak Korean Restaurant	1,500 SF
8	Mint Hill Carpets	1,260 SF
9	Perfectly Polished Nails	1,050 SF
10	Big Guy's Pizza	1,052 SF
11	Your Local Game Store	3,340 SF
12	Dollar Tree	8,640 SF
13	Rally Squirrel Sports Cards & Collectibles	2,377 SF
14	State Farm	1,500 SF
15	Barks, Bones & Biscuits	2,270 SF
	Expansion Space	Up to 1,934 SF
OP	Planet Fitness	0.71 AC

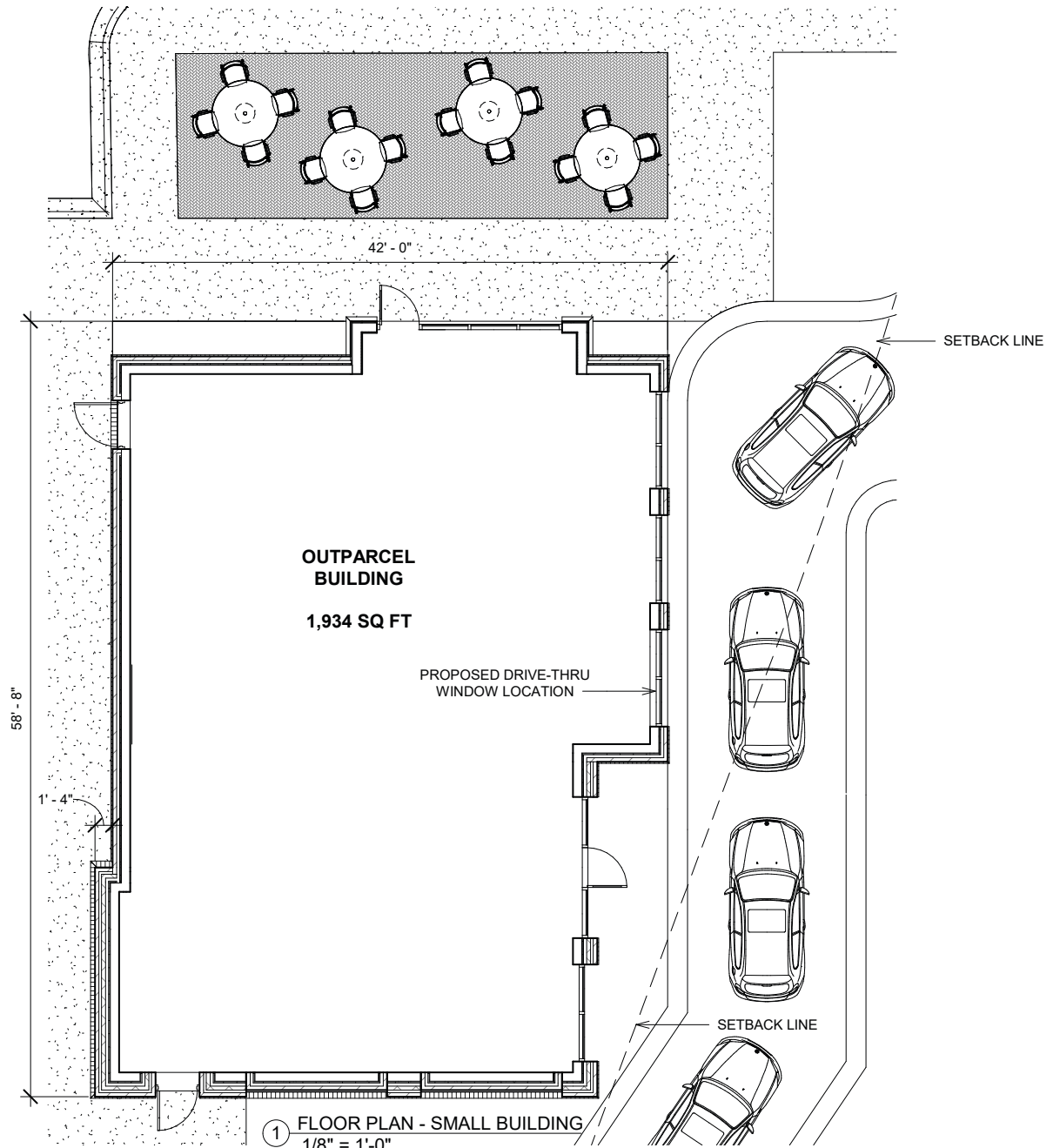


Available

Expansion Shop Space
Up to 1,934 SF

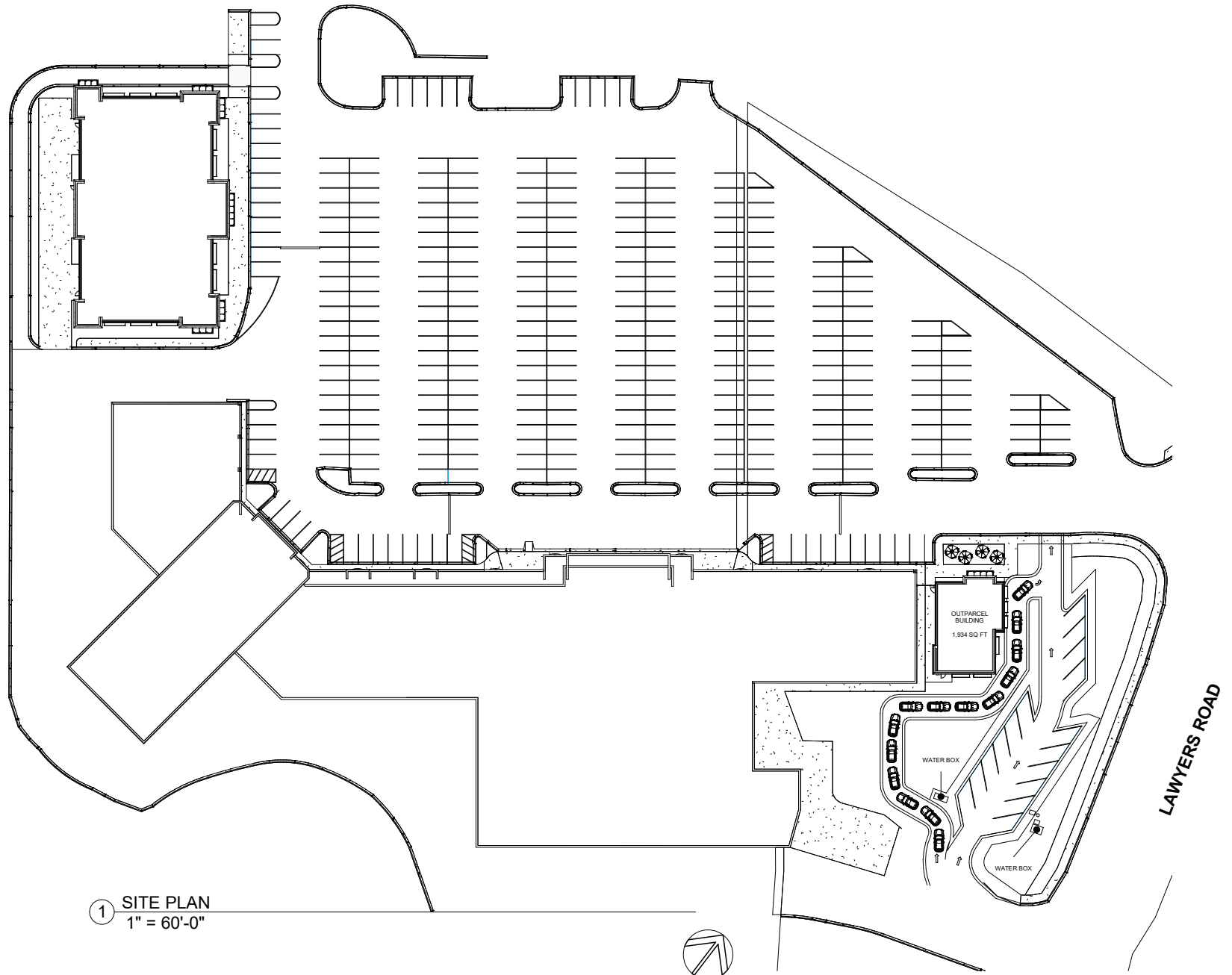


② KEY PLAN
1" = 60'-0"



① FLOOR PLAN - SMALL BUILDING
1/8" = 1'-0"

Floor Plan - Expansion Shop Space

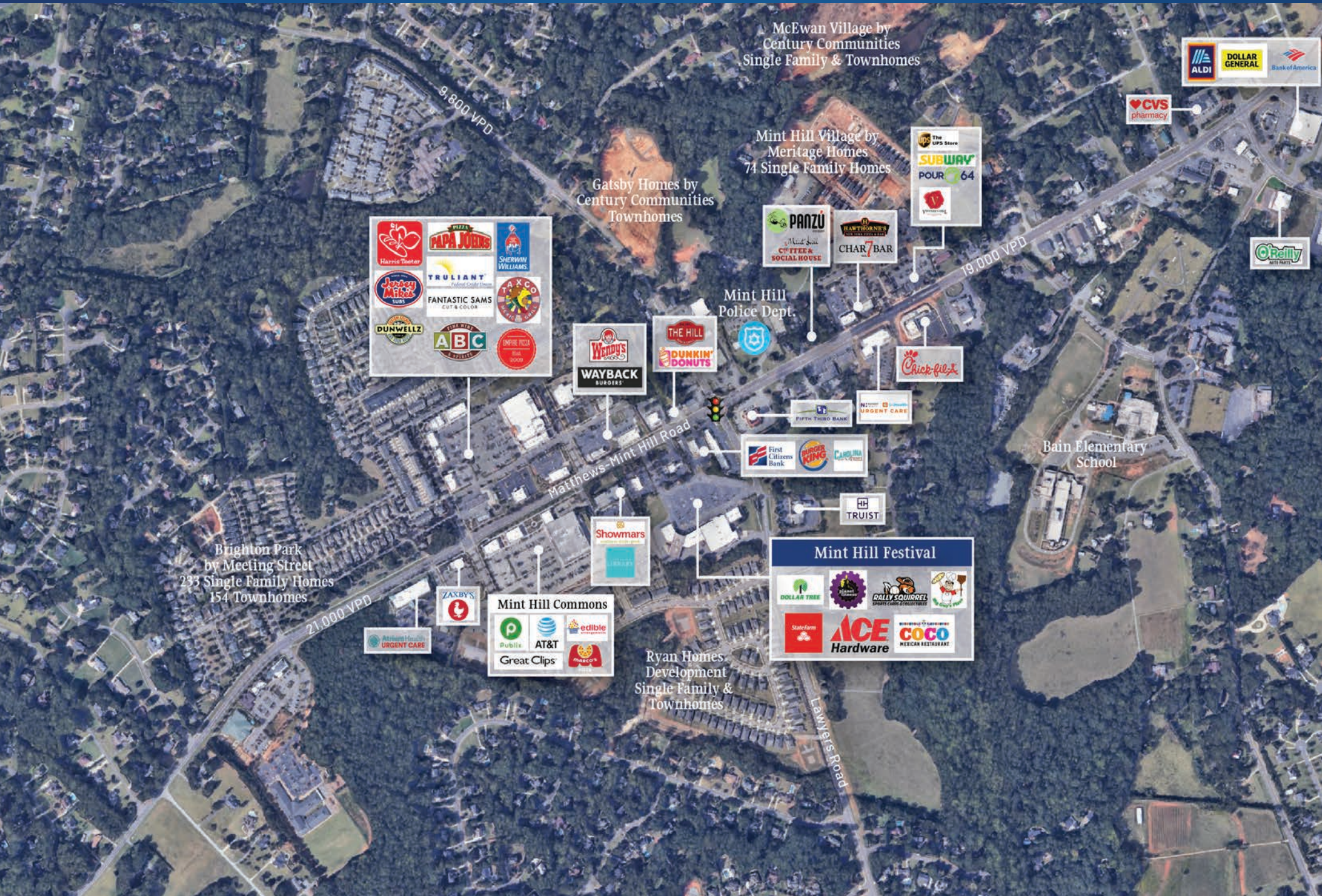


① SITE PLAN
1" = 60'-0"

Expansion Shop Space - Renderings



Market Overview



McEwan Village by Century Communities
Single Family & Townhomes



Mint Hill Village by Meritage Homes
74 Single Family Homes



Gatsby Homes by Century Communities
Townhomes



Mint Hill Police Dept.



Brighton Park by Meeting Street
233 Single Family Homes
154 Townhomes



Bain Elementary School

Ryan Homes Development
Single Family & Townhomes





Contact for Details

Josh Beaver

(704) 749 - 5726

josh@thenicholscompany.com



Website

www.TheNicholsCompany.com

Phone

Office (704) 373-9797

Fax (704) 373-9798

Address

1204 Central Avenue, Suite 201
Charlotte, NC 28204

This information has been obtained from sources believed to be reliable. While we do not doubt its accuracy, we have not verified it and make no guarantee, warranty or representation to independently confirm its accuracy and completeness.