



Artistic rendering subject to change.

# 330 Potrero Avenue

SUNNYVALE, CA

±35,654 SF (Divisible to ±10,000 SF)

 IRVINE COMPANY | **CBRE**





Artistic rendering subject to change.

# Property Highlights

## WORKSPACE

- ±35,654 SF (Divisible to ±10,000 SF)

## BRAND NEW MARKET READY WORK

- Large open floor plan with high-end improvements
- Title 24 compliant
- New 10' glass facades and entry features
- Excellent signage and identity opportunity
- New restroom cores with showers
- Large production/assembly/lab area

## NEW OUTDOOR AREAS

- New landscaping throughout
- Nine (9) EV charging stations

## HVAC SERVICE

- 158 tons service the Premises

## LOADING

- Two (2) grade level loading doors

## ELECTRICAL SERVICE

- 1,600 amps @ 277/480 volts

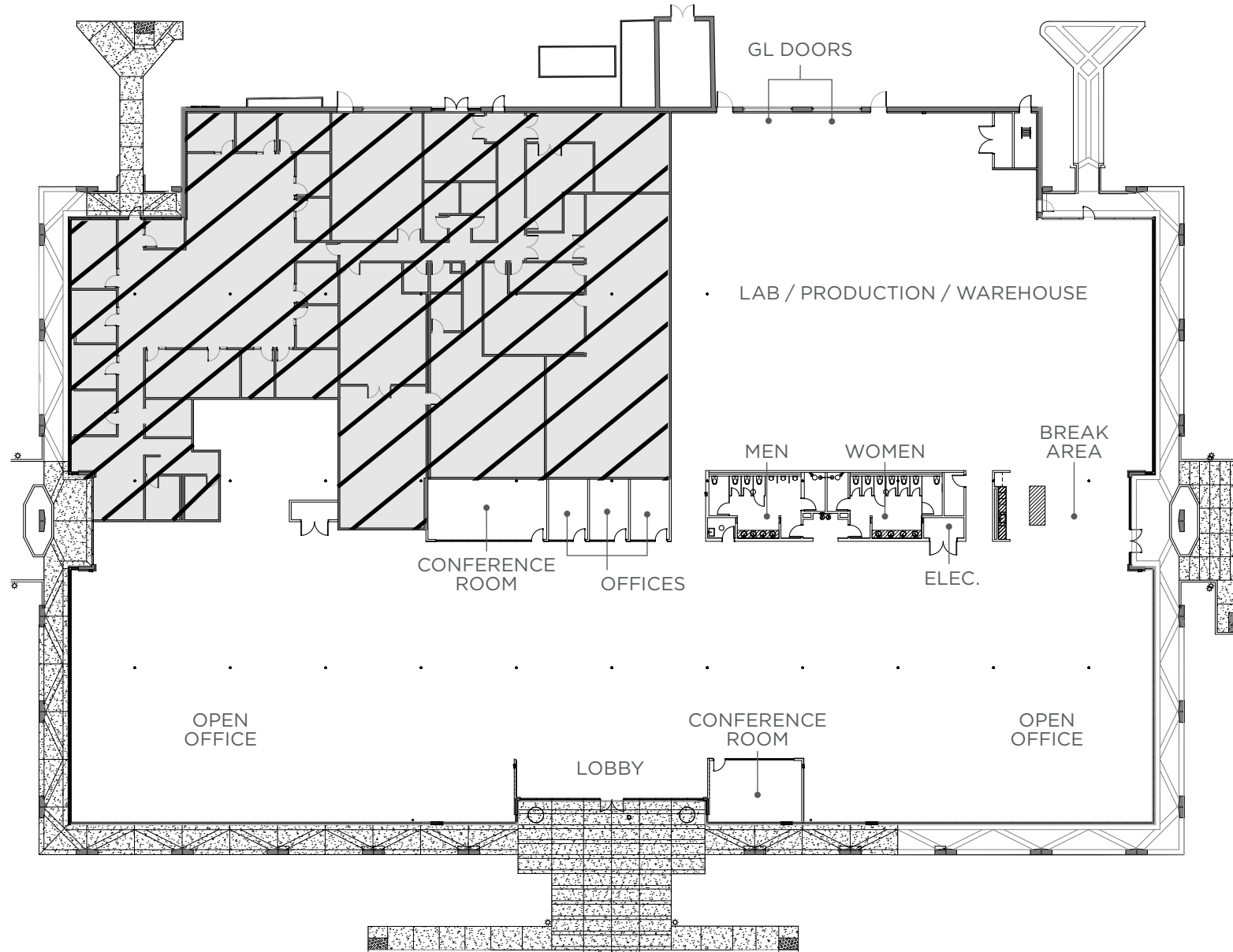
## PUBLIC TRANSPORTATION

- Walking distance to Sunnyvale Caltrain station
- Immediate access to Central Expressway, Highway 237 and 101

# Floor Plan

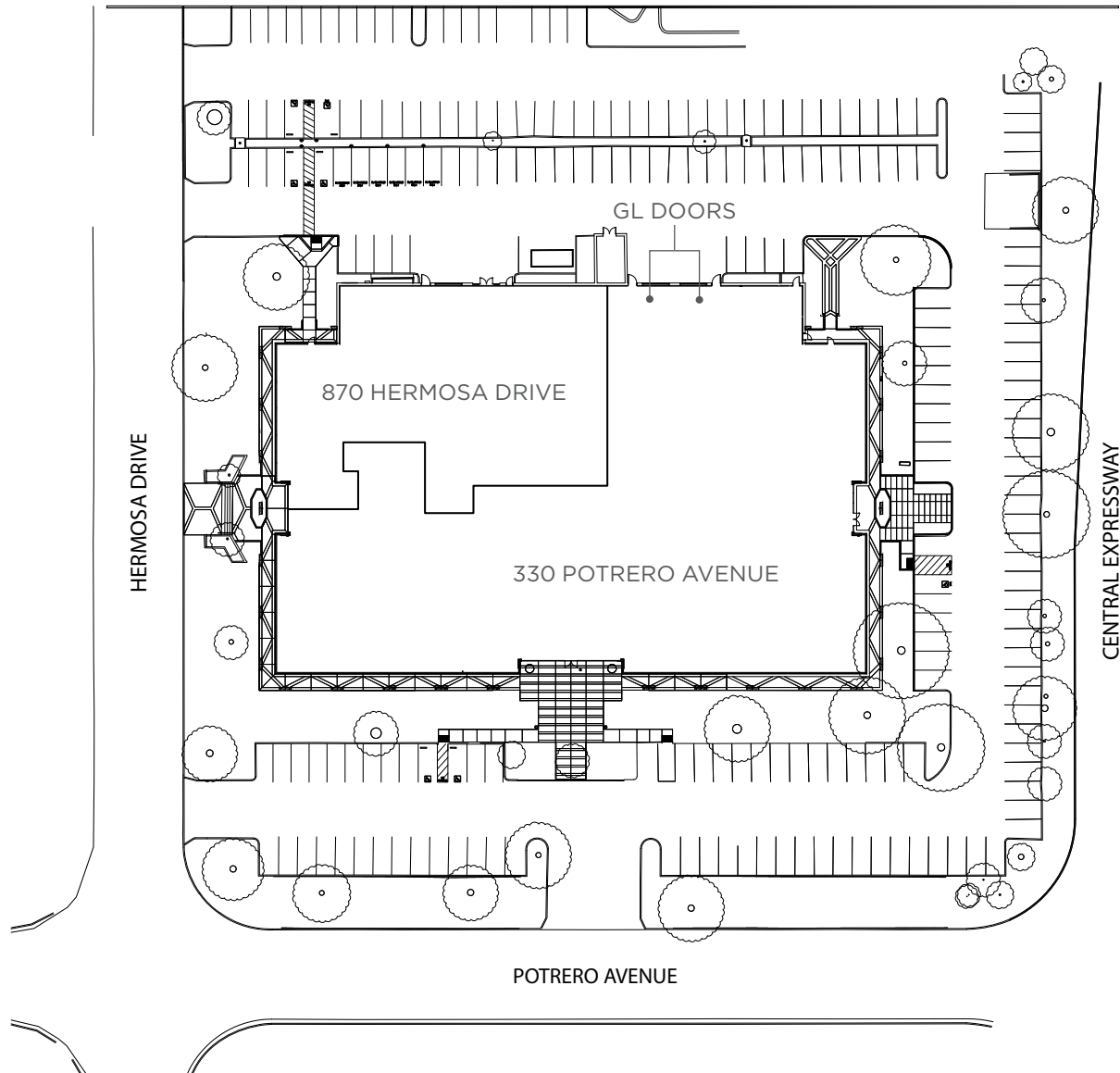
330 POTRERO AVENUE, SUNNYVALE

±35,654 SF



# Site Plan

330 POTRERO AVENUE, SUNNYVALE





# Amenities & Transit

330 POTRERO AVENUE, SUNNYVALE



330 POTRERO AVENUE



15 MIN WALK TO STATION

PHOVEVER  
FLYWHEEL SPORTS  
KABUL AFGHAN CUISINE

FIREHOUSE GRILL & BREWERY  
TAVERNA BISTRO  
MEZZE TURKISH BBQ  
K TEA  
RIVER ROCK TAPROOM  
CHEF YU CHINESE  
METRO CITY  
CHOCOLATIER DESIREE  
RAMEN SEAS  
TAO TAO CHINESE  
LILY'S MAC'S  
THE OXFORD

VINO VINO  
POKI BOWL  
DISH DASH  
BEAN SCENE CAFE  
GUMBA'S ITALIAN  
BELLA ROMA  
SIAM TASTE THAI  
ROBERTO'S CANTINA  
IL POSTALE  
COFFEE & MORE

  
Sunnyvale  
Caltrain Station

PHILZ COFFEE  
VITALITY BOWL  
THE DON'S DELI  
SAJJ MEDITERRANEAN

ORANGETHEORY FITNESS  
STARBUCKS  
NOM BURBER  
TAPT  
THE PROLIFIC OVEN  
CITY PLACE WINE BAR  
BEACH HUT DELI





Artistic rendering subject to change.

#### OWNED AND MANAGED BY



**TODD HEDRICK**  
REGIONAL VICE PRESIDENT  
thedrick@irvinecompany.com  
CA Lic. 01152266  
408.330.0126

#### FOR LEASING



**MARK SCHMIDT**  
SENIOR MANAGING DIRECTOR  
mark.schmidt@cbre.com  
CA Lic. 00872826  
408.453.7440

**WILL SCHMIDT**  
SENIOR VICE PRESIDENT  
will.schmidt@cbre.com  
CA Lic. 01988485  
408.453.7408

©2023 CBRE, Inc. and Irvine Management Company. All rights reserved. This information has been obtained from sources believed reliable, but CBRE and Irvine Management Company make no representation or warranty as to the accuracy or completeness of such data and it should be independently verified by prospective tenants. You should conduct a careful, independent investigation of the property and verify all information. Any reliance on this information is solely at your own risk. All renderings, floor plans, pictures shown are for information and illustration purposes only and are subject to change. Images may not be to scale. May not show final material and finishes. Products, features, and amenities subject to availability. Building certifications do not guarantee prevention of contracting COVID-19 or other communicable diseases. CBRE and the CBRE logo are service marks of CBRE, Inc. All other marks displayed on this document are the property of their respective owners, and the use of such logos does not imply any affiliation with or endorsement of CBRE. Photos herein are the property of their respective owners. Use of these images without the express written consent of the owner is prohibited. The Sunwave and Irvine Company are registered trademarks of Irvine Management Company. All properties are offered for lease through Irvine Management Company, a licensed real estate broker DRE LIC. #02041810.