

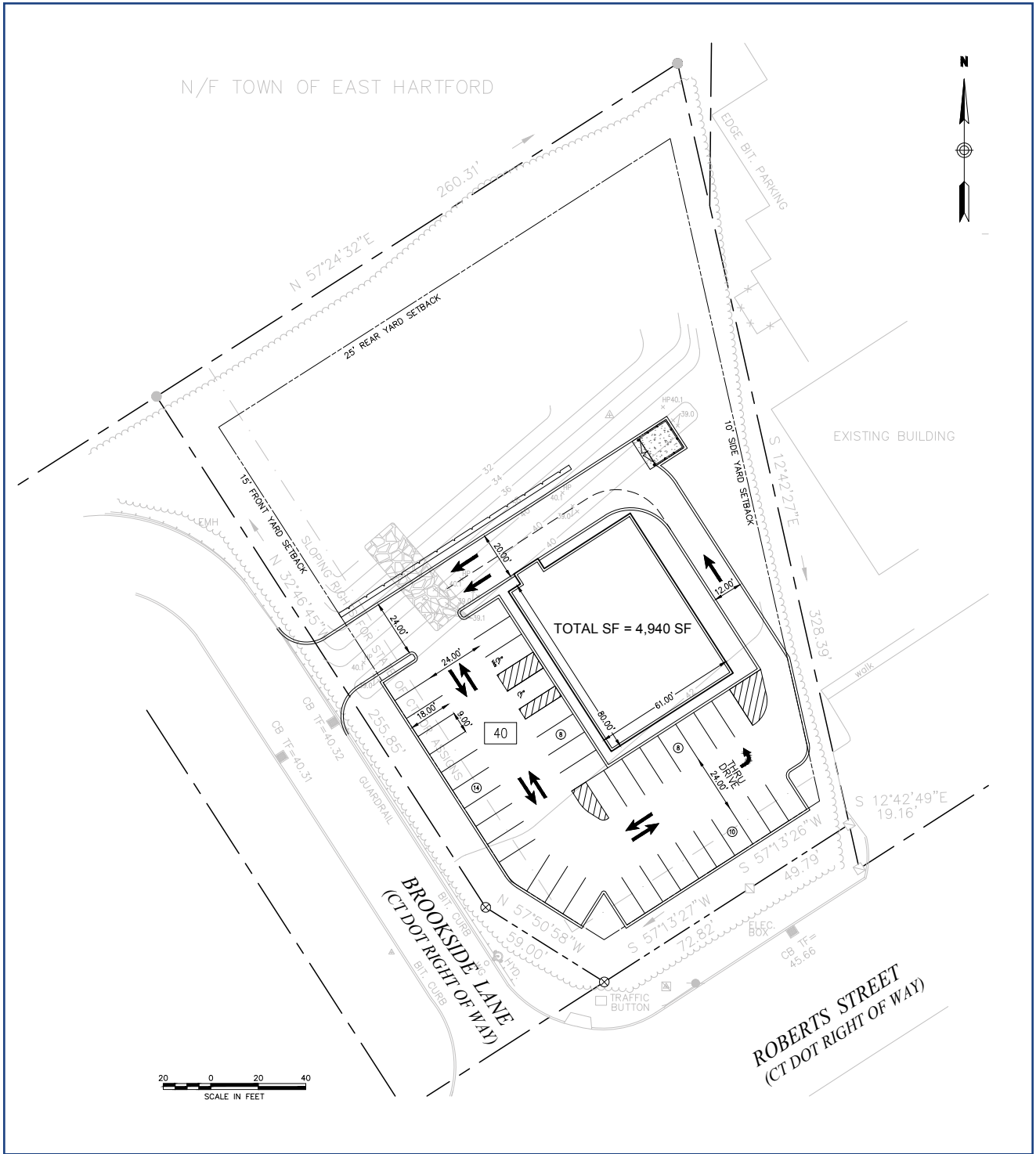
EAST HARTFORD, CONNECTICUT 400 ROBERTS STREET



DEVELOPMENT OPPORTUNITY
FOR LEASE

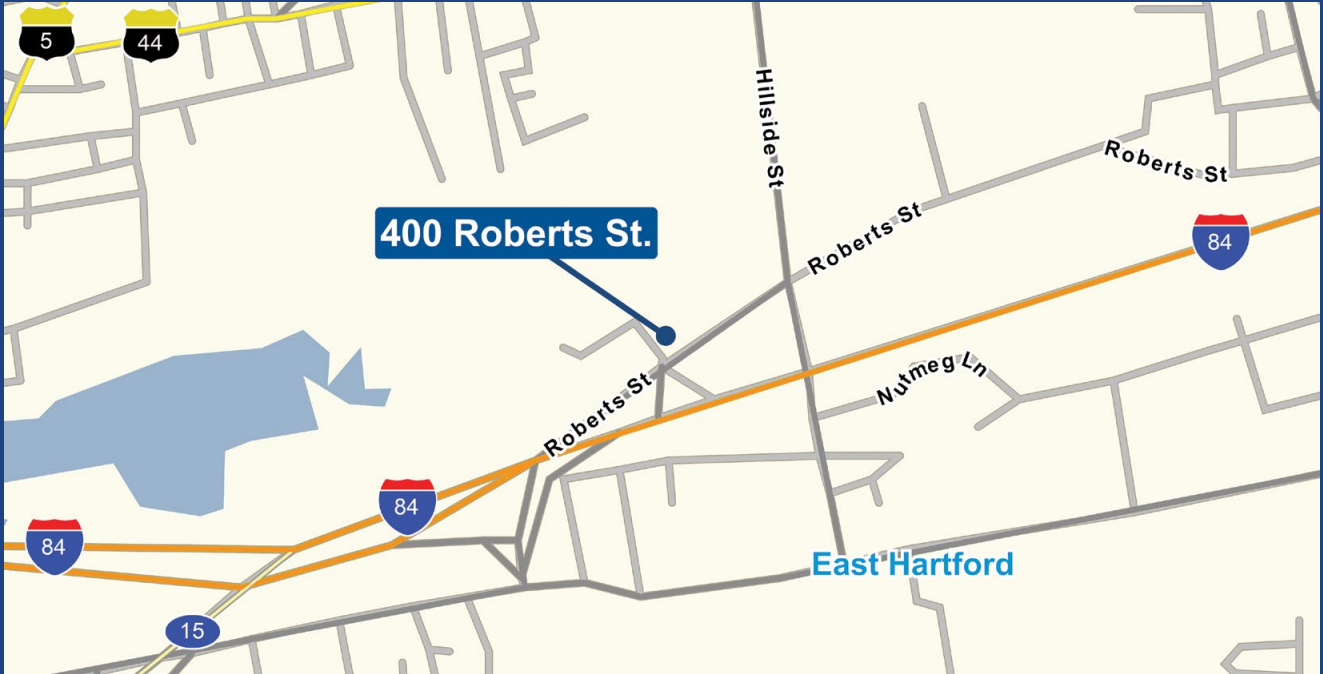
This site is 1.41 Acre situated 100 Yards off I-84 (Exit 58) in East Hartford. The property is surrounded by many commercial businesses such as Ramada, Comfort Inn & Suites, Burger King and Stop & Shop. In close proximity to Rentschler Field (Home of University of Connecticut football) and Cabela's. The average daily traffic on Roberts Street is 21,000 and a prime location for all types of commercial establishments.





400 Roberts Street - Site-plan

| Demographics | 1 Mile | 3 Miles | 5 Miles | 7 Miles |
|----------------------------|----------|----------|----------|----------|
| Population: | 10,891 | 66,382 | 240,282 | 386,546 |
| Households: | 4,308 | 26,162 | 93,260 | 152,081 |
| Avg. HH Income: | \$58,336 | \$56,784 | \$57,688 | \$71,453 |
| Daytime Population: | 12,481 | 98,353 | 263,847 | 387,134 |



HAYES DEVELOPERS

1471 PLEASANT VALLEY ROAD, MANCHESTER, CT 06042

(860) 646-0131 • WWW.HAYESDEVELOPERS.COM

© 2016 Hayes Developers. The information above has been obtained from sources believed reliable. While we do not doubt its accuracy, we have not verified it and make no guarantee, warranty or representation about it. It is your responsibility to independently confirm its accuracy and completeness. Any projections, opinions, assumptions or estimates used are for example only and do not represent the current or future performance of the property. The value of this transaction to you depends on tax and other factors which should be evaluated by your tax, financial and legal advisors. You and your advisors should conduct a careful, independent investigation of the property to determine to your satisfaction the suitability of the property for your needs.

Hayes Developers logo are service marks of Hayes Developers and/or its affiliated or related companies in the United States and other countries. All other marks displayed on this document are the property of their respective owners.