

357 REGENCY RIDGE DRIVE
WASHINGTON TOWNSHIP, OH 45459



FIRST FLOOR OFFICE SUITE



Corporate Ridge Office Condo

PROPERTY SUMMARY

Suite Size:	2,274 Sq Ft	Municipality:	Washington Township
Lot Size:	.83 Acres	County:	Montgomery
Sale Price:	\$275,000	Zoning:	Office

PROPERTY HIGHLIGHTS

- Professional Office condo conveniently located on Regency Ridge Dr, near the intersection with Corporate Way
- Minutes from Route 48, Alex Bell, Far Hills and I-675
- Easily accessible first floor space, well-suited for office / medical office use
- Many top restaurants, banking, shopping, hospitals and hotels nearby
- Located in Washington Township, no city tax!

PRESENTED BY: **ASHLEY SCHNEIDER**
Director of Sales & Leasing, REALTOR®
Direct: 312/343-1316
Email: Ashley@cra-dayton.com

CRA-DAYTON.COM
7071 Corporate Way, Suite 200 | Centerville, OH 45459
Office: 937/433-9000

357 REGENCY RIDGE DRIVE, WASHINGTON TOWNSHIP, OHIO 45459

PROPERTY PHOTOS

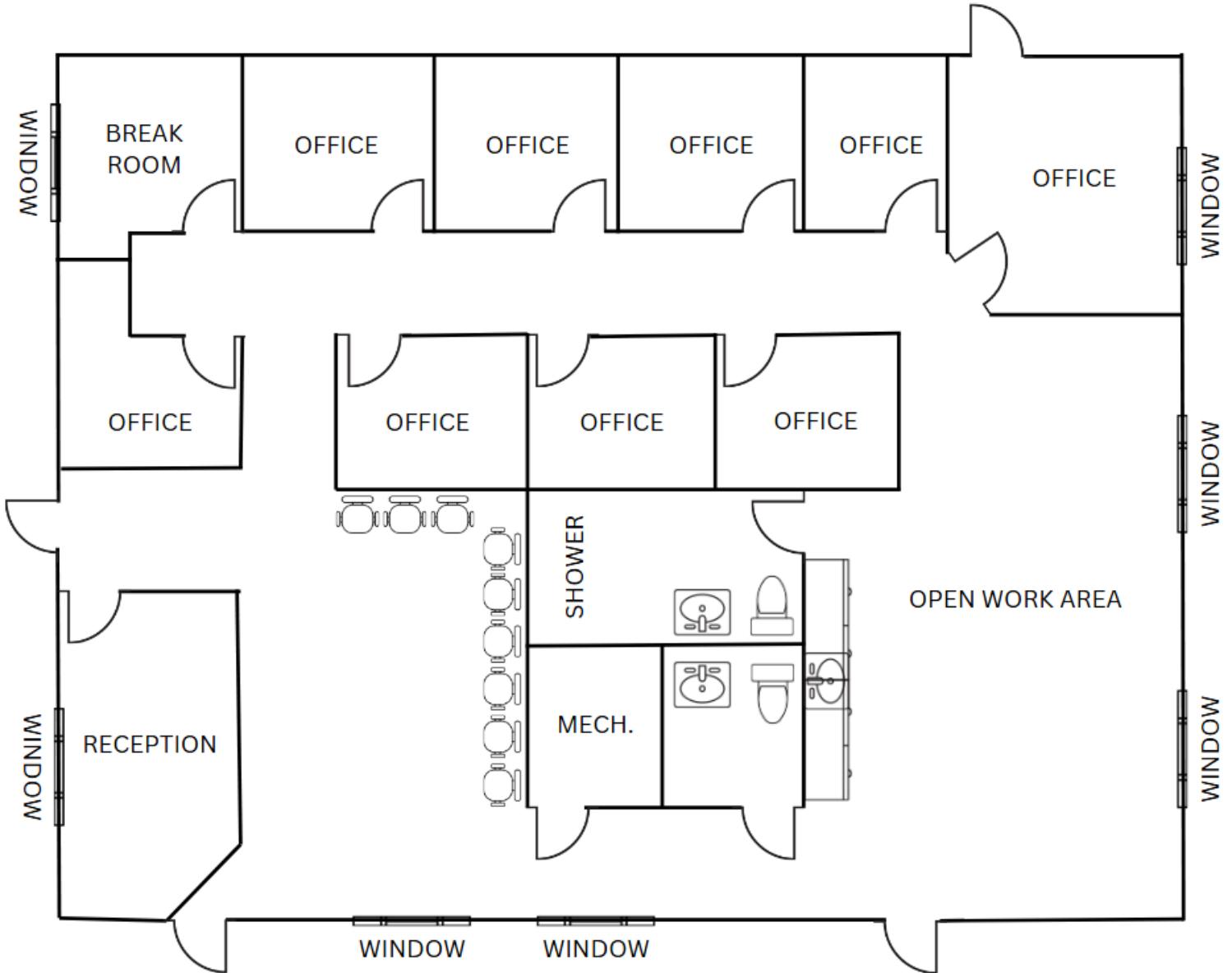


PRESENTED BY: **ASHLEY SCHNEIDER**
Director of Sales & Leasing, REALTOR®
Direct: 312/343-1316
Email: Ashley@cra-dayton.com

CRA-DAYTON.COM
7071 Corporate Way, Suite 200 | Centerville, OH 45459
Office: 937/433-9000

357 REGENCY RIDGE DRIVE, WASHINGTON TOWNSHIP, OHIO 45459

FLOOR PLAN



PRESENTED BY: **ASHLEY SCHNEIDER**
Director of Sales & Leasing, REALTOR®
Direct: 312/343-1316
Email: Ashley@cra-dayton.com

CRA-DAYTON.COM
7071 Corporate Way, Suite 200 | Centerville, OH 45459
Office: 937/433-9000