



MOVE-IN READY FOR LEASE – OFFICE SUITES

2366-2368 South Uecker Lane
Lewisville, TX

LOCATION

This single-story building is located in the Mira Vista professional office park off FM 3040 (East Round Grove Road) between Business Highway 121 and Rockbrook Drive. The location is ideal for professional office tenants such as accountants, financial advisors or technology companies.

SIZE

2366 S Uecker Lane

- Suite 100 – 1,200 RSF

2368 S Uecker Lane

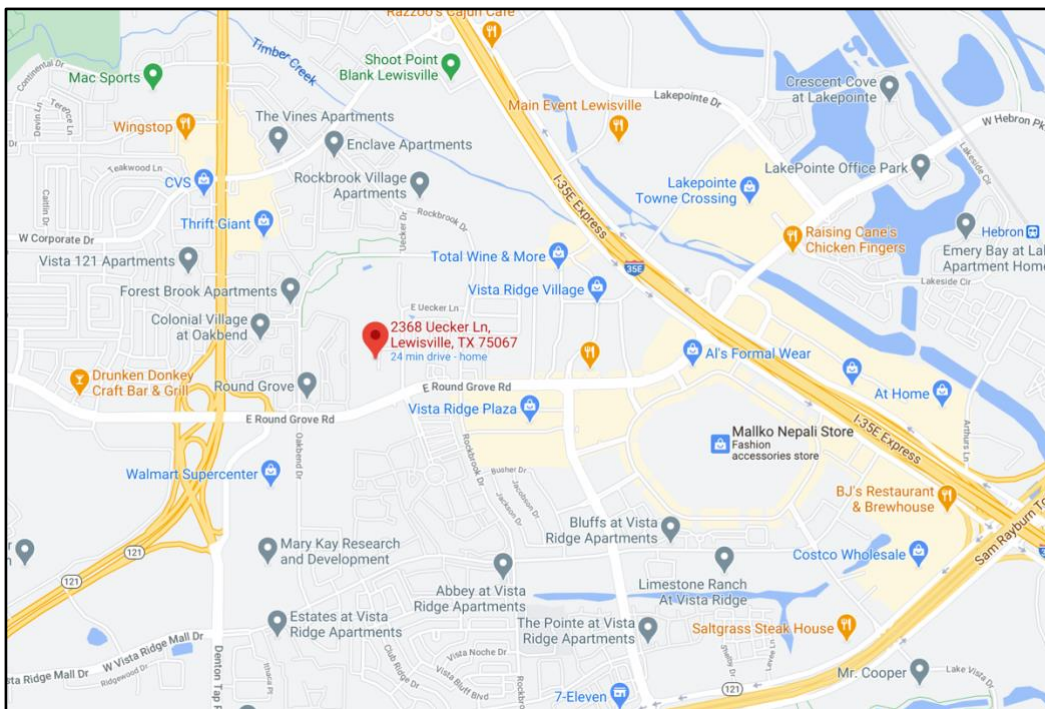
- Fully Leased

LEASE RATE

- Competitive Rates – See broker for pricing

HIGHLIGHTS

- The location has easy access to FM 3040 and all nearby retail offerings
- Private Entrances
- Private Restrooms



FOR INFORMATION:

Phyllis Garcia: Phyllis@BridgeRealtyTexas.com

Diana Pergande: Diana@BridgeRealtyTexas.com

www.BridgeRealtyTexas.com | 972.899.1851

400 Parker Square, Suite 270H | Flower Mound, TX 75028

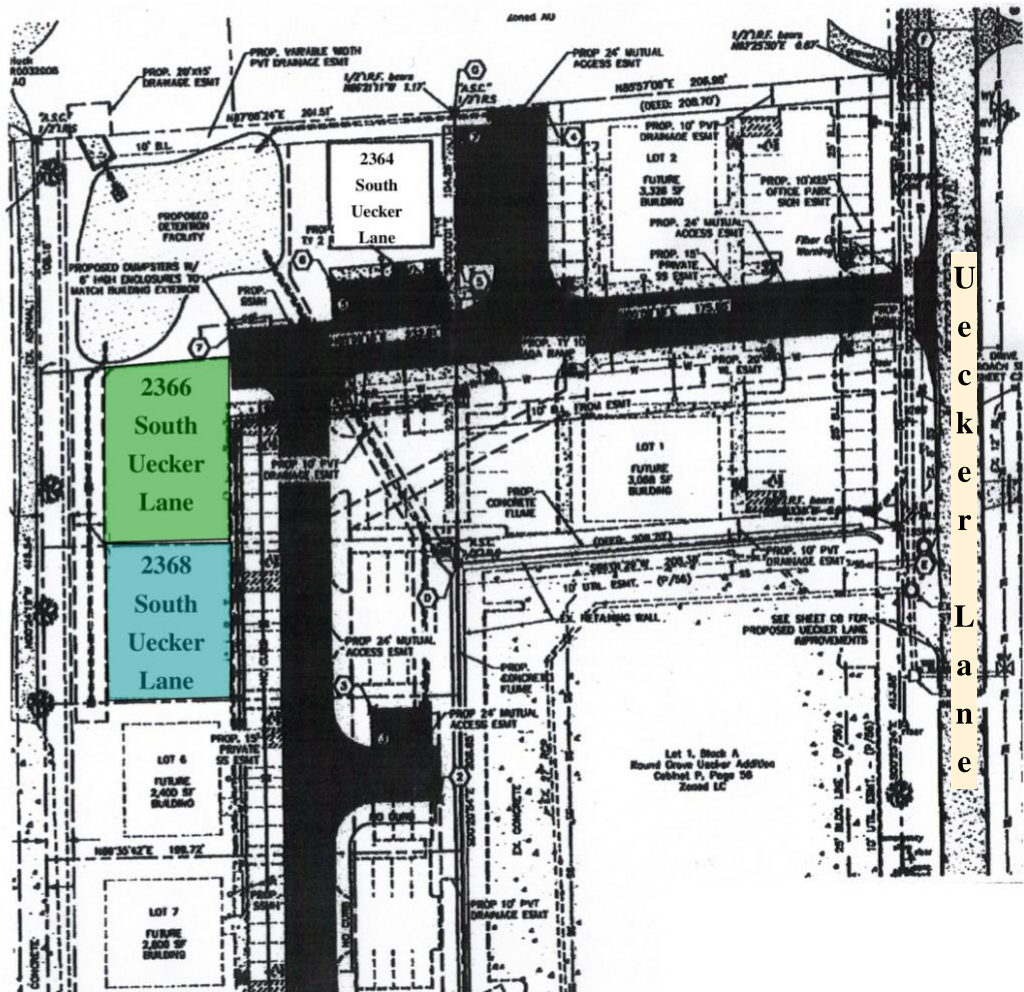
This information is believed to be accurate, but no representation or warranty, express or implied, as to its accuracy or completeness is made by any party. The presentation of this property is submitted subject to errors, omissions, change of price or prior sale or lease, or withdrawal without notice.

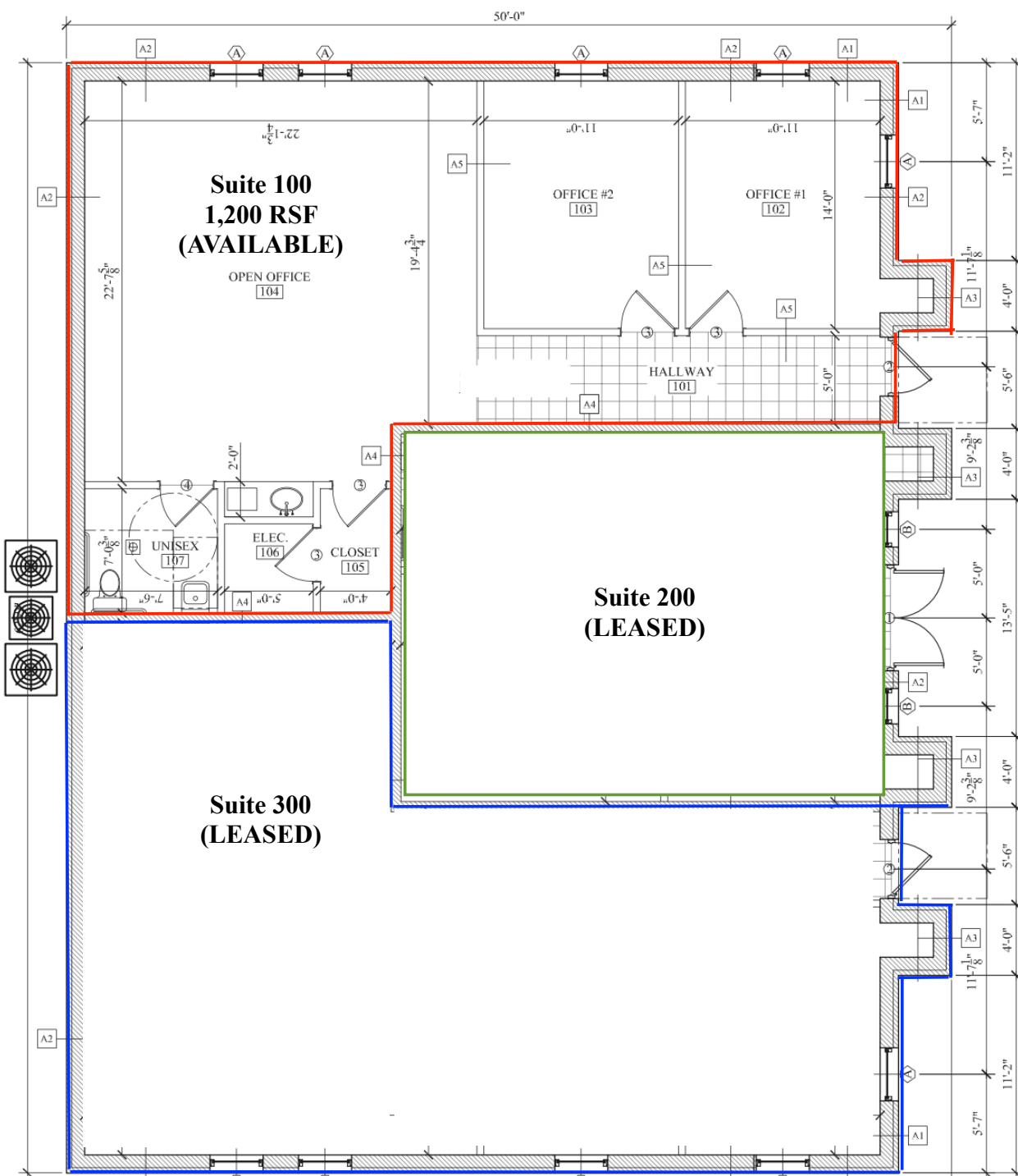


BUILDING SITE

2366 - 2368 South Uecker Lane
Lewisville, TX

2366 - 2368 South Uecker Lane
Lewisville TX





PHOTOS

2366-2368 South Uecker Lane
Lewisville, TX

