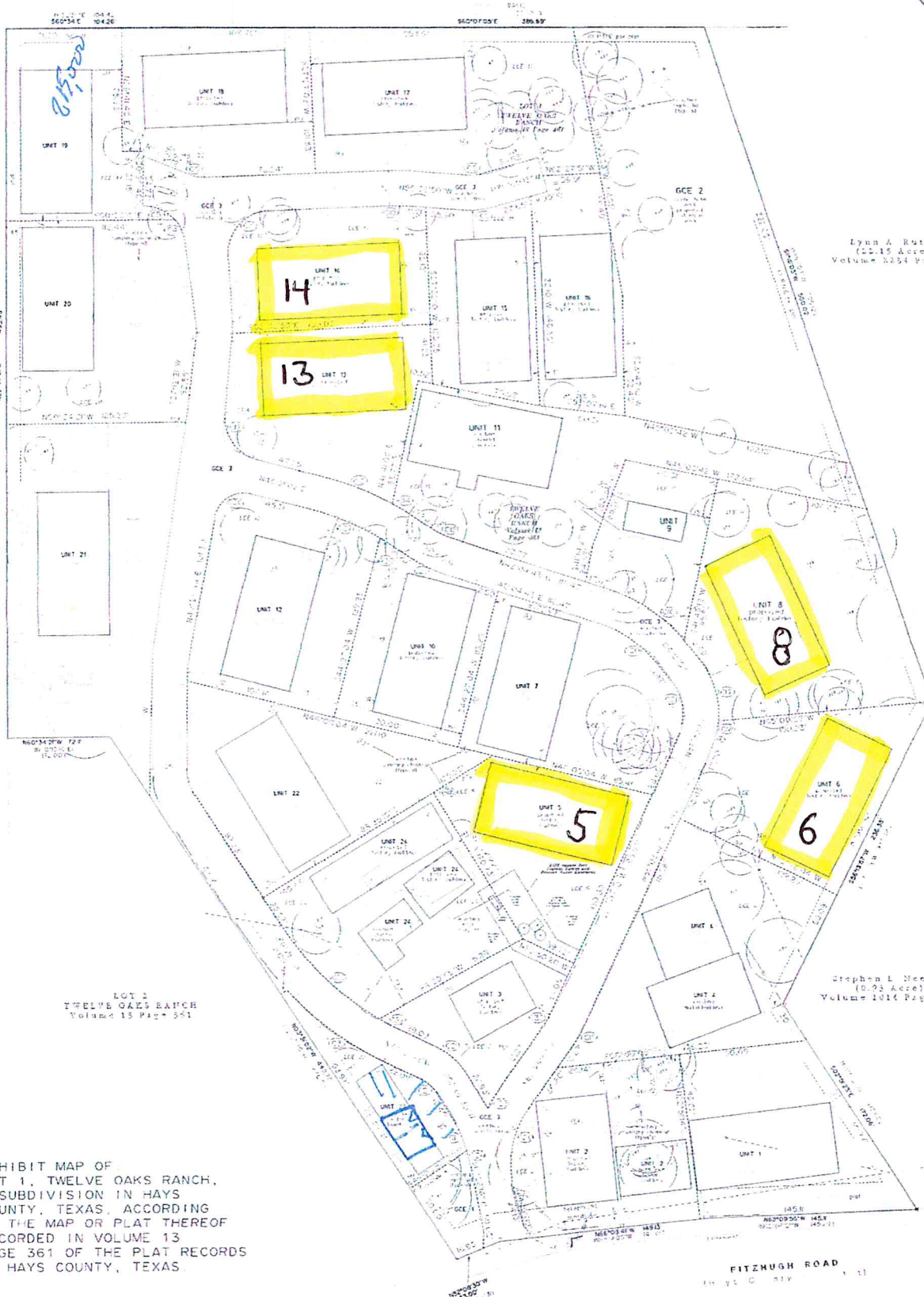


Robert Atlee Ayres and
Vera Patricia Ayres Bowen
(6,501.97 Acres)
Volume 11264 Page 48



Lynn A Rutter
(22.15 Acres)
Volume 2254 Page 17

Fitzhugh E. Pitt E. Ayres
Remainder tract
Volume 541 Page 587

LOT 1
TWELVE OAKS RANCH
Volume 13 Page 361

Stephen L. Neely
(0.93 Acres)
Volume 1014 Page 195

EXHIBIT MAP OF
LOT 1, TWELVE OAKS RANCH,
A SUBDIVISION IN HAYS
COUNTY, TEXAS, ACCORDING
TO THE MAP OR PLAT THEREOF
RECORDED IN VOLUME 13
PAGE 361 OF THE PLAT RECORDS
OF HAYS COUNTY, TEXAS.

FITZHUGH ROAD
IN Y. C. CITY