

INDUSTRIAL PARK LAUDERHILL

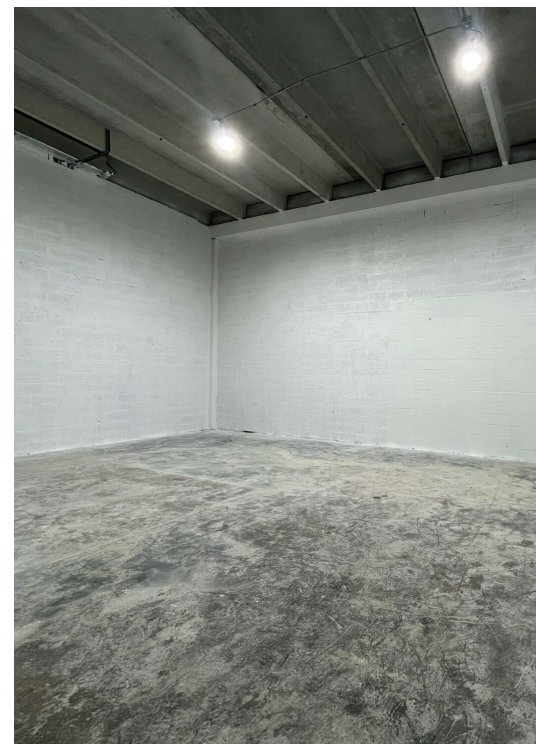
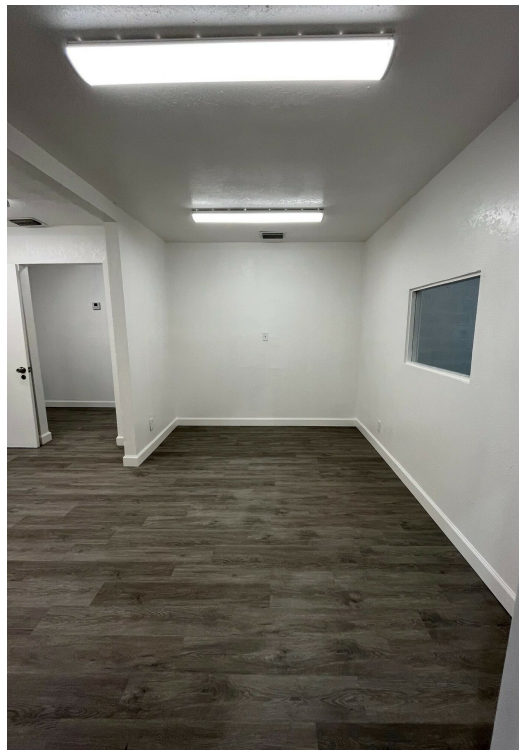
3700-3798 NW 16TH STREET, LAUDERHILL, FL 33311

3790 NW 16TH STREET



SPACE HIGHLIGHTS

- 1,530 SF newly renovated small bay warehouse
- Front grade level 12' x 14' overhead door
- 18' clear ceiling height
- 3 phase electric
- LED lighting and hurricane impact doors
- 2 air conditioned offices (426 SF)
- Frontage on 38th Street
- \$22 base rent PSF/Yr.



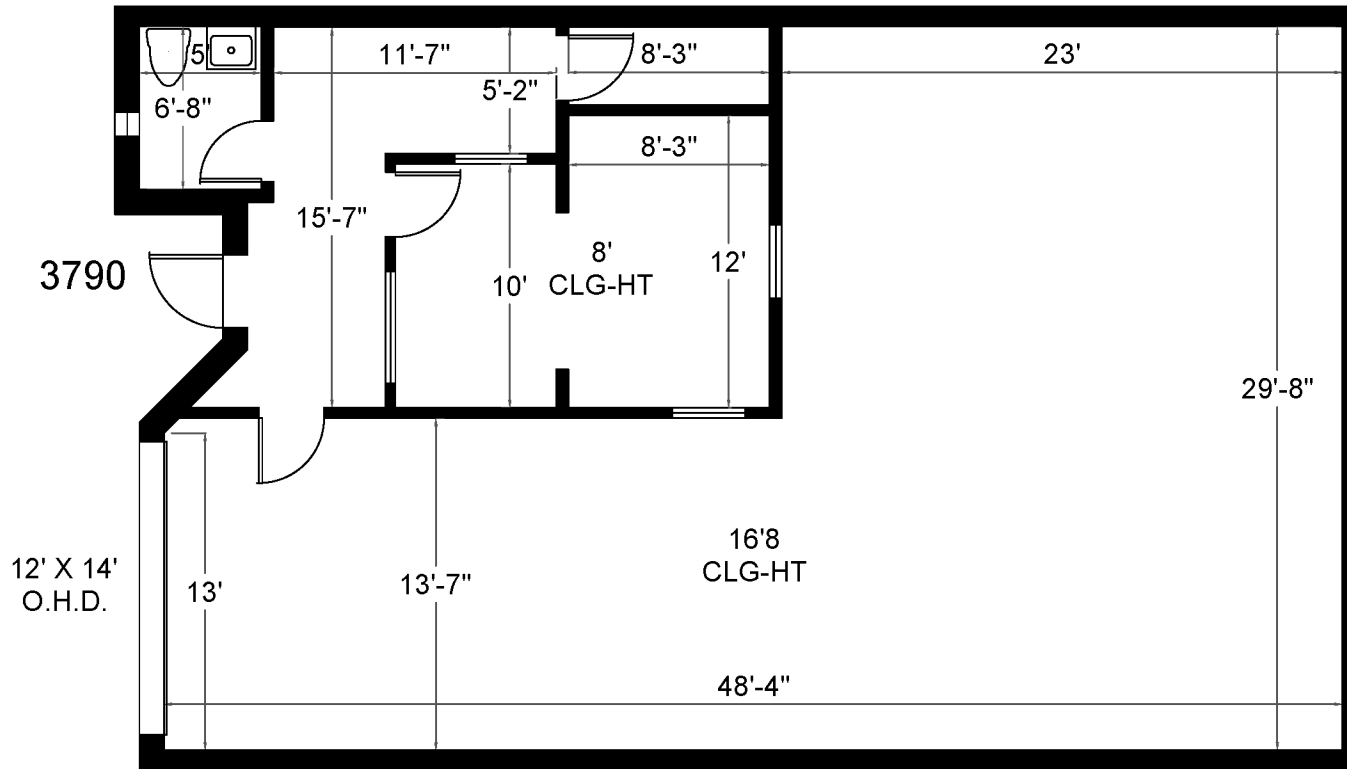
ANGIE WEAVER

Lauderdale Lakes and Lauderhill Manager
 Direct: 954.485.9200 | Cell: 917.645.2339
 angie@levyrai.com



LAUDERHILL INDUSTRIAL PARK

3790 NW 16th Street | Lauderhill, FL 33311



Office - 426 SQ.FT.
Warehouse - 1,104 SQ.FT.



Angie Weaver | Broker / Property Manager | 917.645.2339 | Angie@levyrai.com
4901 NW 17th Way, Suite 103 | Ft. Lauderdale, FL 33309

1,530 Rentable SQ. FT.
www.LevyRealtyAdvisors.com