

CHELSEA OFFICE CONDOMINIUM
FOR SALE



520 WEST 27TH STREET

BETWEEN TENTH AND ELEVENTH AVENUES
NEW YORK, NY

CHELSEA OFFICE CONDOMINIUM
FOR SALE



520 WEST 27TH STREET

BETWEEN TENTH AND ELEVENTH AVENUES
NEW YORK, NY

Available:	Unit 403
Size:	3,073 RSF
Asking Price:	\$2,300,000 (\$748/RSF)
Annual Common Charges:	\$22,412 (\$7.29/RSF)
Annual Real Estate Taxes:	\$22,248 (\$7.24/RSF)

Overview:

Unique opportunity to purchase a 3,073 RSF office condominium in Chelsea. Located in Manhattan's art and gallery epicenter, 520 West 27th Street is an 11 story, 92,000 square foot office condominium building that was built in 2008.

The office unit has a beautiful, recently renovated and professionally designed layout with high ceilings and floor-to-ceiling windows overlooking the Zaha Hadid Building, Hudson Yards and the High Line. Next door, the Selina Chelsea Hotel has a restaurant and rooftop bar with panoramic views of the NYC skyline.

Chelsea is Manhattan's trendy and sought-after neighborhood packed with architectural and art delights, including the High Line, Hudson Yards, Chelsea Market, and the iconic Madison Square Garden, 520 West 27th Street sits in a prime position in this dynamic district.

Unit Highlights:

- Extremely high-end installation with glass conference room and bullpen seating
- Private bathroom with a shower and pantry
- Floor-to-ceiling windows flood the space with natural light
- Dramatic southern views overlooking the High-Line and the Hudson Yards
- Large common outdoor terrace on the 5th floor

Michael Rudder

Office: (212) 966-3611
Mobile: (646) 483-2203
mrudder@rudderpg.com

Justin Harris

Office: (212) 966-5638
Mobile: (914) 582-9227
jharris@rudderpg.com

Rudder Property Group

36 West 44th Street, Suite 1411
New York, NY 10036
www.rudderpg.com





High-end installation with large conference room



Open bullpen seating with large windows overlooking
The Zaha Hadid Building and The High Line



Kitchen



Reception



Dramatic northern views overlooking
The High Line and Hudson Yards



520 West 27th Street entrance

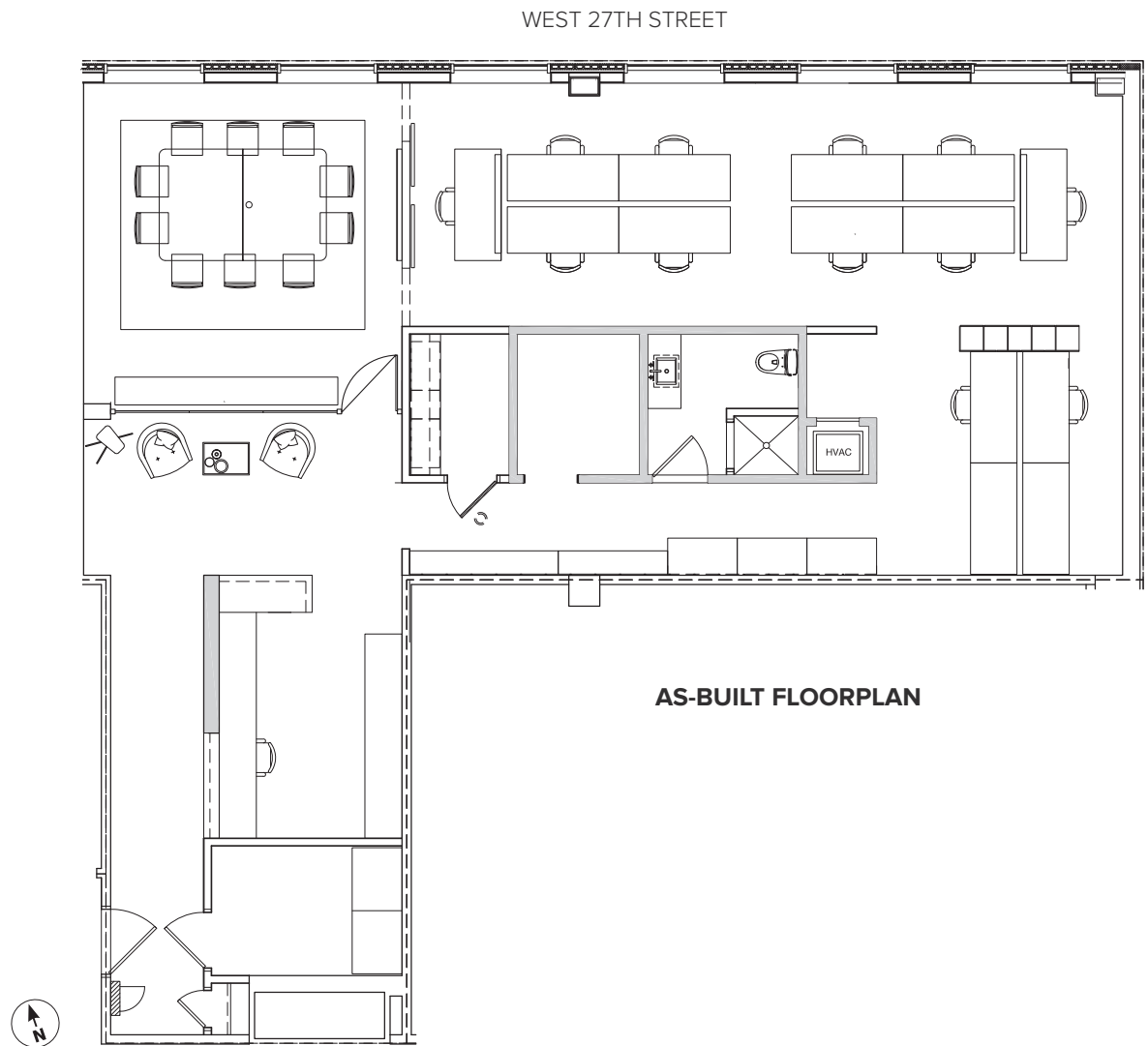


The High Line



520 WEST 27TH STREET

Available: Unit 403
Size: 3,073 RSF
Asking Price: \$2,300,000 (\$748/RSF)
Annual Common Charges: \$22,412 (\$7.29/RSF)
Annual Real Estate Taxes: \$22,248 (\$7.24/RSF)



Michael Rudder
Office: (212) 966-3611
Mobile: (646) 483-2203
mrudder@rudderpg.com

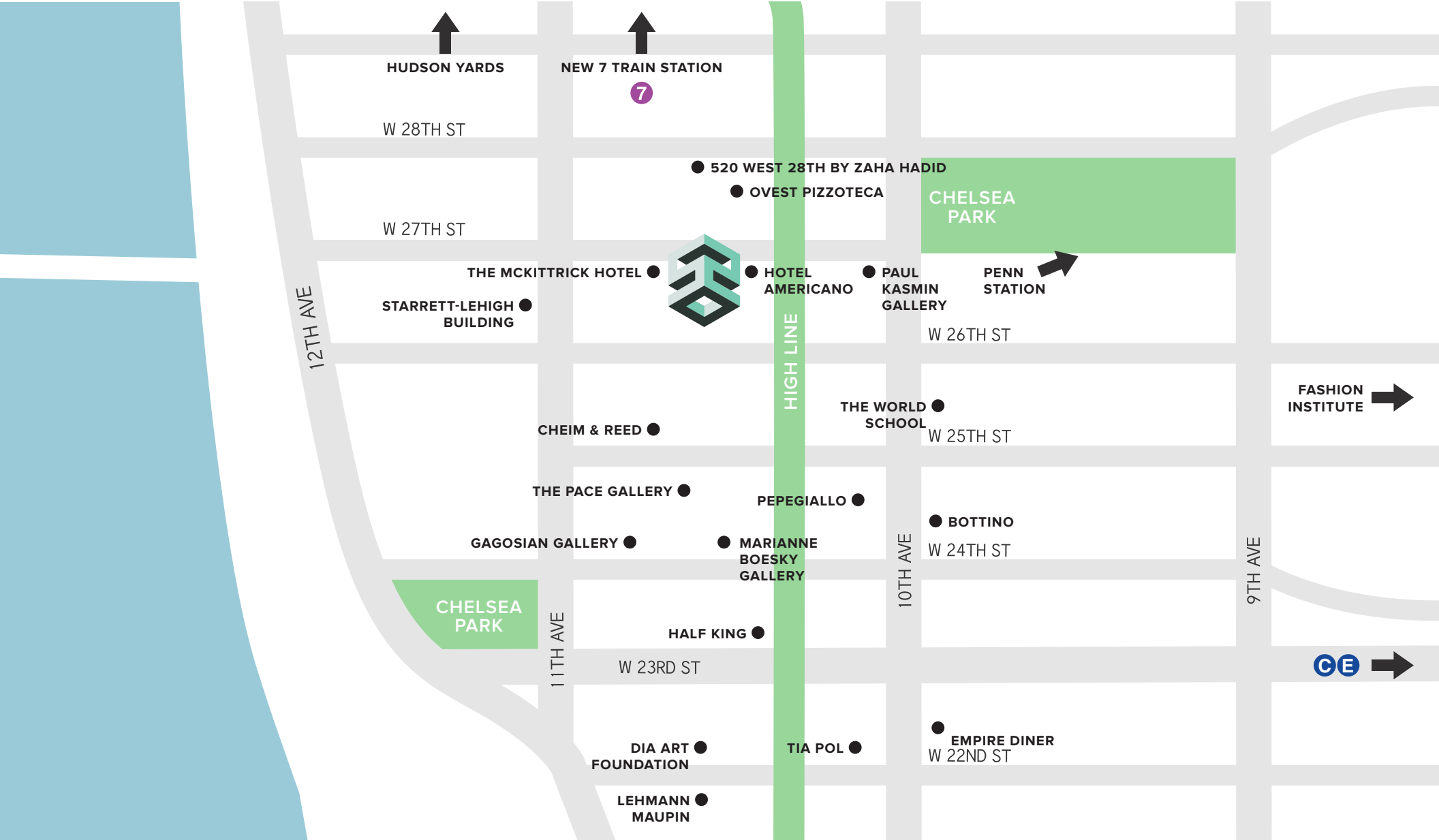
Justin Harris
Office: (212) 966-5638
Mobile: (914) 582-9227
jharris@rudderpg.com

Rudder Property Group
36 West 44th Street, Suite 1411
New York, NY 10036
www.rudderpg.com



[RUDDERPG.COM/520W27](https://rudderpg.com/520W27)

All information supplied is from sources deemed reliable and is furnished subject to errors, omissions, modifications, removal of the listing from sale, and to any listing conditions, including the prices. Floor plan represents only an approximation of the size and perimeter of the Unit(s). Details, including but not limited to, partitions and furniture shown hereon, are for demonstration purposes only and do not reflect existing conditions, which likely vary from the conditions shown hereon. Any square footage dimensions set forth are estimates based on approximate rentable measurements.



Michael Rudder
Office: (212) 966-3611
Mobile: (646) 483-2203
mrudder@rudderpg.com

Justin Harris
Office: (212) 966-5638
Mobile: (914) 582-9227
jharris@rudderpg.com

Rudder Property Group
36 West 44th Street, Suite 1411
New York, NY 10036
www.rudderpg.com



[RUDDERPG.COM/520W27](https://rudderpg.com/520W27)

All information supplied is from sources deemed reliable and is furnished subject to errors, omissions, modifications, removal of the listing from sale, and to any listing conditions, including the prices. Floor plan represents only an approximation of the size and perimeter of the Unit(s). Details, including but not limited to, partitions and furniture shown hereon, are for demonstration purposes only and do not reflect existing conditions, which likely vary from the conditions shown hereon. Any square footage dimensions set forth are estimates based on approximate rentable measurements.