

# 145 TREMONT STREET






 Boston Realty Advisors

Retail Space for Lease — 2,916 SF  
+91-1,121 SF of Basement Space



## CENTRALIZED LOCATION

From 145 Tremont

- Park Street  <0.1 miles
- DTX  0.1 miles
- State Street  0.2 miles
- Gov't Center  0.5 miles
- South Station  0.7 miles


## BEACON HILL


## 145 TREMONT STREET




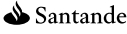
  
**GRECO**  
TRULY GREEK

  
OGAWA COFFEE

  
**Boston Chops**

  
**Capital One**

  
**TD Bank**

  
**Santander**

  
**CVS pharmacy**

  
**Planet Fitness**

  
**GAP**

  
**ORPHEUM THEATRE**

  
**KAVES COFFEE**

  
**AT&T**

  
**DSW**  
DESIGNER SHOE WAREHOUSE

  
**SIDE BAR**  
DOWNTOWN CROSSING - BOSTON

  
**macy's**

  
**STARBUCKS**

  
**PRIMARK**

  
**Roche Bros.**

## FINANCIAL DISTRICT

  
**BOSTON COFFEE CO.**

  
**Salvatore's**

  
**BACK DECK**

  
**SIP**  
WINE BAR + KITCHEN

  
**George Howell COFFEE**

  
**THE GODFREY**  
HOTEL BOSTON

  
**sweetgreen**

  
**clover**

  
**FIVE GUYS**  
BURGERS and FRIES

  
**ThinkingCup**

  
**AMC THEATRES**

  
**HYATT REGENCY**

  
**drybar**

## BACK BAY

  
**BISTR du Midi**

  
**ANNE FONTAINE**

  
**HERMES PARIS**

  
**ST. JOHN**

  
**LAPERLA**

  
**exhale**  
MAGNOLIA

  
**FOUR SEASONS**  
Hotels and Resorts

  
**Bristol**  
RESTAURANT AND BAR

  
**CVS pharmacy**

  
**AVERY BAR**

  
**EXPLORATEUR**

  
**EQUINOX**

  
**LEGAL SEA FOODS MAIL ORDER**

  
**CAFFÈ NERO**

  
**Walgreens**

  
**CVS pharmacy**

  
**W BOSTON**


  
**WILBUR THEATRE**


  
**LEGAL SEA FOODS MAIL ORDER**

  
**OSTRA**

  
**MAGGIANO'S**  
LITTLE ITALY

  
**REVERE**  
HOTEL | BOSTON COMMON

  
**The BOSTON PARK PLAZA HOTEL & TOWERS**

  
**STRIP au bon pain**  
STARBUCKS

  
**citi PERFORMING ARTS CENTER**

## DEMOGRAPHICS DATA

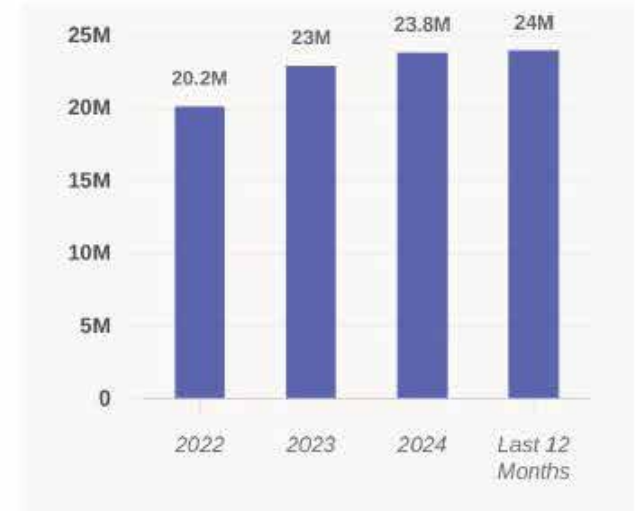
	0.5 Miles	1 Mile	1.5 Miles
Total Households	11,227	39,336	67,959
Total Population	24,040	74,462	131,195
Average Household Income	\$199,058	191,828	\$182,698
Average Age	38	40	39

# PROPERTY OVERVIEW

145 Tremont Street offers a prime retail leasing opportunity located in the 24/7 Park Street/Downtown Crossing neighborhood. This heavily populated area offers a unique blend of local, national, and international brands of food, fitness fashion and entertainment. Located directly across the street from the Boston Common and adjacent to Park Street, of of the most populated train lines. 145 Tremont offers 2,916 SF on the street with additional SF in the basement for storage opportunities to rent as well.

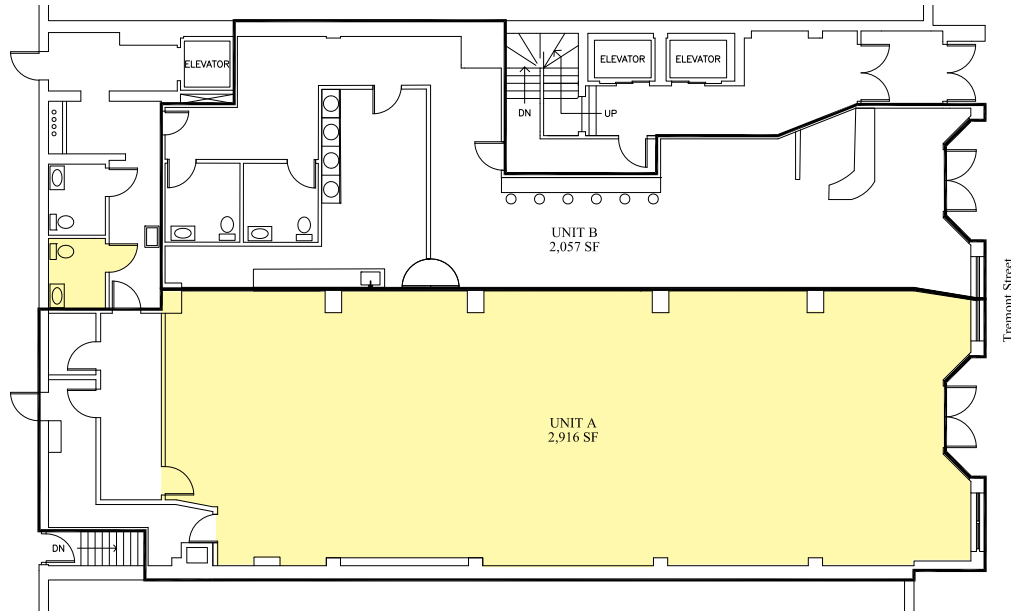
## Total DBA Area Visitation March 2025

\*Data provided by DBA



# FLOOR PLAN

## 2,916 SF



### WHITNEY GALLIVAN

*Managing Director & Partner*  
617.850.9612  
wgallivan@bradvisors.com

### JOE WAGNER

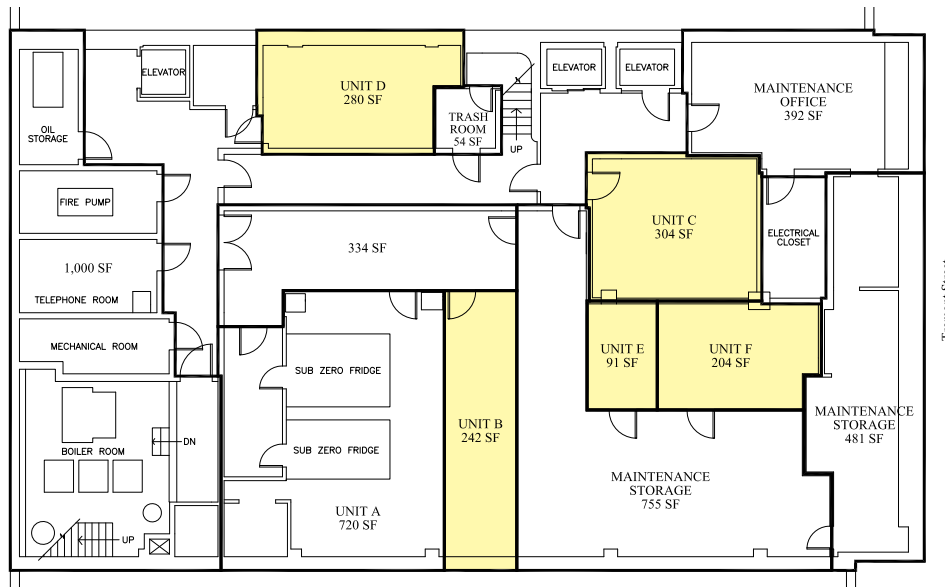
*Managing Director*  
617.850.9675  
jwagner@bradvisors.com

### GUS HOFFMANN

*Senior Associate*  
617.448.5055  
ahoffmann@bradvisors.com

# BASEMENT

## 91-1,121 SF



### LUKE SWEENEY

*Retail Associate*  
401.601.1145  
lsweeney@bradvisors.com



136 Newbury Street | Boston, MA  
617.375.7900 | BRAdvisors.com

© Copyright Boston Realty Advisors. All rights reserved. The information contained here has been obtained through sources deemed reliable but cannot be guaranteed as to its accuracy. Any information of special interest should be obtained through independent verification.