

For Sale

CBRE

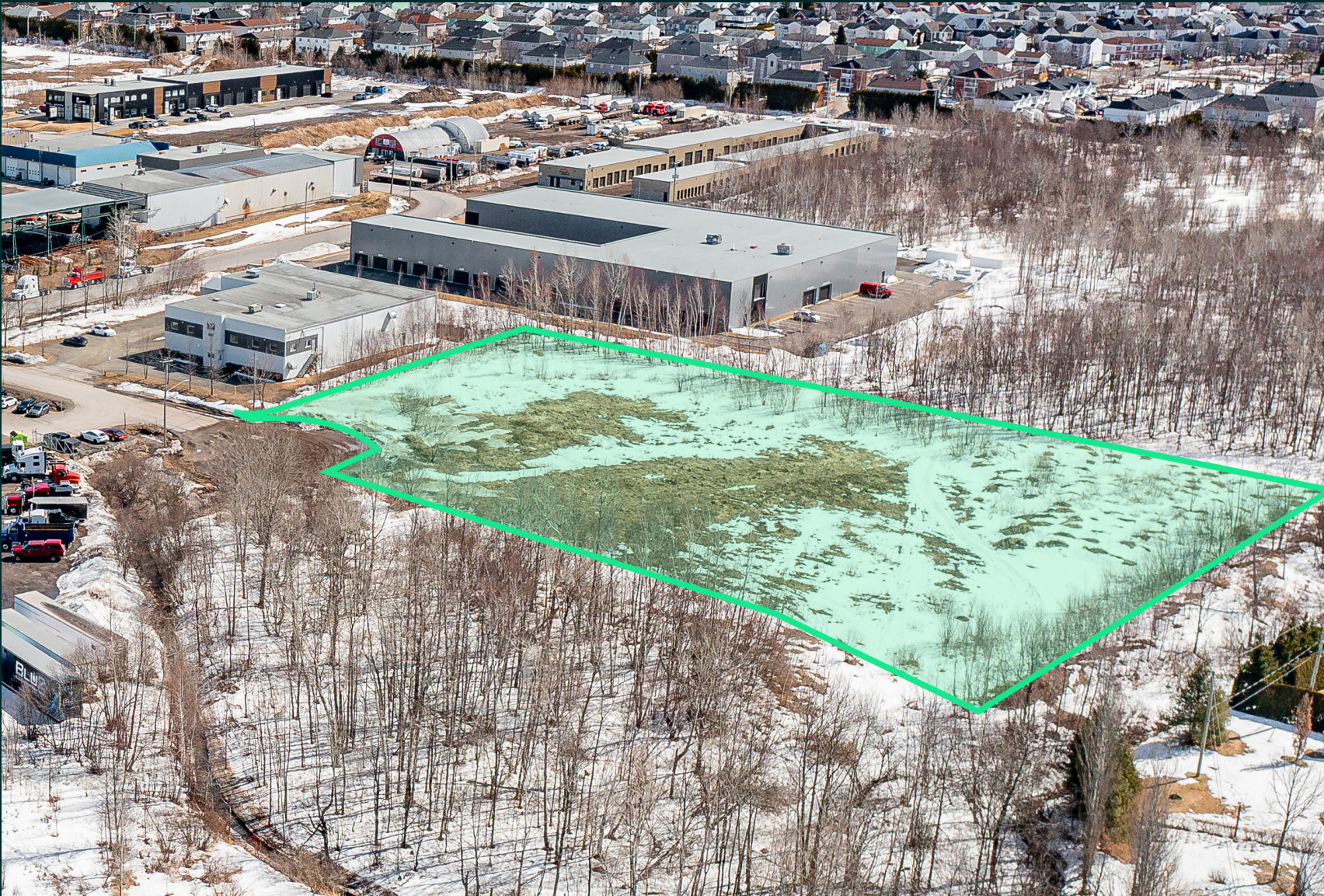
INDUSTRIAL LAND

127,134 sq. ft.

1045 Renault Street, Levis, Quebec



The Land



Zoning

C8 C303 C304 C310 C315 C317 C320 C321 I2

Exceptional land for industrial development of 127,134 sq. ft. located at 1045 Renault Street in Lévis, benefiting from an ideal location just minutes from Highway 20. Close to several services and shops. This development site presents exceptional potential for various projects. Taniata Avenue is well served by the transport network, making it a strategic location for businesses.

Property Overview

Lot #	Land Area
6 571 359	127,134 sq. ft.
Municipal Taxes	School Tax
\$3,751.85	\$185.46

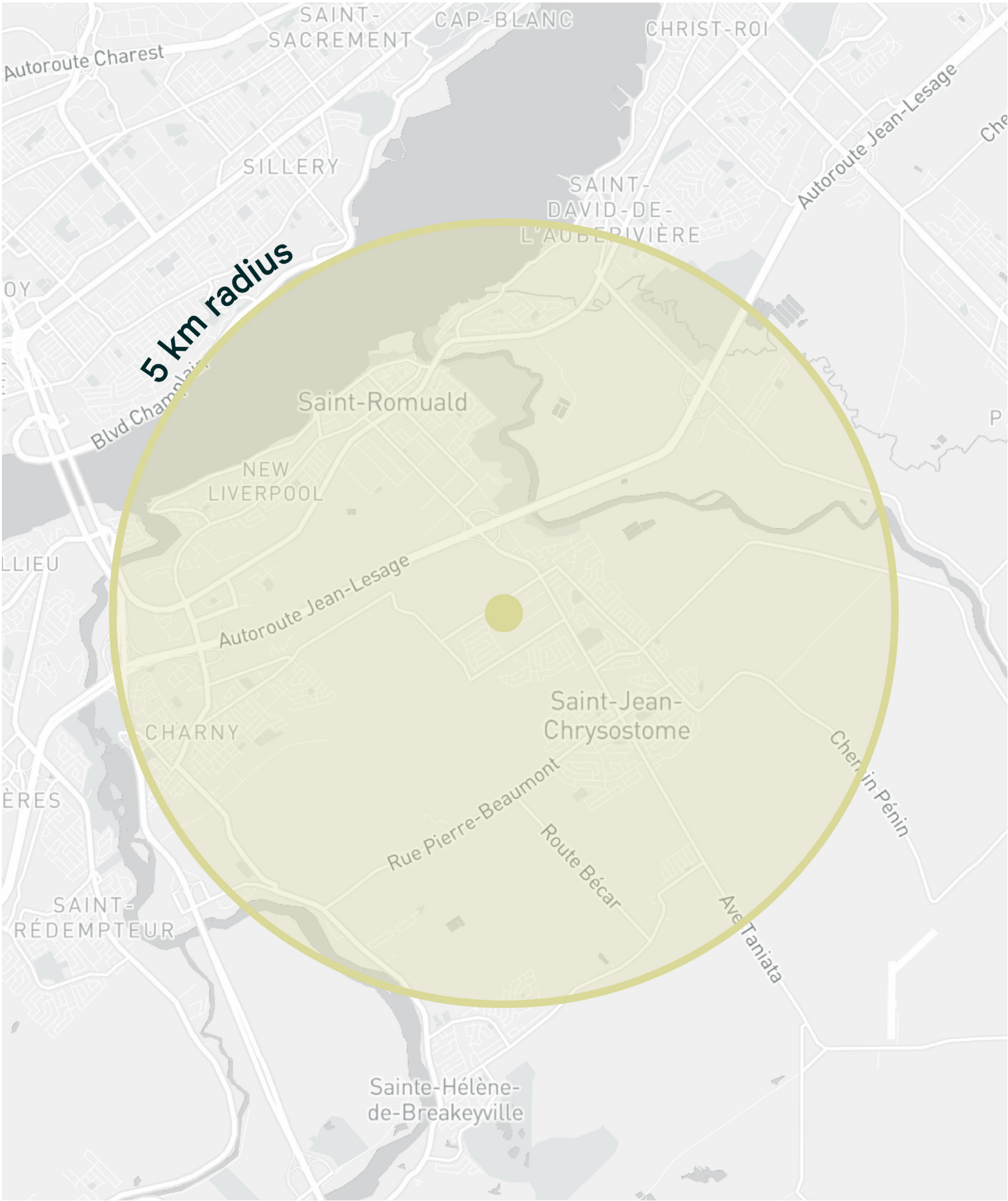
Construction Option	The land is not affected by the construction moratorium.
25,000 to 40,000 sq. ft.	

Property Type Land for developpement	Usage Industrial	Sale Price Upon Request
---	---------------------	----------------------------

Benefits

			
Large potential	Near Highway 20	Saint-Jean Industrial Park	Near multiple services & shops

Demographics



2024 Population



5 km : 94,010
10 km : 365,517

+20-Yr-Old Population



5 km : 76,049
10 km : 296,046

Daytime Population



5 km : 97,178
10 km : 390,372

Average Household Income



5 km : \$116,240
10 km : \$113,884

Average Age



5 km : 45
10 km : 43

Unemployment Rate




5 km : 3.2%
10 km : 3.5%


1045 Renault Street
Levis, Quebec | Saint-Jean Industrial Park

Location


- 1 Jean Coutu Pharmacy
- 2 Super C
- 3 Ballroom Country
- 4 Tim Hortons
- 5 Promenade Saint-Jean
- 6 Objectif Motivation Gym
- 7 SAQ
- 8 Centre de l'Auto St-Jean-Chrysostome
- 9 Champigny Park



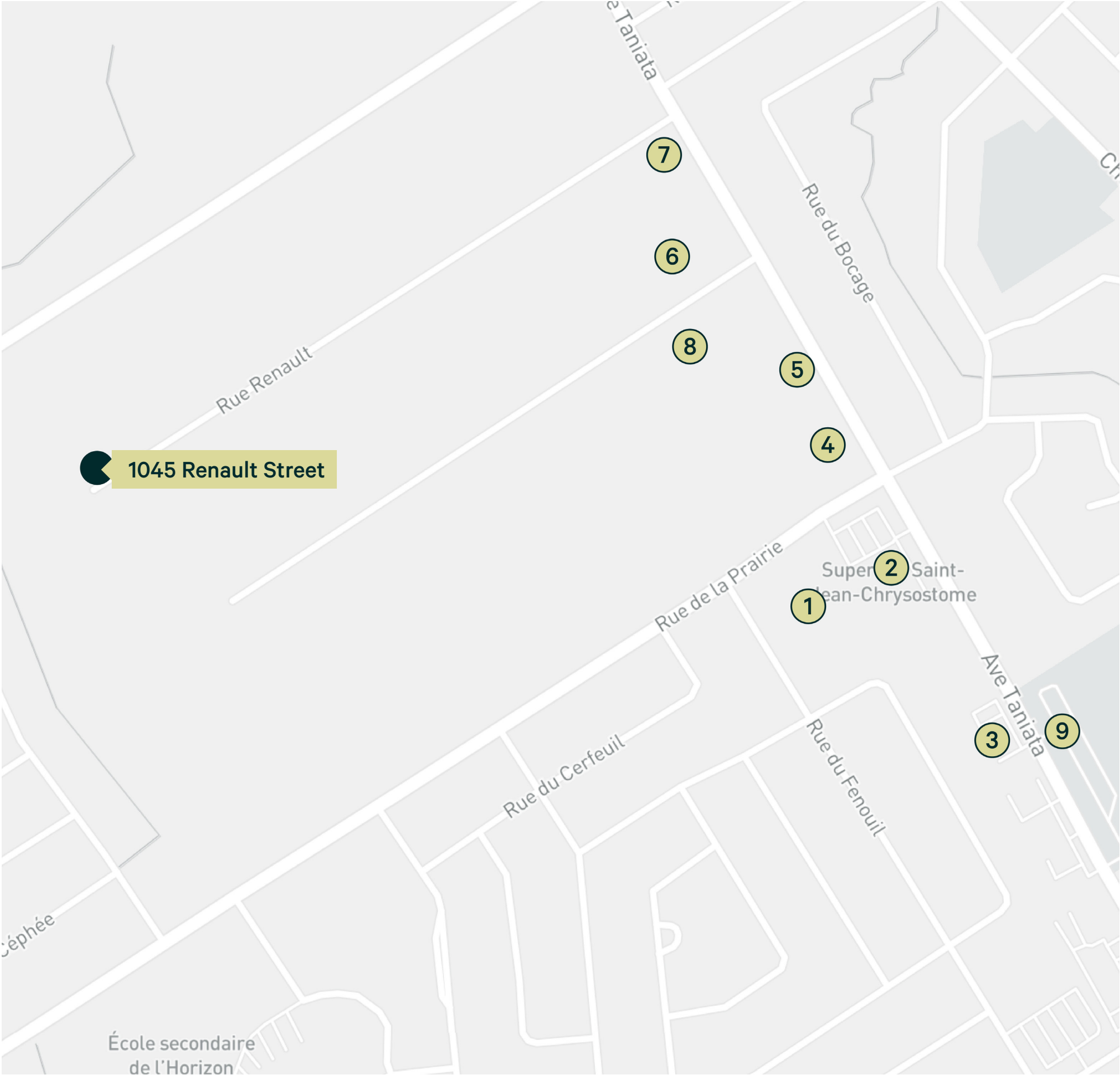
Highway 20
1.6 km | 4 min
Taniata Avenue
650 m | 2 min



Pierre-Laporte Bridge
9.4 km | 9 min
Québec Bridge
9.6 km | 12 min



Jean-Lesage International Airport
19.5 km | 19 min



Contact us for more information

Patrick Soucy, SIOR¹

Executive Vice President
+1 581 999 0120
patrick.soucy@cbre.com

Philippe Lambert²

Vice President
+1 418 570 4627
philippe.lambert@cbre.com

William Grenon³

Associate Vice President
+1 418 690 6644
william.grenon@cbre.com

Maxime St-Pierre⁴

Associate Vice President
+1 418 564 7465
maxime.st-pierre@cbre.com

Maxime Paquet⁵

Associate Vice President
+1 418 573 9974
maxime.paquet@cbre.com



- 1. Chartered Real Estate Broker carrying out his activities with the business corporation Patrick Soucy inc.
- 2. Commercial real Estate Broker
- 3. Commercial Real Estate Broker carrying out his activities with the business corporation William Grenon inc.
- 4. Commercial Real Estate Broker carrying out his activities with the business corporation Maxime St-Pierre inc.
- 5. Commercial Real Estate Broker carrying out his activities with the business corporation Maxime Paquet inc.

CBRE Limited, Real Estate Agency | 2600 Laurier Boulevard, Suite 810, Quebec City, Quebec G1V 4W2 | +1 418 266 3640

This disclaimer shall apply to CBRE Limited, Real Estate Agency, and to all other divisions of the Corporation; to include all employees and independent contractors (“CBRE”). The information set out herein, including, without limitation, any projections, images, opinions, assumptions and estimates obtained from third parties (the “Information”) has not been verified by CBRE, and CBRE does not represent, warrant or guarantee the accuracy, correctness and completeness of the Information. CBRE does not accept or assume any responsibility or liability, direct or consequential, for the Information or the recipient’s reliance upon the Information. The recipient of the Information should take such steps as the recipient may deem necessary to verify the Information prior to placing any reliance upon the Information. The Information may change and any property described in the Information may be withdrawn from the market at any time without notice or obligation to the recipient from CBRE. CBRE and the CBRE logo are the service marks of CBRE Limited and/or its affiliated or related companies in other countries. All other marks displayed on this document are the property of their respective owners. All Rights Reserved. Mapping Sources: Canadian Mapping Services canadamapping@cbre.com; DMTI Spatial, Environics Analytics, Microsoft Bing, Google Earth.