

1000 REPUBLIC DRIVE
ALLEN PARK, MICHIGAN

OFFICE FOR LEASE
479 – 5,904 Square Feet Available



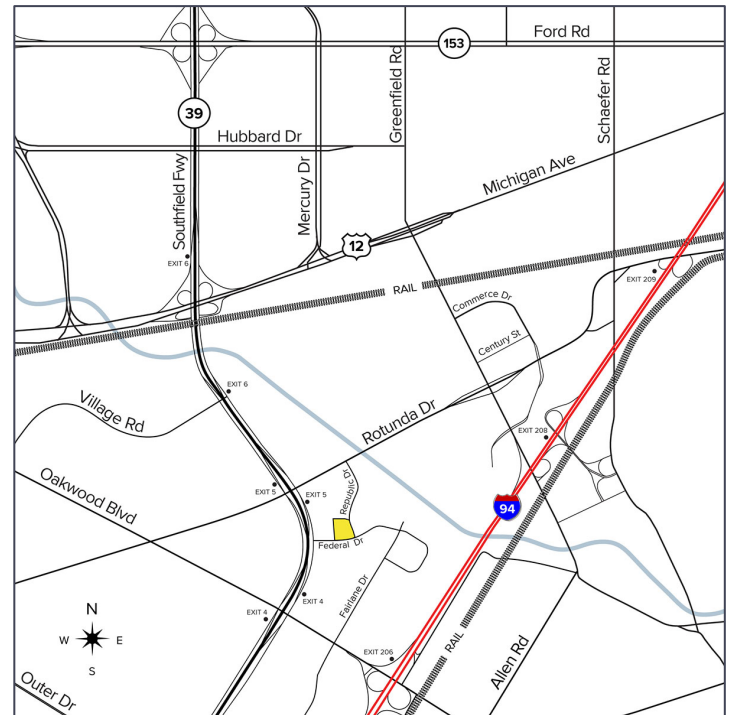
**SIGNATURE
ASSOCIATES**
KNOW SIGNATURE | KNOW RESULTS

FAIRLANE BUSINESS PARK



PROPERTY FEATURES

- 479 – 5,904 square foot suites available
- Located in Class A - Fairlane Business Park
- Suites ready for quick occupancy
- Excess parking surrounds the building
- Excellent location, close to vibrant business community, shopping/amenities, and multiple freeways
- Lease Rate: \$14.50/sq. ft. MG+U+J



For more information, please contact:

BRAD VIERGEVER
(248) 799 3146
bviergever@signatureassociates.com

CHRIS SECANTINE
(248) 799 3174
csecantine@signatureassociates.com

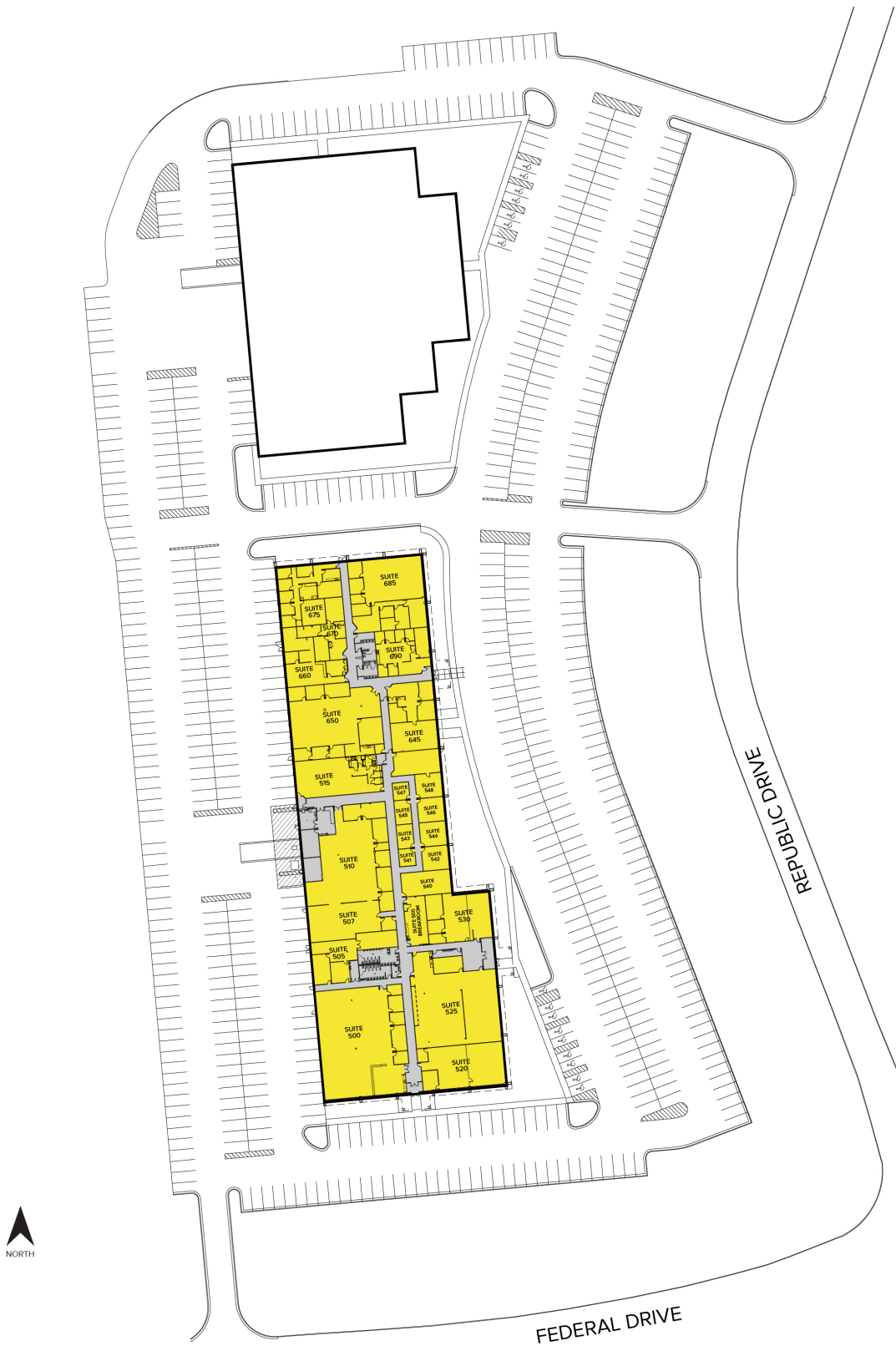
SIGNATURE ASSOCIATES
One Towne Square, Suite 1200
Southfield, MI 48076
www.signatureassociates.com

1000 Republic Drive – Allen Park, Michigan

Office For Lease

479 – 5,904
Square Feet
AVAILABLE

Site Plan



For more information, please contact:

BRAD VIERGEVER

(248) 799 3146

bviergever@signatureassociates.com

CHRIS SECANTINE

(248) 799 3174

csecantine@signatureassociates.com

SIGNATURE ASSOCIATES

One Towne Square, Suite 1200

Southfield, MI 48076

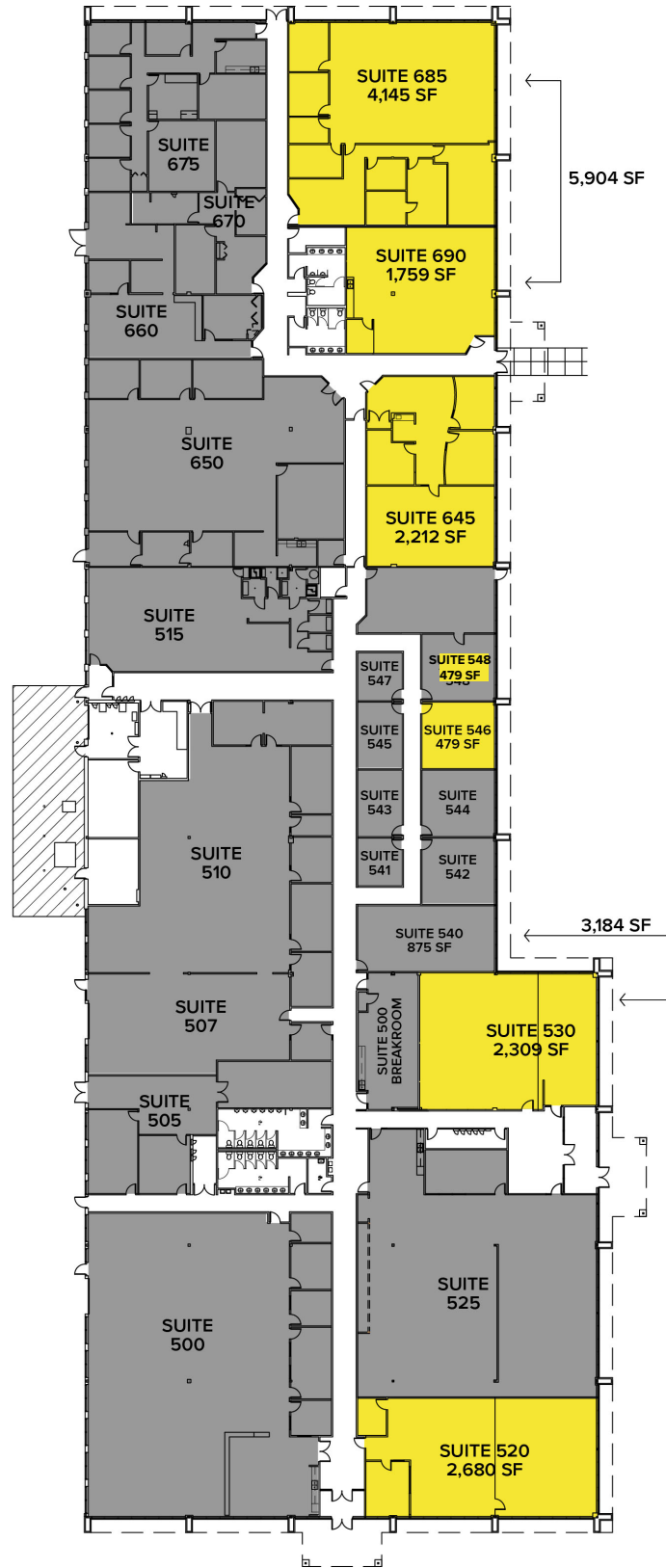
www.signatureassociates.com

1000 Republic Drive – Allen Park, Michigan

Office For Lease

479 – 5,904
Square Feet
AVAILABLE

Floor Plan



For more information, please contact:

BRAD VIERGEVER

(248) 799 3146

bviergever@signatureassociates.com

CHRIS SECONTINE

(248) 799 3174

csecontine@signatureassociates.com

SIGNATURE ASSOCIATES

One Towne Square, Suite 1200

Southfield, MI 48076

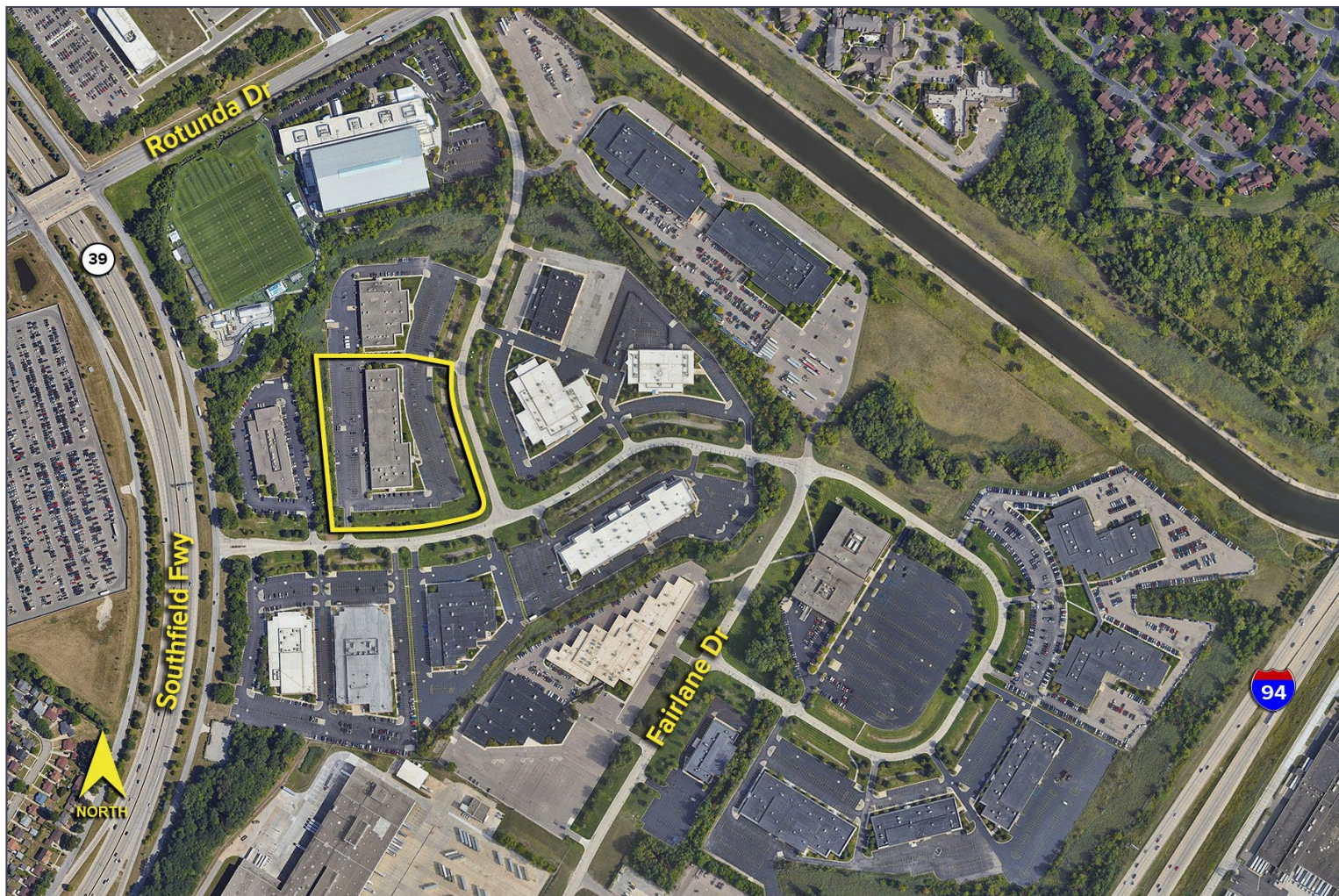
www.signatureassociates.com

1000 Republic Drive – Allen Park, Michigan

Office For Lease

479 – 5,904
Square Feet
AVAILABLE

Aerial



For more information, please contact:

BRAD VIERGEVER
(248) 799 3146
bviergever@signatureassociates.com

CHRIS SECANTINE
(248) 799 3174
csecantine@signatureassociates.com

SIGNATURE ASSOCIATES
One Towne Square, Suite 1200
Southfield, MI 48076
www.signatureassociates.com