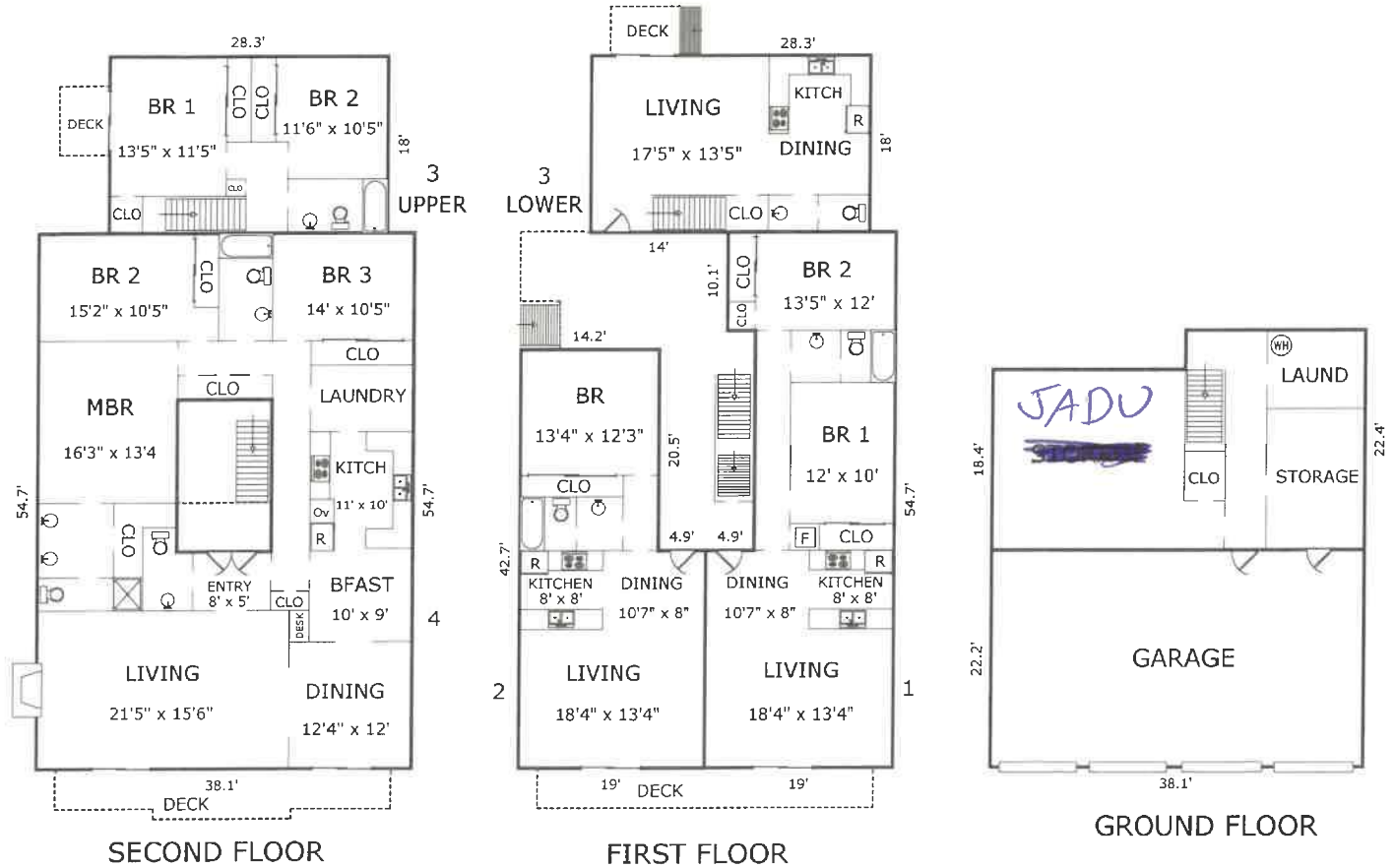


457 SPENCER STREET, MONTEREY, CA 93940

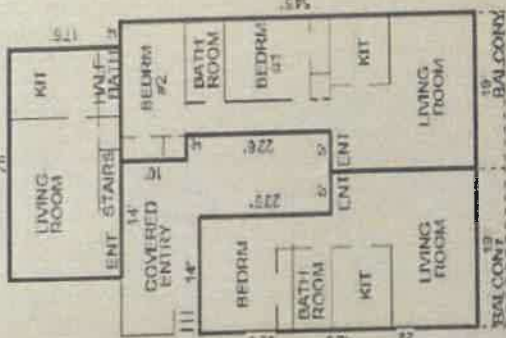


AREA CALCULATIONS

Unit 1:		913sf
Unit 2:		714
Unit 3 (lower):	508	
Unit 3 (upper):	470 =	978
Unit 4:		1,934
Net Livable Area:		4,539sf
Garage:		846
Storage and Laundry:		774
Deck (Unit 1):	68	Deck (Unit 2): 68
Deck (Unit 3):	35	Deck (Unit 3): 35
Deck (Unit 4):		151

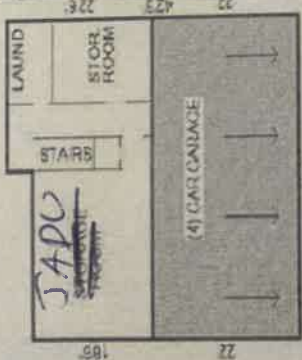
UNIT #3*
(1ST LEVEL)

OPEN CONCRETE PATIO



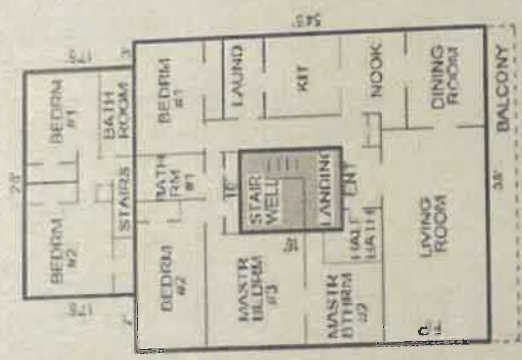
UNIT #1*

UNIT #2*



LOWER LEVEL

UNIT #0*
(2ND LEVEL)



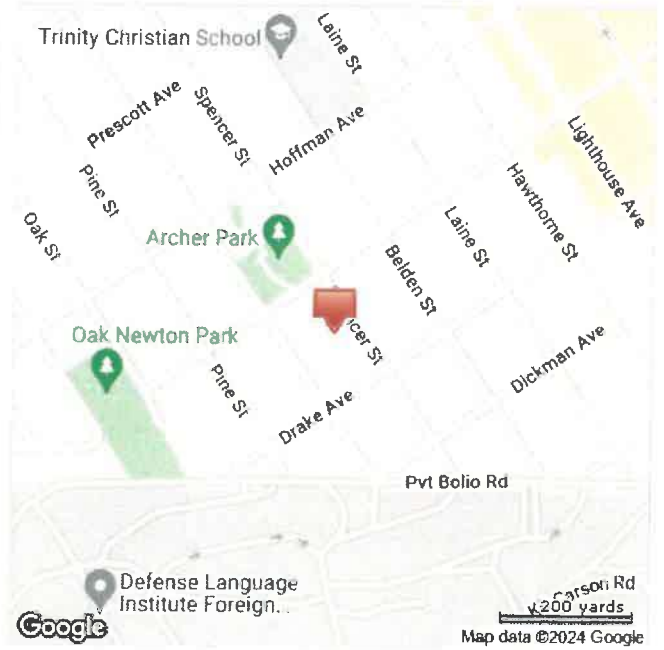
UNIT #4*

UNIT #1*	5 x 22 = 110	
	3 x 10 = 30	
	1.4 x 54.5 = 763	
Subtotal*	903	SF
UNIT #0* (1ST LEVEL)	13.5 x 38 = 513	SF
UNIT #2*	3.6 x 42.5 = 153	SF
	0 x 22 = 0	SF
Subtotal*	666	SF
Total*	1569	SF

UNIT #4*	3.0 x 54.5 = 163.5	SF
LAUNDRY STAIR WELL	1.0 x 16 = 16	SF
Subtotal*	179.5	SF
UNIT #3* (2ND LEVEL)	17.0 x 28 = 476	SF
Total*	655.5	SF

Section #3	4 x 18 = 72	SF
18.5 x 38 = 703		SF
Subtotal	775	SF
(4) CAR GARAGE	22 x 38 = 836	SF
Total	1611	SF
* Total O.L.A.	1656	SF
Total OTHER	1652	SF

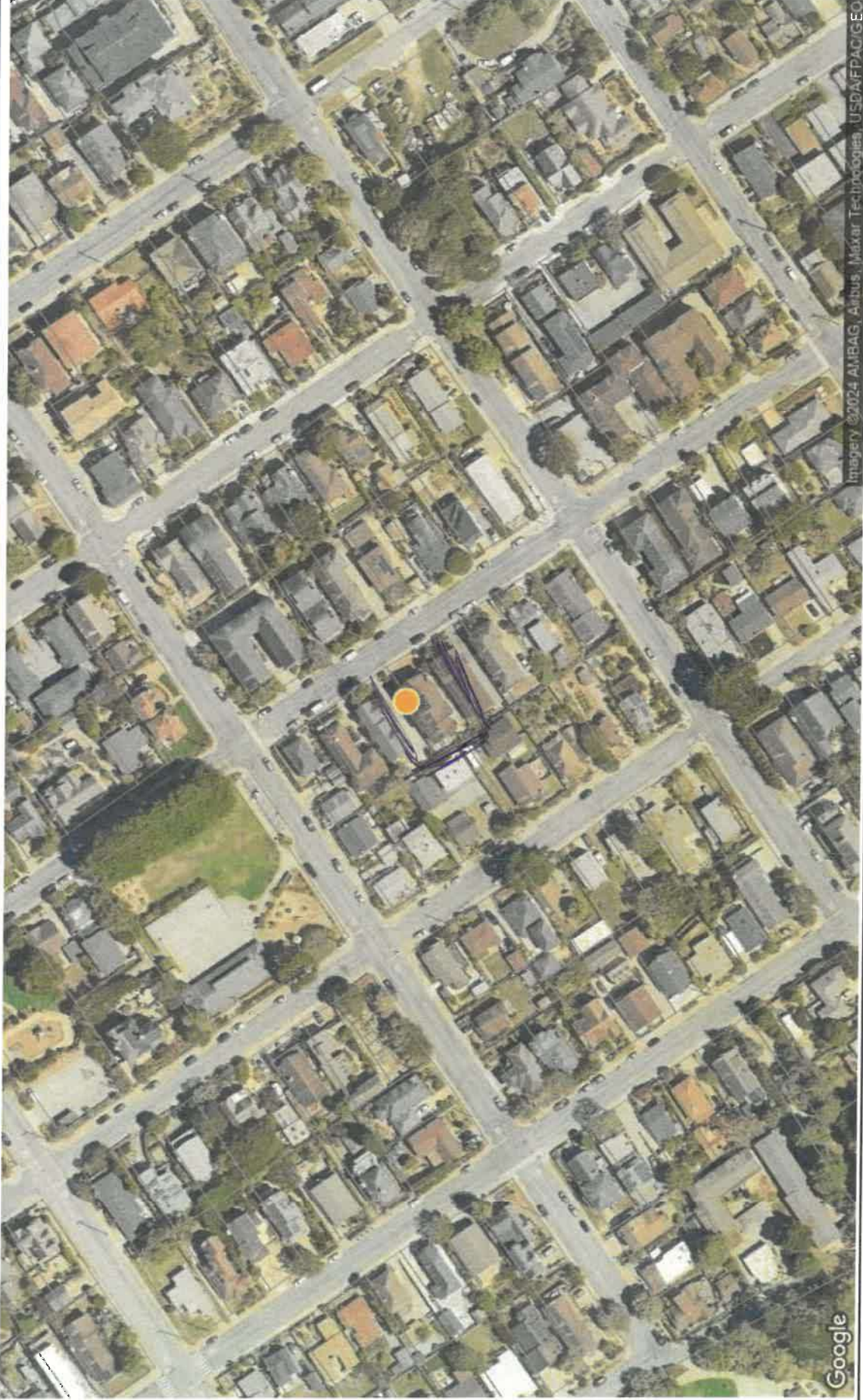
PROPERTY MAP



Aerial and Street Map Report

457 Spencer St #4 - Parcel # 001-099-005-000

Monterey, CA 93940 - Apartment



Imagery ©2024 AMBAG, Airbus, Maxar Technologies, USDA/FPA/C/EO

© 2024 CoStar Group - Licensed to A.G. Davi Property Management - 536396

A.G. DAVI
REAL ESTATE PROPERTY MANAGEMENT

