



FOR LEASE

# Randolph Village

7-51 Warren Street | Randolph, MA

SIGNATURE HEALTHCARE SIGNATURE MEDICAL GROUP

FAMILY PRACTICE & PEDIATRICS

WING-STOP

RiteAid



# Randolph Village

7-51 Warren Street | Randolph, MA 02368



FOR LEASE

## ABOUT THE PROPERTY

- 2,935 SF subdividable into two 1,500 SF spaces
- Fully built out former medical space.
- Tenants include Dunkin, Chipotle, Wingstop, Five Guys, Jersey Mike's, and Tori Japan.
- Dense neighborhood with high traffic counts.
- 215 parking spaces available.

1,500-2,935 SF

Available

Contact  
Broker

Rate

## JOIN THESE RETAILERS



## TRAFFIC COUNTS

Union Street, S of Site

19,361 VPD

Warren Street, W of Site

22,604 VPD

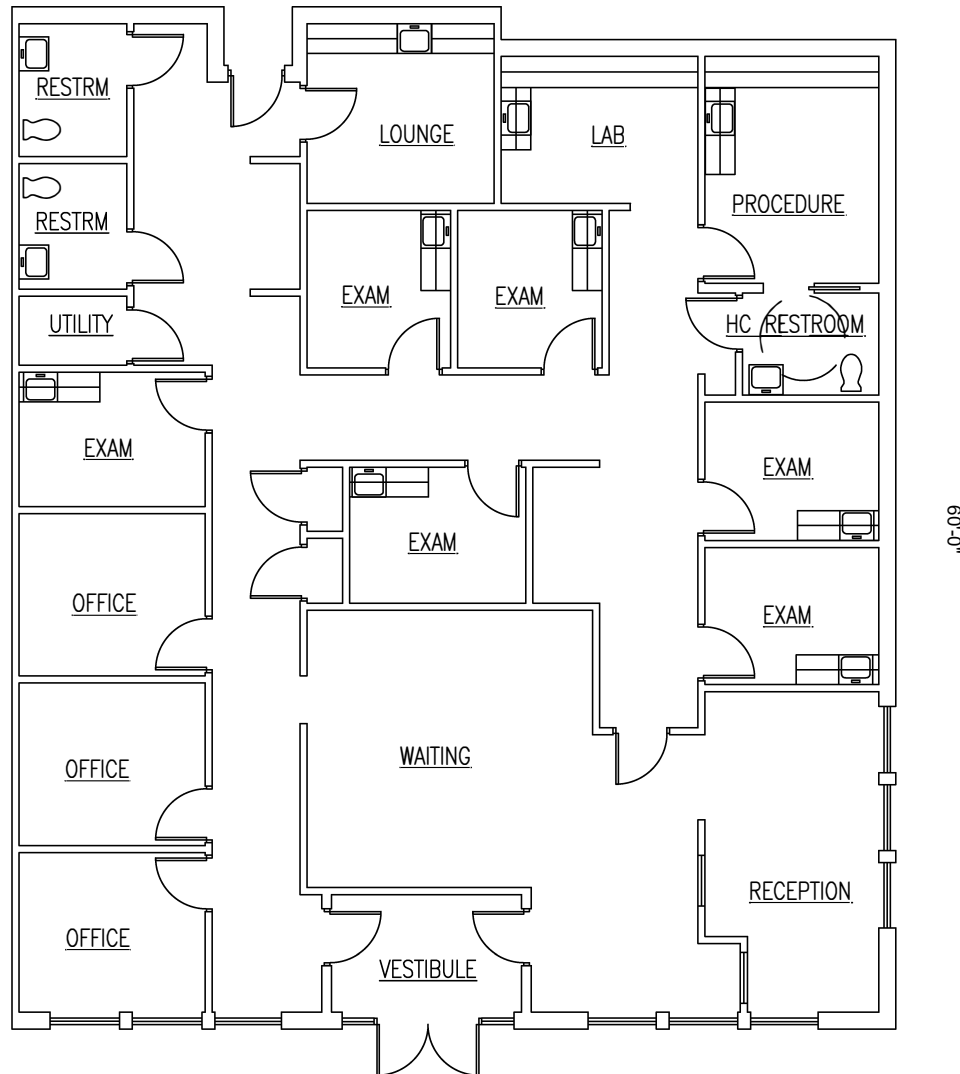
Year: 2019 | Source: massDOT

# Randolph Village

7-51 Warren Street | Randolph, MA 02368



50'-0"



**UNIT 7&8 FLOOR PLAN**

Not to Scale

**RANDOLPH VILLAGE PLAZA**

7-51 Warren Street, Randolph, MA



# Randolph Village

7-51 Warren Street | Randolph, MA 02368

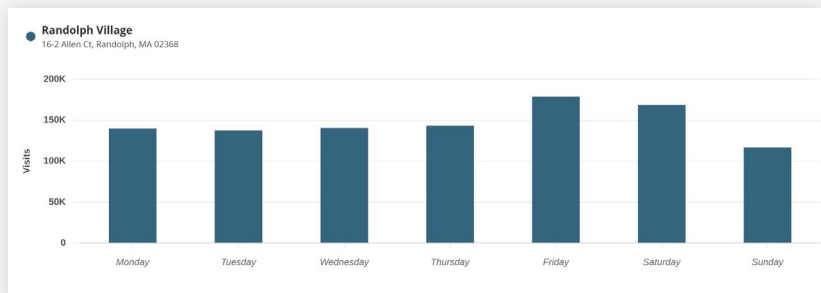


## MOBILE DATA & FOOT TRAFFIC INSIGHTS

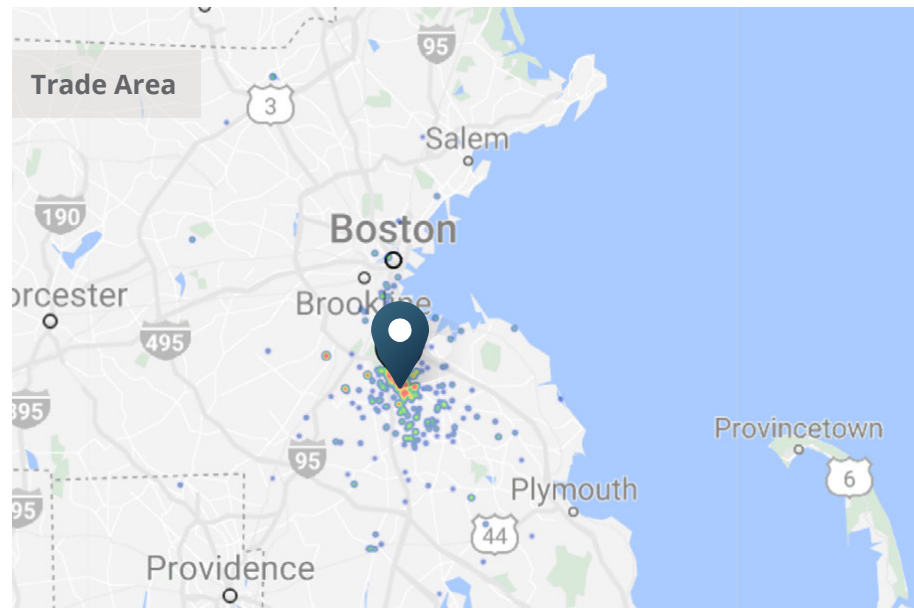
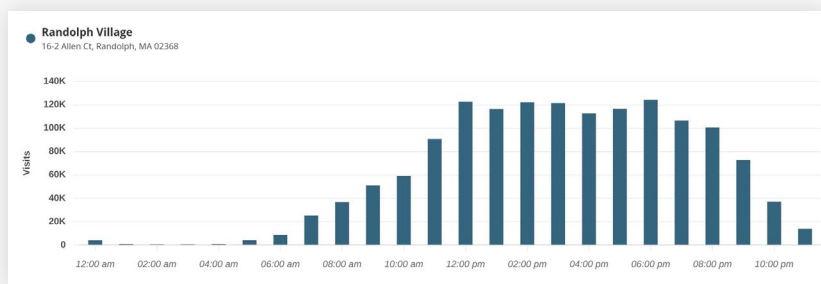
Estimated Annual Visits Jun 1, 2024 - May 31, 2025

Estimated # of Customers	Estimated # of Visits	Average Visits/Customer
225.9k	1m	4.54

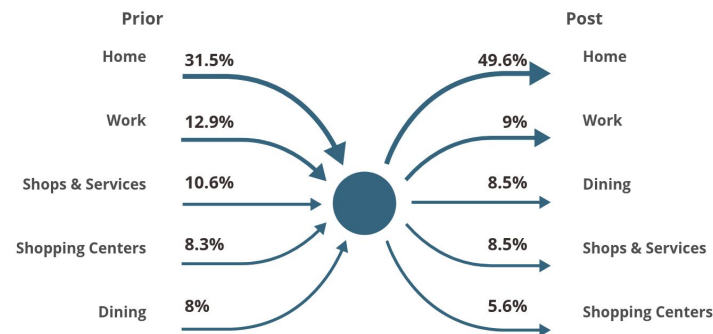
### Daily Visits



### Hourly Visits



### Customer Journey



> **Want more?** Contact us for a complete demographic, foot-traffic, and mobile data insights report.



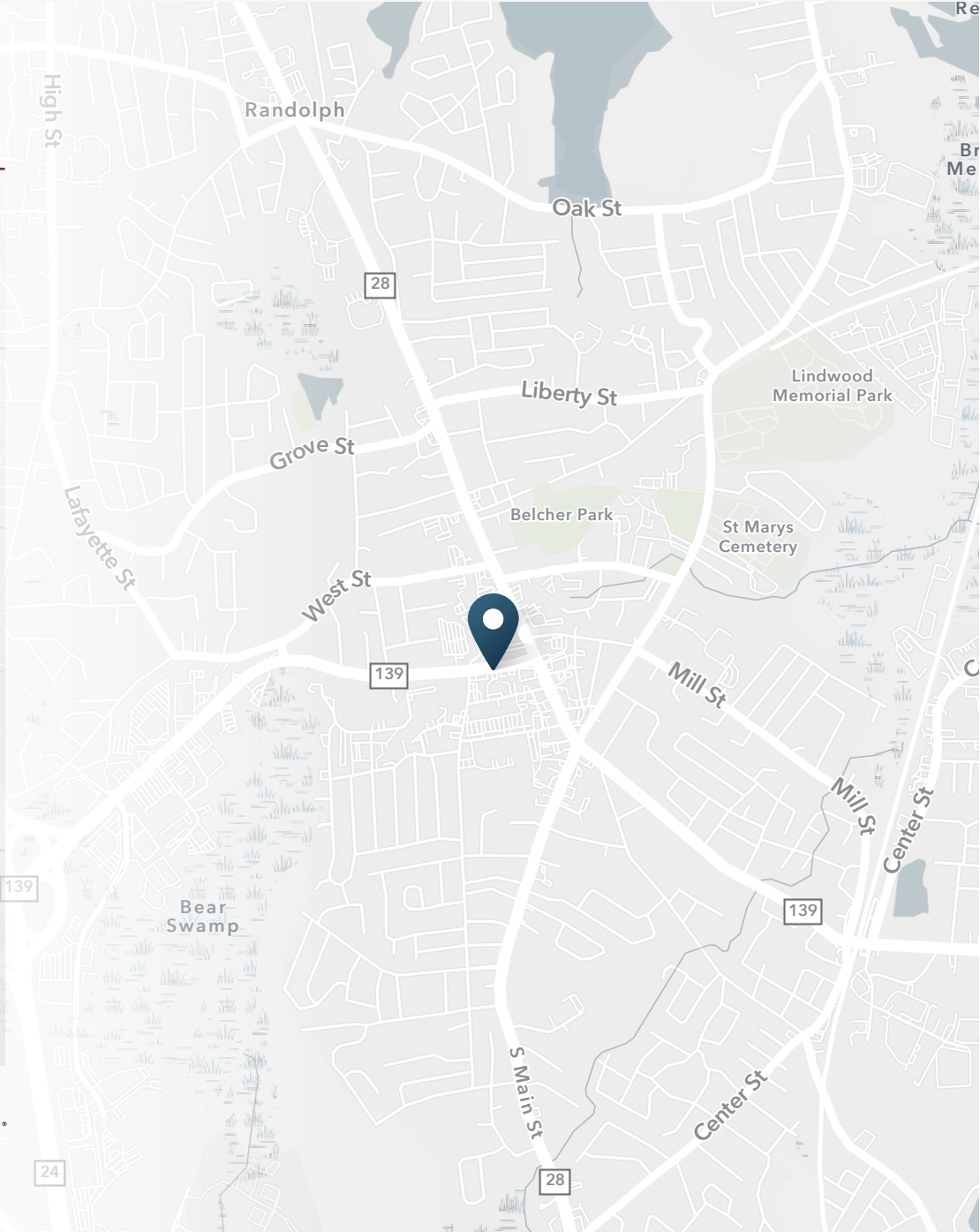
# Randolph Village

7-51 Warren Street | Randolph, MA 02368



## DEMOGRAPHIC HIGHLIGHTS

Population	1 mile	3 miles	5 miles
2024 Estimated Population	13,970	60,888	165,872
2029 Projected Population	14,003	60,799	165,982
Proj. Annual Growth 2024 to 2029	0.05%	-0.03%	0.01%
Daytime Population			
2024 Daytime Population	11,588	74,824	190,881
Workers	4,246	46,237	113,074
Residents	7,342	28,587	77,807
Income			
2024 Est. Average Household Income	\$117,766	\$133,704	\$137,032
2024 Est. Median Household Income	\$86,783	\$102,003	\$101,875
Households & Growth			
2024 Estimated Households	5,156	22,035	62,725
2029 Estimated Households	5,206	22,178	63,381
Proj. Annual Growth 2024 to 2029	0.19%	0.13%	0.21%
Race & Ethnicity			
2024 Est. White	24%	42%	52%
2024 Est. Black or African American	47%	32%	22%
2024 Est. Asian or Pacific Islander	12%	12%	10%
2024 Est. American Indian or Native Alaskan	0%	0%	0%
2024 Est. Other Races	16%	14%	16%
2024 Est. Hispanic (Any Race)	11%	10%	8%



> **Want more?** Contact us for a complete demographic, foot-traffic, and mobile data insights report.





**SRS Real Estate Partners**  
400 Fifth Avenue, Suite 105  
Waltham, MA 02451  
857.263.3839

**BRIAN NADLER**  
617.665.7395  
brian.nadler@srsre.com

**SAMANTHA MAZZA**  
617.880.7618  
samantha.mazza@srsre.com

**JONATHAN LAPAT**  
Broker of Record

**SRSRE.COM**

© SRS Real Estate Partners

The information presented was obtained from sources deemed reliable;  
however SRS Real Estate Partners does not guarantee its completeness or accuracy.