



Turn-Key Bakery Building For Sale
1915 N. 16TH STREET | PHOENIX, ARIZONA 85006

OFFERING DETAILS



\$995,000 (\$229.26/SF)
Sale Price



±4,340 SF
Total Square Footage



117-16-103
Parcel Number



1940
Year Built



4 Reserved Spaces
Parking



C-2, City of Phoenix
[\(Click Here To View Zoning\)](#)
Zoning



\$5,134.00 (\$1.18/SF)
2023 Taxes

PROPERTY HIGHLIGHTS

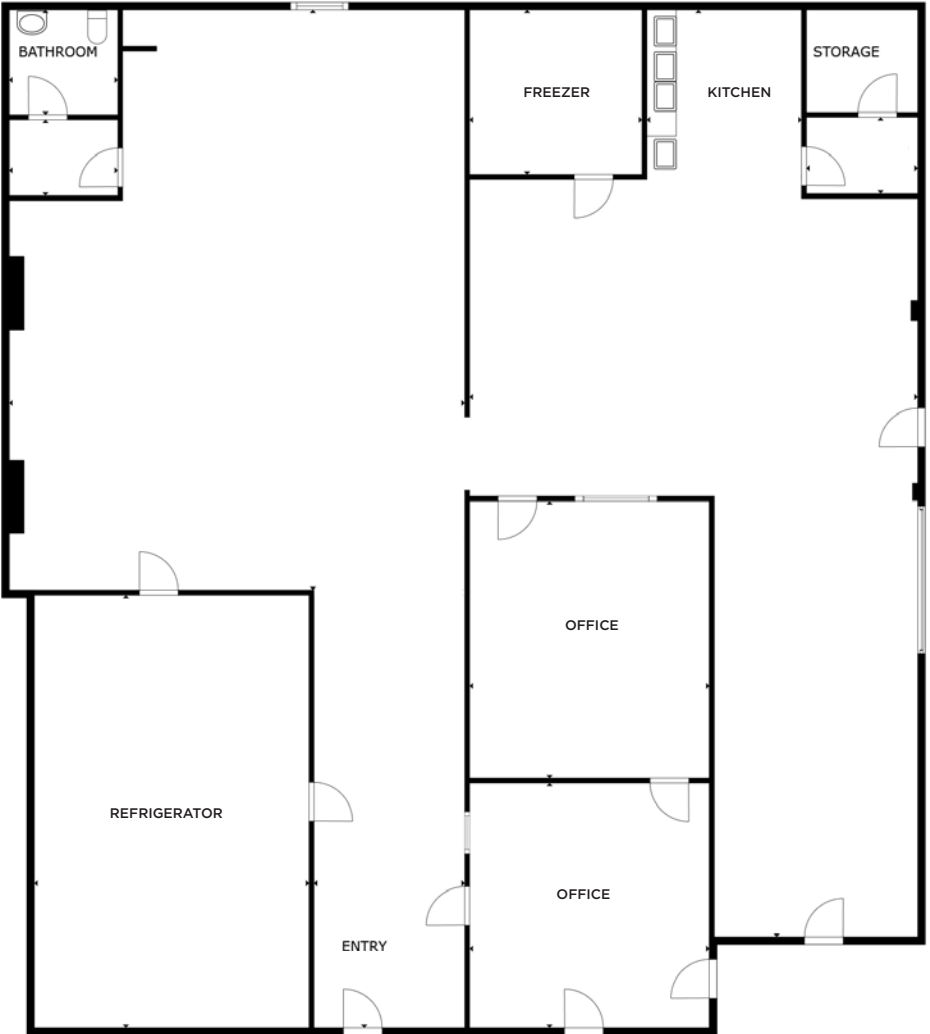
- Turnkey Bakery with Ovens, Walk-In Freezer & Refrigerator Ready for Immediate Occupancy
- Conveniently Located with Immediate Access to I-10 & SR-51
- Equipped with Storage Racks and a Roll-Up Door, Ideal for Distribution
- Extensive Bakery FF&E included within Sale



FLOOR PLAN

±4,340 SF

[▶ VIEW VIRTUAL TOUR](#)

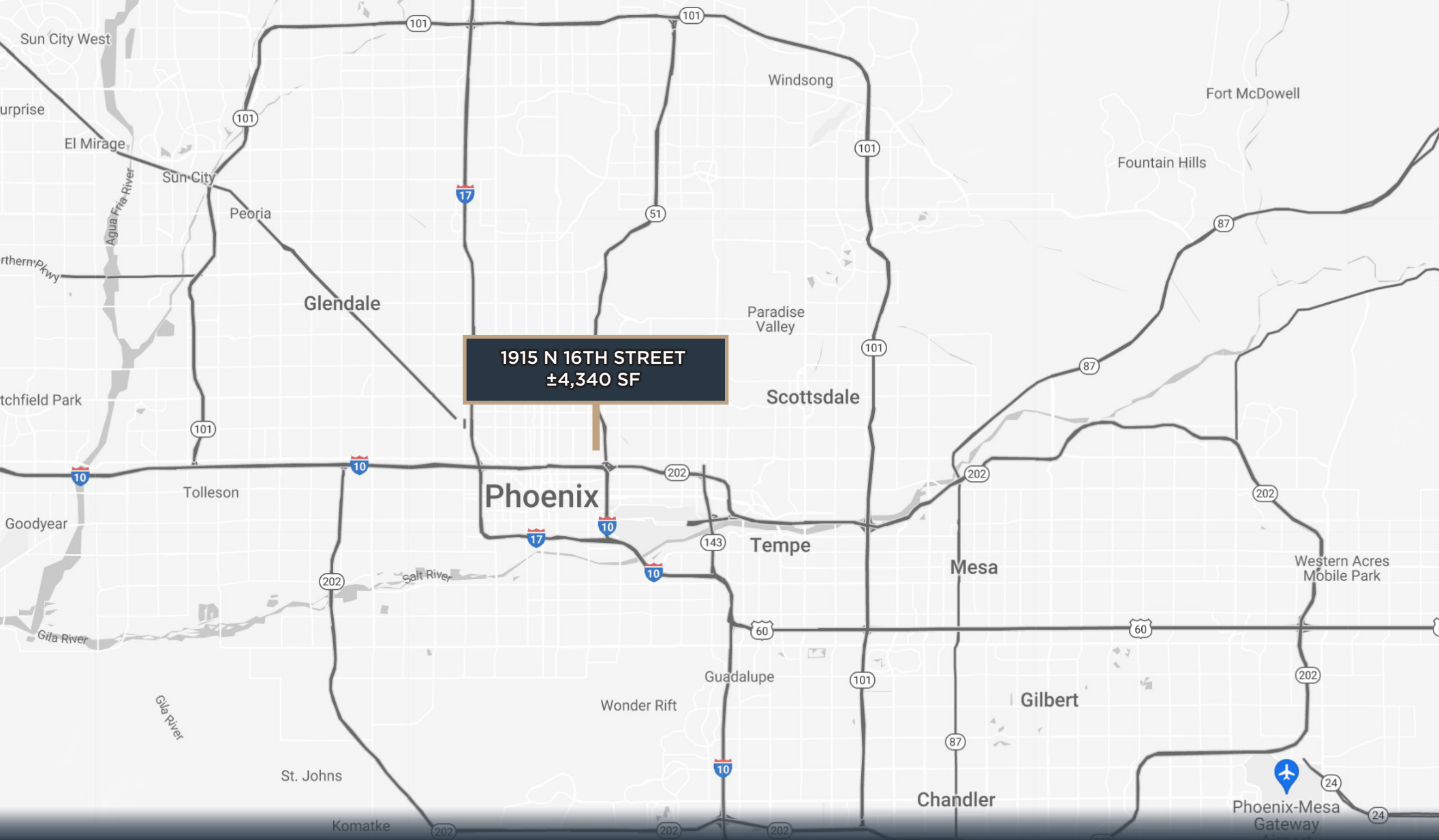


INTERIOR PHOTOS



AERIAL OVERVIEW





DRIVE TIMES FROM SITE

20

MINUTES TO SCOTTSDALE

15

MINUTES TO TEMPE

23

MINUTES TO MESA

27

MINUTES TO CHANDLER

24

MINUTES TO GLENDALE

DEMOGRAPHICS



POPULATION

	1 MILE	3 MILES	5 MILES
2024	19,659	166,517	360,767
2029	21,377	182,469	392,879



HOUSEHOLDS

	1 MILE	3 MILES	5 MILES
2024	7,678	73,850	151,245
HH Growth 2024-2029:	1.8%	2.0%	1.8%



AVERAGE HOUSEHOLD INCOME

	1 MILE	3 MILES	5 MILES
2024	\$66,279	\$78,108	\$84,014





Zak Kottler
Partner

480.294.6003

zkottler@levrose.com

Joe Cosgrove
Partner

480.294.6013

jcosgrove@levrose.com

Hunter Chasse
Vice President

480.289.4225

hchasse@levrose.com

LEVROSE
COMMERCIAL REAL ESTATE

