



LOT SIZE:
60 ACRES +/-

PRICE:
\$800,000.00

HIGHLIGHTS:

- Access to water & sewer on north side of property
- Easy Access to Hwy 49



Mike Ilse

Broker Associate | Partner
Commercial Realtor®

701.223.2450
mike@aspengrouprealestate.com

424 S 3rd Street, Suite 2 | Bismarck, ND | WWW.ASPENGROUPREALESTATE.COM

This information has been secured from sources we believe to be reliable, but we make no representation or warranties, expressed or implied, as to the accuracy of the information. All references to age, square footage, income and expenses are approximate. Buyers or lessors should conduct their own independent investigations and rely on those results.

PROPERTY DETAILS

PID: BB-144-88-90-27-01 (Unplatted)
LEGAL DESCRIPTION: TRACT W OF CENTURY 2ND ADDN
LOT SIZE: 7.510 AC
2023 TAXES: \$154.13
SPECIAL ASSESSMENTS: None at this time

PID#: 27-144-88-00-24-203
LEGAL DESCRIPTION: TRACT IN NE4
LOT SIZE: 12.11 AC
2023 TAXES: \$24.17
SPECIAL ASSESSMENTS: None at this time

871 CITY ROAD 19

PID#: 27-144-88-00-24-801
LEGAL DESCRIPTION: FRAC SE4
LOT SIZE: 42.4 AC
2023 TAXES: \$184.24
SPECIAL ASSESSMENTS: None at this time



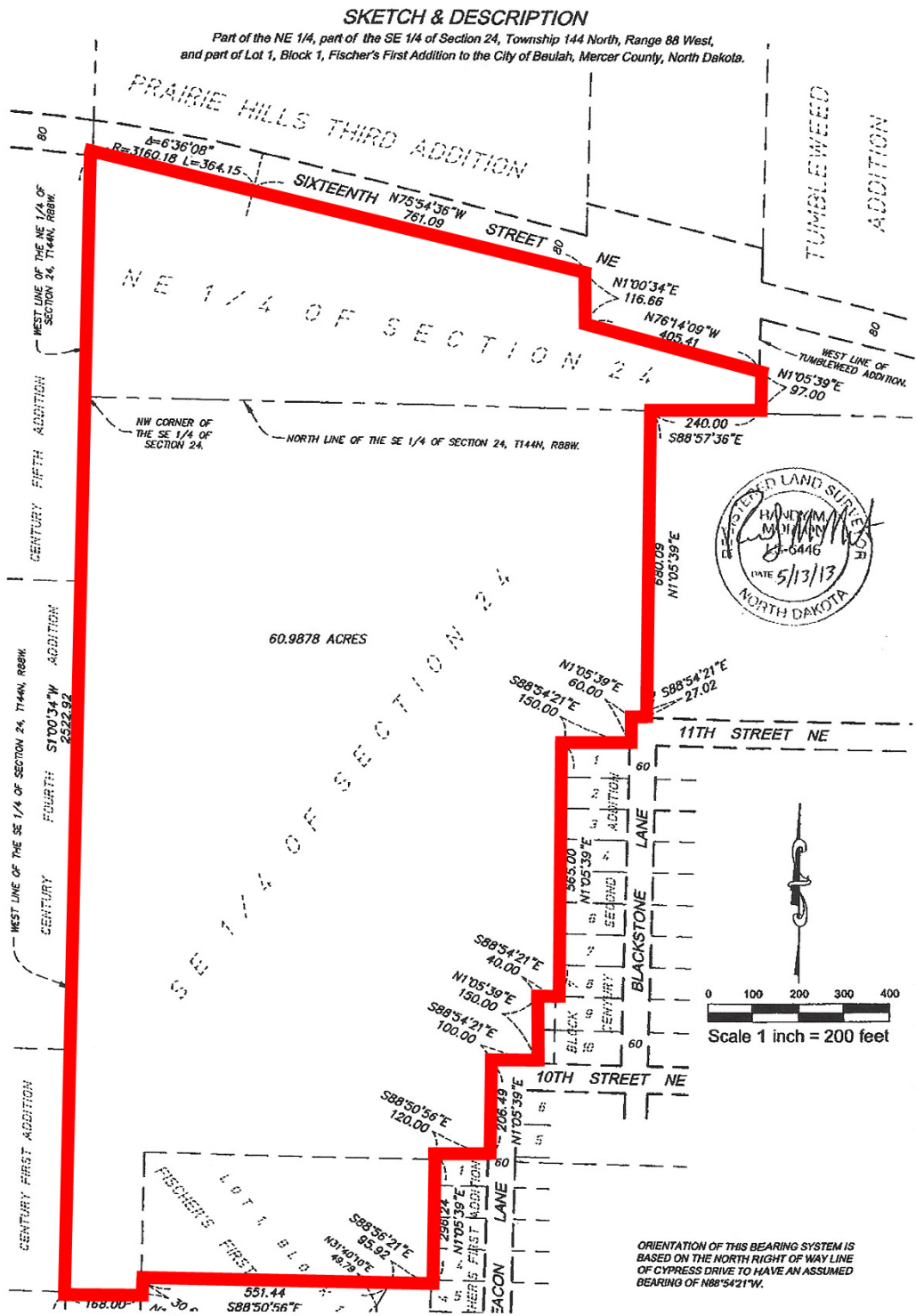
Mike Ilse

Broker Associate | Partner
Commercial Realtor®

701.223.2450

mike@aspengrouprealestate.com

PLAT MAP



424 S 3rd Street, Suite 2 | Bismarck, ND | WWW.ASPENGROUPREALESTATE.COM

This information has been secured from sources we believe to be reliable, but we make no representation or warranties, expressed or implied, as to the accuracy of the information. All references to age, square footage, income and expenses are approximate. Buyers or lessors should conduct their own independent investigations and rely on those results.

LOCATION MAP



424 S 3rd Street, Suite 2 | Bismarck, ND | WWW.ASPENGROUPREALESTATE.COM

This information has been secured from sources we believe to be reliable, but we make no representation or warranties, expressed or implied, as to the accuracy of the information. All references to age, square footage, income and expenses are approximate. Buyers or lessors should conduct their own independent investigations and rely on those results.