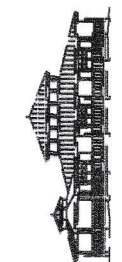


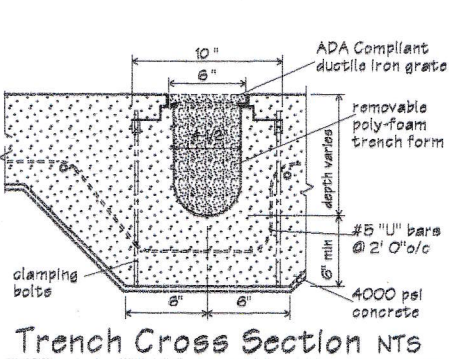
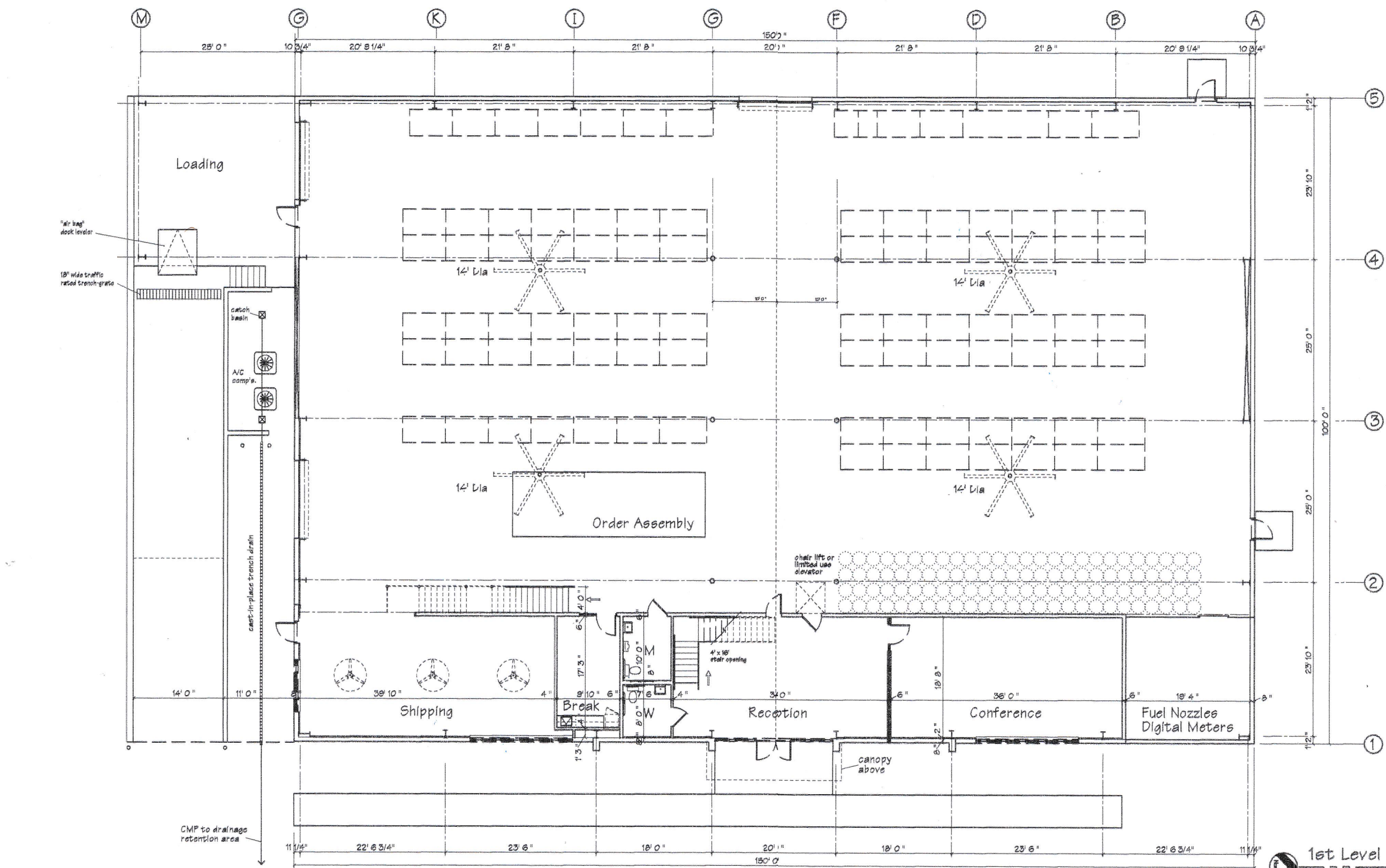
These drawings, as instruments of service, are the property of the architect whether the project for which they are prepared be executed or not. They shall not be used for other projects except by written agreement. Copyright © 2020 John M. Foster Architect All rights reserved.

Date	By	Description	Revisions
05/21/20	JMF	Issued for Rolloff	

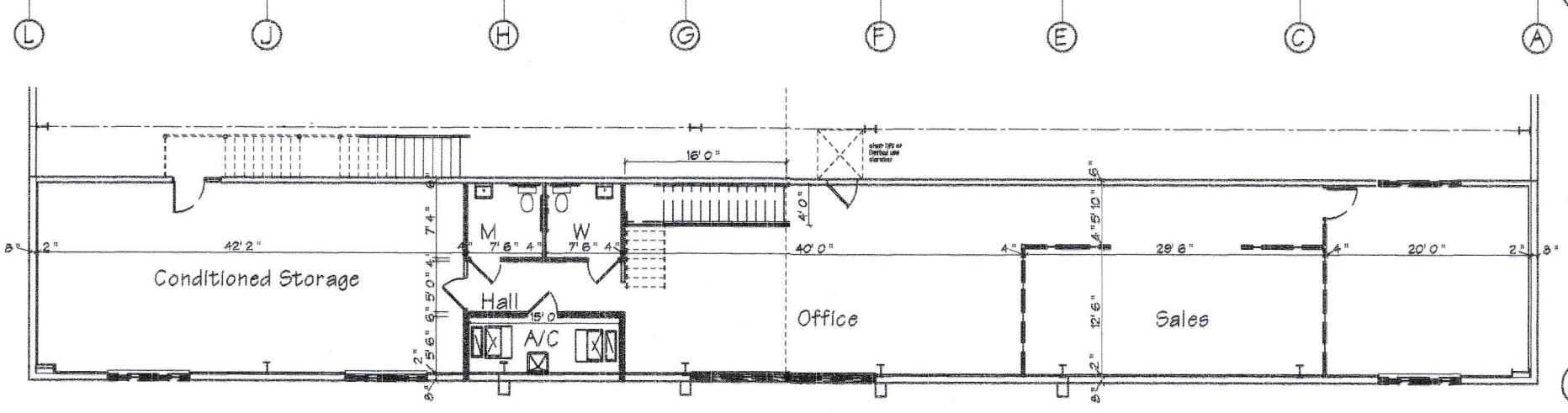


John M. Foster - Architect
 Member - American Institute of Architects
 11205 Ridge Avenue Ft. Pierce, Florida 34982
 (772) 970-9464 - Florida Registration No. 6031
 Fax (772) 978-7399

Warehouse & Office Building for:
WolfLube Equipment LLC
 St. Lucie County, Florida



EconoDrain - Series 4 sloped drain system w/
 #EG-0424-1DI-ADA grates - AASHTO M306-HS25
 (50,000#) load rating. Available via direct order:
 Multi-Drain Systems - (704) 508-1010
 1405 Statesville, NC 28625



1st Level Plan
 Building Areas

Warehouse	12,000	SF
Shipping	810	SF
1st Level Office	1,785	SF
2nd Level Office	2140	SF
A/C Storage	860	SF
Loading Dock	635	SF
Total	18,220	SF

2nd Level Plan