



TOWER ONE • 1250 WATERS PLACE

PRIME MEDICAL / OFFICE SPACE FOR LEASE IN BRONX, NY

SPACE AVAILABLE:

Floor 12: 6,000 SF

PRICE:

Upon Request

AVAILABLE:

Q3 2024

CAMPUS FEATURES:

- 24/7 Security Services
- Retail Amenities
- Cafe
- Fitness Center
- Teleconference Center
- Pharmacy
- Marriott Hotel
- Auto Detailer
- Shuttle Bus to Westchester Square MTA #6 Subway Train
- MTA Bus Routes: Bx21, Bx24, Bx31, Bx40
- Abundant Parking

FOR LEASING INFORMATION:

Simone Development

Josh Gopan

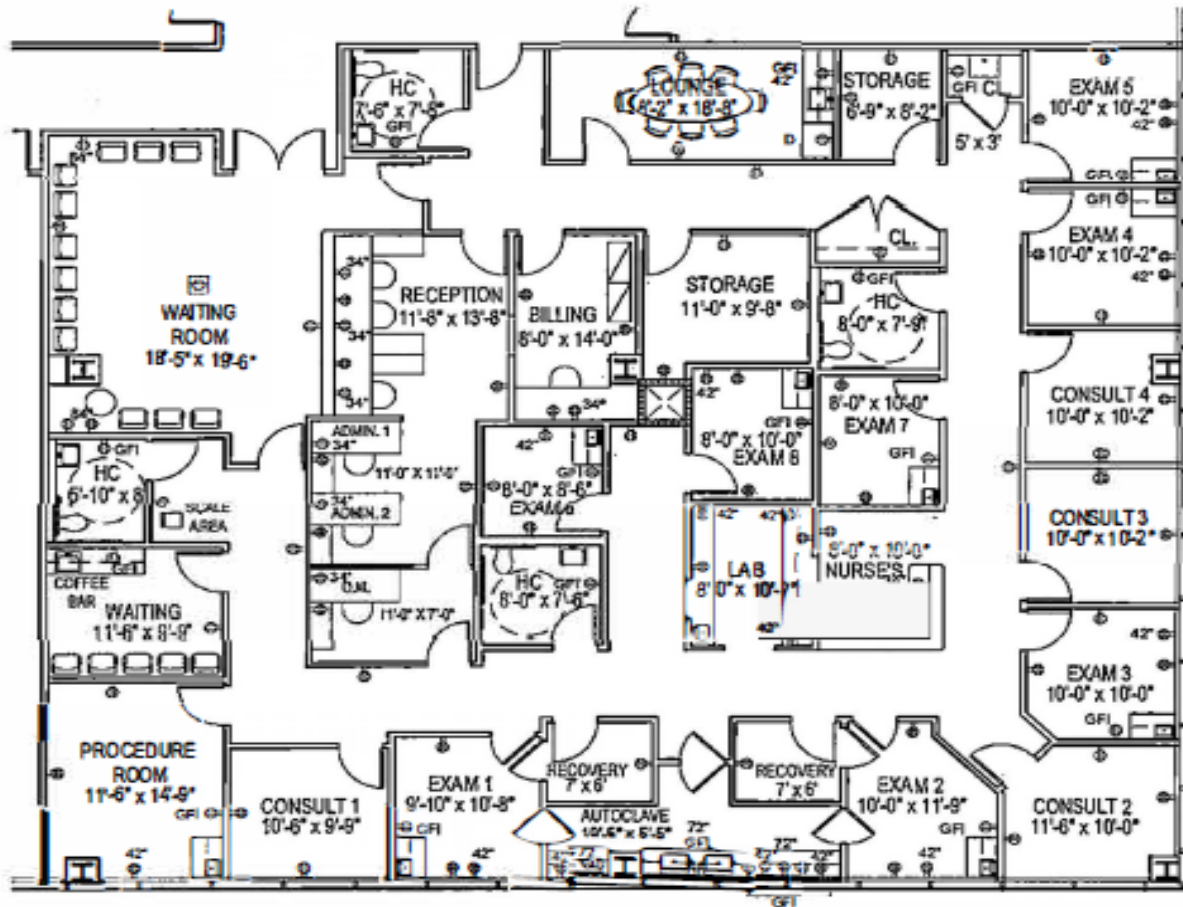
jgopan@simdev.com | 718-215-3000 x113

Jeremy Schwartz

jschwartz@simdev.com | 718-215-3000 x296

OFFICE SPACE

SPACE AVAILABLE:
FLOOR 12 • 6,000 SF



FOR LEASING INFORMATION:

Josh Gopan
718-215-3000 x113
jgopan@simdev.com

Jeremy Schwartz
718-215-3000 x296
jschwartz@simdev.com

SIMONE[®]
DEVELOPMENT COMPANIES

simdev.com