

EXCLUSIVELY OFFERED BY WILSON HUTCHISON REALTY, LLC

**6820 Meadowridge Court,
Suite B3
Alpharetta, GA 30005
The Meadows**

**Office/Warehouse
Space For Lease
Available Now**

\$13.50 SF + \$3.53 OPEX

- +/- 2,000 SF for each space available
- (1) 10x12 Drive-In Overhead Door
- Light Industrial Complex. 2 miles from GA 400



Mike Weber

**770-560-9942 or email
Mike@wilsonhutch.com**



The information has been secured from sources we believe to be reliable, but we make no representations or warranties, expressed or implied, as to the accuracy of the information.

5755 North Point Parkway, Suite 44, Alpharetta, GA 30022 Tel: 770-242-7917 Fax: 678-325-4824 | www.wilsonhutch.com

**6820 Meadowridge Court,
Suite B3
Alpharetta, GA 30005
The Meadows**

EXCLUSIVELY OFFERED BY WILSON HUTCHISON REALTY, LLC



Mike Weber

**770-560-9942 or email
Mike@wilsonhutch.com**



**WILSON HUTCHISON
REALTY, LLC**

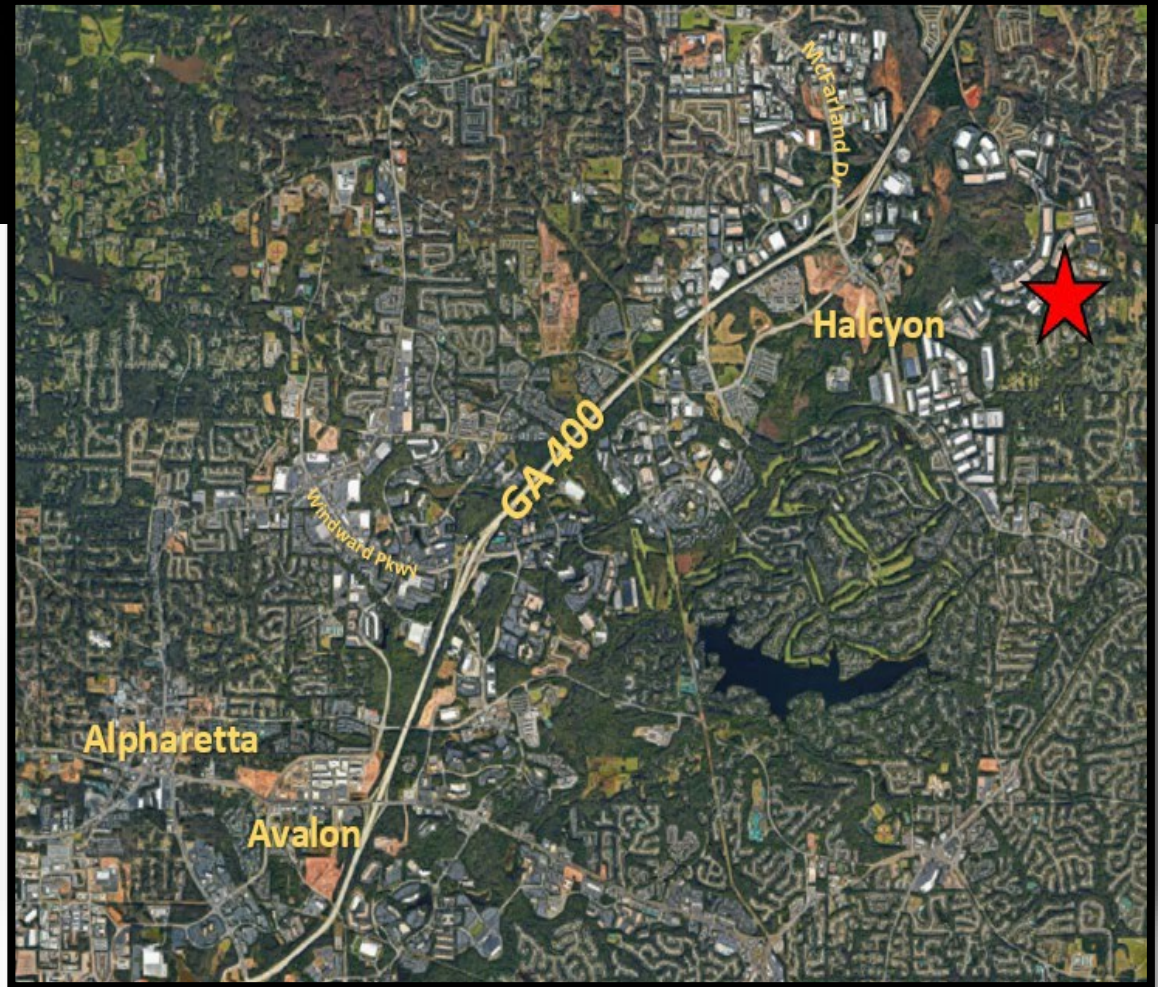
The information has been secured from sources we believe to be reliable, but we make no representations or warranties, expressed or implied, as to the accuracy of the information.

5755 North Point Parkway, Suite 44, Alpharetta, GA 30022 Tel: 770-242-7917 Fax: 678-325-4824 | www.wilsonhutch.com

**6820 Meadowridge Court,
Suite B3
Alpharetta, GA 30005
The Meadows**

EXCLUSIVELY OFFERED BY WILSON HUTCHISON REALTY, LLC

**Office/Warehouse Space
For Lease
Available
Now**



Mike Weber
770-560-9942 or email
Mike@wilsonhutch.com



The information has been secured from sources we believe to be reliable, but we make no representations or warranties, expressed or implied, as to the accuracy of the information.

5755 North Point Parkway, Suite 44, Alpharetta, GA 30022 Tel: 770-242-7917 Fax: 678-325-4824 | www.wilsonhutch.com

**6820 Meadowridge Court,
Suite B3
Alpharetta, GA 30005
The Meadows**

EXCLUSIVELY OFFERED BY WILSON HUTCHISON REALTY, LLC

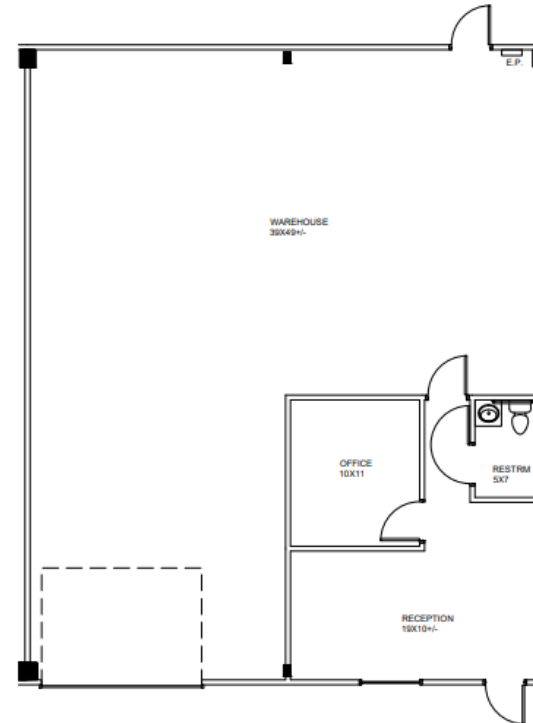
**Office/Warehouse Space
For Lease
Available
Now**

Mike Weber

**770-560-9942 or email
Mike@wilsonhutch.com**



**WILSON HUTCHISON
REALTY, LLC**



SUITE B-3--2,000 RSF
SCALE N.T.S.

SUITE B3

AS-BUILT PLAN

**6820 MEADOWRIDGE COURT
ALPHARETTA, GA 30005**

12.08.23

ARCHITECTURAL DESIGN INNOVATIONS

ADI, Inc.

The information has been secured from sources we believe to be reliable, but we make no representations or warranties, expressed or implied, as to the accuracy of the information.