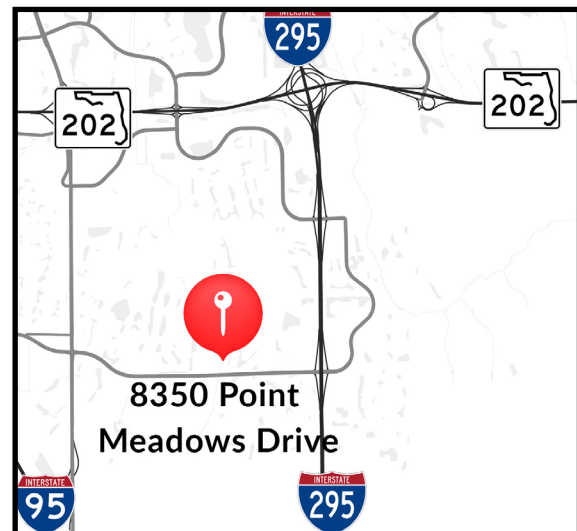


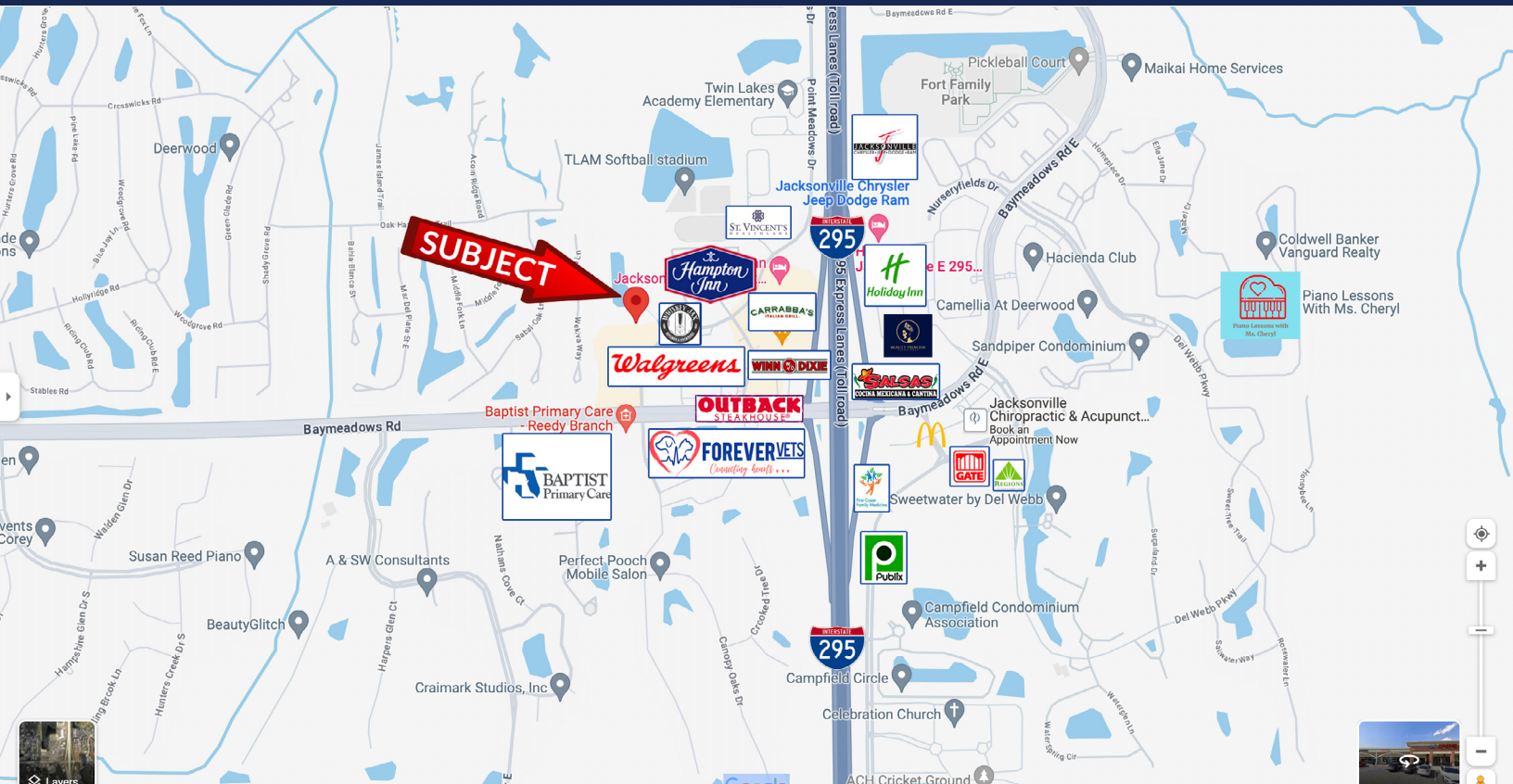


8350 Point Meadows Drive | Jacksonville, FL 32256

Medical/Professional Office Space

- Prime professional/medical office space for lease
- Located in busy corridor of Baymeadows and Gate Pkwy
- Available 15,300± sqft
- Traffic count: 81,500 ± AADT Baymeadows Rd. & I-295
- Surrounding retailers include: IKEA, Publix, Outback & Winn-Dixie





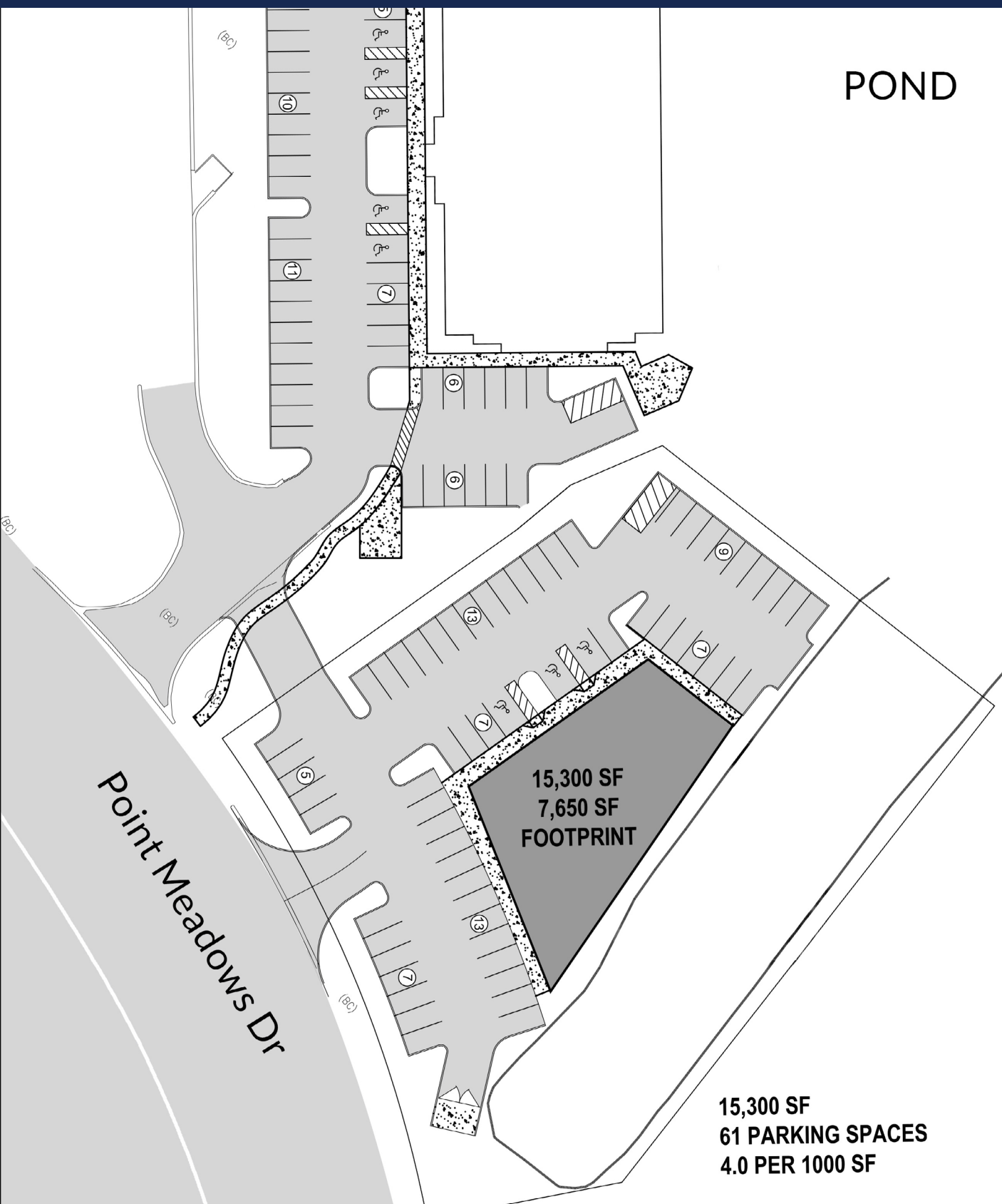
Demographic Information

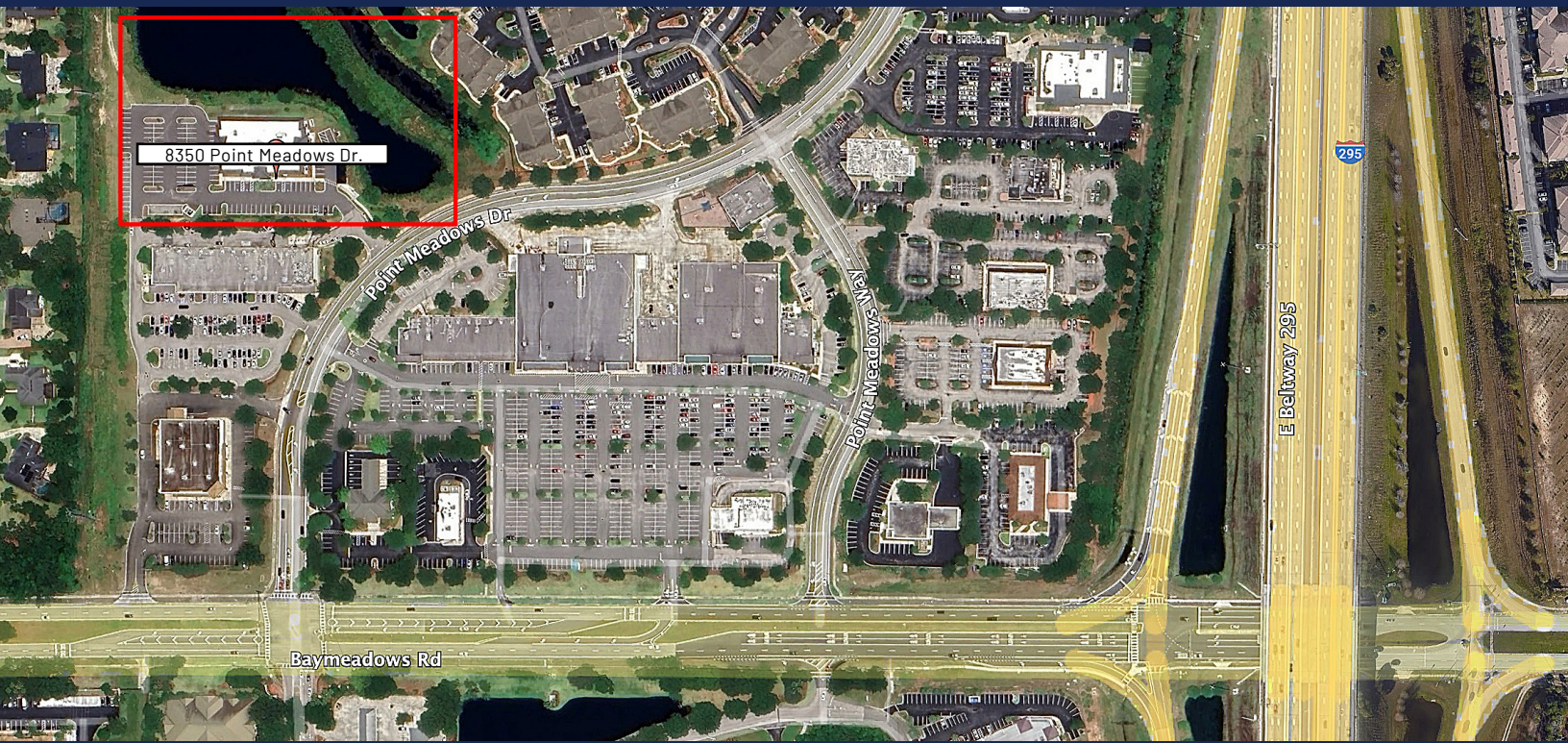
HOUSEHOLDS

	1 Mile 3	Mile 5	Mile
2010 Census	5,764	41,194	95,647
2023 Estimate	10,667	57,641	124,160
2028 Projection	11,718	61,640	131,619

INCOME

	1 Mile 3	Mile 5	Mile
Average Household Income	\$118,337	\$93,254	\$93,595
Median Household Income	\$89,436	\$67,867	\$71,214





Listing Agents



Mert Kerimoglu

Senior Advisor
Healthcare Brokerage - Development
Mobile: (617) 899-3046
Mert.Kerimoglu@crossregions.com



Taylor Rice

Sales Associate
Mobile: (516) 816-9745
Taylor.Rice@crossregions.com