



1,500 SF - 6,300 SF OF PRIME RETAIL SPACE AVAILABLE

RETAIL | FOR LEASE

RICHLAND MALL

5375 WILLIAM FLYNN HIGHWAY, GIBSONIA, PA 15044

ZAMAGIAS
PROPERTIES

Property Highlights

217K

sq foot center

15+

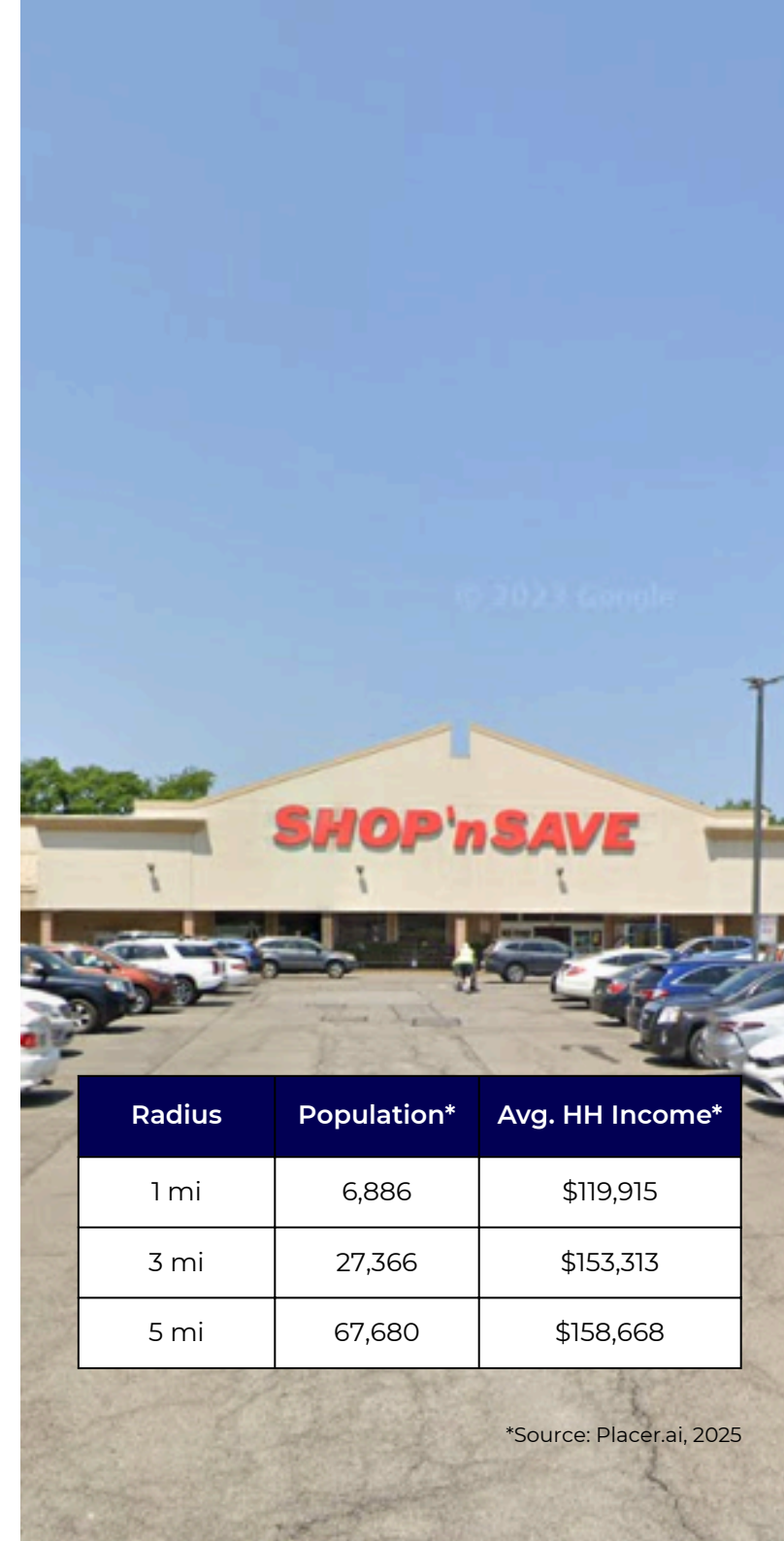
retail tenants

1.3M

visits per year*

High volume grocery-anchored shopping center

- Richland Mall is a recently redeveloped 217,636 SF community center located at Exit 39 of PA Interstate 76 with easy on/off access. The center is easily accessible to surrounding communities and receives excellent visibility from the area's major retail corridor, Route 8.
- Draws from a large consumer base, including a trade area of 85.43 mi².*
- Co-tenants include: Kohl's, T.J. Maxx, SHOP 'n SAVE, Emiliano's, NuAge Fitness Center, Toyland, 8 Star Cuisine, AHN, and others.



| Radius | Population* | Avg. HH Income* |
|--------|-------------|-----------------|
| 1 mi | 6,886 | \$119,915 |
| 3 mi | 27,366 | \$153,313 |
| 5 mi | 67,680 | \$158,668 |

*Source: Placer.ai, 2025

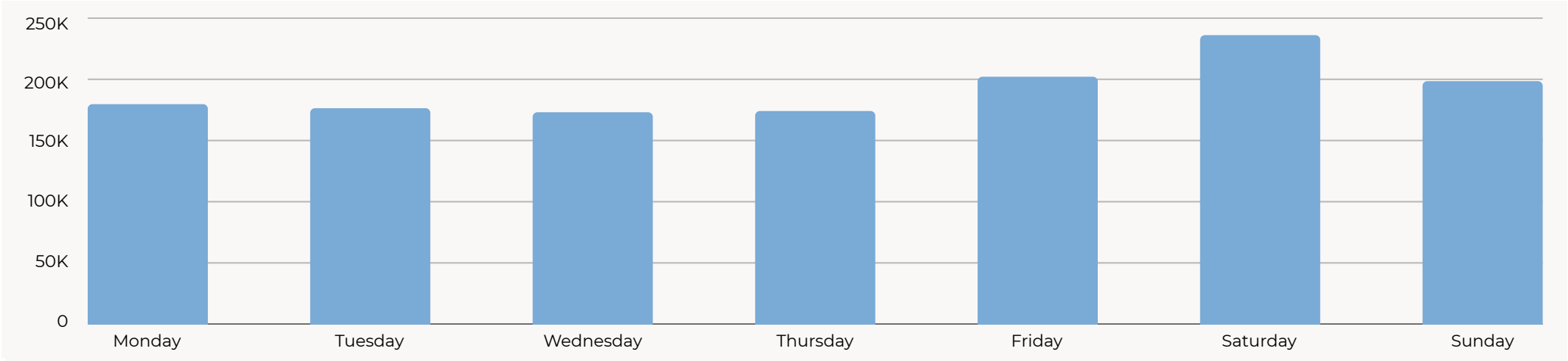
Richland Mall Site Plan & Availabilities

| Unit | Size | Availability |
|------|----------|--------------|
| 600 | 2,267 SF | Now |
| 012 | 1,500 SF | Now |
| 011 | 4,800 SF | Now |

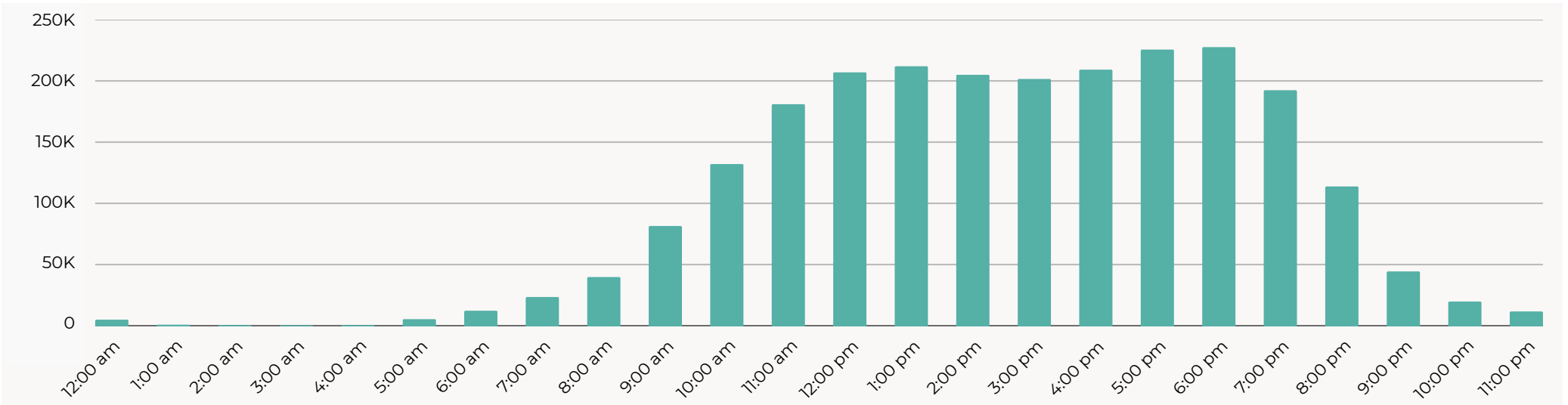


Richland Mall Visits

Daily Visits (12 months)



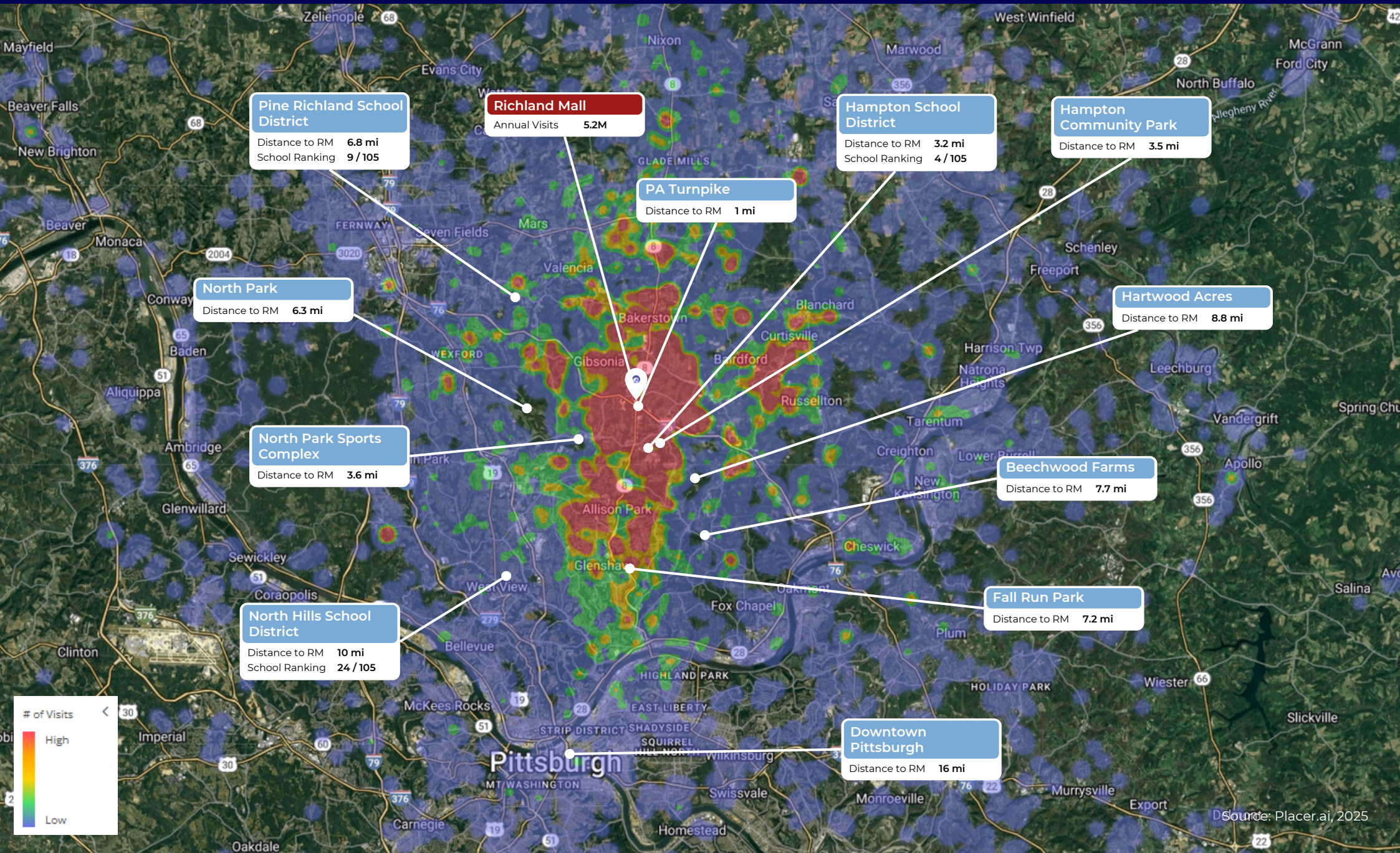
Hourly Visits (12 months)



Richland Mall Trade Area

TA SIZE

85.43 mi²



Contact

Michael Rovitto

Director of Leasing

+1 (412) 394-6857

michael.rovitto@zamagias.com

Austin Abraham

Leasing Associate

+1 (412) 394-6822

austin.abraham@zamagias.com

Noah Zamagias

Leasing Associate

+1 (412) 394-6870

noah.zamagias@zamagias.com

ZAMAGIAS
PROPERTIES

336 Fourth Avenue
Pittsburgh, PA 15222
zamagias.com

