

For Lease

529 West 20th Street, NYC

1st floor, accessible via the 529 Arts lobby

East front portion : 2,262 RSF, east back portion: 1,600 RSF, Total: 3,862 RSF



View looking south, front portion (2,262 RSF)

Best Location in Art Chelsea!

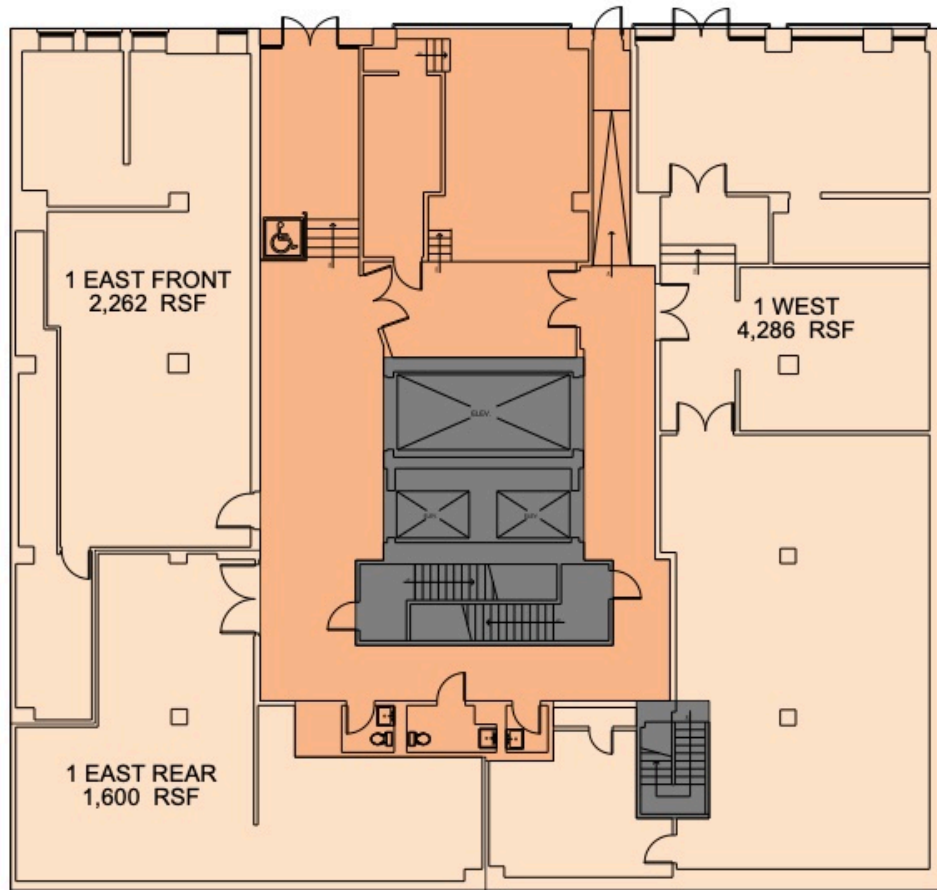
Fully built out exhibition space. Ceiling heights 12', cement floors, HVAC. Front and back can be rented separately or merged into a single space. 30' frontage to the street. Long-term lease desired.

West 20th Street art galleries include: Jack Shainman Gallery, David Kordansky Gallery, Kurimanzutto Gallery, David Zwirner Gallery, Garth Greenan Gallery, Jason Jacques Gallery, Ricco Maresca Gallery, Bruce Silverstein Gallery, Cavin Morris Gallery, Yossi Milo Offices, ACA Galleries, Elizabeth Harris Gallery, Kathryn Markel Gallery, Dean Borghi Gallery, Benrubi Gallery, Bill Hodges Gallery, Roy Lichtenstein Foundation, Leon Polk Smith Foundation and Judith Whitney Godwin Foundation.



Office (south east corner)

529 W 20th St., New York, NY
 Floor 01
 2/1/2023



Non-Rentable Area	Floor Common Area	Building Common Area	Store Area	Office Area	Residential Area	Tenant Storage
811		2,442		5,948		

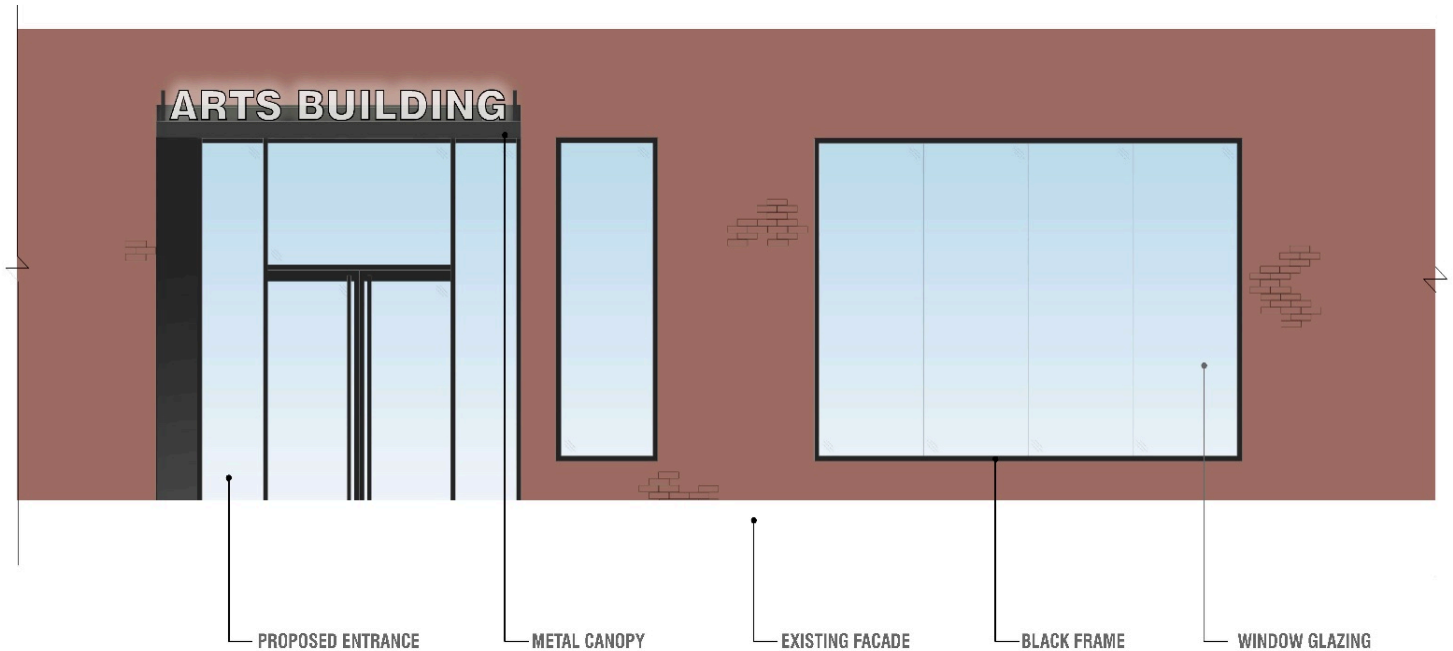


New lobby



Current facade, 30' frontage

2 New facade display windows will be built by the landlord upon lease signing, freshly painted, ready to move in condition, Ceilings are 12' height, cement floors, HVAC. Long-term lease desired.



New lobby and lobby entry

An Exclusive Agency of

Anne-Brigitte Sirois, LEED AP
Principal, Curatorial Development for the Arts

ART STATELLC

396 Bleecker Street, Suite H
New York, NY 10014
Mobile: 917.226.3851

siroisab@artstate.net

www.artstate.net