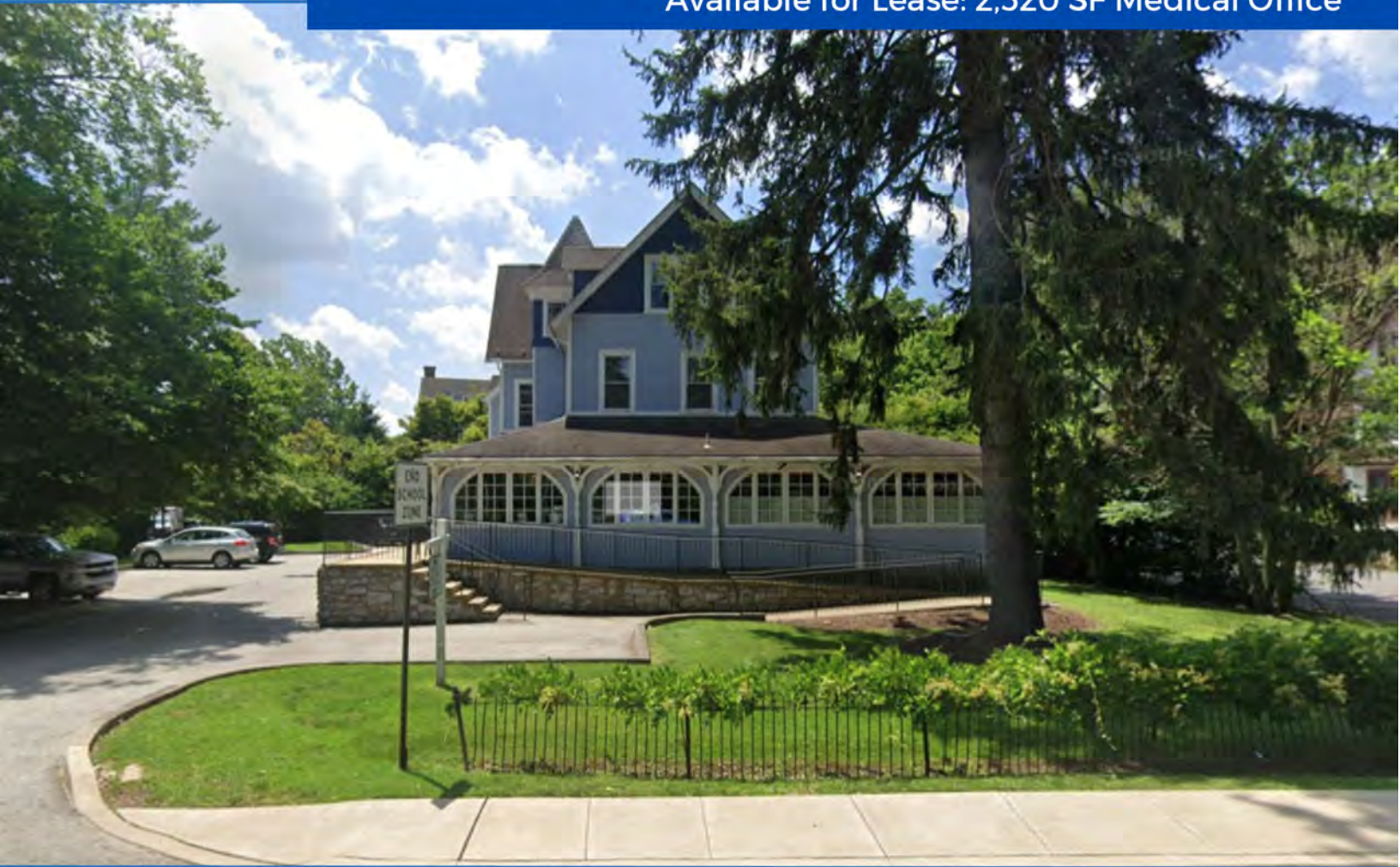


FOR LEASE

First Floor Medical Office
241 S Bryn Mawr Avenue
Bryn Mawr, PA 19010



Available for Lease: 2,520 SF Medical Office



Property Highlights

- 2,520 SF Main Line Office/Medical
- Beautiful Corner Property on S. Bryn Mawr Avenue and Moore Avenue
- 7 Exam Rooms
- 1 Office
- Waiting Room
- Reception Area

Location...Location...Location

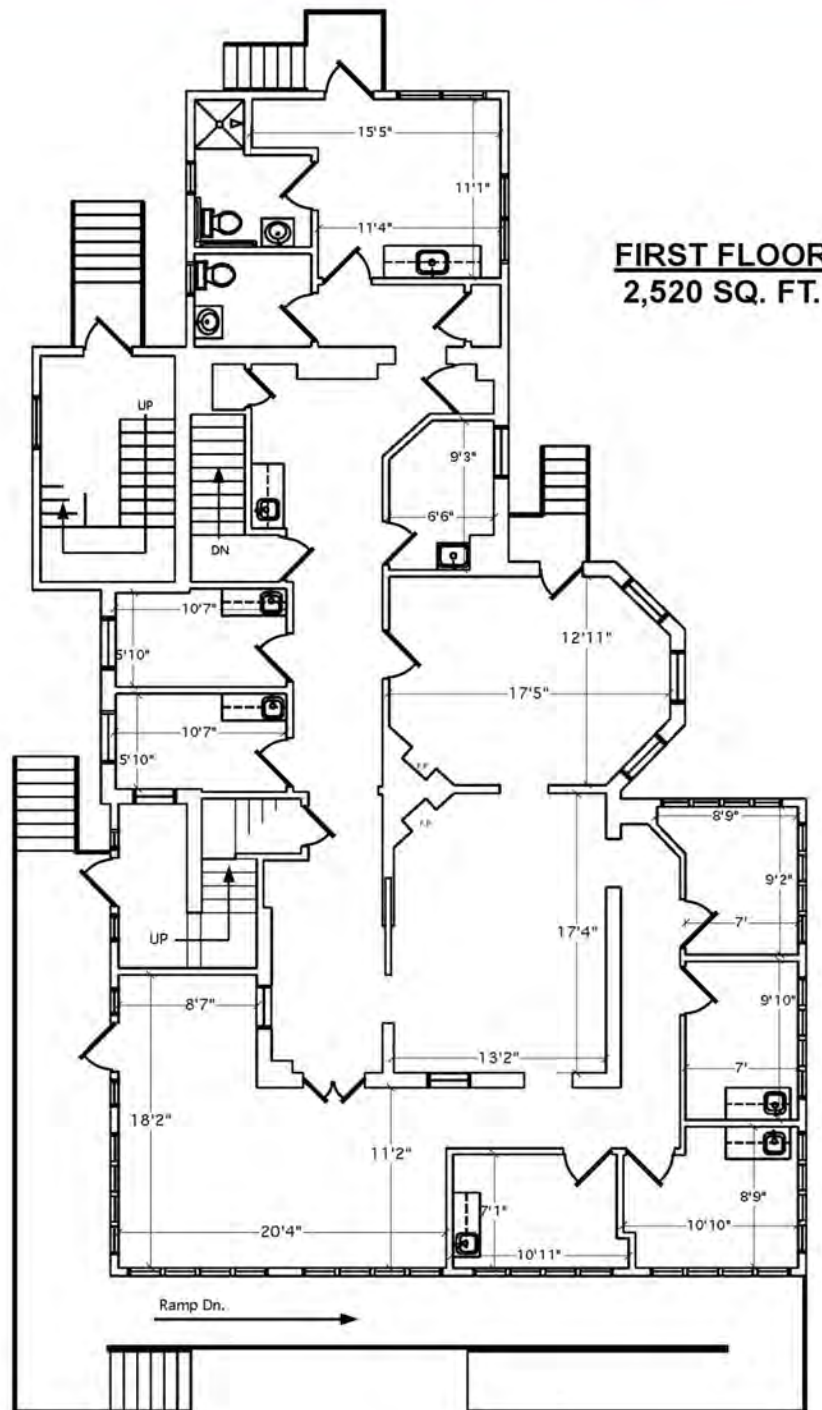
- Easy access to Routes 30 & 476
- 0.5 Miles to Paoli/Thorndale's Regional Rail Bryn Mawr station
- .05 Mile from Bryn Mawr Hospital
- 1 Mile to Harcum College
- 1.7 Miles to Haverford College
- 2 Miles to Villanova University
- 5 Miles to Lankenau Hospital

FOR LEASE

First Floor Medical Office
241 S Bryn Mawr Avenue
Bryn Wawr, PA 19018



Available for Lease: 2,520 SF Medical Office

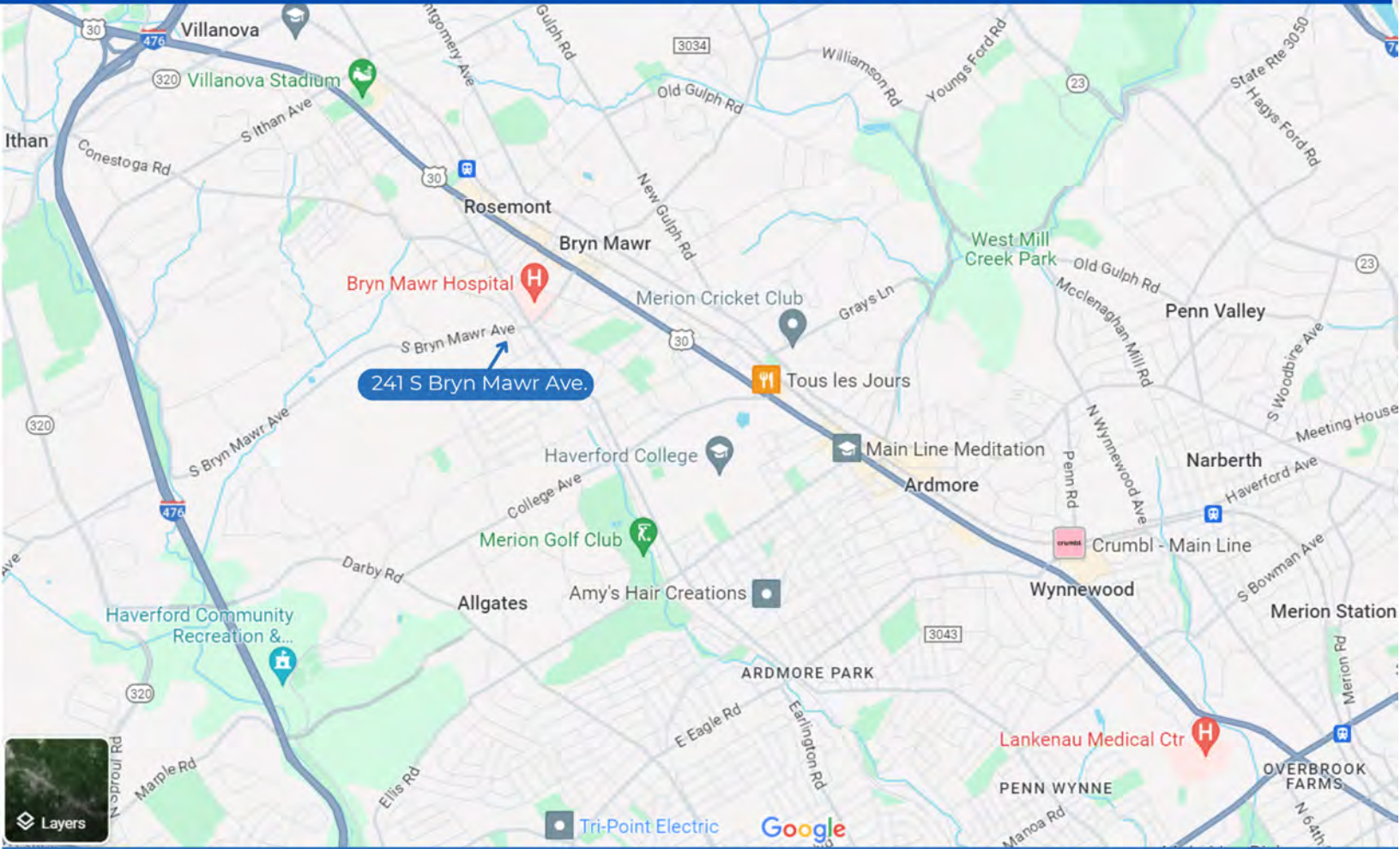


FOR LEASE

First Floor Medical Office
241 S Bryn Mawr Avenue
Bryn Mawr, PA 19018



Available for Lease: 2,520 SF Medical Office



	Population	1 mile	3 mile	5 mile
	Population	13,053	83,511	273,526
	2028 Projection	13,291	85,170	280,089
	Median Age	35	39	40
	Bachelor's Degree or Higher	67%	68%	58%
	Income	1 mile	3 mile	5 mile
	Avg Household Income	\$143,795	\$158,580	\$141,380
	Median Household Income	\$108,902	\$128,773	\$108,336
	Households	1 mile	3 mile	5 mile
	2023	4,944	30,445	104,257
	2028 Projection	5,035	31,115	106,946
	Housing	1 mile	3 mile	5 mile
	Median Home Value	\$587,886	\$468,683	\$394,060
	Median Year Built	1955	1952	1953

FOR LEASE

First Floor Medical Office
241 S Bryn Mawr Avenue
Bryn Wawr, PA 19018



Available for Lease: 2,520 SF Medical Office

