

# 2610 EAST UNIVERSITY DRIVE Mesa | Arizona, 85213



## Property Features

- Freestanding Commercial Building
- Monument Signage Available
- Plentiful Parking (Including Covered)
- Easy Access to the Loop 202 and US 60
- Access to retail and medical amenities

For more information:

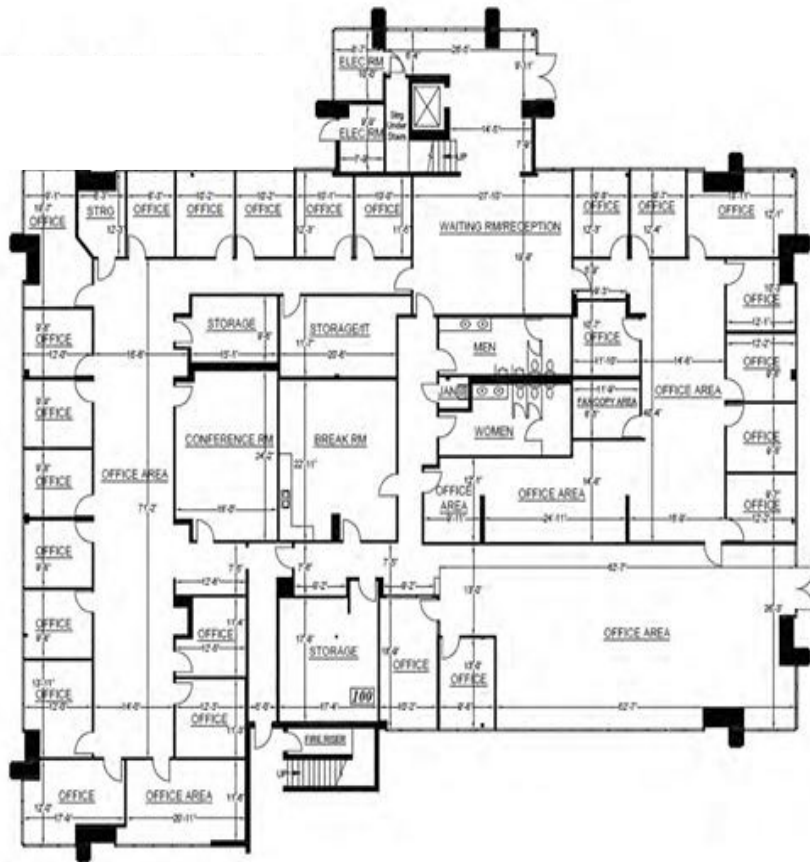
**Michael Crystal**  
Managing Director  
+1 602 229 5857  
[michael.crystal@cushwake.com](mailto:michael.crystal@cushwake.com)

**Ryan Lambeth**  
Associate  
+1 602 468 8570  
[ryan.lambeth@cushwake.com](mailto:ryan.lambeth@cushwake.com)

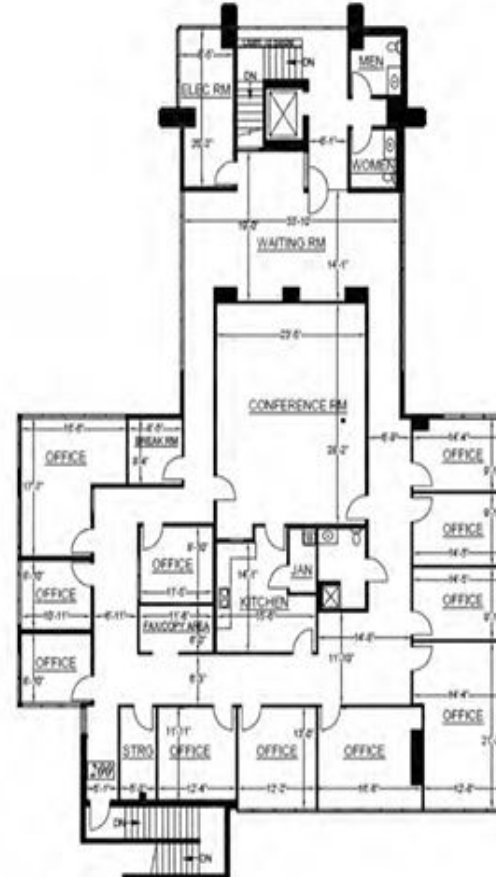
**Devpal Gupta**  
Executive Managing Director  
+602 268 8207  
[devpal.gupta@cushwake.com](mailto:devpal.gupta@cushwake.com)

**Peter Menna**  
Executive Managing Director  
+602 224 4497  
[peter.menna@cushwake.com](mailto:peter.menna@cushwake.com)

## First Floor



## Second Floor



Michael Crystal  
Managing Director  
602 229 5857  
michael.crystal@cushwake.com

Ryan Lambeth  
Associate  
602 468 8570  
ryan.lambeth@cushwake.com

Devpal Gupta  
Executive Managing Director  
+602 268 8207  
devpal.gupta@cushwake.com

Peter Menna  
Executive Managing Director  
+602 224 4497  
peter.menna@cushwake.com



2555 E. Camelback Rd., Suite 400 | Phoenix, Arizona 85016 | ph:+1 602 954 9000 | fx:+1 602 253 0528 | [cushmanwakefield.com](https://www.cushmanwakefield.com)

©2024 Cushman & Wakefield. All rights reserved. The information contained in this communication is strictly confidential. This information has been obtained from sources believed to be reliable but has not been verified. No warranty or representation, express or implied, is made as to the condition of the property (or properties) referenced herein or as to the accuracy or completeness of the information contained herein, and same is submitted subject to errors, omissions, change of price, rental or other conditions, withdrawal without notice, and to any special listing conditions imposed by the property owner(s). Any projections, opinions or estimates are subject to uncertainty and do not signify current or future property performance.