

H I L A N D
C O M M E R C I A L

8251 & 8301 Maryland Ave
Clayton, MO 63105

MARYLAND PARK EAST & WEST

Premier Clayton
Office Space
For Lease

Diemann Sotheby's
INTERNATIONAL REALTY

8

3

0

1

PROPERTY HIGHLIGHTS

Building and Monument signage available

Reserved covered parking at \$75/space/month

Walking distance to restaurants and Straubs

Excellent congestion-free access

Outside patios and garden area

Tenant vending/lounge area

Furniture available

MARYLAND PARK EAST (8251 Maryland Ave)

3-story 55,165 sf building with a Garden Level

1,325 - 5,683 RSF Available

MARYLAND PARK WEST (8301 Maryland Ave)

3-story, 50,400 sf building

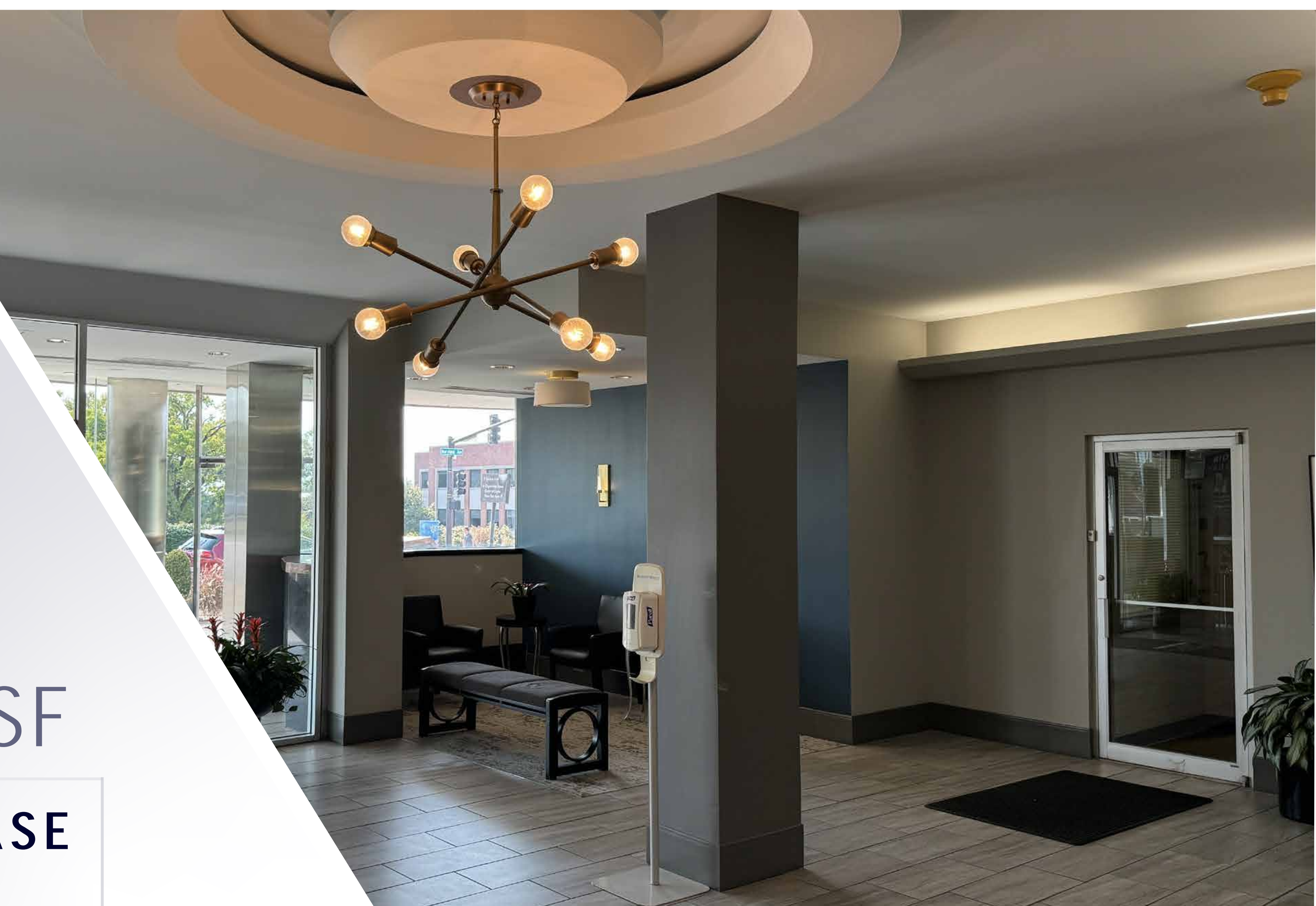
1,776 - 26,521 RSF Available

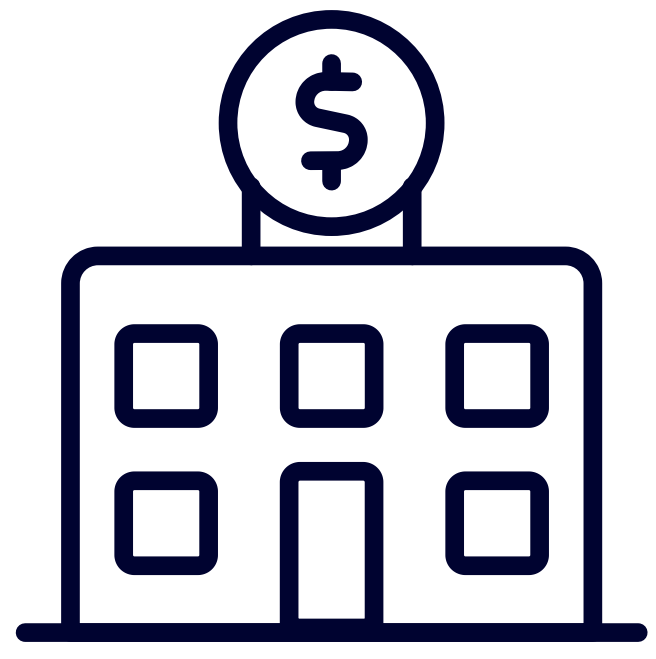




1,325 up to 26,521 RSF

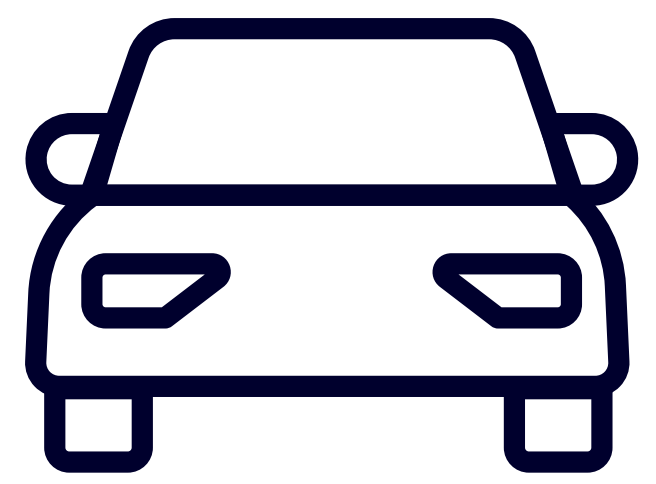
FOR LEASE





\$24.50

PSF FULL-SERVICE

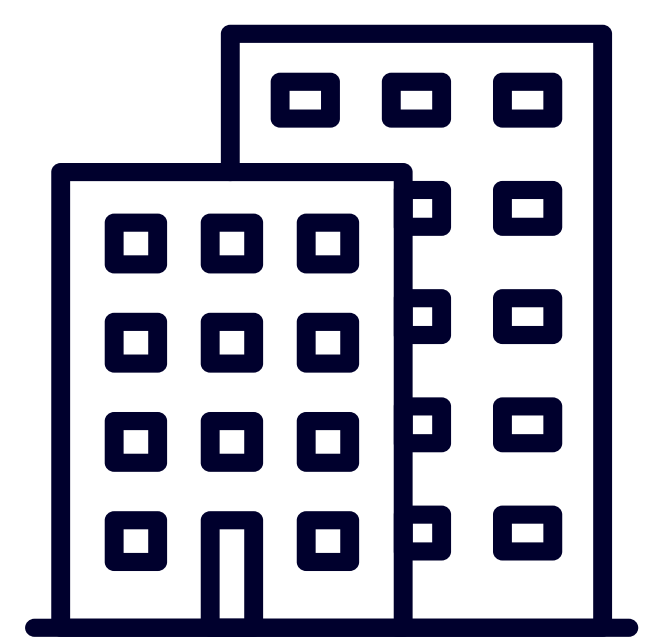


2

MINUTES TO I-170

3

FLOORS

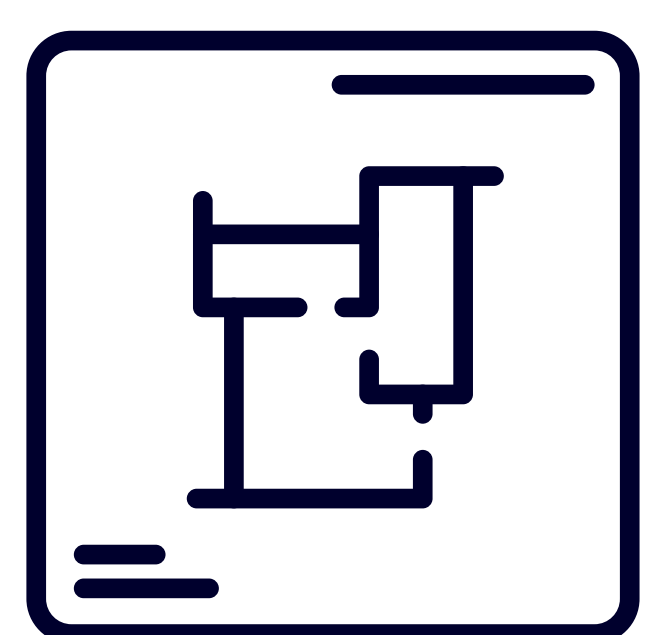


A

CLASS BUILDING

SIGN

OPPORTUNITY

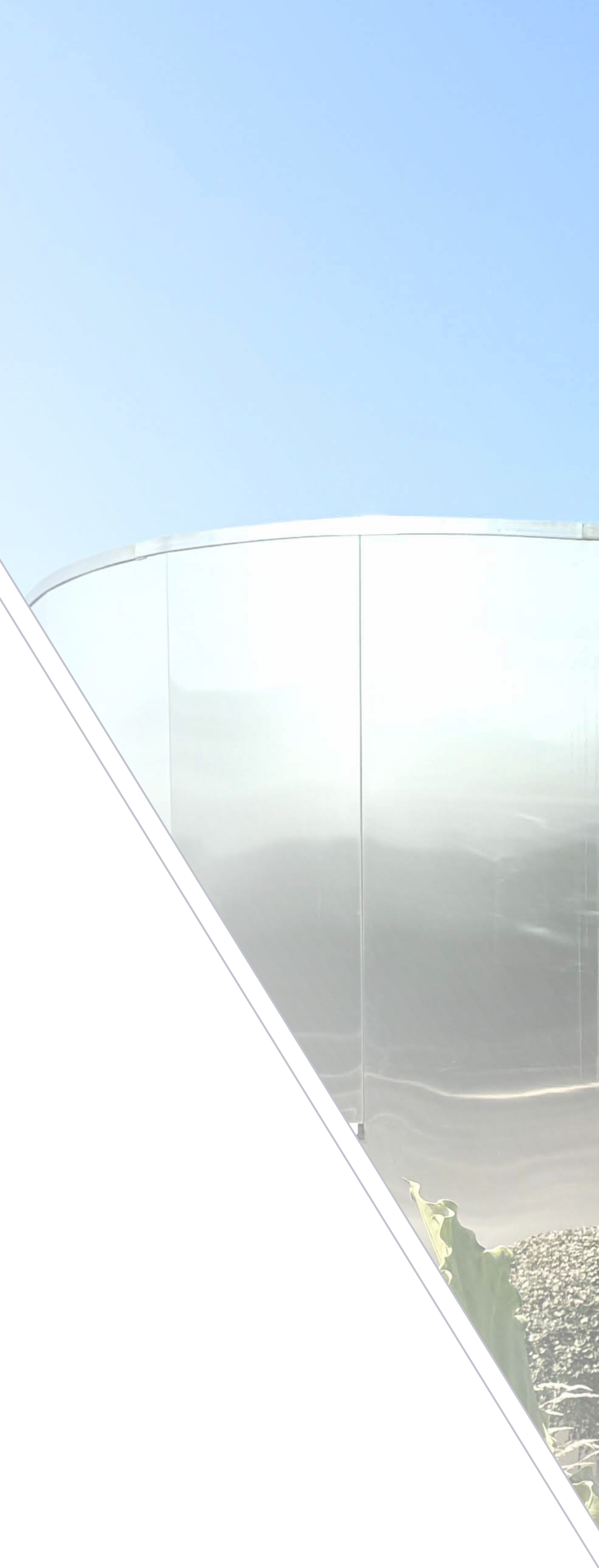


1,325

SF MIN AVAILABLE

26,521

SF MAX COMBINED





8201
MARYLAND

Dielmann Sotheby's
INTERNATIONAL REALTY

LUXE TITLE

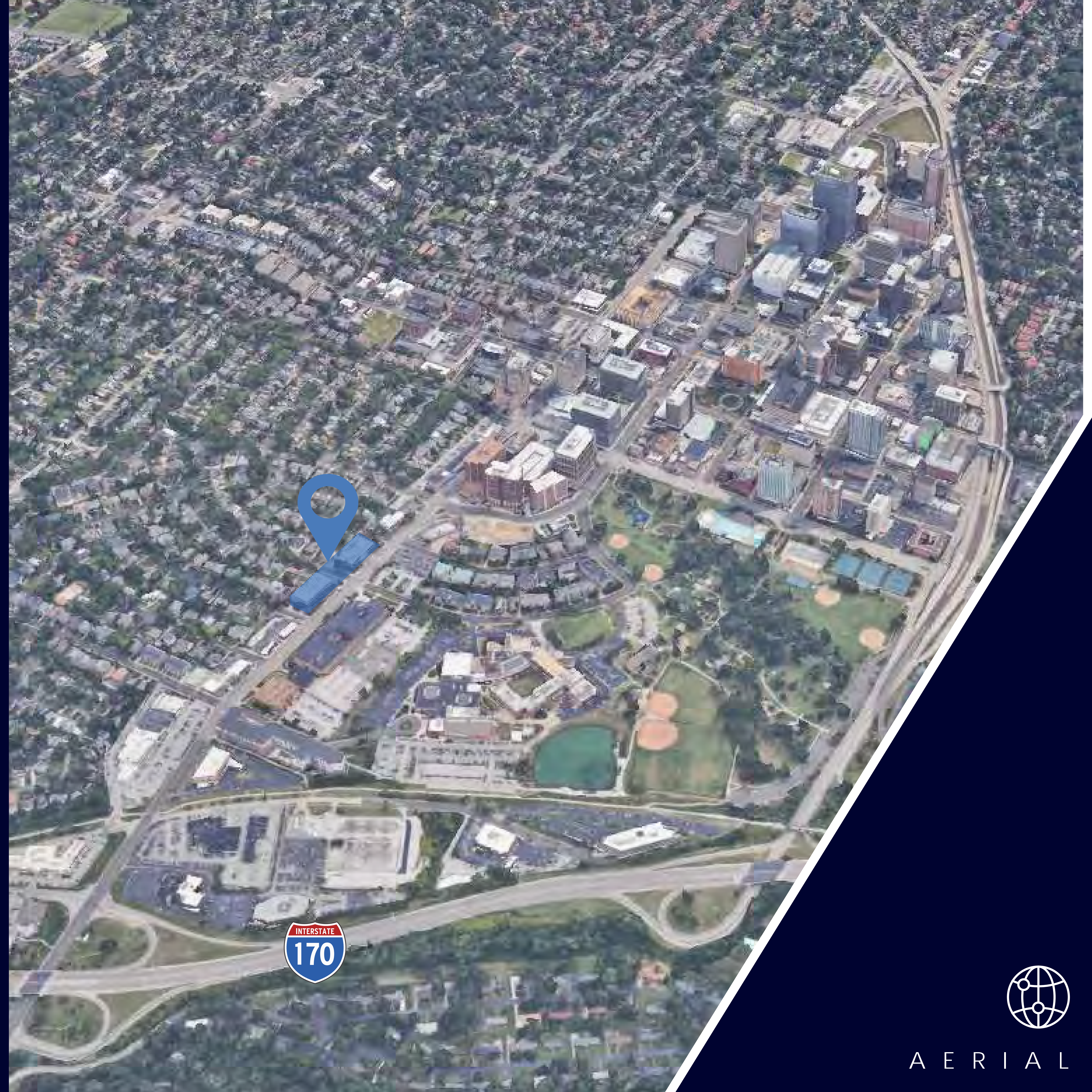
Sunpointe
Investments

LOCATION



Lorem ipsum





A E R I A L



8251 & 8301 Maryland Ave
Clayton, MO 63105

For Additional Information, Please Contact

PAM HINDS

phinds@hilandcommercial.com

314.802.6226 x2

12412 POWERSCOURT DR

ST. LOUIS, MO 63131

WWW.HILANDCOMMERCIAL.COM

H I L A N D
C O M M E R C I A L