



# BRIGHT AND CREATIVE OFFICE SPACE IN WEST BERKELEY'S DESIGN LOOP



Elegant and nicely maintained building featuring a renovated entrance, high ceilings, parking and ADA access.

## 2530 San Pablo Avenue Berkeley California

**Colby Katz**

510 450 1420

[ckatz@mrecommercial.com](mailto:ckatz@mrecommercial.com)

DRE LIC# 01949015

### Property Highlights:

- Charming well-maintained building
- Next to many great eateries, such as, [Lao Garden](#), [Cafe Chiave](#) and [Anchalee Thai Cuisine](#)
- Onsite parking in gated lot available
- One block from new Kaiser Permanente office project, in [West Berkeley's Design Loop](#)
- Heating and A/C throughout building
- Spaces available sizing from ±450 SF to ±2,154 SF
- Layouts ranging from complete open plan to four private offices
- Units can be delivered turn-key

[Suite B: ±1,298 SF - \\$3,500](#)

[Suite G: ±905 SF - \\$2,500](#)

[Suite K: ±1,704 SF - \\$5,000](#)

[Suite L: ±450 SF - \\$1,500](#)

**RATES ARE MONTHLY  
FULL SERVICE**

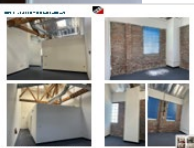
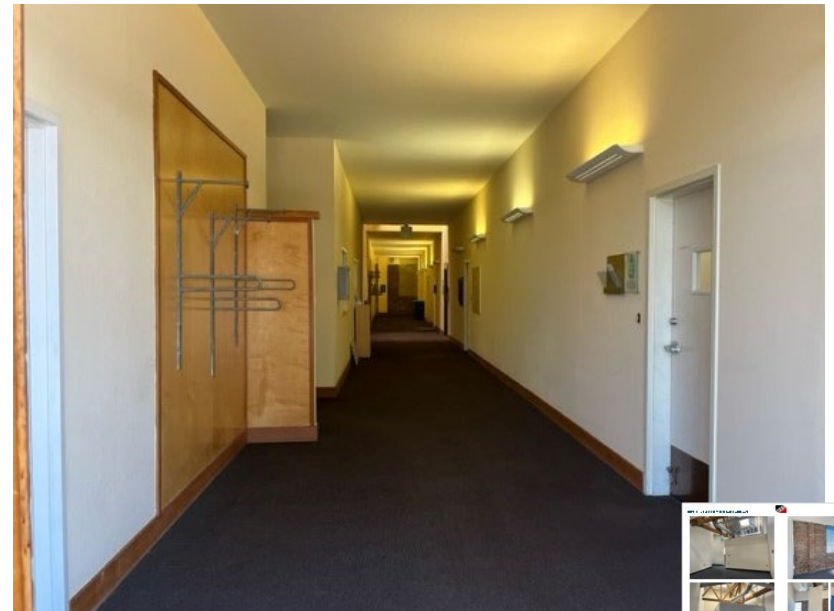


# FRONTAGE AND PARKING – 2530 SAN PABLO AVE

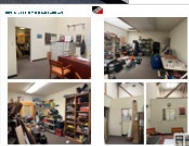
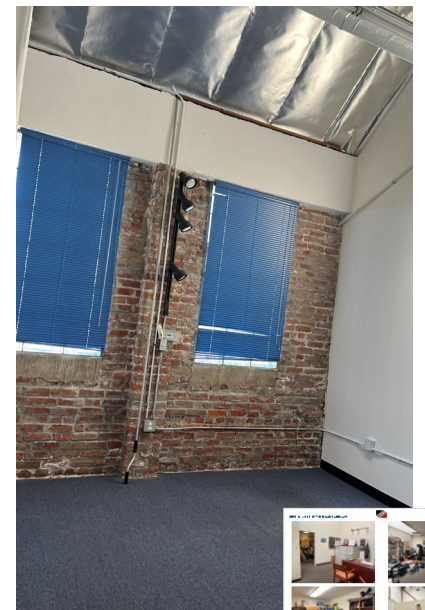


All information herein is offered in good faith and deemed accurate, but not guaranteed.

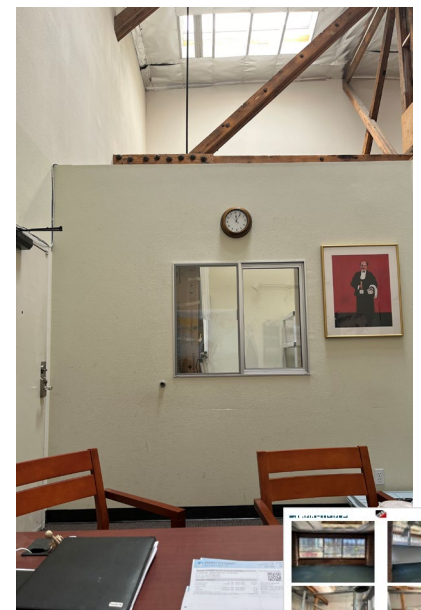
COMMON AREAS – 2530 SAN PABLO AVE



SUITE B: ±1,298 SF – 2530 SAN PABLO AVE



SUITE G: ±905 SF – 2530 SAN PABLO AVE



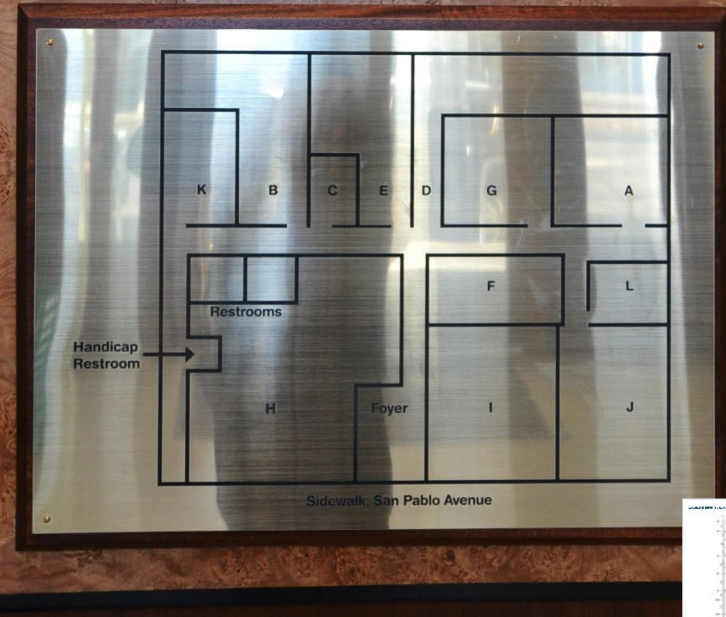
SUITE K: ±1,704 SF – 2530 SAN PABLO AVE



SUITE L: ±450 SF + TENANT DIRECTORY – 2530 SAN PABLO AVE



• Seeds Community Resolution Center	Suite A
• American Nonsmokers' Rights Foundation	Suite B, J
• Yoga Room	Suite D
• Centro Latino	Suite E
• League of Women Voters	Suite F
• Golden Gate Audubon Society	Suite G
• Ecology Center	Suite H
• Sierra Club	Suite I
• Seneca	Suite K
• Juniper Tree Soaps, LLC	Suite L



AVAILABLE SUITES: B, G, K, L – 2530 SAN PABLO AVE

