

# 2WC

TWO WISCONSIN CIRCLE





# CIRCLING BACK TO CHEVY CHASE'S TOP OFFICE

**2 Wisconsin Circle** presents the best work-life balance for today's workforce. Offering premier office and medical spaces in an unmatched location adjacent to **everything** - Metro, shopping, dining, tenant-only amenities and more. Shake up your day at the office and enjoy thriving in this lively, 24/7 spot.

**235K SF**  
CLASS A OFFICE & MEDICAL

**13**  
STORIES

**18K SF**  
FLOOR PLATES

 TOP TWO FLOORS AVAILABLE

 MOVE-IN READY SPACES

 FITNESS CENTER

 TENANT AMENITY LOUNGE AND CONFERENCE CENTER

 2/1,000 SF GARAGE AND SURFACE PARKING

 ATOP FRIENDSHIP HEIGHTS METRO



# STEP INTO YOUR NEIGHBORHOOD

## CHEVY CHASE PAVILION

Cheesecake Factory  
Embassy Suites  
Sunrise News Stand  
T-Mobile

DePandi  
Hunter's Hound  
Joy by Seven Reasons  
Junction's Bistro, Bar & Bakery  
Luxoptics  
Merritt Gallery  
Potomac Pizza  
Red Panda Art Studio  
Renaldi Dental Arts  
Saks Fifth Avenue  
Salon Lofts  
Sushiko  
Tiffany & Co.  
Westwood Cleaners  
Whyte House Monograms  
Zen Accupressure

## THE COLLECTION

Amazon Fresh  
Arthur Murray Dance Studio  
Capital Laser & Skin Care  
Capital One Bank  
Chevy Chase Florist  
Clyde's  
Compass

## THE SHOPS AT WISCONSIN PLACE

AcquaLuxe Nails Spa  
Bloomingdale's  
The Capital Grille  
Cole Haan  
Eileen Fisher  
J. Jill  
Le Pain Quotidien  
Lia's  
Nina McLemore  
RTR Pilates  
Sephora  
Tabandeh  
Talbots  
Whole Foods



FRIENDSHIP HEIGHTS METRO STATION

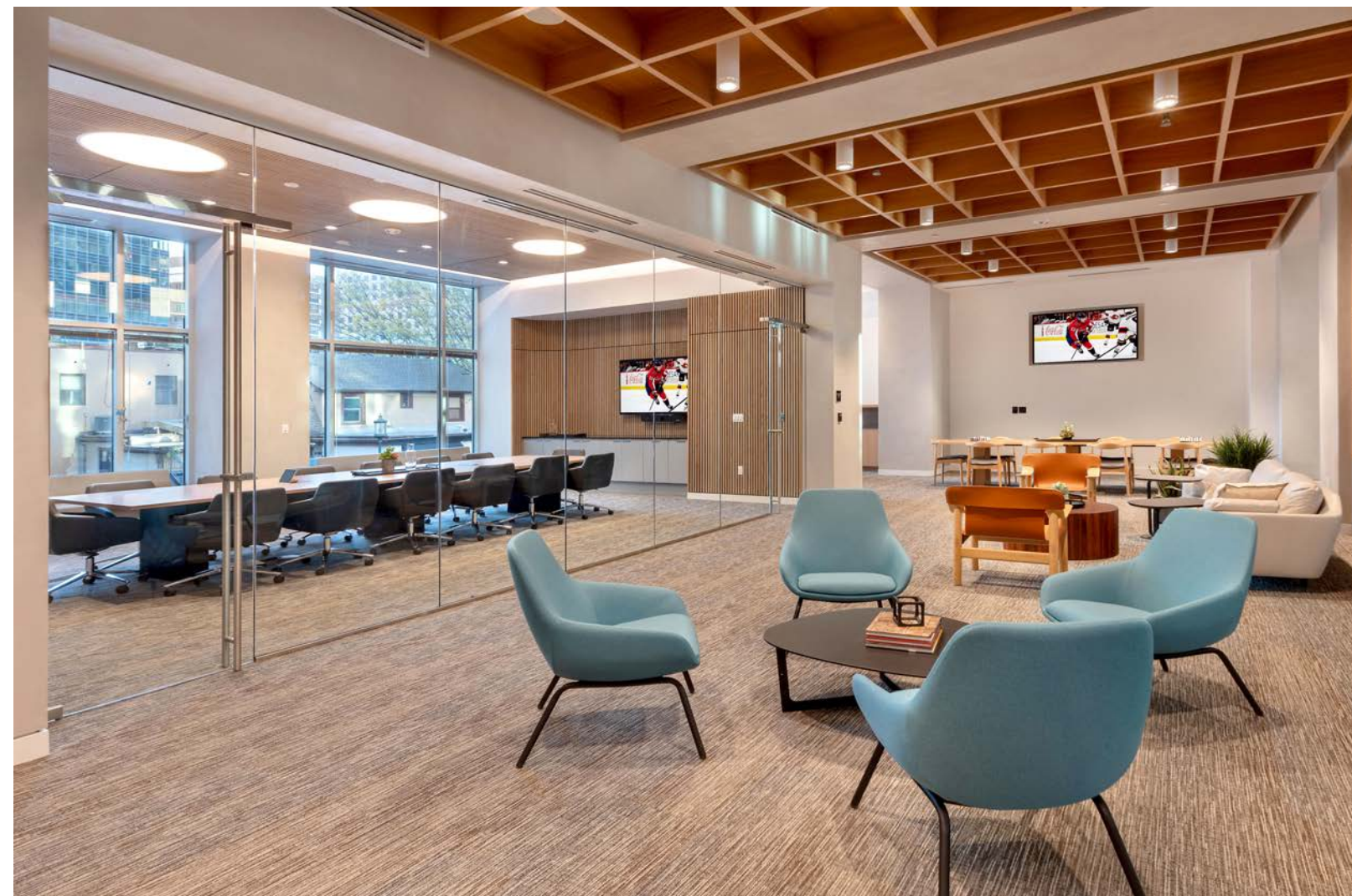
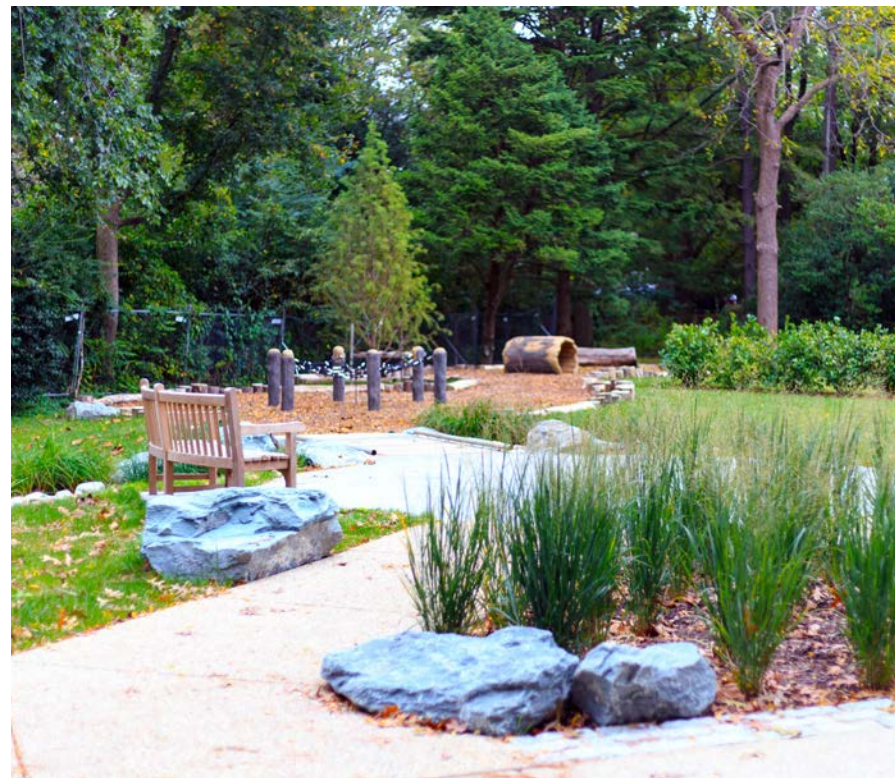


ENJOY TIME OUTSIDE AT ONE OF FOUR NEARBY PARKS:

Western Grove Urban Park, Johnston Park, Farr Park And The Green



# YOUR DAY IN BALANCE



# BUILDING AMENITIES



  
RENOVATED LOBBY



COMMUNITY ACTIVATIONS



WORKPLACE AMENITIES

  
OUTDOOR WORK & COLLABORATION SPACE



WALL OF WINDOWS & AMPLE NATURAL LIGHT



LOUNGE AREA



STATE-OF-THE-ART MACHINES



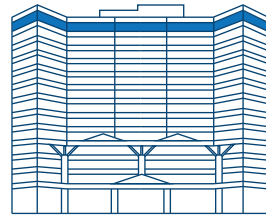
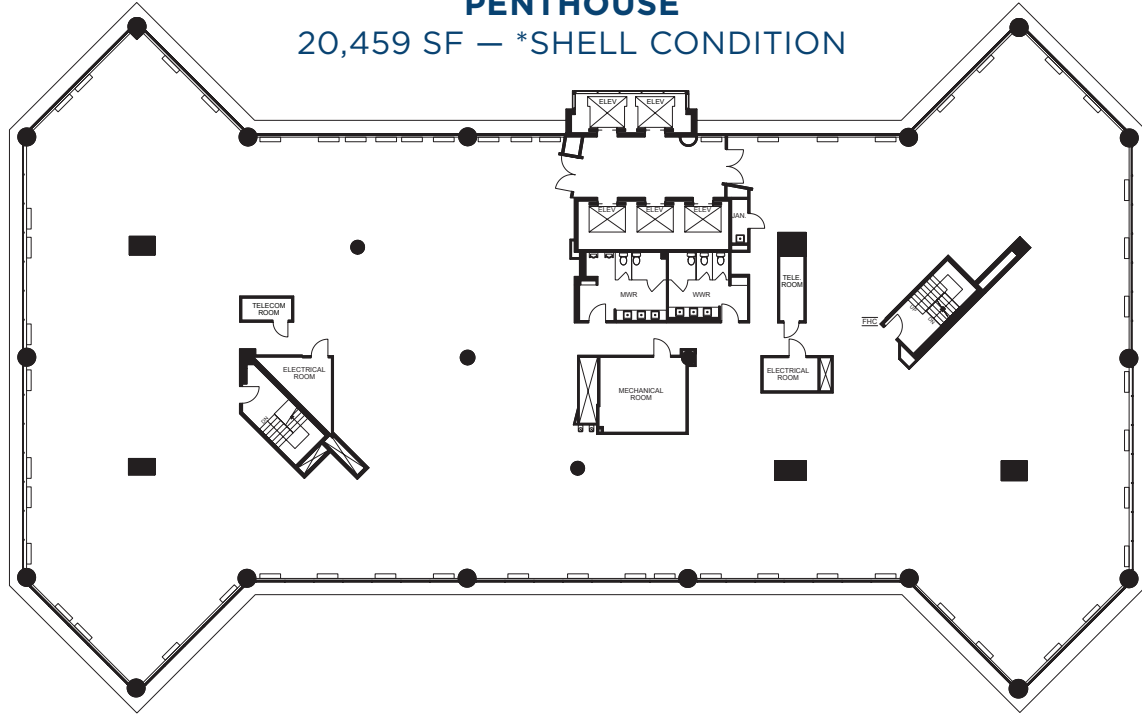
TOWELS PROVIDED

FITNESS & WELLNESS

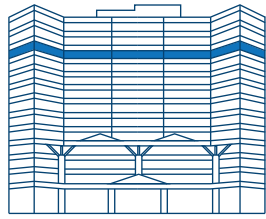
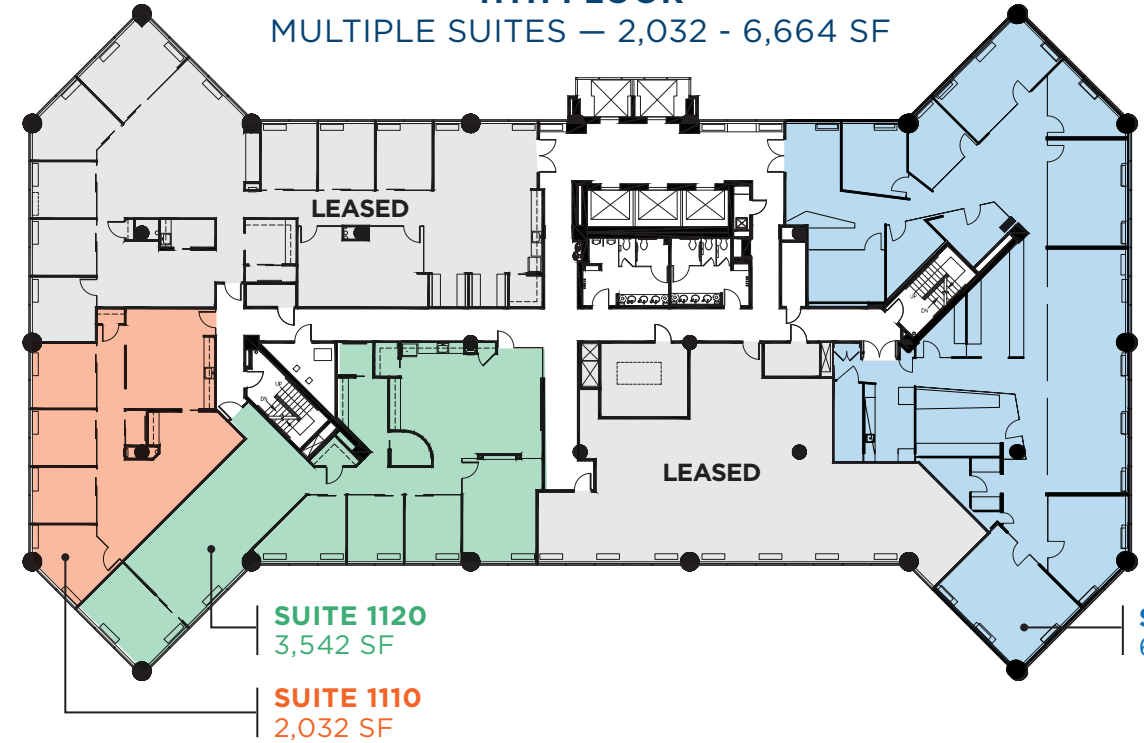
**40,000 SF**  
**TOP FLOOR OPPORTUNITIES**  
2 FLOORS CONTIGUOUS



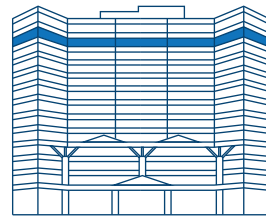
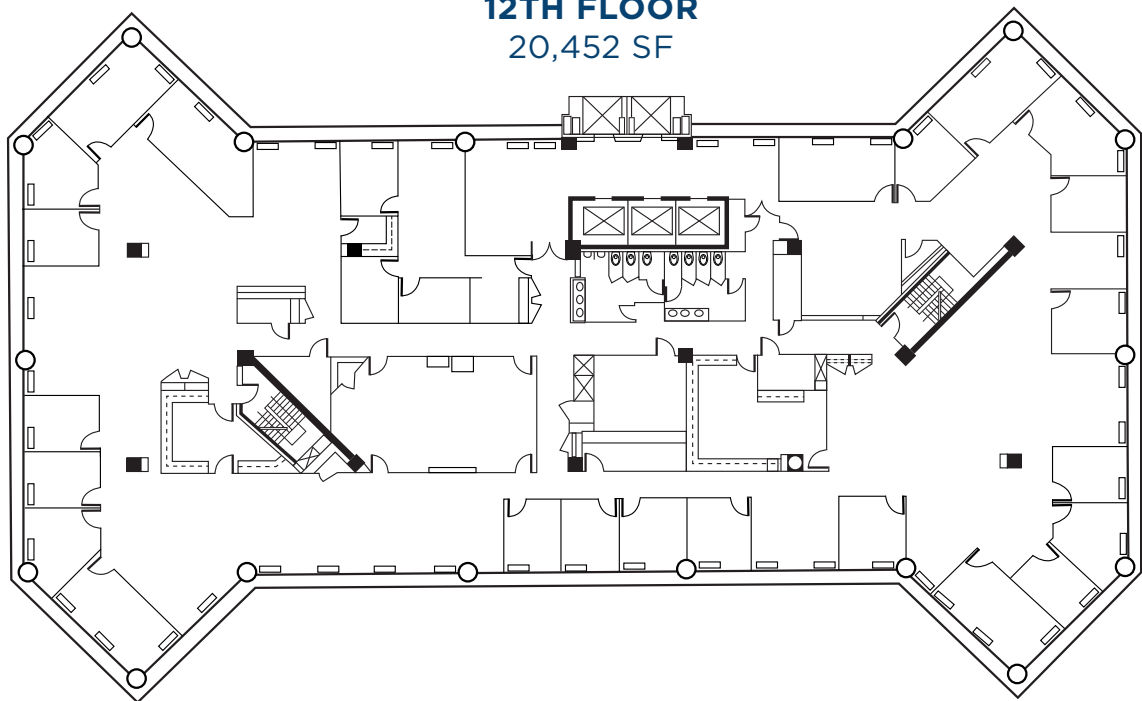
**PENTHOUSE**  
20,459 SF — \*SHELL CONDITION



**11TH FLOOR**  
MULTIPLE SUITES — 2,032 - 6,664 SF



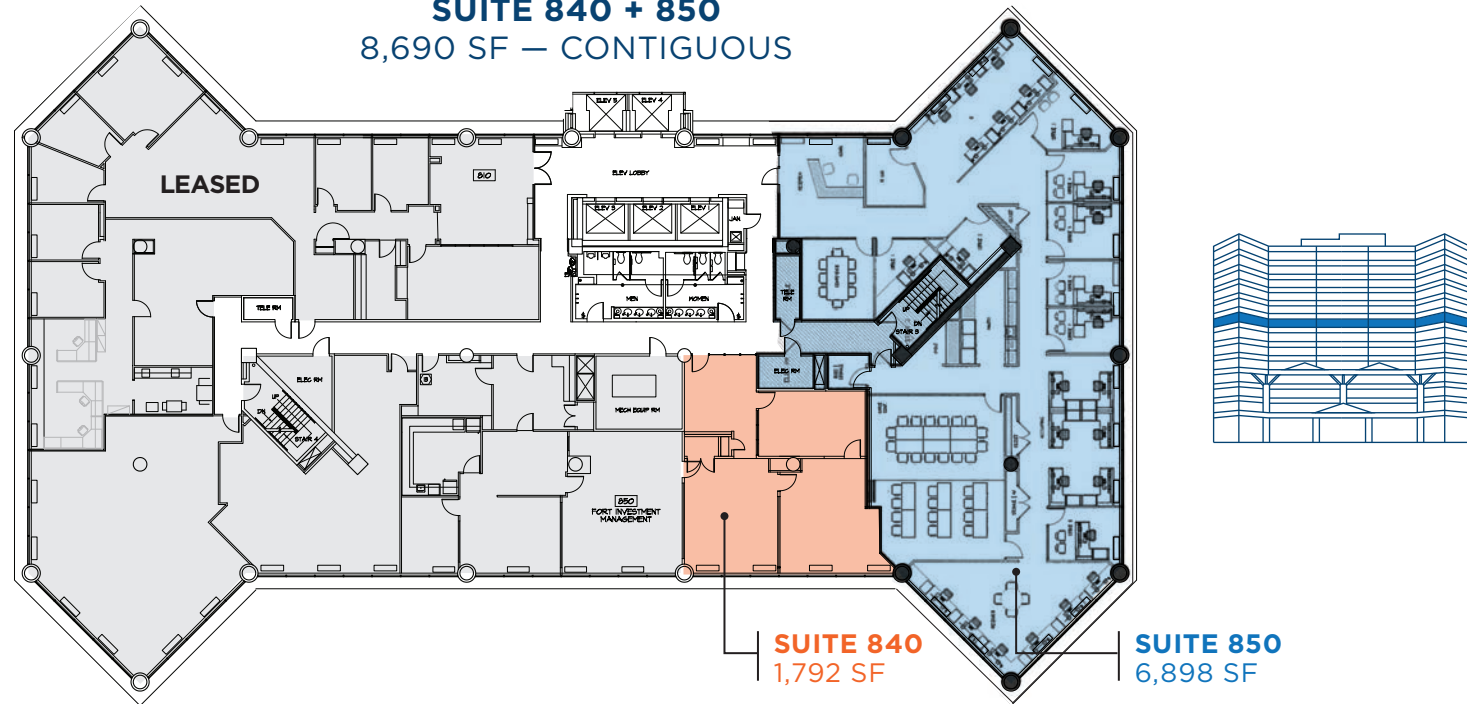
**12TH FLOOR**  
20,452 SF



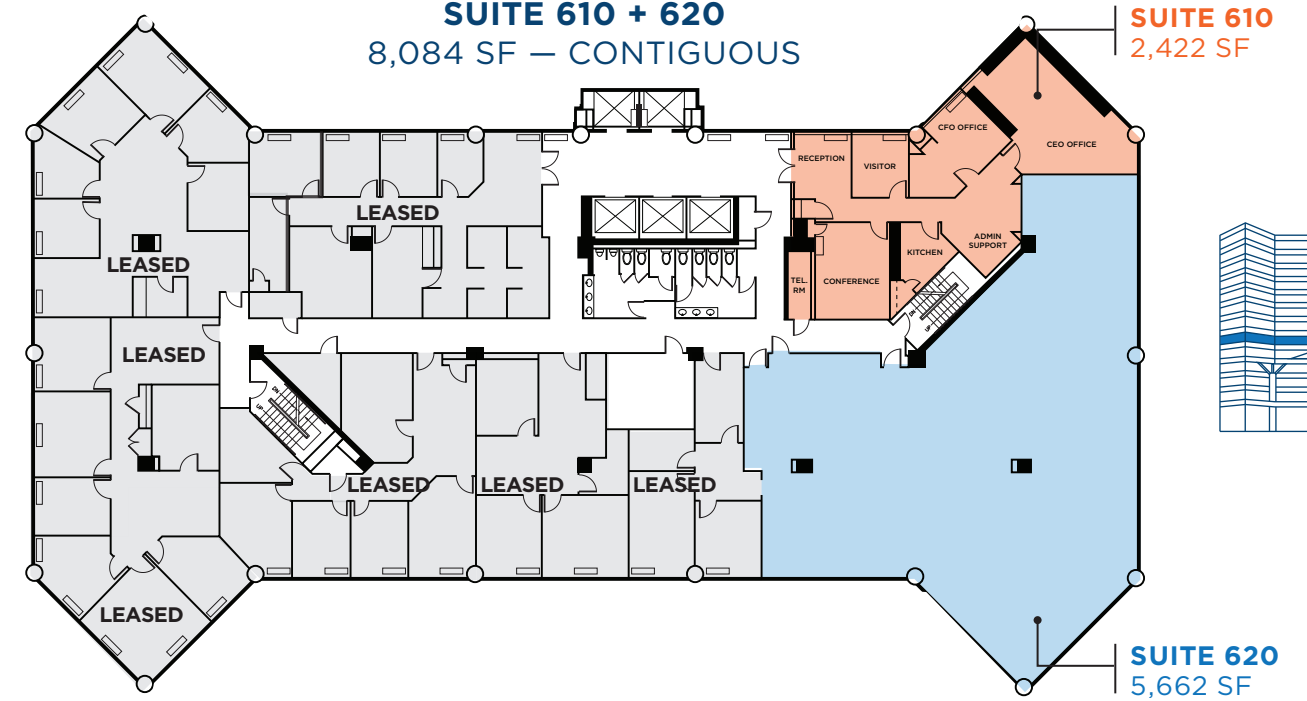
**BRAND NEW OFFICE SPEC SUITES**



**8TH FLOOR**  
**SUITE 840 + 850**  
8,690 SF – CONTIGUOUS



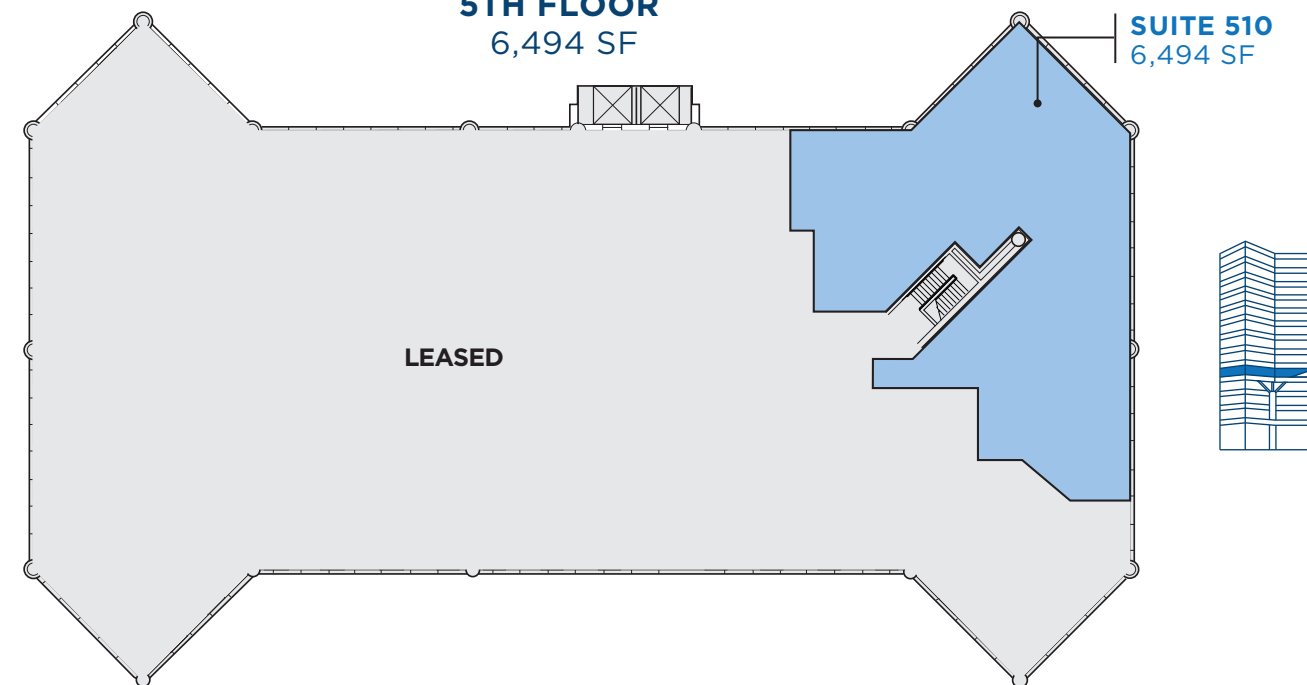
**6TH FLOOR**  
**SUITE 610 + 620**  
8,084 SF – CONTIGUOUS



**BRAND NEW SPEC SUITES**



**5TH FLOOR**  
6,494 SF



THE CHEVY CHASE  
**LAND COMPANY**



Since 1890, The Chevy Chase Land Company (CCLC) has owned, managed and developed exceptional office, retail and residential properties throughout the Washington, D.C. region. CCLC is committed to continuing our proud tradition of leading the region's transit-oriented developments while taking a collaborative, community-first approach to investing in our local neighborhoods.







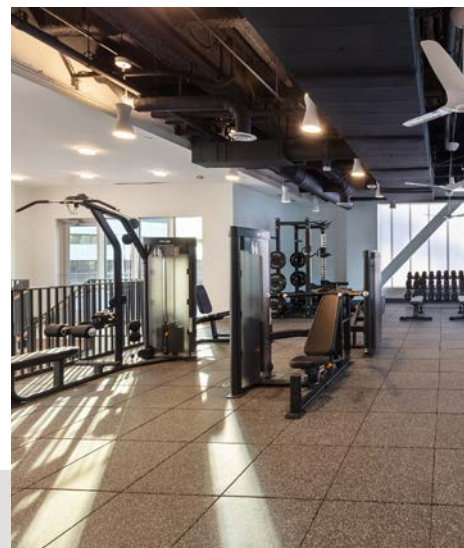
## elevate every day

Ascend, created by The Chevy Chase Land Company, is a shared amenity program designed to enhance the work environment and provide convenient access to various amenities and experiences across the DC metro area.

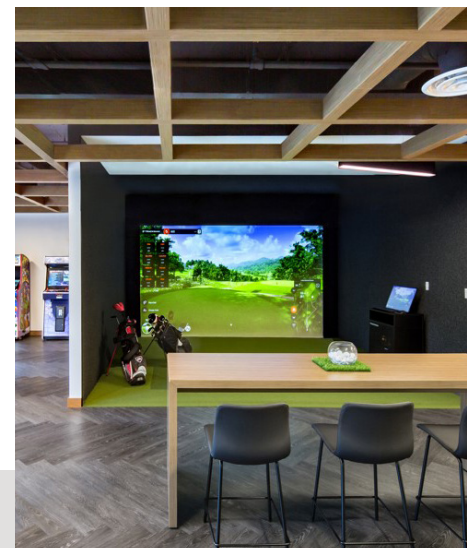
With Ascend, employees have access to a variety of events and environments that promote creativity, wellness, and collaboration. From state-of-the-art fitness centers to tranquil rooftop retreats, every aspect of Ascend spaces are crafted to elevate the team's performance and enjoyment within—and outside of—the office. Powered by the CBRE Host app, Ascend provides workspaces that are more than just places to work.



**WORKPLACE AMENITIES**



**FITNESS & WELLNESS**



**COMMUNITY ACTIVATIONS**



### 2 wisconsin circle

- New Fitness Center with Pelotons
- Outdoor Seating
- Host Concierge Services
- Seasonal Community Events



### 5425 wisconsin avenue

- Conference Center with 60-Person Training Room
- Tenant Lounge with Golf Simulator
- Fitness Center
- Outdoor Seating
- Host Concierge Services
- Seasonal Community Events



### 2 bethesda metro

- 20-Person Conference Room
- Tenant Lounge with Pool Table
- Fitness Center with Yoga Room and Pelotons
- Expansive Rooftop Terrace
- Host Concierge Services



**5471 wisconsin ave**



**8401 connecticut ave**

# Enhancing the workplace experience

Seamlessly connect with properties in The Chevy Chase Land Company portfolio through Host.



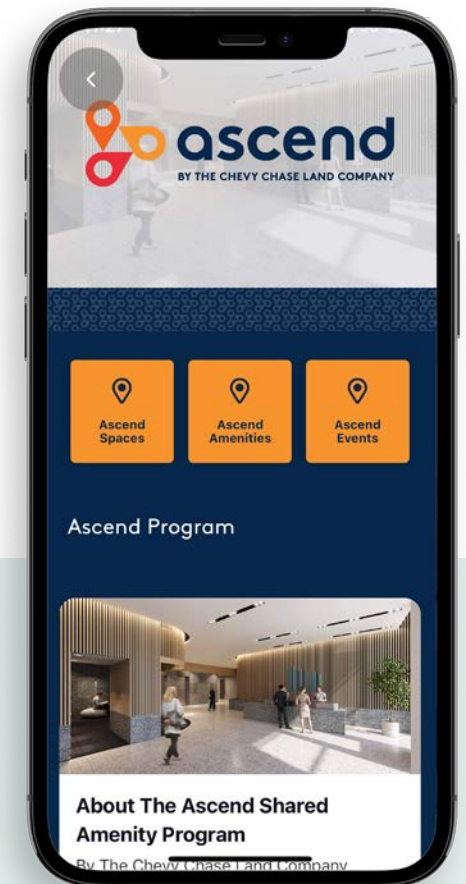
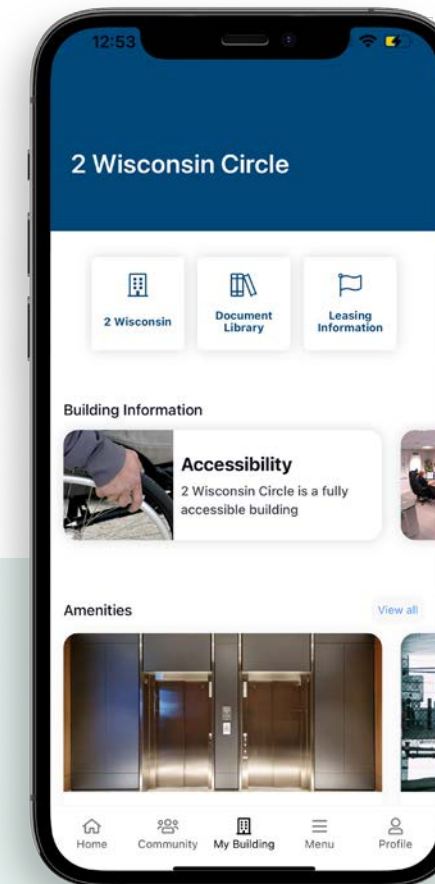
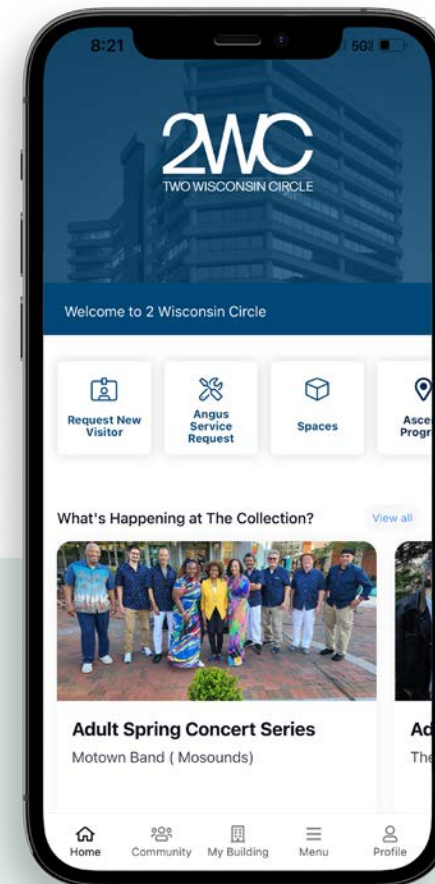
Host, from CBRE, is an enterprise-grade platform and mobile app that connects workplace spaces, services, amenities and building systems through an intuitive, hospitality-driven interface. Driven by people and technology at 2 Bethesda Metro, 2 Wisconsin Circle and 5425 Wisconsin Avenue, Host helps transform the workplace to help people perform, collaborate, and thrive.



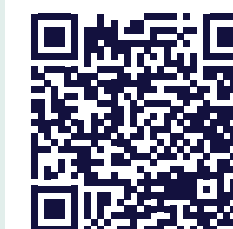
+



+



Click or Scan to Learn More About CBRE Host



Click or Scan to Learn More About 2 Wisconsin Circle

# 2WC

TWO WISCONSIN CIRCLE

**DANNY SHERIDAN**  
danny.sheridan@jll.com

**ANDY THAU**  
andy.thau@jll.com

**ALDEN STABB**  
alden.stabb@jll.com

**CONN CURRY**  
conn.curry@jll.com

**+1 301 287 9950**

