

CANYONVIEW ON 12TH

MW

FOR SALE OR LEASE



PROPERTY DETAILS

1159 EAST 12TH STREET, OGDEN, UTAH 84404

SALE PRICE: \$3,100,000 (\$230.76/SF)

LEASE RATE: CONTACT BROKER

- Building size: 13,434 SF (may be demised)
- 5.88 parking stalls per 1,000 SF
- 1.55 acres
- Medical/general office allowed
- Existing medical improvements in place
- Generous tenant improvement monies available
- New HVAC systems installed in 2023/2024
- Built in 1997

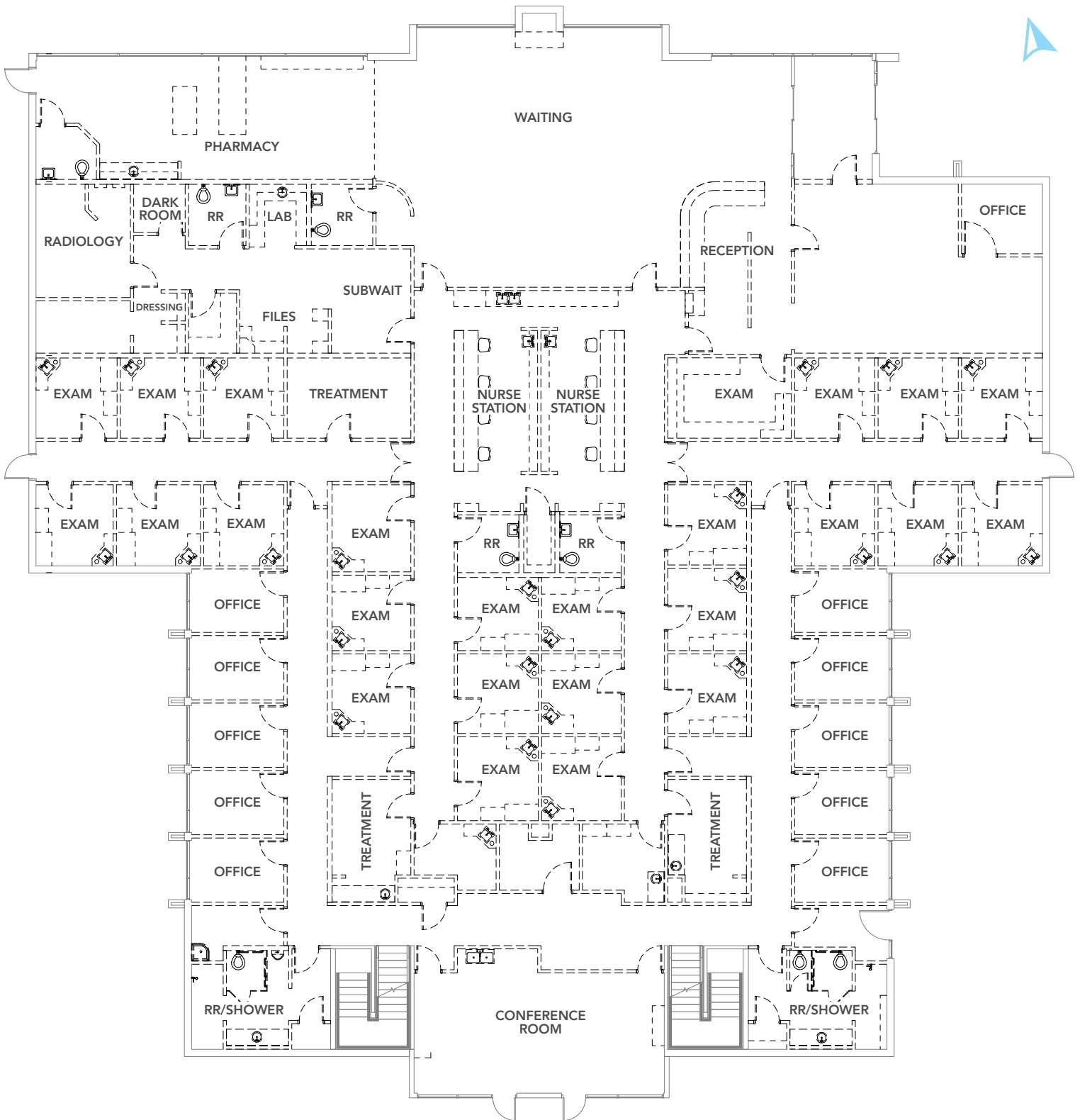


MOUNTAIN WEST
COMMERCIAL REAL ESTATE

CHRIS FALK, CCIM, SIOR
cfalk@mwcre.com
direct 385.429.5500
[View Profile](#)

BRAXTON WILLIE, CCIM
bwillie@mwcre.com
direct 385.429.5501
[View Profile](#)

**FULL SERVICE
COMMERCIAL REAL ESTATE**
1755 East 1450 South
Clearfield, UT 84015
Office 801.578.5580
www.mwcre.com



MOUNTAIN WEST
COMMERCIAL REAL ESTATE

CHRIS FALK, CCIM, SIOR
cfalk@mwcre.com
direct 385.429.5500
[View Profile](#)

BRAXTON WILLIE, CCIM
bwillie@mwcre.com
direct 385.429.5501
[View Profile](#)

**FULL SERVICE
COMMERCIAL REAL ESTATE**
1755 East 1450 South
Clearfield, UT 84015
Office 801.578.5580
www.mwcre.com

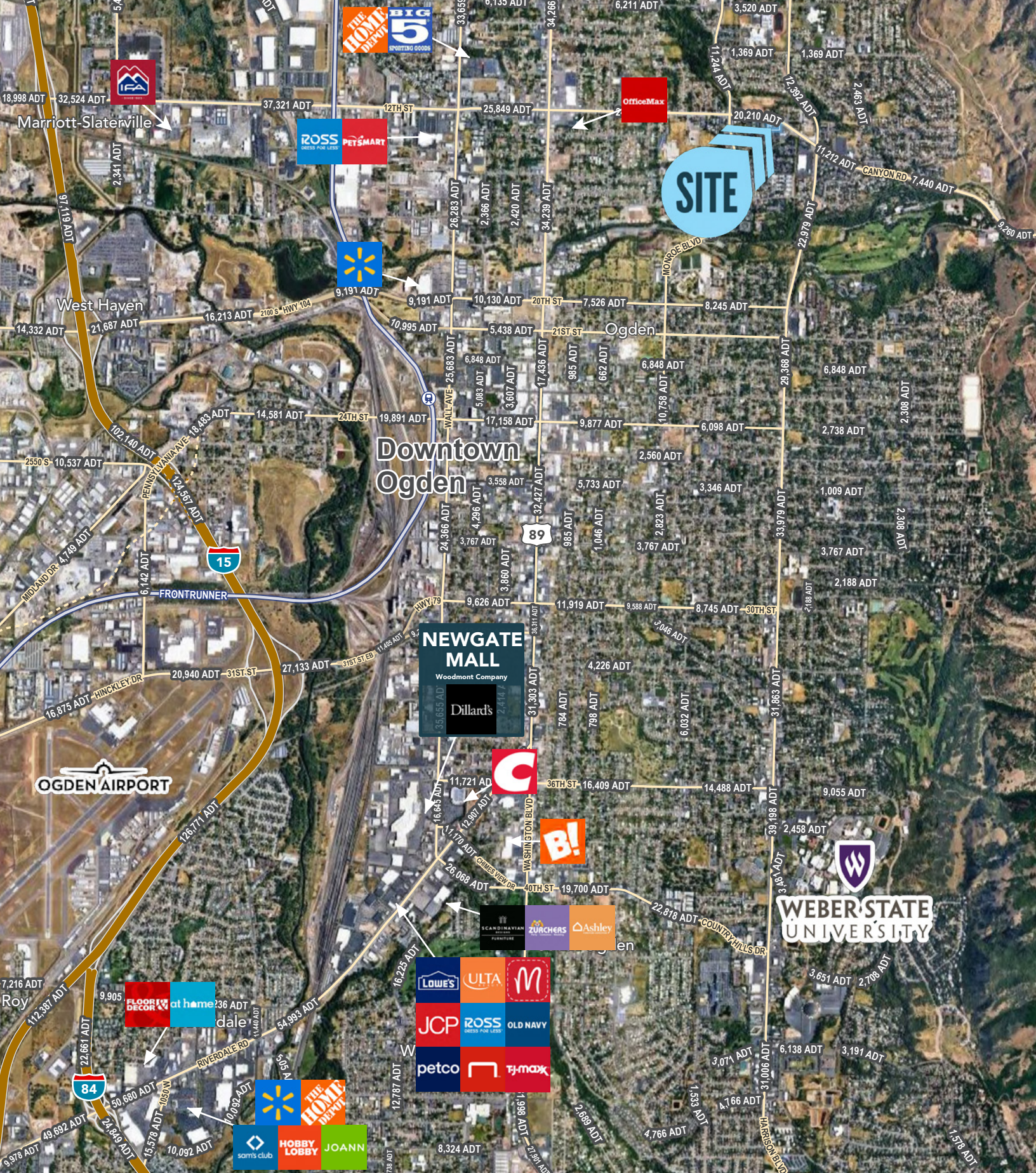


MOUNTAIN WEST
COMMERCIAL REAL ESTATE

CHRIS FALK, CCIM, SIOR
cfalk@mwcre.com
direct 385.429.5500
[View Profile](#)

BRAXTON WILLIE, CCIM
bwillie@mwcre.com
direct 385.429.5501
[View Profile](#)

**FULL SERVICE
COMMERCIAL REAL ESTATE**
1755 East 1450 South
Clearfield, UT 84015
Office 801.578.5580
www.mwcre.com



CHRIS FALK, CCIM, SIOR
 cfalk@mwcre.com
 direct 385.429.5500
[View Profile](#)

BRAXTON WILLIE, CCIM
 bwillie@mwcre.com
 direct 385.429.5501
[View Profile](#)

**FULL SERVICE
 COMMERCIAL REAL ESTATE**
 1755 East 1450 South
 Clearfield, UT 84015
 Office 801.578.5580
www.mwcre.com

This statement with the information it contains is given with the understanding that all negotiations relating to the purchase, renting or leasing of the property described above shall be conducted through this office. The above information while not guaranteed has been secured from sources we believe to be reliable.