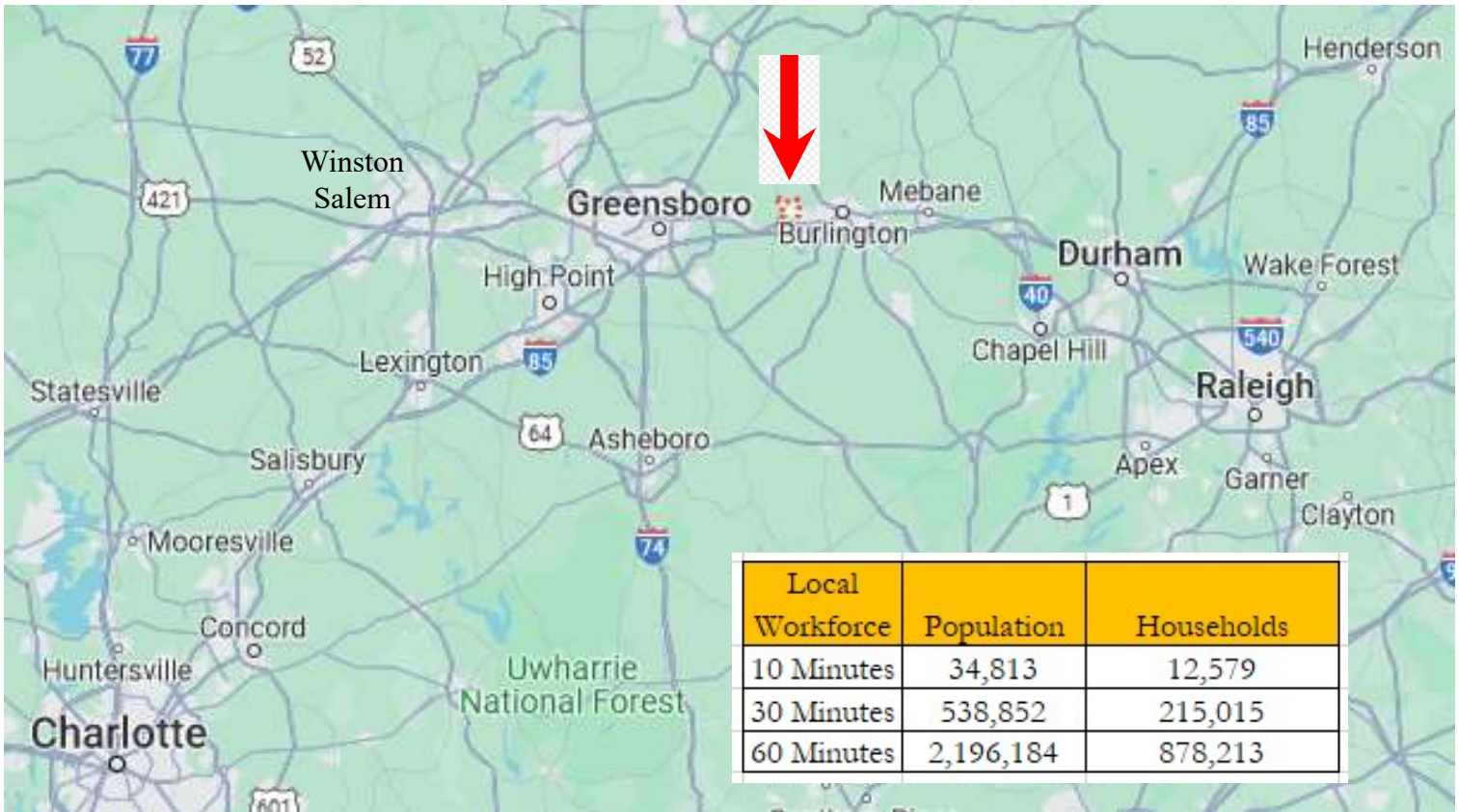


# Industrial For Lease or Sale

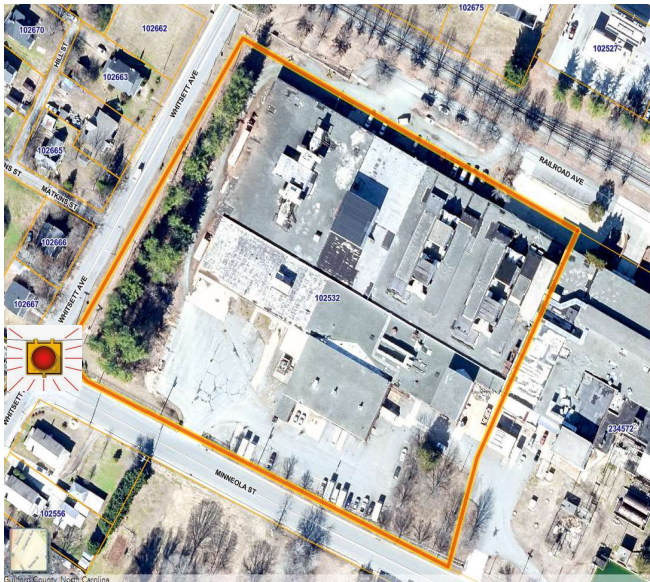
110 - 130 Railroad Avenue, Gibsonville, NC

**DOWELL**  
**COMMERCIAL**



Local Workforce	Population	Households
10 Minutes	34,813	12,579
30 Minutes	538,852	215,015
60 Minutes	2,196,184	878,213

**Central NC Location On I-40 / I-85:**  
Within approx. 3.5 miles of two interstates, this 131K SF industrial facility has a subdividable 65K – 73K+ SF vacancy and is within one hour of NC’s largest cities.



Downtown to Downtown, Per Google Maps	Distance to Gibsonville	Context
Gibsonville		Location of Subject Site.
Elon	< 3 Miles	Adjacent City.
To I-40 / I-85	3.4 - 3.7 Miles	To exits 138 and 140. Two combined interstates.
Burlington	7 Miles	NC's 18th Largest City and Adjacent City.
Greensboro	17 Miles	NC's 3rd Largest City.
PTLA	28 Miles	International Airport
Chapel Hill	40 Miles	NC's 16th Largest City.
Winston Salem	43 Miles	NC's 5th Largest City
Durham	44 Miles	NC's 4th Largest City.
Research Triangle Park	51 Miles	7K Acre Research Park. Largest in the US
RDU	56 Miles	International Airport
Raleigh	66 Miles	NC's 2nd Largest City
Charlotte	106 Miles	NC's Largest City

For More Details, Contact Sean Dowell at (336) 378-5067 or [Sean@DowellCommercial.com](mailto:Sean@DowellCommercial.com)

No warranty or representation, expressed or implied, is made as to the accuracy of the information contained herein and same is submitted subject to errors, omissions, changes of price, rental or other conditions, withdrawn without notice, and to any specific listing conditions, imposed by our principles.

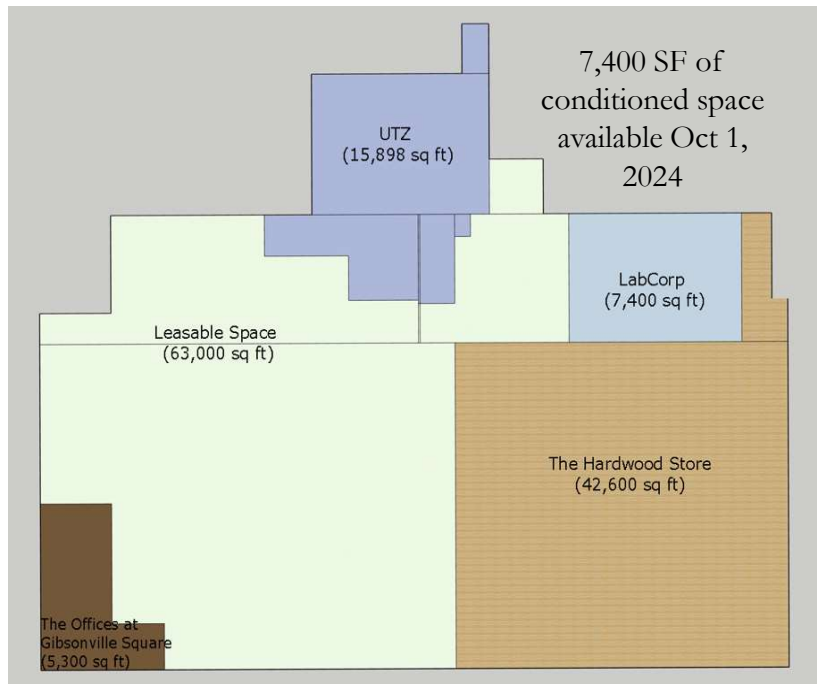
# Industrial For Lease or Sale

110-130 Railroad Avenue, Gibsonville, NC

**DOWELL**  
**COMMERCIAL**



Gibsonville Square offers a safe location three traffic lights from I-40 / I-85 adjacent vibrant downtown Gibsonville. This 290K SF downtown is off four lane University Drive within two miles of a) Elon University and b) Burlington's highest demographic neighbors. Excellent last stop location for a flex or storage user that requires a retail front such as a brewery, a building supply operation, an indoor grow operation, a self storage conversion, if not used simply for warehousing.

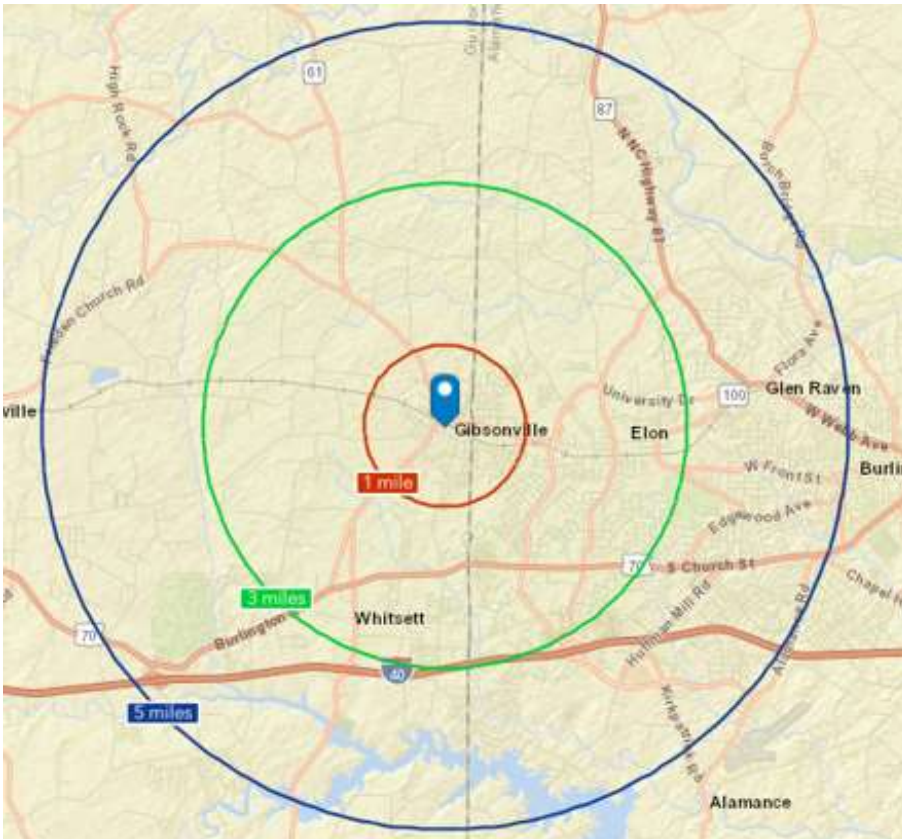


For More Details, Contact Sean Dowell at (336) 378-5067 or [Sean@DowellCommercial.com](mailto:Sean@DowellCommercial.com)

# Industrial For Lease or Sale

110 - 130 Railroad Avenue, Gibsonville, NC

**DOWELL**  
**COMMERCIAL**



## Building Facts

**Parcel:** Guilford Co. REID 102532.

**Land:** 6.34 acres

**Building SF:** Approx. 131K SF.

**Year Built:** Completed 1975 – 1979.

**Tenants:** The Hardwood Store, Utz.

**Zoning:** Industrial.

**Econ. Development:** Tier 2 (2024)

**Fire Suppression:** Wet sprinklers.

**Heat:** Spot gas units.

**Ceiling Height:** 12' – 16' typical.

**Improvements:** A new roof and LED lighting upgrades were installed in 2024. Office space also updated.

**Docks / Drive In:** Building overall has six dock doors, abundant drive in doors, and area to add more

**For Sale:** \$8,908,000 or \$68 SF.

## Available Space Facts:

**Square Footage:** Approx. 65K SF

After Oct 1, 73K+ SF is available.

Space can be subdivided.

**Layout:** Multiple separate industrial areas with common dock space

**Column Spacing:** 26' x 10' is typical with numerous 20' corridors.

**Floors:** Concrete.

**Floor Drains:** Multiple.

**Ceiling Heights:** 12' – 16' is typical with limited areas as tall as 23'.

**Dock / Drive In Doors:** Three dock doors. One 12' x 12' dock door and a grade level door in 65K SF. Two additional dock doors (9' x 11' and 8' x 8') available after Oct 1, 2024.

**For Lease:** Contact broker for details.

# Industrial For Lease or Sale

110-130 Railroad Avenue, Gibsonville, NC

**DOWELL**  
**COMMERCIAL**



Large open approx. 40K SF with varied high clear areas.  
Available space is 65K - 73K+ SF.



No warranty or representation, expressed or implied, is made as to the accuracy of the information contained herein and same is submitted subject to errors, omissions, changes of price, rental or other conditions, withdrawn without notice, and to any specific listing conditions, imposed by our principles.

# Industrial For Lease or Sale

110-130 Railroad Avenue, Gibsonville, NC

**DOWELL**  
**COMMERCIAL**



No warranty or representation, expressed or implied, is made as to the accuracy of the information contained herein and same is submitted subject to errors, omissions, changes of price, rental or other conditions, withdrawn without notice, and to any specific listing conditions, imposed by our principles.