

1608 20th St NW

1608 20th St NW, Washington, DC 20009

Presented by
Sam Kamvar



Price: \$75.00 /SF/YR

Welcome to the heart of Dupont Circle. This incredible opportunity is positioned directly beside the Dupont Circle Metro Station. This is a perfect location for retail as the area garners the best foot traffic in all of Washington, DC. Steps away from the Dupont Farmer's Market, this location brings thousands daily and is prime positioning to build your brand.

The space is great for any retail business looking for a top destination in the DMV to call home. This former tanning salon is the ideal space to build your business. The space was renovated in 2012 adding beautiful glass walls and a large storefront window. The 1,800 square feet has dry-walls that can be removed for an open-floor plan. It also has heavy power capacities for high-voltage equipment.

Pop-ups or short term renters are welcomed to showcase the benefits of the location!

1608 20th St NW

1608 20th St NW, Washington, DC 20009



Heavy foot traffic, Unbeatable Location
Perfect for a Wellness Center, Medical Spa, Dental office
High-Voltage Power Capacity
Open space capability, customizable floor plans
Great for pop-ups, short-term leases negotiable

Sam Kamvar

tanningbytanline@gmail.com

(703) 622-8246

Sam Kamvar

1608 20th St NW
Washington, DC 20009

1608 20th St NW

1608 20th St NW, Washington, DC 20009

1608 20th St NW, Washington, DC 20009



Building Photo

Listing space

1st Floor

Space Available	1,800 SF
Rental Rate	\$75.00 /SF/YR
Date Available	Now
Service Type	Triple Net (NNN)
Built Out As	Standard Retail
Space Type	Sublet
Space Use	Retail

Prime location in heart of Dupont Circle less than a block to North Dupont Circle Metro station. This Upscale Storefront Retail Skincare Spa and Wellness Center is offering space/studio for lease. The lease space has High-Power Electricity Capabilities for specialty High-Voltage equipment. Services that would be a good fit : Aesthetic Provider, laser hair removal, Body Sculpting, Weight Management, Brow expert (Micro Blading), Permanent Makeup, Tattoo Artist and Much More...Must Have: Business Entity, Insurance and State License for services provided

1608 20th St NW

1608 20th St NW, Washington, DC 20009

Property Photos



Building Photo



Building Photo

1608 20th St NW

1608 20th St NW, Washington, DC 20009

Property Photos



Building Photo



Building Photo

1608 20th St NW

1608 20th St NW, Washington, DC 20009

Property Photos



Building Photo



Building Photo

1608 20th St NW

1608 20th St NW, Washington, DC 20009

Property Photos



Building Photo



Building Photo

1608 20th St NW

1608 20th St NW, Washington, DC 20009

Property Photos



Building Photo



Building Photo

1608 20th St NW

1608 20th St NW, Washington, DC 20009

Property Photos



Building Photo



Building Photo

1608 20th St NW

1608 20th St NW, Washington, DC 20009

Property Photos



Building Photo



Building Photo

1608 20th St NW

1608 20th St NW, Washington, DC 20009

Property Photos



Building Photo



Building Photo

1608 20th St NW

1608 20th St NW, Washington, DC 20009

Property Photos



Building Photo



Building Photo

1608 20th St NW

1608 20th St NW, Washington, DC 20009

Property Photos



Building Photo

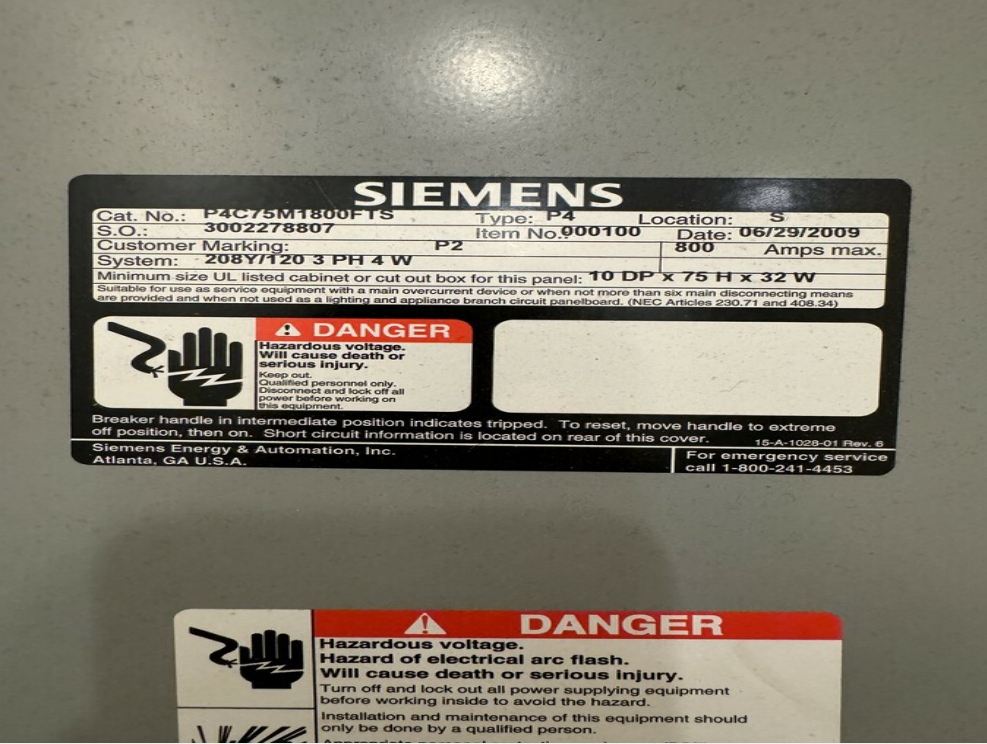


Building Photo

1608 20th St NW

1608 20th St NW, Washington, DC 20009

Property Photos



Building Photo



Building Photo

1608 20th St NW

1608 20th St NW, Washington, DC 20009

Property Photos



Building Photo



Building Photo

1608 20th St NW

1608 20th St NW, Washington, DC 20009

Property Photos



Building Photo

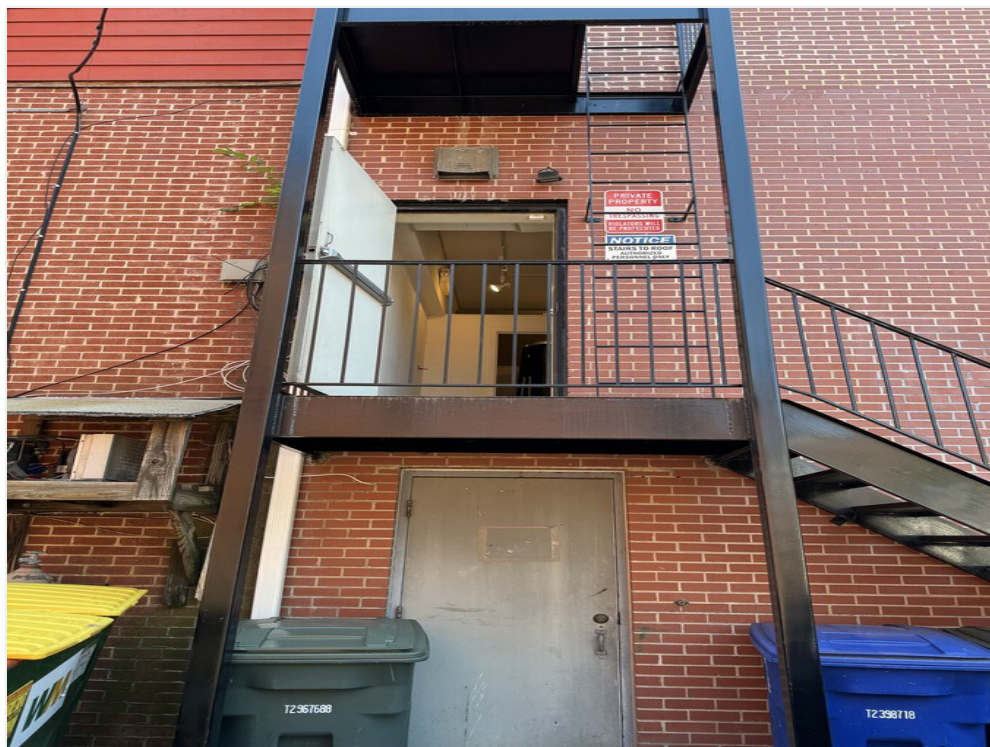


Building Photo

1608 20th St NW

1608 20th St NW, Washington, DC 20009

Property Photos



Building Photo

1608 20th St NW

1608 20th St NW, Washington, DC 20009

Location

