



## ±23,200 SF Retail Building For Lease | Lawrence Expy Plaza

**3735 EL CAMINO REAL  
SANTA CLARA, CA**

### Space Highlights

- ±23,200 SF Big Lots For Lease
- Available Date: Feb 2025
- Pylon Signage on El Camino Real
- Anchors- Lucky Store and 24 Hour Fitness (New 2023)



*For information, please contact:*

#### **Jim Randolph**

*Executive Vice President*

t 408-982-8468

jim.randolph@nrmk.com

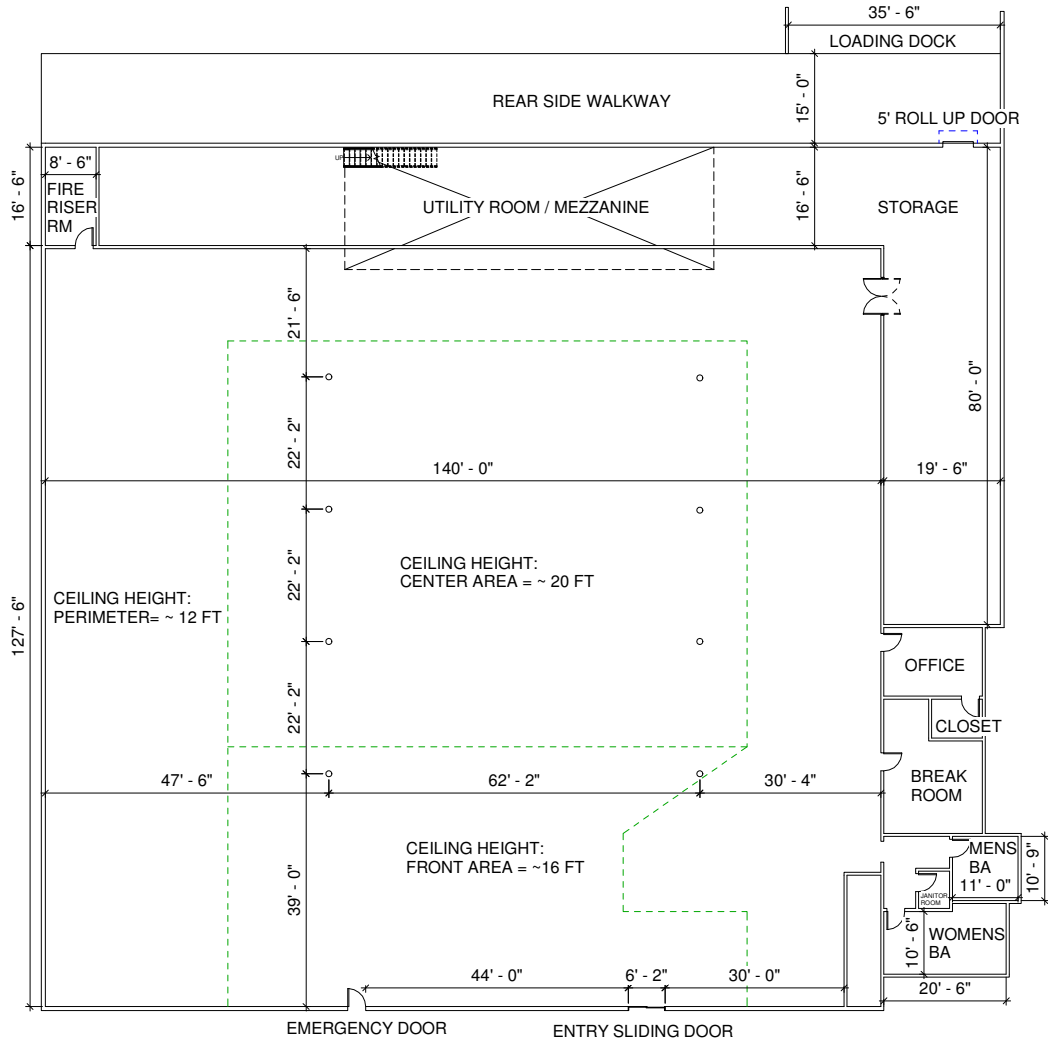
CA RE License #00606657

[nrmk.com](http://nrmk.com)

**NEWMARK**

The distributor of this communication is performing acts for which a real estate license is required. The information contained herein has been obtained from sources deemed reliable but has not been verified and no guarantee, warranty or representation, either express or implied, is made with respect to such information. Terms of sale or lease and availability are subject to change or withdrawal without notice. MP-1347 • 09/24

**Floor Plan**



\*This floor plan is not drawn to scale.

*For information, please contact:*

**Jim Randolph**

Executive Vice President

t 408-982-8468

jim.randolph@nmrk.com

CA RE License #00606657

[nmrk.com](http://nmrk.com)

**NEWMARK**

The distributor of this communication is performing acts for which a real estate license is required. The information contained herein has been obtained from sources deemed reliable but has not been verified and no guarantee, warranty or representation, either express or implied, is made with respect to such information. Terms of sale or lease and availability are subject to change or withdrawal without notice. MP-1347 • 09/24

## Amenities Map



For information, please contact:

**Jim Randolph**

Executive Vice President

t 408-982-8468

jim.randolph@nmrk.com

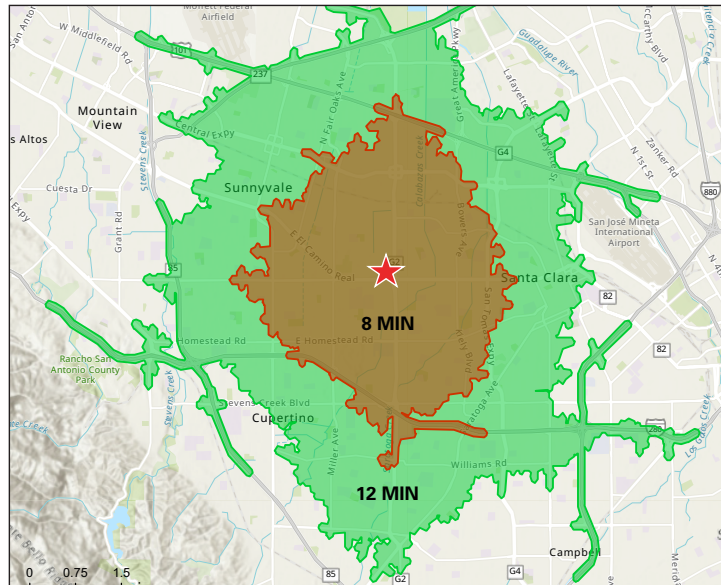
CA RE License #00606657

[nmrk.com](http://nmrk.com)

# NEWMARK

The distributor of this communication is performing acts for which a real estate license is required. The information contained herein has been obtained from sources deemed reliable but has not been verified and no guarantee, warranty or representation, either express or implied, is made with respect to such information. Terms of sale or lease and availability are subject to change or withdrawal without notice. MP-1347 • 09/24

## Demographics



DRIVE TIME DEMOGRAPHICS (2024)	8 Mins	12 Mins
2024 Total Population	129,362	352,453
2024 Total Daytime Population	128,713	392,357
2024 Total Households	47,818	131,721
2024 Average Household Size	2.69	2.65
Median Household Income	\$186,810	\$173,608
Median Home Value	\$1,748,926	\$1,730,928
Per Capita Income	\$89,594	\$85,252
2024 Population by Race/Ethnicity		
Total	129,362	352,453
White	25.5%	26.9%
Black	1.5%	1.9%
American Indian	0.6%	0.7%
Asian	56.5%	52.6%
Pacific Islander	0.3%	0.3%
Some Other Race	7.2%	8.8%
Two or More Races	8.4%	8.8%
Hispanic Origin	14.1%	16.3%
Diversity Index	69.9	73.4

*For information, please contact:*

**Jim Randolph**

Executive Vice President

t 408-982-8468

jim.randolph@nmrk.com

CA RE License #00606657

[nmrk.com](http://nmrk.com)

---

## Gallery



---

*For information, please contact:*

**Jim Randolph**

*Executive Vice President*

t 408-982-8468

[jim.randolph@nmrk.com](mailto:jim.randolph@nmrk.com)

CA RE License #00606657

[nmrk.com](http://nmrk.com)

**NEWMARK**

The distributor of this communication is performing acts for which a real estate license is required. The information contained herein has been obtained from sources deemed reliable but has not been verified and no guarantee, warranty or representation, either express or implied, is made with respect to such information. Terms of sale or lease and availability are subject to change or withdrawal without notice. MP-1347 • 09/24