

# AVAILABLE:

# ±48,000 SF INDUSTRIAL



**9310 W. Buckeye Rd | Tolleson, AZ | 85353**  
**Sublease | Distribution Space**



## CONTACT

**Steve Bodeman**  
**Executive Vice President**  
**602.575.2307 Direct**  
**602.524.2208 Cell**

Steve.bodeman@daumcommercial.com



D/AQ Corp. # 01129558 | Although all information is furnished regarding sale, rental or financing is from sources deemed reliable, such information has not been verified and no express representation is made nor is any to be implied as to the accuracy thereof, and it is submitted subject to errors, omissions, changes of price, rental or other conditions, prior sale, lease or financing, or withdrawal without notice. \*Comparable to buildings of this size.

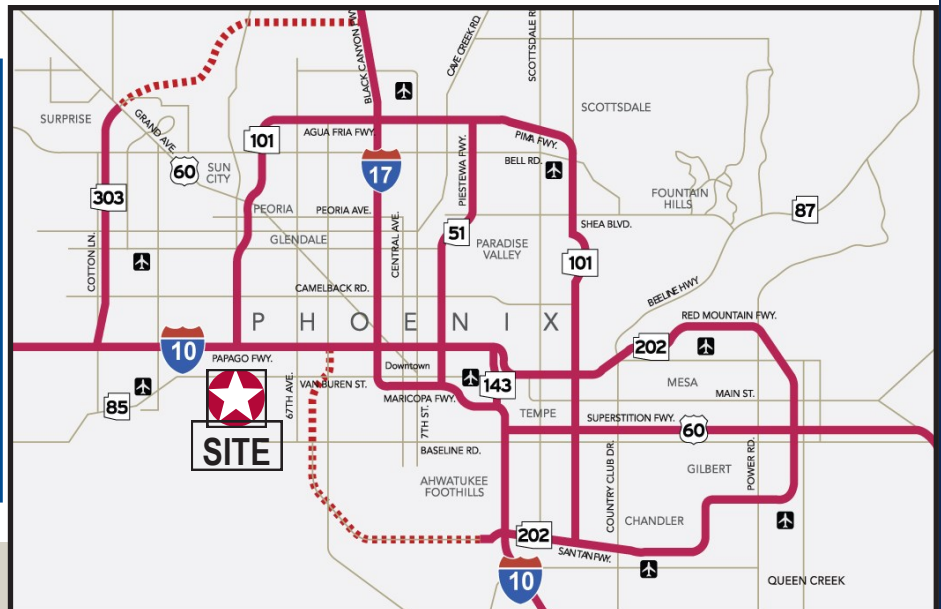
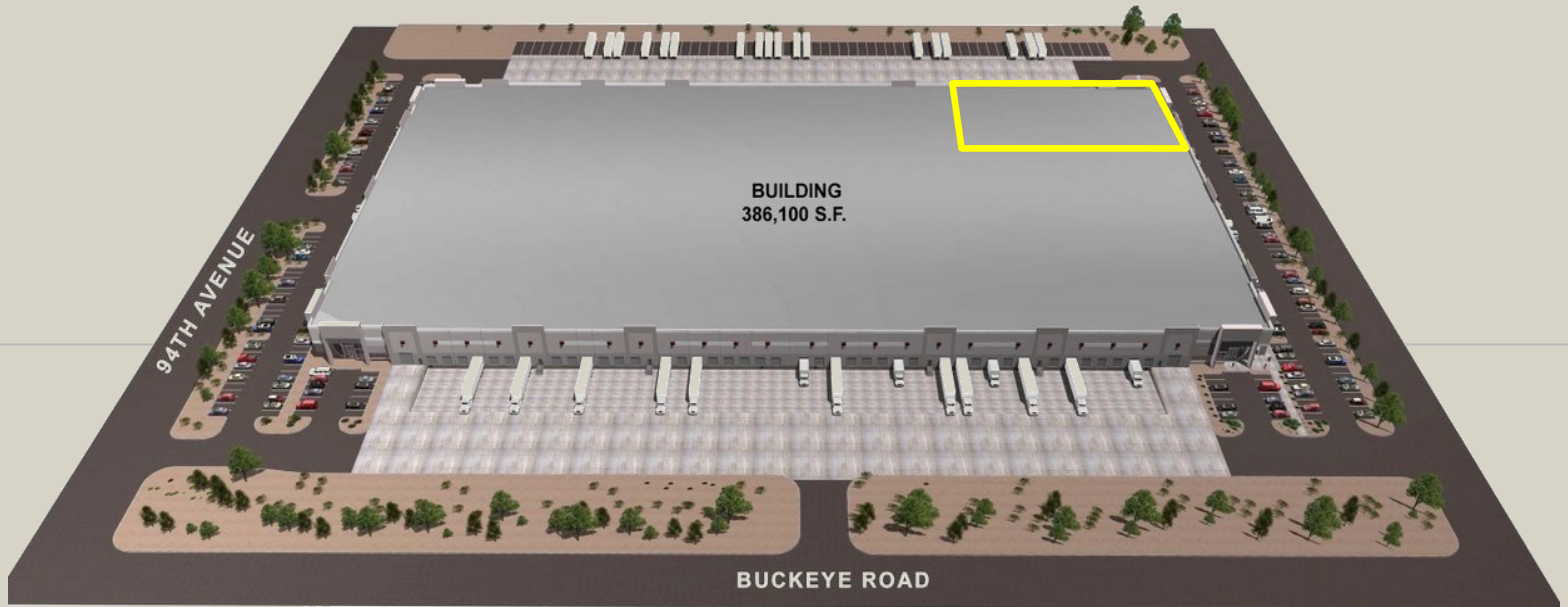
## FEATURES

- New Construction-Completion January 2016
- Spec Office (Size TBD)
- 36' Clearance
- 277/480 Volt Power
- ESFR Fire Sprinklers
- I-2 Zoning; Tolleson, AZ
- Eight Dock High Doors
- One Drive-in Ramp
- \$.35/sf NNN

**AVAILABLE:**

**±48,000 SF INDUSTRIAL**

## **SUBLEASE Distribution Space**



**CONTACT**

**Steve Bodeman**  
Executive Vice President  
602.575.2307 Direct  
602.524.2208 Cell

Steve.bodeman@daumcommercial.com

**DAUM**  
COMMERCIAL REAL ESTATE SERVICES

www.daumcommercial.com

D/AQ Corp. # 01129558 | Although all information is furnished regarding for sale, rental or financing is from sources deemed reliable, such information has not been verified and no express representation is made nor is any to be implied as to the accuracy thereof, and it is submitted subject to errors, omissions, changes of price, rental or other conditions, prior sale, lease or financing, or withdrawal without notice. \*Comparable to buildings of this size.