

FOR LEASE

1500 State Street
San Diego, CA 92101



Well Located Little Italy Office Building For Lease

EMMETT CAHILL
619.243.8470
ecahill@qfcre.com
BRE #02033604

PETER WRIGHT
619.243.8450
pwright@qfcre.com
BRE #01846272

The information contained here has been obtained from sources considered to be reliable, but no guarantee of its accuracy is made by this company. In addition, no representation is made respecting zoning, condition of title, dimensions or any matters of a legal or environmental nature. Such matters should be referred to legal counsel for determination. Terms and conditions are subject to change without prior notice. Subject to errors and omissions.



LEASE RATE

\$1.50 PSF + Utilities

SPACE AVAILABLE

1,600 - 28,100 SF

PROPERTY HIGHLIGHTS

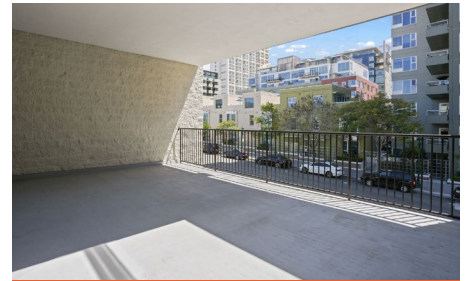
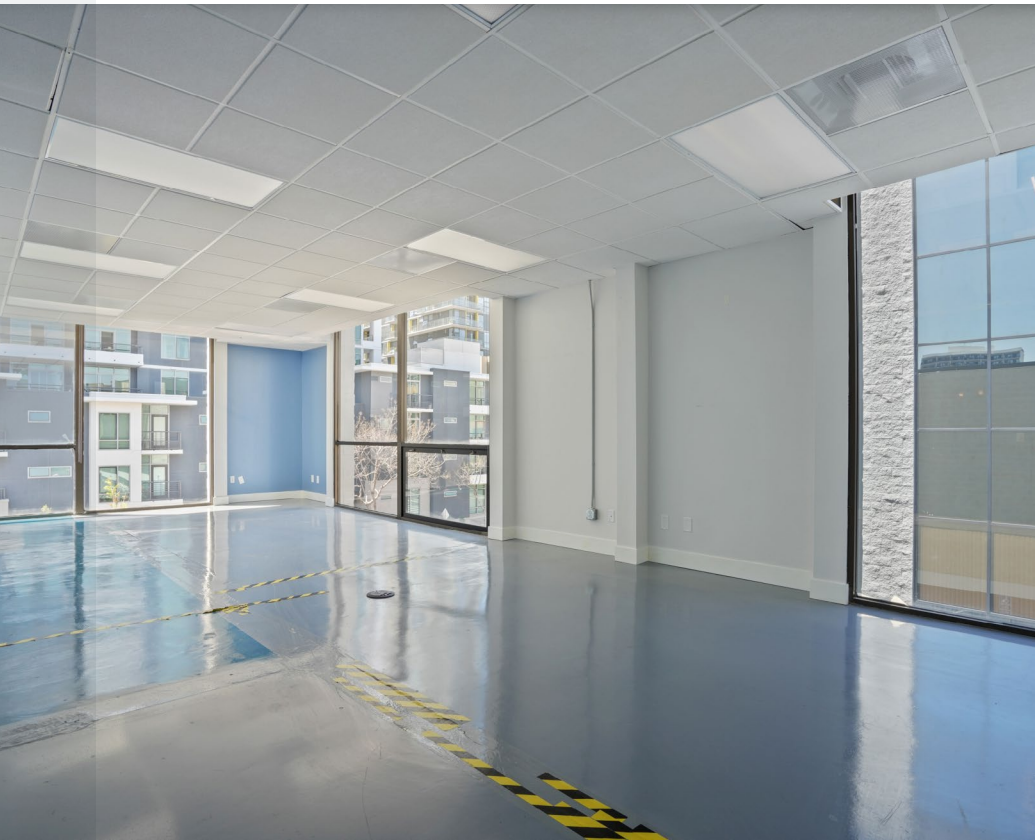
- Built in 1978, renovated in 2020
- 45 car subterranean parking lot with elevator access
- Colorful accents to inspire creativity
- Contemporary appliances and amenities
- Updated restrooms and flooring

SUITE	SQUARE FEET
100	10,000
120	2,000
150	1,600
200	14,500
Entire Building	28,100

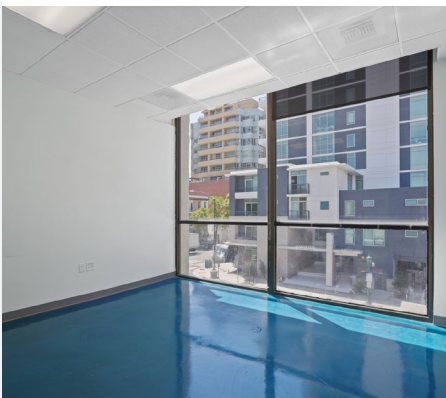
EMMETT CAHILL
619.243.8470
ecahill@qfcre.com
BRE #02033604

PETER WRIGHT
619.243.8450
pwright@qfcre.com
BRE #01846272

The information contained here has been obtained from sources considered to be reliable, but no guarantee of its accuracy is made by this company. In addition, no representation is made respecting zoning, condition of title, dimensions or any matters of a legal or environmental nature. Such matters should be referred to legal counsel for determination. Terms and conditions are subject to change without prior notice. Subject to errors and omissions.



PHOTOS



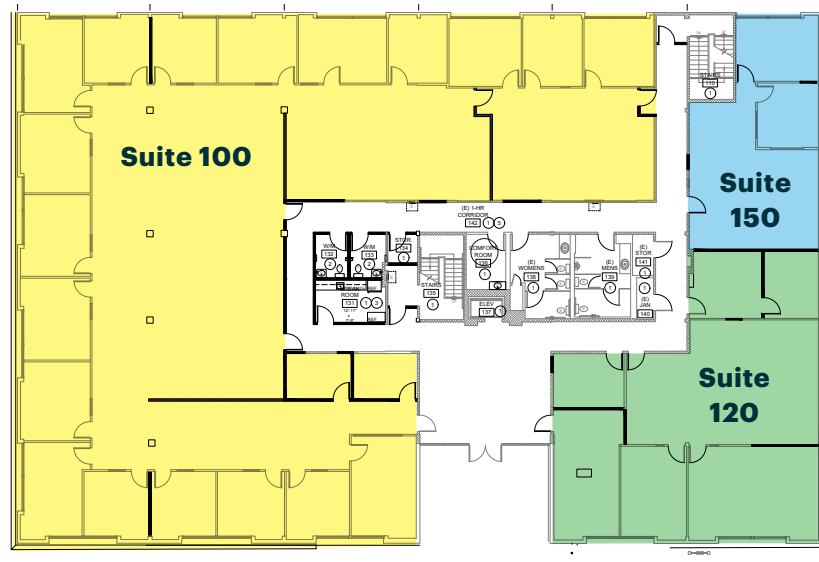
EMMETT CAHILL
619.243.8470
ecahill@qfcre.com
BRE #02033604

PETER WRIGHT
619.243.8450
pwright@qfcre.com
BRE #01846272

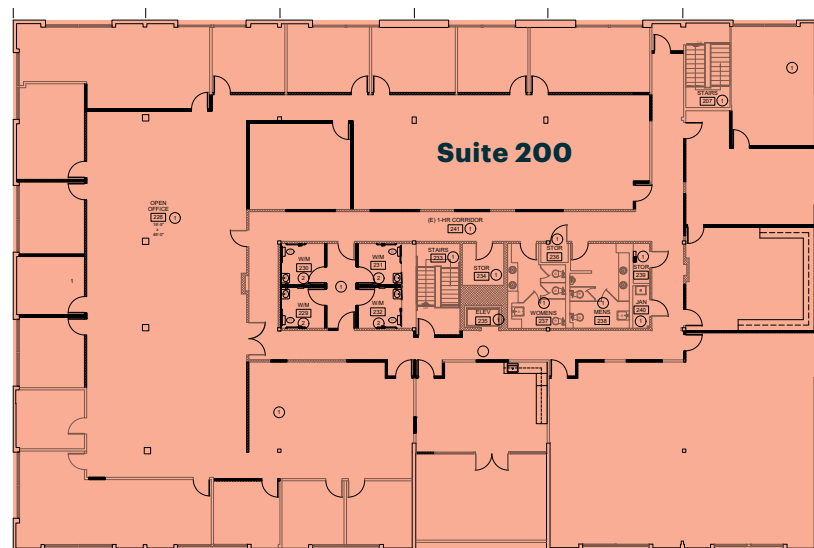
The information contained here has been obtained from sources considered to be reliable, but no guarantee of its accuracy is made by this company. In addition, no representation is made respecting zoning, condition of title, dimensions or any matters of a legal or environmental nature. Such matters should be referred to legal counsel for determination. Terms and conditions are subject to change without prior notice. Subject to errors and omissions.

FLOOR PLANS

FIRST FLOOR



SECOND FLOOR

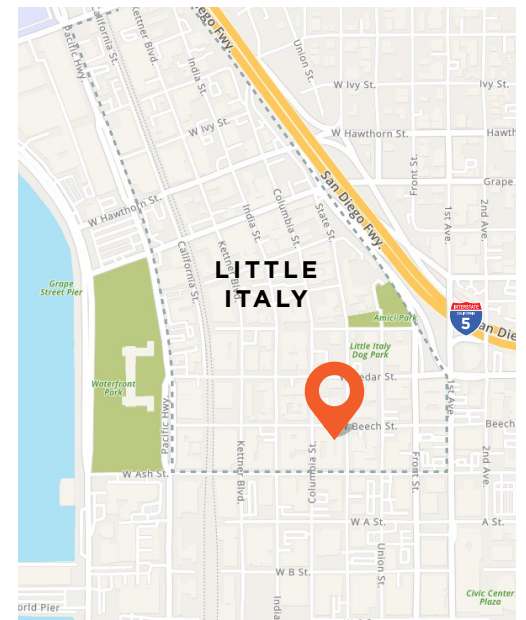
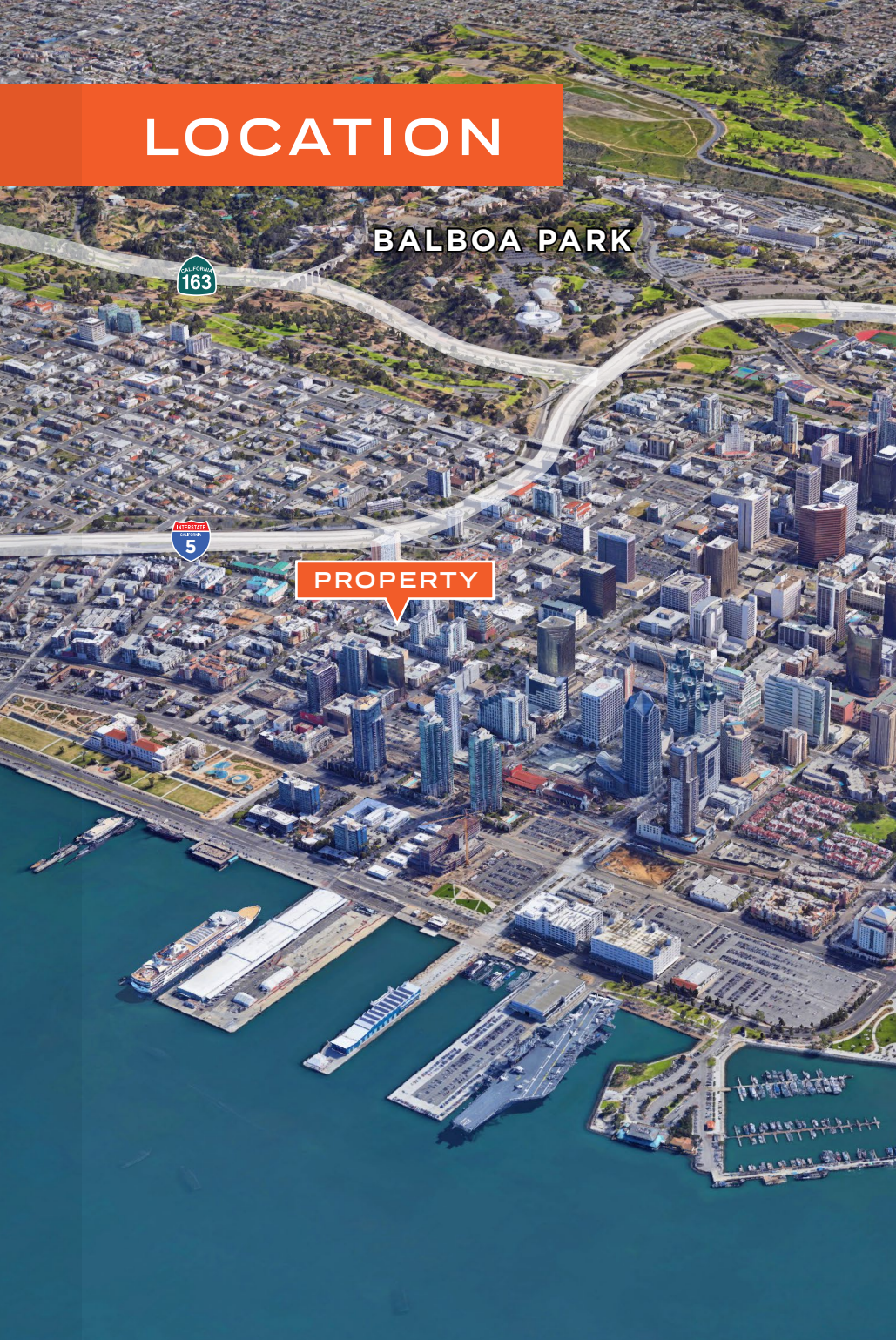


EMMETT CAHILL
619.243.8470
ecahill@qfcre.com
BRE #02033604

PETER WRIGHT
619.243.8450
pwright@qfcre.com
BRE #01846272

The information contained here has been obtained from sources considered to be reliable, but no guarantee of its accuracy is made by this company. In addition, no representation is made respecting zoning, condition of title, dimensions or any matters of a legal or environmental nature. Such matters should be referred to legal counsel for determination. Terms and conditions are subject to change without prior notice. Subject to errors and omissions.

LOCATION



LOCATION HIGHLIGHTS

Located in the heart of the chic, pedestrian-friendly neighborhood of downtown San Diego's Little Italy, 1500 State Street is within walking distance of countless trendy cafes, restaurants, and fine dining venues. Only minutes from the San Diego International Airport and a short drive to several major interstates (15, 163, 94, 8 and 5 freeways), 1500 is not only extremely walkable, but easily accessible.

Median Household Income

\$89,408

Population

15,473

per square mile

Median Age

37

EMMETT CAHILL

619.243.8470
ecahill@qfcre.com
BRE #02033604

PETER WRIGHT

619.243.8450
pwright@qfcre.com
BRE #01846272

The information contained here has been obtained from sources considered to be reliable, but no guarantee of its accuracy is made by this company. In addition, no representation is made respecting zoning, condition of title, dimensions or any matters of a legal or environmental nature. Such matters should be referred to legal counsel for determination. Terms and conditions are subject to change without prior notice. Subject to errors and omissions.

FOR LEASE
1500 State Street
San Diego, CA 92101



Contact Information

QFC REAL ESTATE
1495 Pacific Highway, Suite 450
San Diego, CA 92101
619.243.8454 • qfcre.com

EMMETT CAHILL
619.243.8470
ecahill@qfcre.com
BRE #02033604

PETER WRIGHT
619.243.8450
pwright@qfcre.com
BRE #01846272

The information contained here has been obtained from sources considered to be reliable, but no guarantee of its accuracy is made by this company. In addition, no representation is made respecting zoning, condition of title, dimensions or any matters of a legal or environmental nature. Such matters should be referred to legal counsel for determination. Terms and conditions are subject to change without prior notice. Subject to errors and omissions.