

1906 El Camino Real

RAISE

11,752 SF Office Full Building HQ Opportunity (can demise)

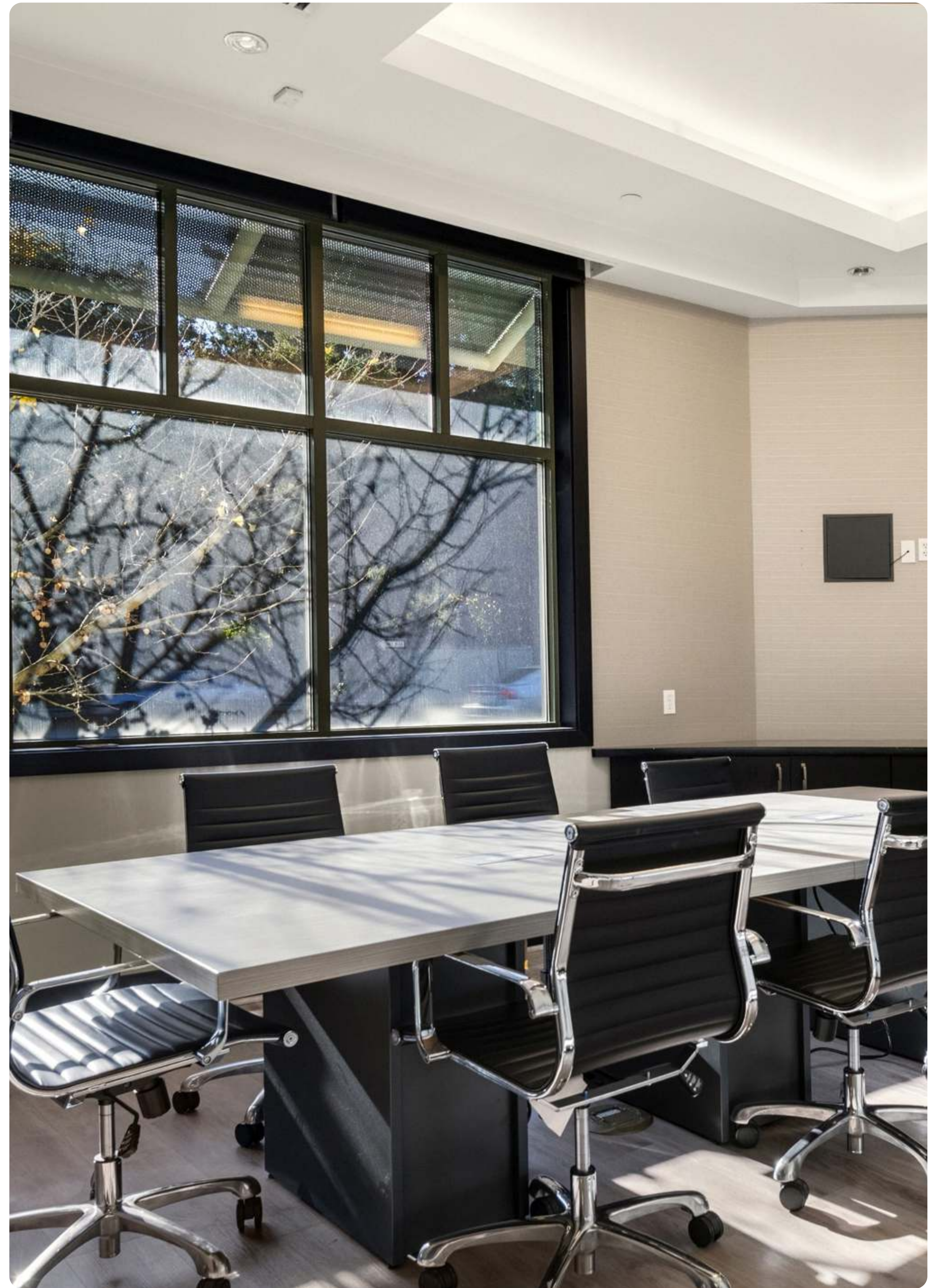


Joey Alftin
Lic. 02086817
650-520-0324
joey@raise.work

Beto Santana Ruiz
Lic. 02222480
385-250-7852
beto@raise.work

Matt Winters
Lic. 01405284
650-248-7797
matt@raise.work

Bridget Fahey
Lic. 02013195
650-862-0422
bridget@raise.work



Suite 101

Square Feet

2,549 SF

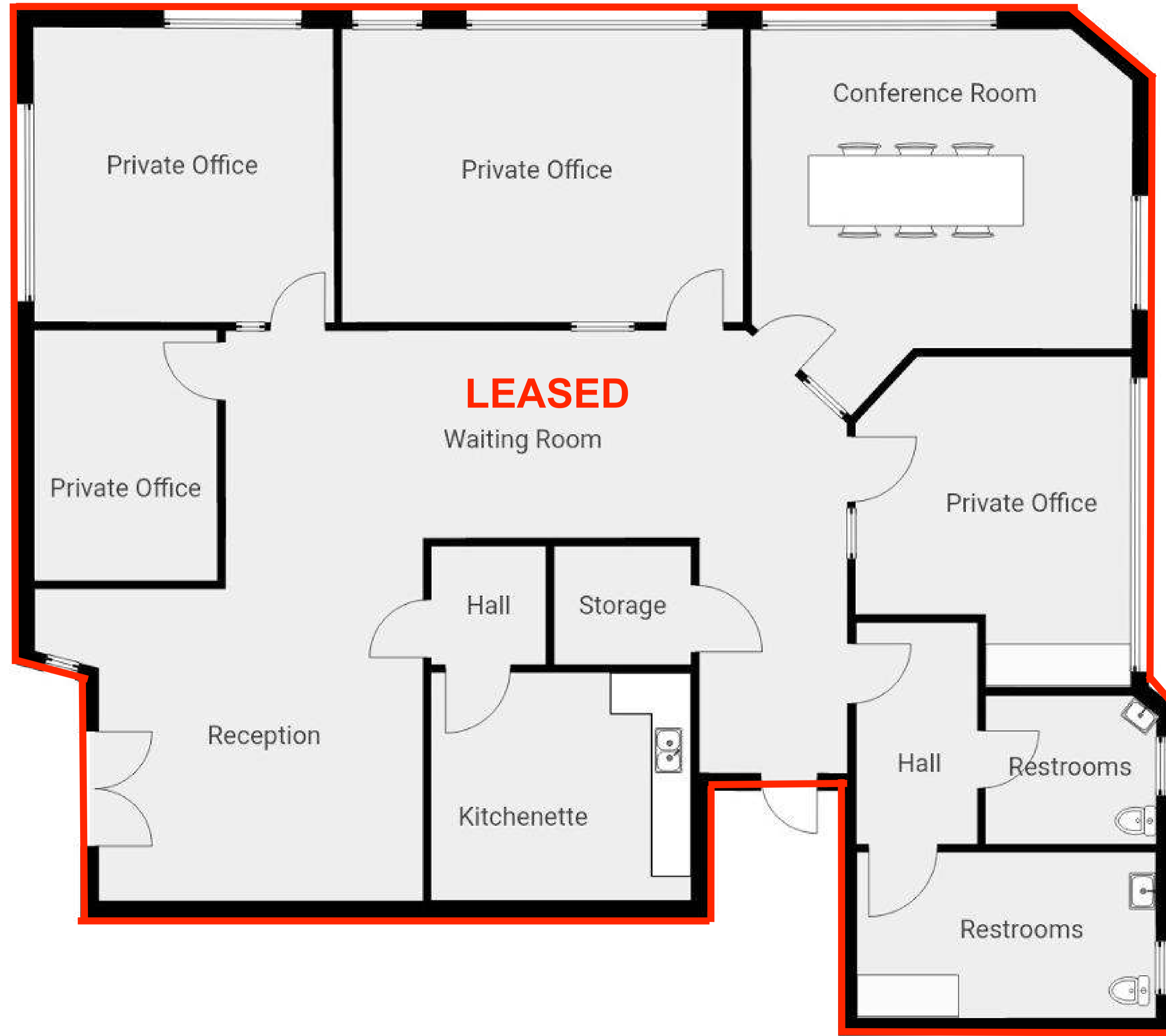
Availability

LEASED

Rate

Term

Flexible



- 4 Private Offices
- 1 Large Conference Room
- Private Kitchenette/Break Room
- Men's/Woman's Restrooms
- Large Open Waiting Area
- 5/1,000 Parking On Site



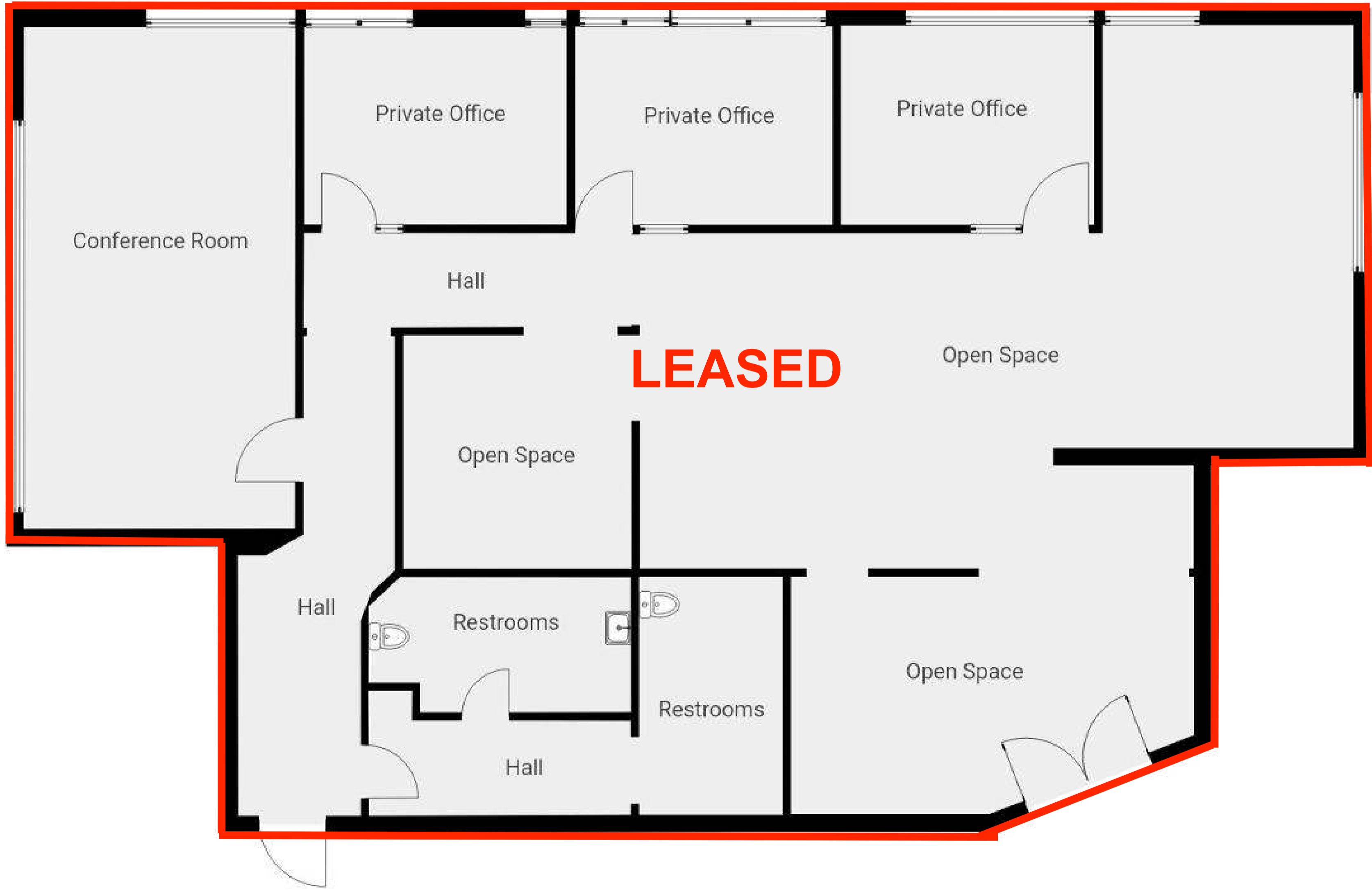
Suite 102

Square Feet
2,748 SF

Availability
LEASED

Rate

Term
Flexible



- 3 Private Offices
- Large Open Areas
- Conference Room With Bar
- Men's/Woman's Restrooms
- Window Line Throughout
- 5/1,000 Parking On-Site



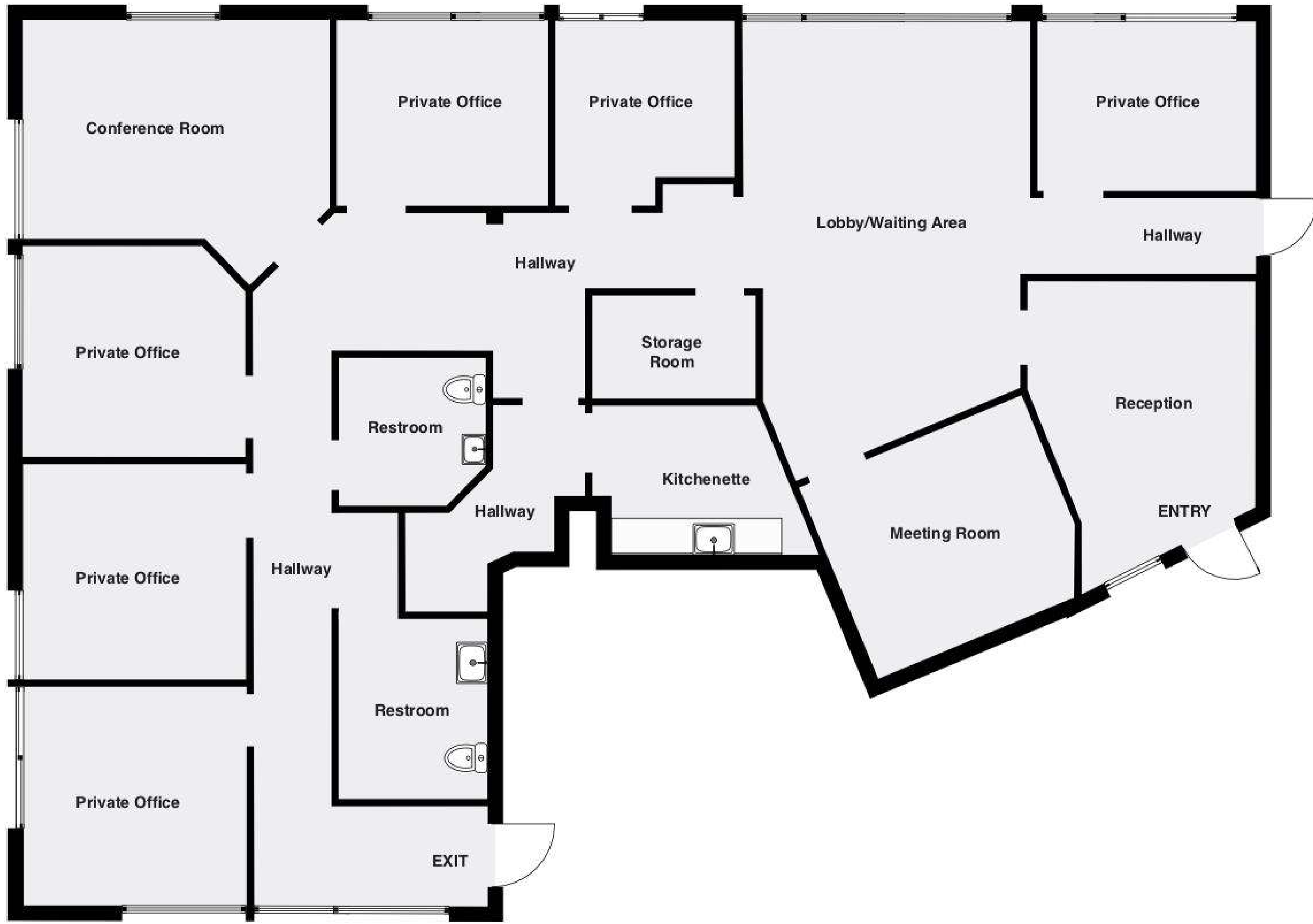
Suite 202

Square Feet
3,200 SF

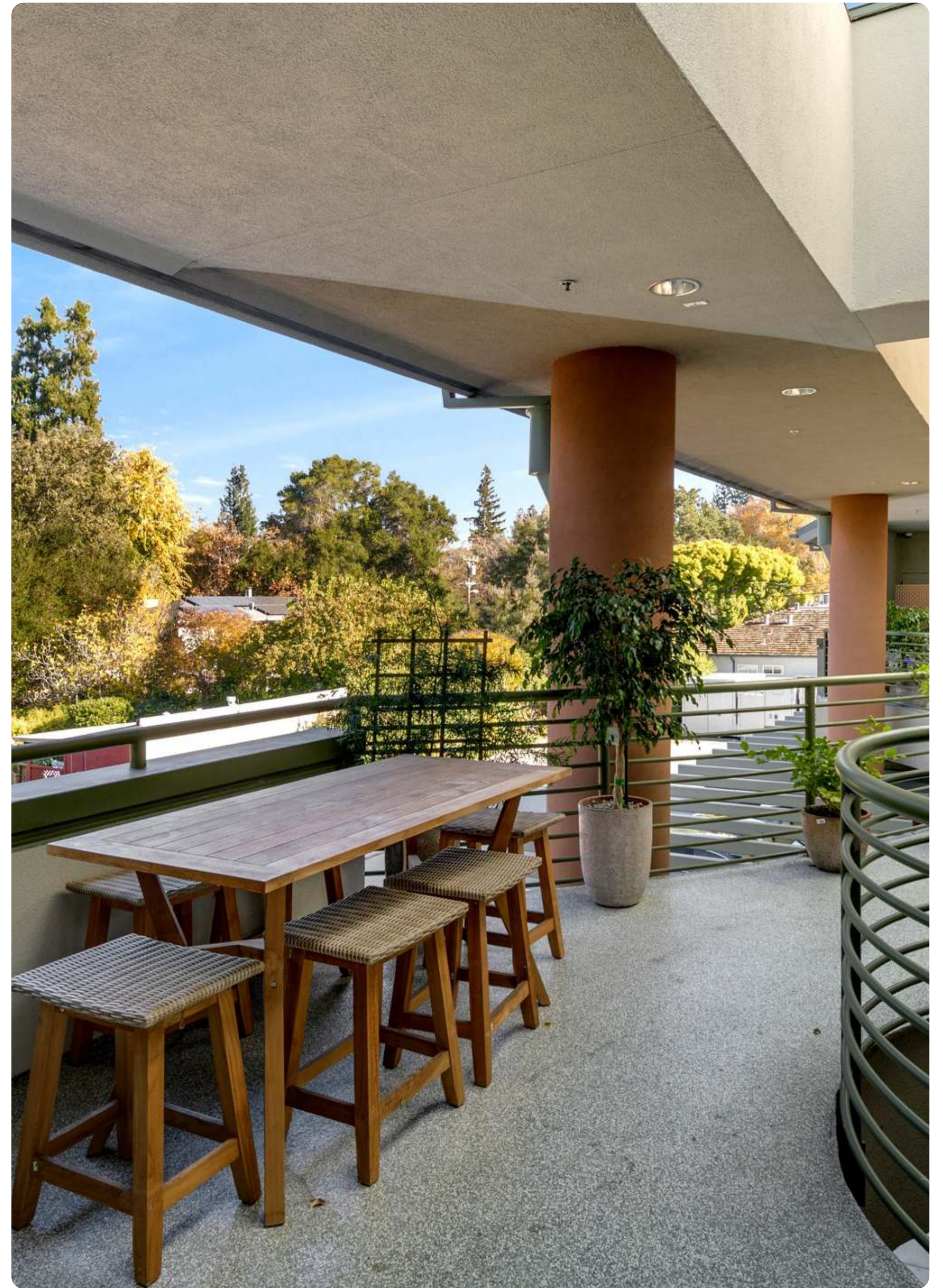
Availability
Immediately

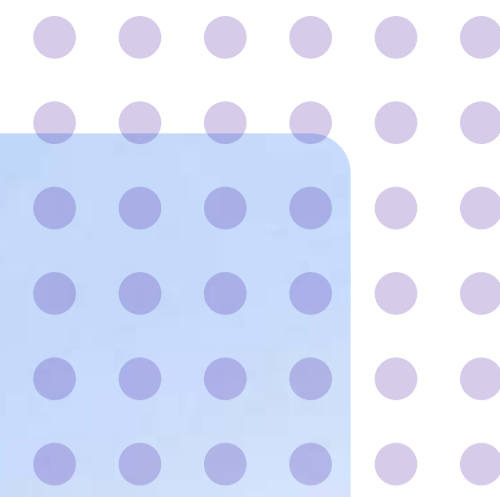
Rate
\$5.25 NNN

Term
Flexible



- 2 Private Offices
- Large Open Areas
- Private Kitchenette
- Window Line Throughout
- Men's/Woman's Restrooms
- Elevator Access
- 5/1,000 Parking On-Site





Joey Alftin
Lic. 02086817
650-520-0324
joey@raise.work

Beto Santana Ruiz
Lic. 02222480
385-250-7852
beto@raise.work

Matt Winters
Lic. 01405284
650-248-7797
matt@raise.work

Bridget Fahey
Lic. 02013195
650-862-0422
bridget@raise.work

RAISE