

2026 DEMOGRAPHICS

1 Mile | 3 Miles | 5 Miles



Population

11,936 | 112,914 | 277,710



Daytime Population

8,678 | 92,954 | 292,576



Median Household Income

\$44,214 | \$48,694 | \$63,988

RETAIL FOR SALE OR LEASE

3501 North Kingshighway Boulevard | St. Louis, Missouri 63115

9,060 SF | Call for Details

PROPERTY DETAILS

Free-standing building on 0.92 acres

Pylon signage available

Located near the intersection of Natural Bridge and Kingshighway

Zoned Commercial

Kingshighway Boulevard - 18,875 VPD

Natural Bridge Avenue - 13,890 VPD

Ashley Krekovich

314.785.7613

akrekovich@paceproperties.com

John Shuff

314.785.7630

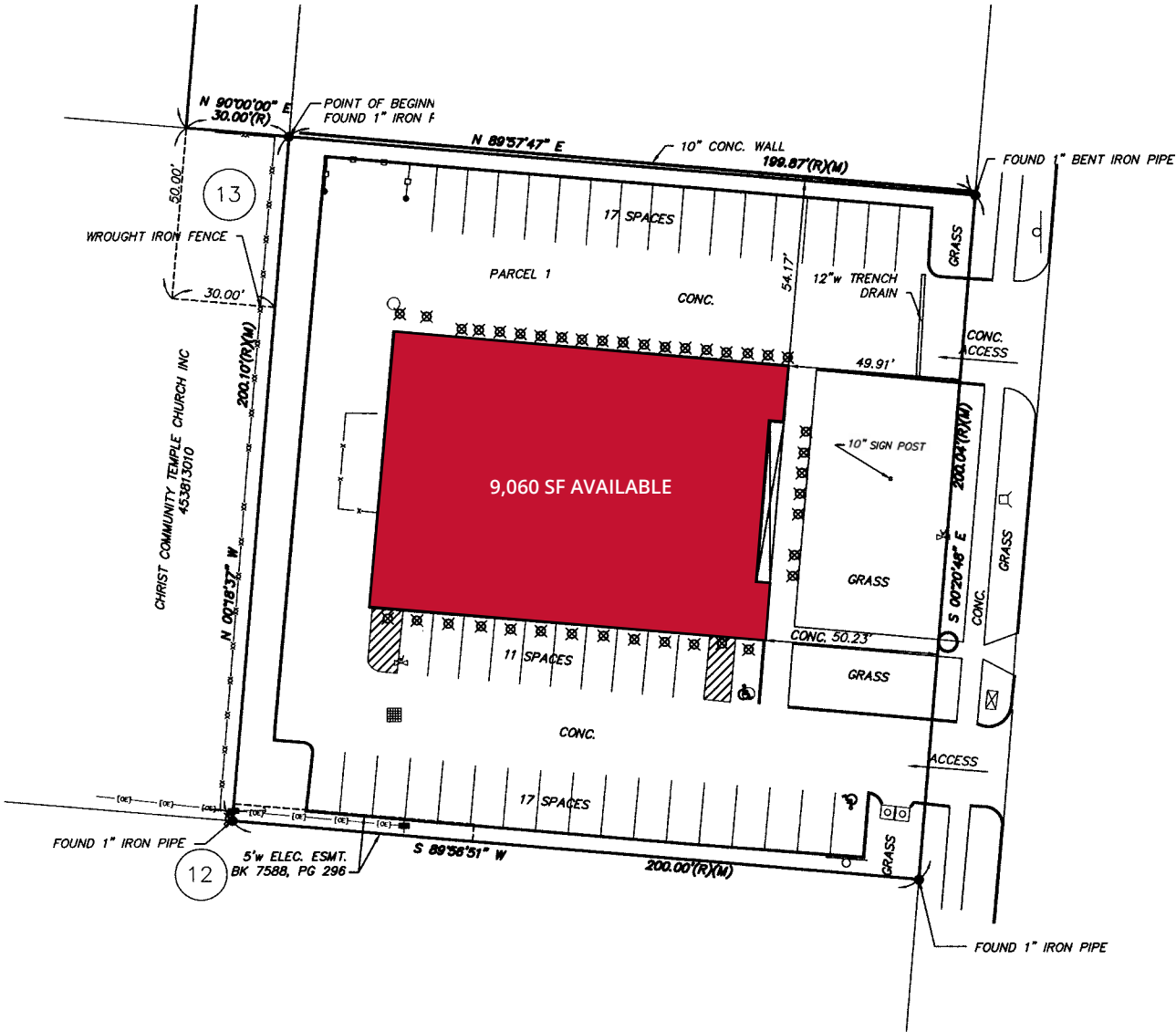
jshuff@paceproperties.com

[PACEPROPERTIES.COM](https://www.paceproperties.com) | 314.968.9898

1401 South Brentwood Boulevard, Suite 900 | St. Louis, Missouri 63144

The information contained herein is not warranted, although it has been obtained from the owner/landlord of the subject property or from other sources that Pace Properties, Inc. deems reliable, and is subject to change without notice. Owner/landlord and Pace Properties, Inc. make no representations as to the environmental condition of the subject property and recommend tenant's independent investigation.

Survey



The information contained herein is not warranted, although it has been obtained from the owner/landlord of the subject property or from other sources that Pace Properties, Inc. deems reliable, and is subject to change without notice. Owner/landlord and Pace Properties, Inc. make no representations as to the environmental condition of the subject property and recommend tenant's independent investigation.