

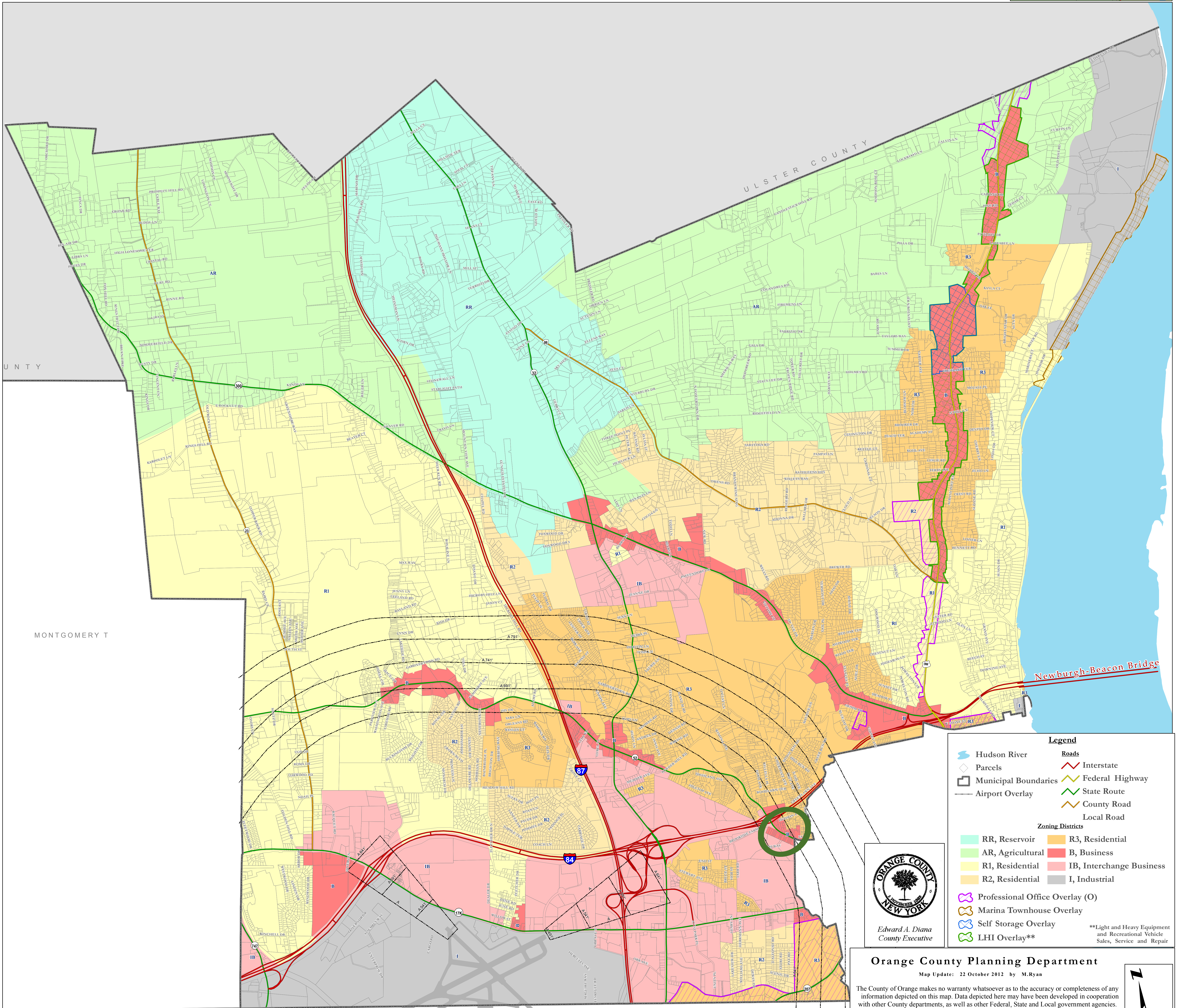
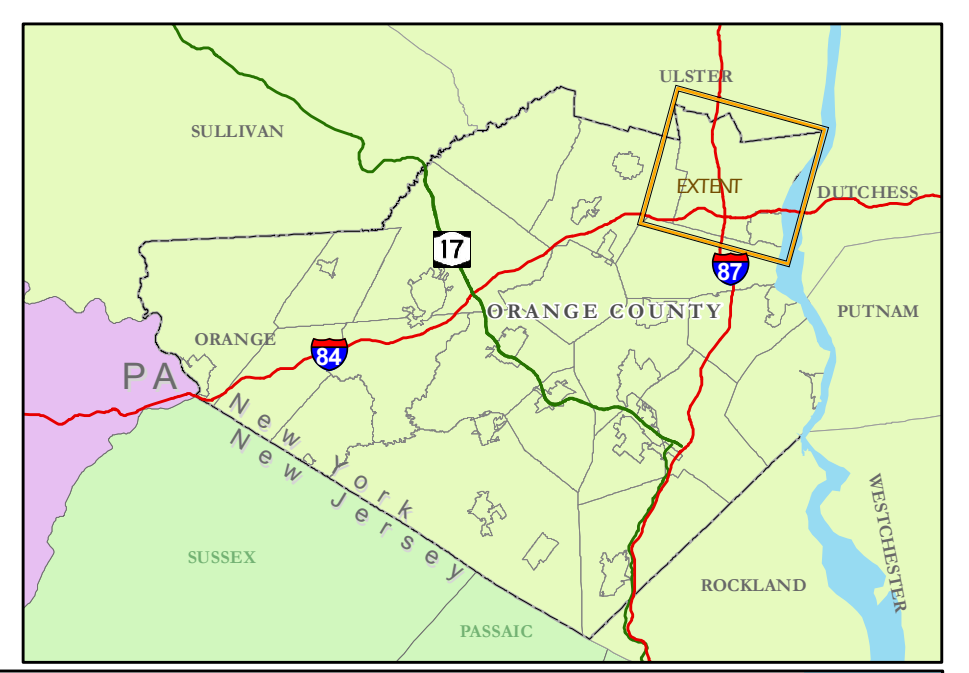
Town of Newburgh

Orange County, New York

OFFICIAL ZONING MAP

Date of Last Amendment: LL#3 of 2012, adopted 11 June 2012

This is the Official Zoning Map of the Town of Newburgh, last amended by Local Law #3 of 2012, adopted 11 June 2012, and certified as accurate on 26 September 2012. Signed copies are on file at the Orange County Department of Planning and at the Municipal Clerk's office.



Legend

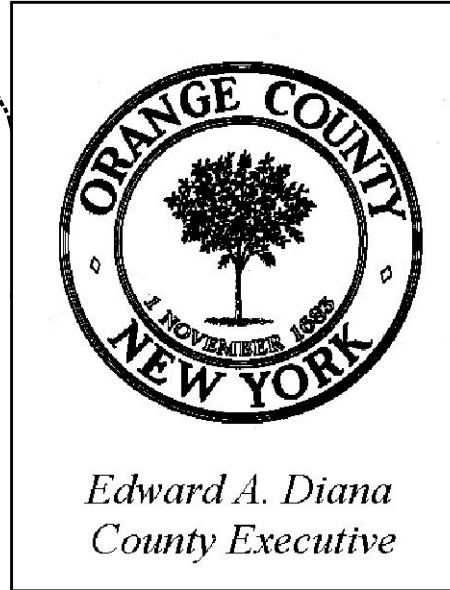
Hudson River	Interstate
Parcels	Federal Highway
Municipal Boundaries	State Route
Airport Overlay	County Road
	Local Road

Zoning Districts

RR, Reservoir	R3, Residential
AR, Agricultural	B, Business
R1, Residential	IB, Interchange Business
R2, Residential	I, Industrial

Professional Office Overlay (O)
 Marina Townhouse Overlay
 Self Storage Overlay
 LHI Overlay**

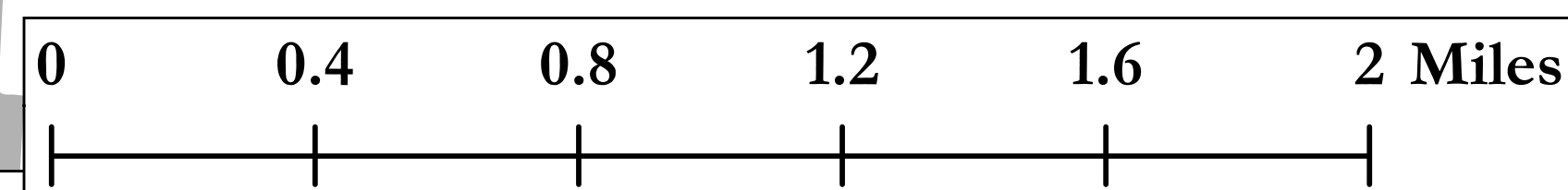
**Light and Heavy Equipment and Recreational Vehicle Sales, Service and Repair



Orange County Planning Department
 Map Update: 22 October 2012 by M.Ryan

The County of Orange makes no warranty whatsoever as to the accuracy or completeness of any information depicted on this map. Data depicted here may have been developed in cooperation with other County departments, as well as other Federal, State and Local government agencies. The County of Orange hereby disclaims liability for any loss or damage resulting from the use of the information and/or representations contained herein.

The locations of tax parcel lines are approximate only and are presented solely as a general aid in understanding their approximate location in relation to other mapped features. No reliance whatsoever should be placed on the tax parcel lines shown herein. The parcel lines are neither intended to nor are they representations of the County's official tax maps prepared and maintained by the County Real Property Tax Department.



NEW WINDSOR