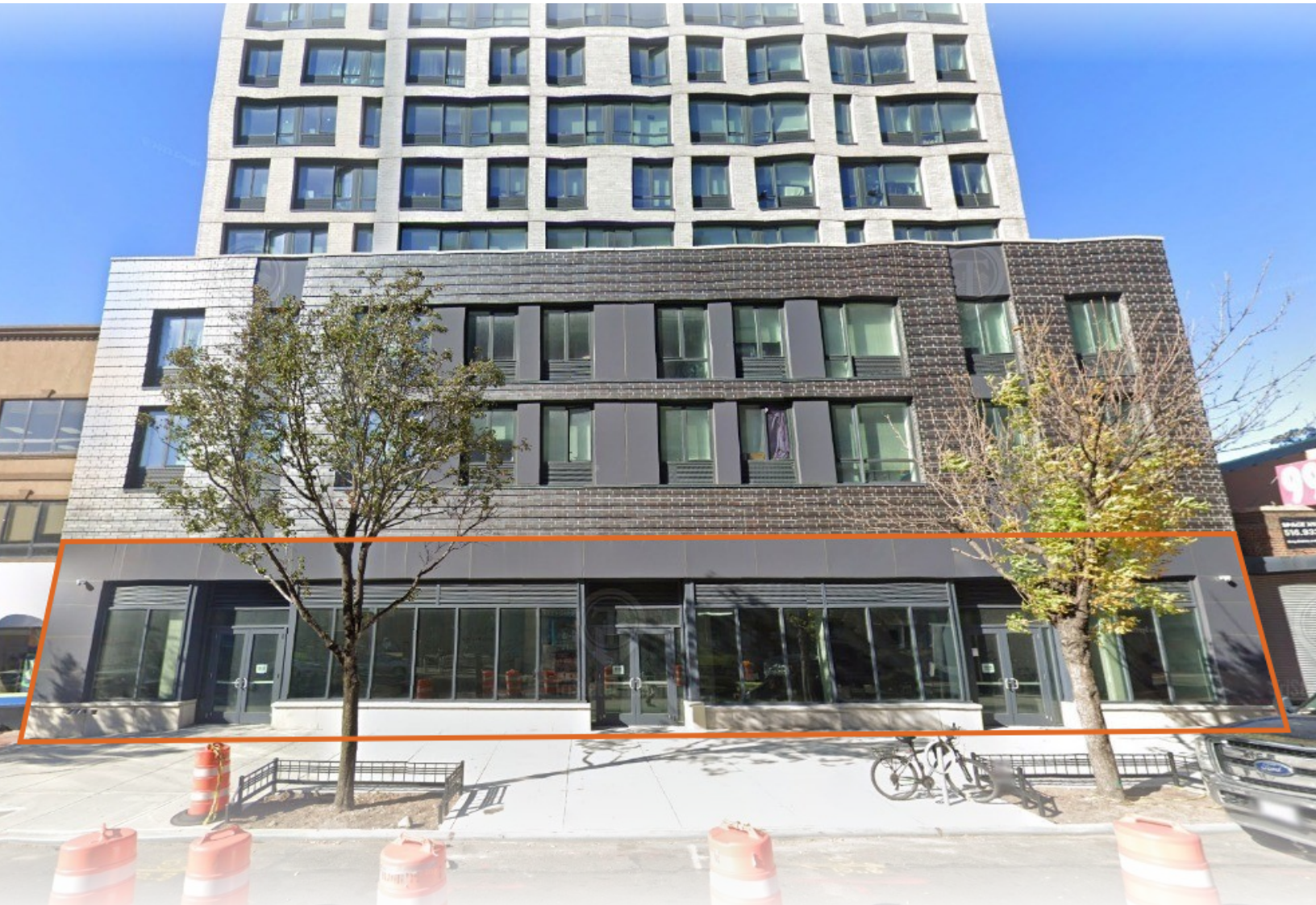




TRI STATE  
COMMERCIAL®  
REAL ESTATE EXPERTS

For Lease



# 100 Feet of Glass Frontage on Jamaica Ave for Lease

5,680 SF

153-25 Jamaica Avenue • Queens • NY

For Pricing **Call: 718-437-6100**

**Shlomi Bagdadi**  
☎ 718.437.6100  
sb@tristatecr.com

**Moshe Akiva**  
☎ 718.437.6100 x116  
Moshe.A@TriStateCR.com



## Location Overview

Located in the Jamaica neighborhood of Queens between 153rd St & Parsons Blvd near the Jamaica Center-Parsons/Archer subway station.

Nearest Transit: E & J train at Jamaica Center-Parsons/Archer and the Q6, Q9, Q8, Q41, & Q83 bus lines.

Nearby tenants include McDonald's, Dunkin', Chase Bank, Walgreens, Taco Bell, T-Mobile, CVS, Shake Shack, Primark, Blink Fitness, Golden Krust, Old Navy, Burlington, H&M, Panda Express, Jollibee, SNIPES, Rainbow Shops, and more!

## Main Highlights

- ▶ 100 ft of glass frontage
- ▶ 20 ft ceilings
- ▶ Black iron duct in place
- ▶ Divisions are possible



**131,550 SF**  
Total Building Size



**12,900 SF**  
Lot Size



**C6-3**  
Zoning

FOR LEASE • 5,680 SF • For Pricing

**Call: 718-437-6100**

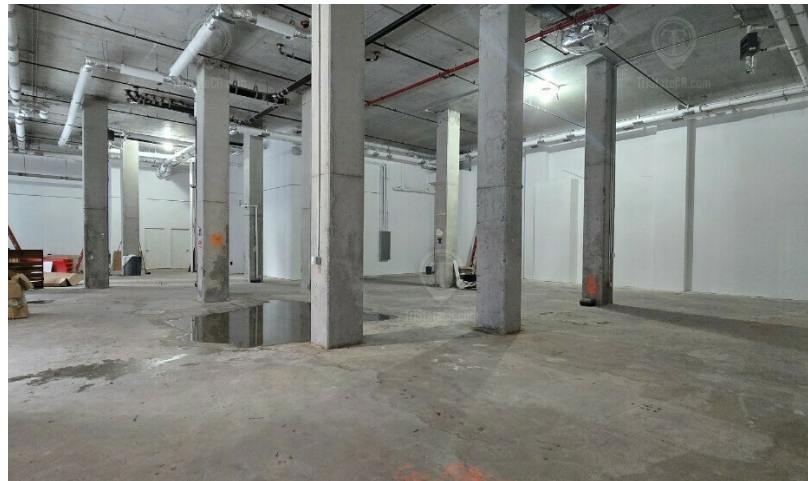
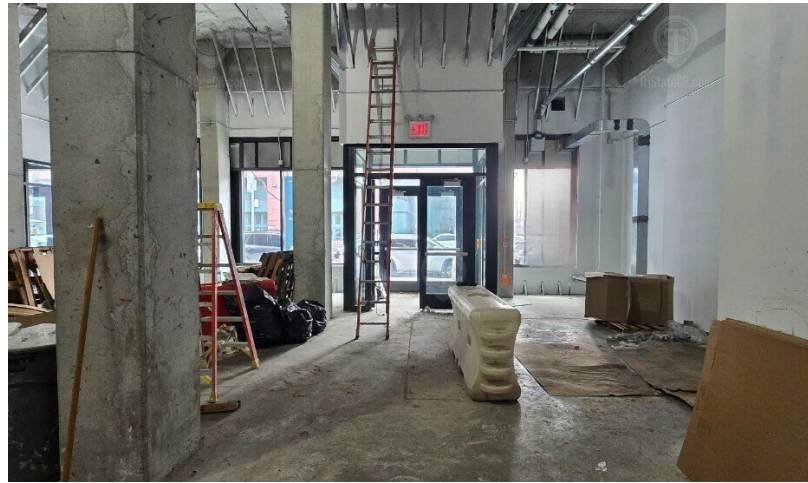
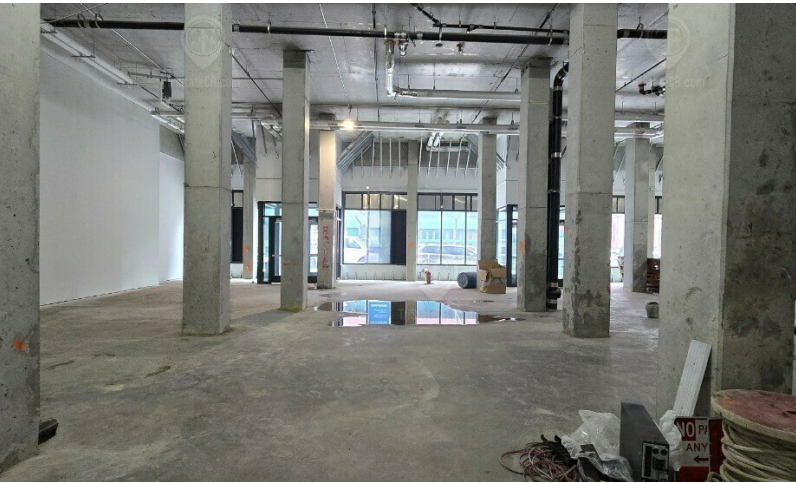
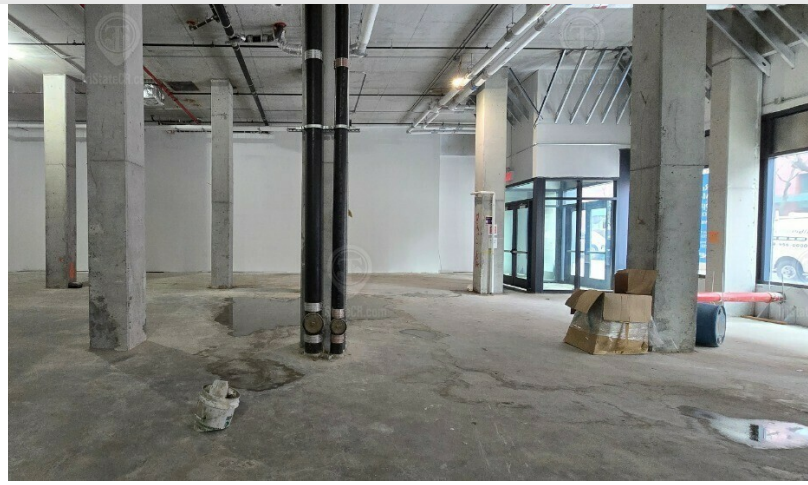
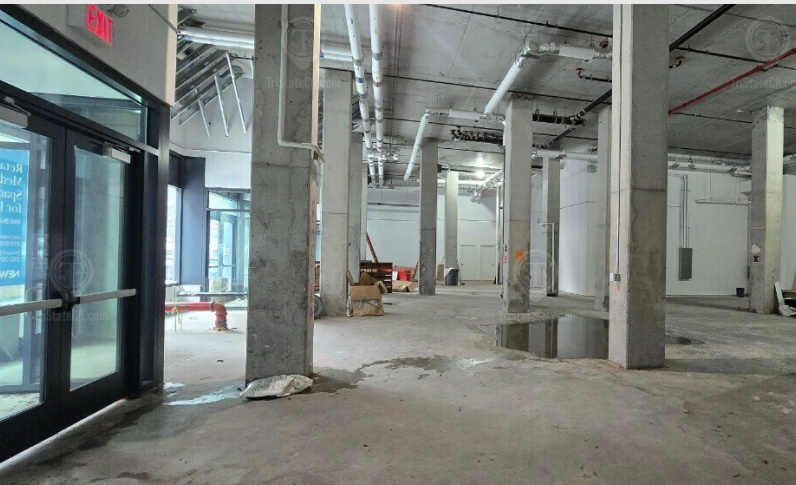
**Shlomi Bagdadi**  
☎ 718.437.6100  
sb@tristatecr.com

**Moshe Akiva**  
☎ 718.437.6100 x116  
Moshe.A@TriStateCR.com

Broker is relying on Landlord or other Landlord-supplied sources for the accuracy of said information and has no knowledge of the accuracy of it. Broker makes no representation and/or warranty, expressed or implied, as to the accuracy of such information.

# Additional Photos

153-25 Jamaica Avenue, Queens, NY 11432



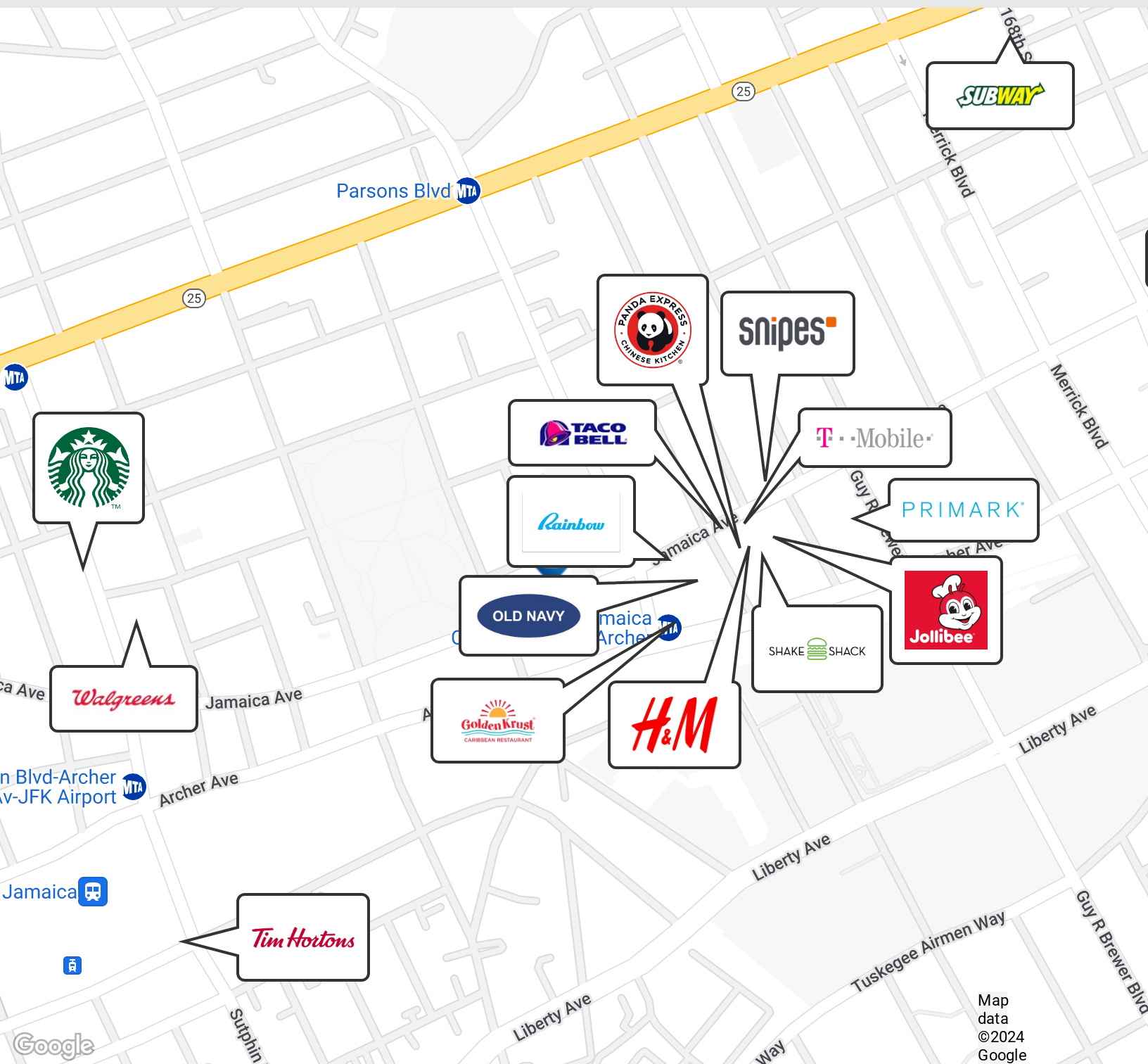
FOR LEASE • 5,680 SF • For Pricing

**Call: 718-437-6100**

**Shlomi Bagdadi**  
☎ 718.437.6100  
sb@tristatecr.com

**Moshe Akiva**  
☎ 718.437.6100 x116  
Moshe.A@TriStateCR.com

Broker is relying on Landlord or other Landlord-supplied sources for the accuracy of said information and has no knowledge of the accuracy of it. Broker makes no representation and/or warranty, expressed or implied, as to the accuracy of such information.



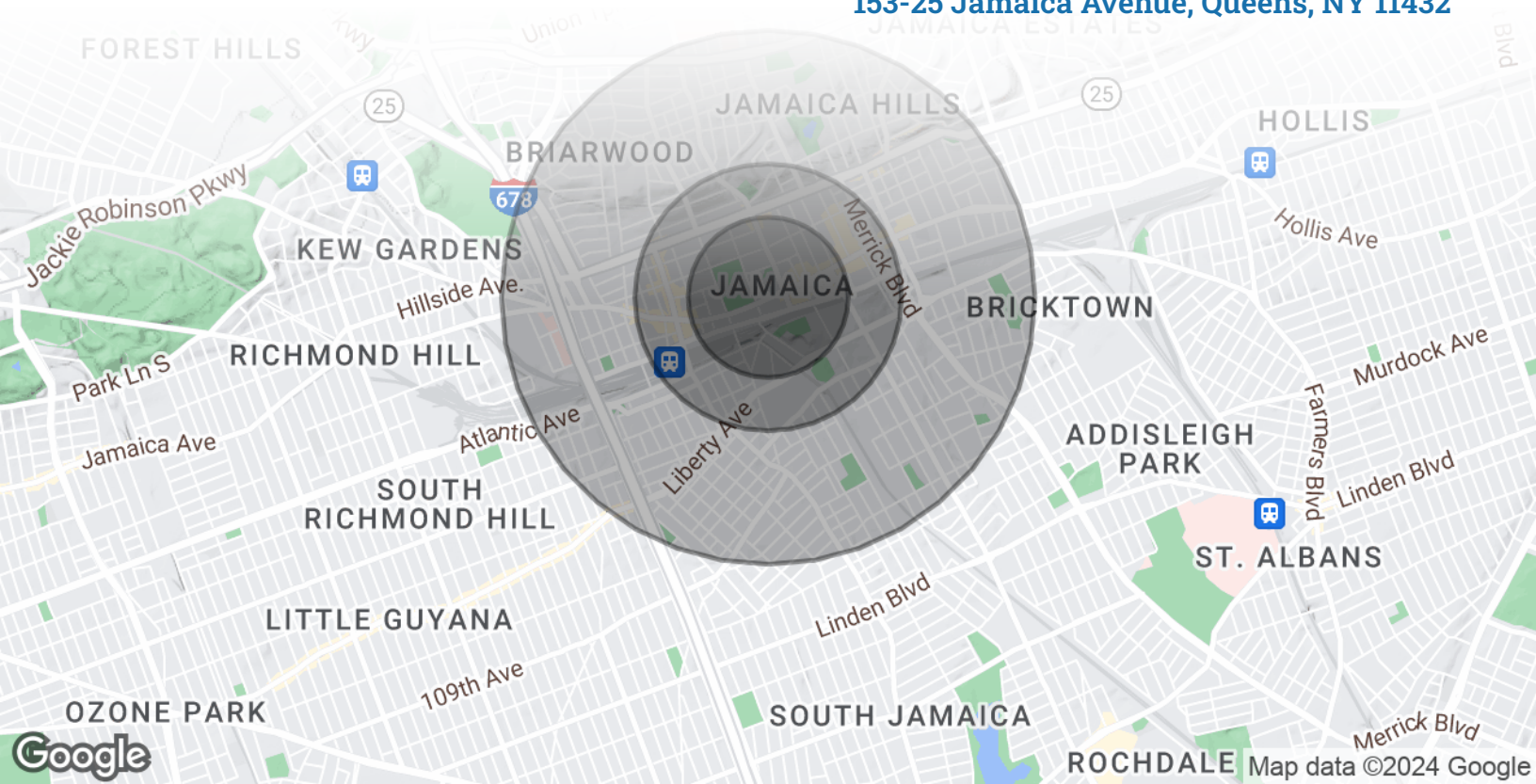
FOR LEASE • 5,680 SF • For Pricing

**Call: 718-437-6100**

**Shlomi Bagdadi**  
 ☎ 718.437.6100  
 sb@tristatecr.com

**Moshe Akiva**  
 ☎ 718.437.6100 x116  
 Moshe.A@TriStateCR.com

Broker is relying on Landlord or other Landlord-supplied sources for the accuracy of said information and has no knowledge of the accuracy of it. Broker makes no representation and/or warranty, expressed or implied, as to the accuracy of such information.



POPULATION	0.3 MILES	0.5 MILES	1 MILE
Total Population	8,618	29,966	115,287
Average Age	39	39	39
Average Age (Male)	39	38	38
Average Age (Female)	40	40	40
HOUSEHOLDS & INCOME	0.3 MILES	0.5 MILES	1 MILE
Total Households	3,016	9,812	35,708
# of Persons per HH	2.9	3.1	3.2
Average HH Income	\$73,619	\$78,679	\$90,792
Average House Value	\$565,162	\$666,946	\$744,879



**115,287**

People within 1 Mile



**\$90,792**

Avg Household Income

FOR LEASE • 5,680 SF • For Pricing

**Call: 718-437-6100**

**Shlomi Bagdadi**  
 📞 718.437.6100  
 sb@tristatecr.com

**Moshe Akiva**  
 📞 718.437.6100 x116  
 Moshe.A@TriStateCR.com

Broker is relying on Landlord or other Landlord-supplied sources for the accuracy of said information and has no knowledge of the accuracy of it. Broker makes no representation and/or warranty, expressed or implied, as to the accuracy of such information.

For Lease



**TriStateCR.com**

5,680 SF | 153-25 Jamaica Ave |  
100 Feet of Glass Frontage on  
Jamaica Ave for Lease

5,680 SF • For Pricing **Call: 718-437-6100**

153-25 Jamaica Avenue • Queens • NY

**Shlomi Bagdadi**

☎ 718.437.6100

sb@tristatecr.com

**Moshe Akiva**

☎ 718.437.6100 x116

Moshe.A@TriStateCR.com