

AVAILABLE FOR LEASE

**12,000 SF | INDUSTRIAL BUILDING**

**10,000 SF Ground fl + 2,000 2<sup>nd</sup> Fl offices**

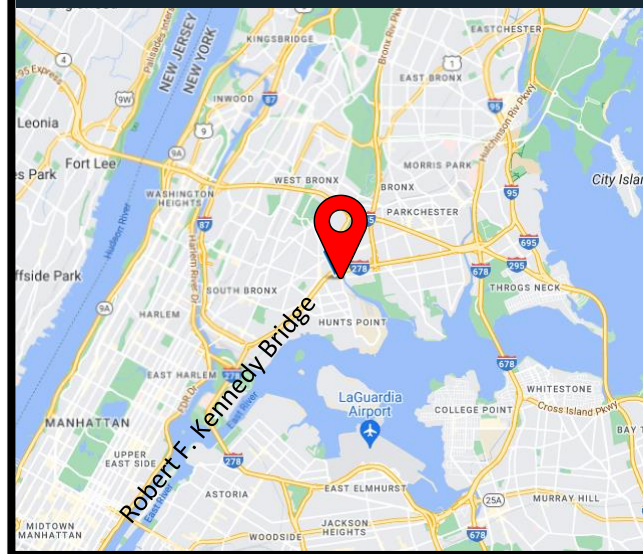
**891 Longfellow Ave, Hunts Point, Bronx, NY 10474**



**PROPERTY HIGHLIGHTS**

- 10,000 SF Ground Floor
- Ceiling Height: 16' (14' clear)
- 2 Overhead Doors
- 1 Interior Dock
- 2,000 SF 2nd Floor (Office Space)
- 2 Bathrooms
- Wet Sprinklers
- Gas Heat
- Zone: M1-25-10
- Minute Walk to Multiple Subway Lines

**CENTRALLY LOCATED IN HUNTS POINT.  
CLOSE TO MANHATTAN AND LA GUARDIA AIRPORT.**



**CONTACT AGENT**

**EITAN HAKAMI**

(917)-716-7751 (CELL)

(718) 786-5050 x215

[ehakami@greiner-maltz.com](mailto:ehakami@greiner-maltz.com)

**GREINER-MALTZ**  
REAL ESTATE

Creating Opportunities Together

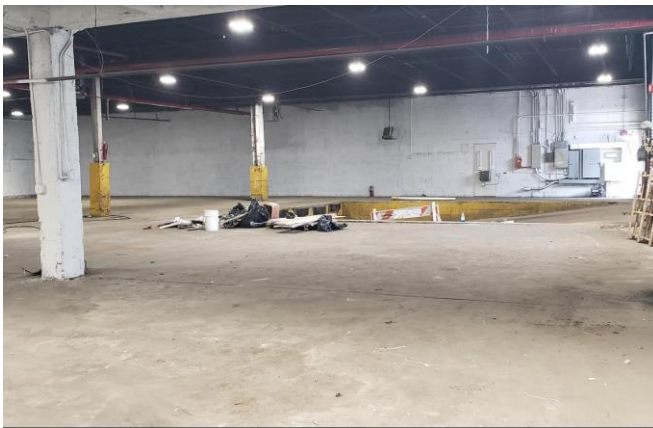
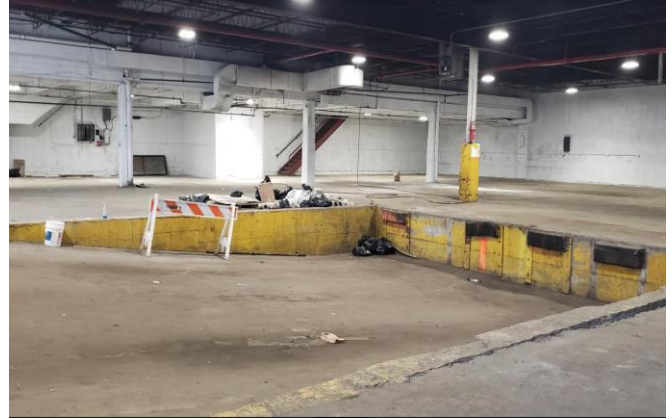
[WWW.GREINER-MALTZ.COM](http://WWW.GREINER-MALTZ.COM)

Any information set-forth herein has been obtained from sources deemed reliable, however, we have not verified it, and make no representation or warranty of any kind, including without limitation: condition: either latent or patent, size or manner of construction of the property, compliance with local law, and environmental conditions. All information submitted herein is subject to errors and omissions, and the right of our principal(s), to withdraw, modify, or condition the listing with-out prior notice. Broker cooperation encouraged.

AVAILABLE FOR LEASE

# 10,000 SF | INDUSTRIAL BUILDING LOCATED IN THE NEIGHBORHOOD OF HUNTS POINT!

891 Longfellow Ave, Hunts Point, Bronx, NY 10474, USA



## CONTACT AGENT

EITAN HAKAMI

(917)-716-7751 (CELL)

(718) 786-5050 x215

[ehakami@greiner-maltz.com](mailto:ehakami@greiner-maltz.com)

**GREINER-MALTZ**  
REAL ESTATE

Creating Opportunities Together

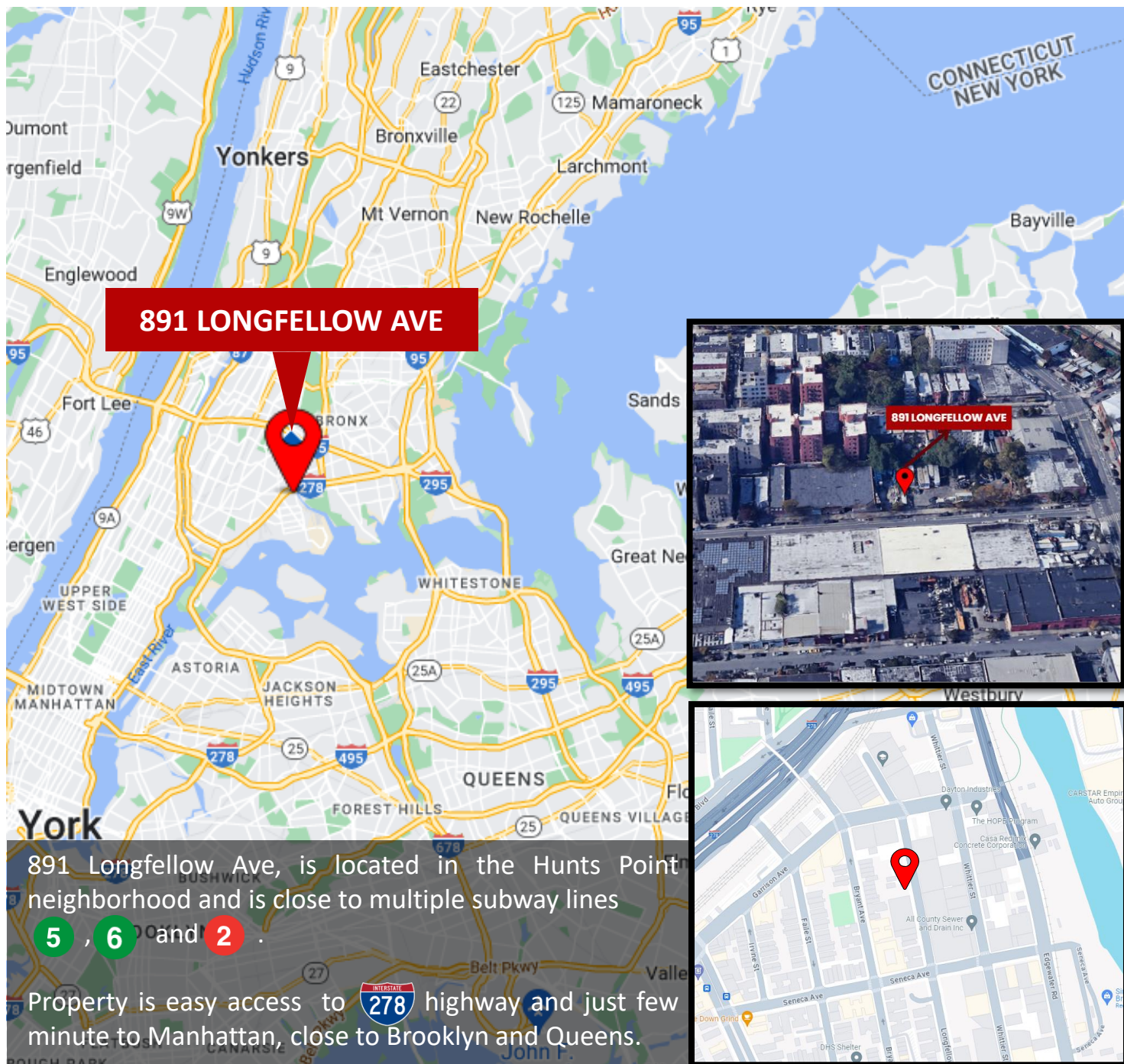
[WWW.GREINER-MALTZ.COM](http://WWW.GREINER-MALTZ.COM)

Any information set-forth herein has been obtained from sources deemed reliable, however, we have not verified it, and make no representation or warranty of any kind, including without limitation: condition: either latent or patent, size or manner of construction of the property, compliance with local law, and environmental conditions. All information submitted herein is subject to errors and omissions, and the right of our principal(s), to withdraw, modify, or condition the listing with-out prior notice. Broker cooperation encouraged.

AVAILABLE FOR LEASE

# 15,053 SF | INDUSTRIAL BUILDING LOCATED IN THE NEIGHBORHOOD OF HUNTS POINT!

891 Longfellow Ave, Bronx, NY 10474, USA



891 Longfellow Ave, is located in the Hunts Point neighborhood and is close to multiple subway lines

**5**, **6** and **2**

Property is easy access to **278** highway and just few minute to Manhattan, close to Brooklyn and Queens.

## CONTACT AGENT

**EITAN HAKAMI**

(917)-716-7751 (CELL)

(718) 786-5050 x215

[ehakami@greiner-maltz.com](mailto:ehakami@greiner-maltz.com)

**GREINER-MALTZ**  
REAL ESTATE

Creating Opportunities Together

[WWW.GREINER-MALTZ.COM](http://WWW.GREINER-MALTZ.COM)

Any information set-forth herein has been obtained from sources deemed reliable, however, we have not verified it, and make no representation or warranty of any kind, including without limitation: condition: either latent or patent, size or manner of construction of the property, compliance with local law, and environmental conditions. All information submitted herein is subject to errors and omissions, and the right of our principal(s), to withdraw, modify, or condition the listing with-out prior notice. Broker cooperation encouraged.