

950 CORPORATE OFFICE DR

950 Corporate Office Dr, Milford, MI 48381



FOR LEASE

248.476.3700

EXCLUSIVELY LISTED BY:

PAUL GOBEILLE

Senior Vice President

pgobeille@thomasduke.com

OFFERING SUMMARY: 950 Corporate Office Dr | Milford, MI 48381



PROPERTY OVERVIEW

3,500 SF usable space, with private kitchenette and mailroom. Several windows to bring in natural light throughout the building. Peak ceilings create open feel. Quiet location with easy access to main roads, and close to I-96.

OFFERING SUMMARY

Lease Rate: \$12.00 SF/yr (NNN)
Building Size: 16,325 SF
Available SF: 3,500 SF
Year Built: 2001
Zoning: CI- Local Business

PROPERTY HIGHLIGHTS

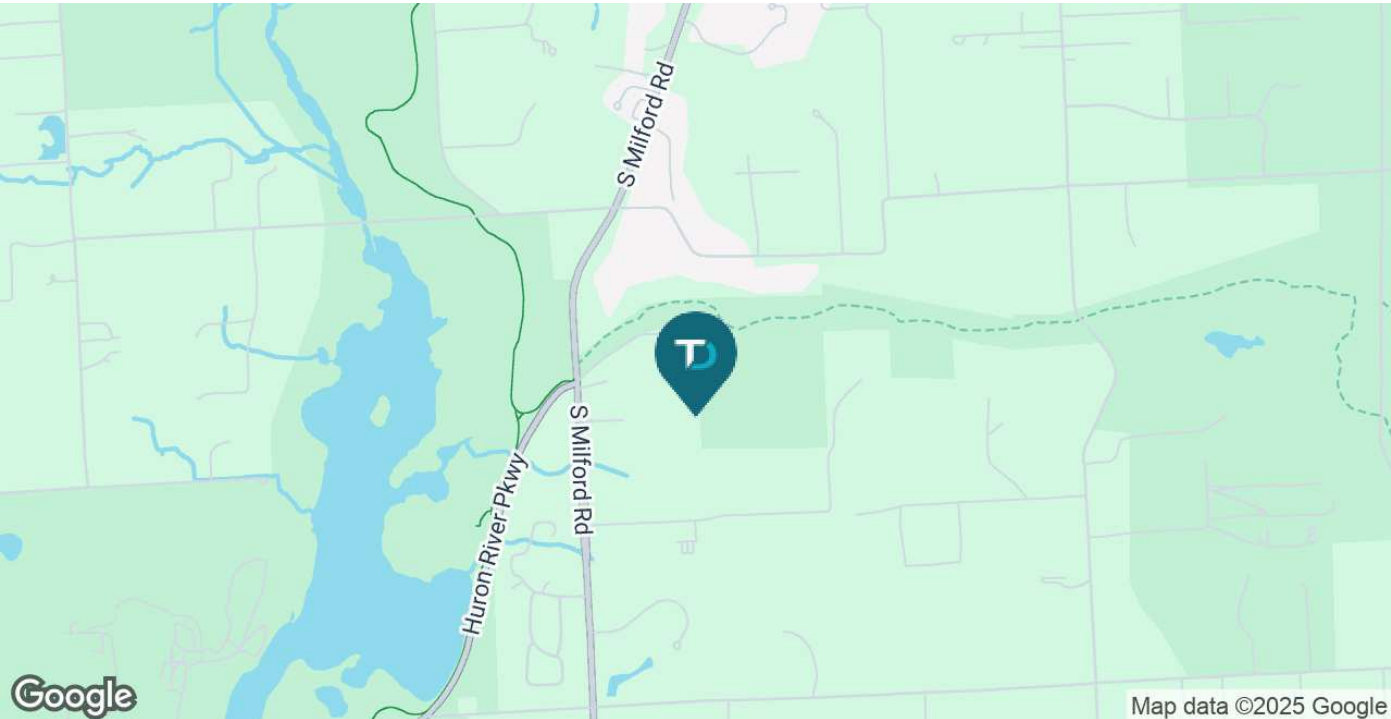
- Quiet Location just behind Baker's Restaurant with Ample Parking for Customers
- Building & Common Areas Meticulously Maintained and Offer Shared Restroom Outside of Main Suite
- Private Kitchenette and Mailroom
- Expansive Suite features 12 Private Offices and Open Area- Perfect for Conference Set up or Additional Workstations
- Several Windows Bring in Natural Light Throughout
- Conveniently located off Milford Rd with Easy Access to Downtown Milford & I-96

BUILDING/PROPERTY INFORMATION:
950 Corporate Office Dr | Milford, MI 48381

BUILDING INFORMATION		PROPERTY INFORMATION	
Price/SF:	\$12.00	Property Type:	Office
Building Size:	16,325 SF	Property Subtype:	Office Building
Year Built:	2001	2024 Taxes:	\$26,728
Number of Floors:	1	Zoning	CI
Parking Spaces:	102	Traffic Count:	S Milford Rd- 20,204; Huron F Pkwy- 7,932 VPD
Parking Ratio:	6.25	Legal Description:	T2N, R7E, SEC 22 OAKLAND COUNTY CONDOMINIUM PL NO 1760 MILFORD CORPORATE OFFICE PARK UNIT 4 L 35830 P 455 7-12-0 FR 051
		APN:	16-22-102-055

LOCATION INFORMATION

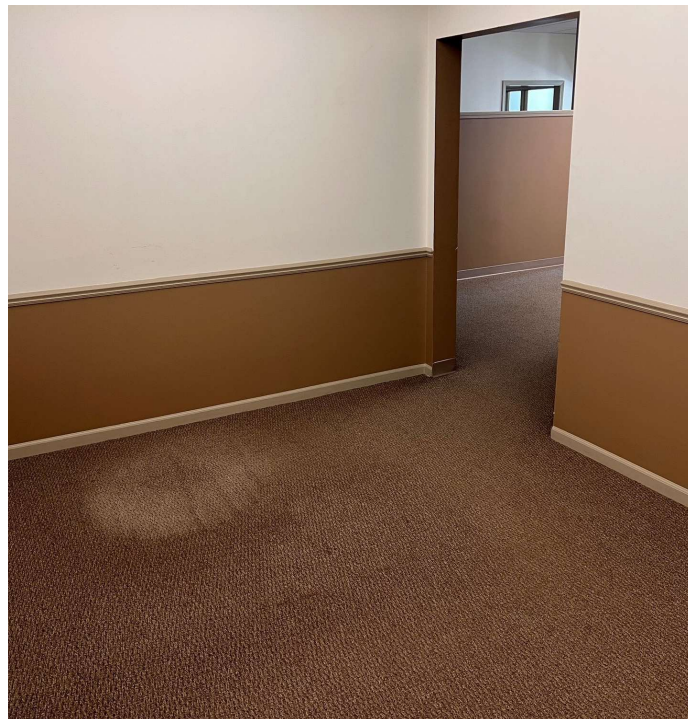
Located on east side of Milford Rd, just north of Holden Ave.



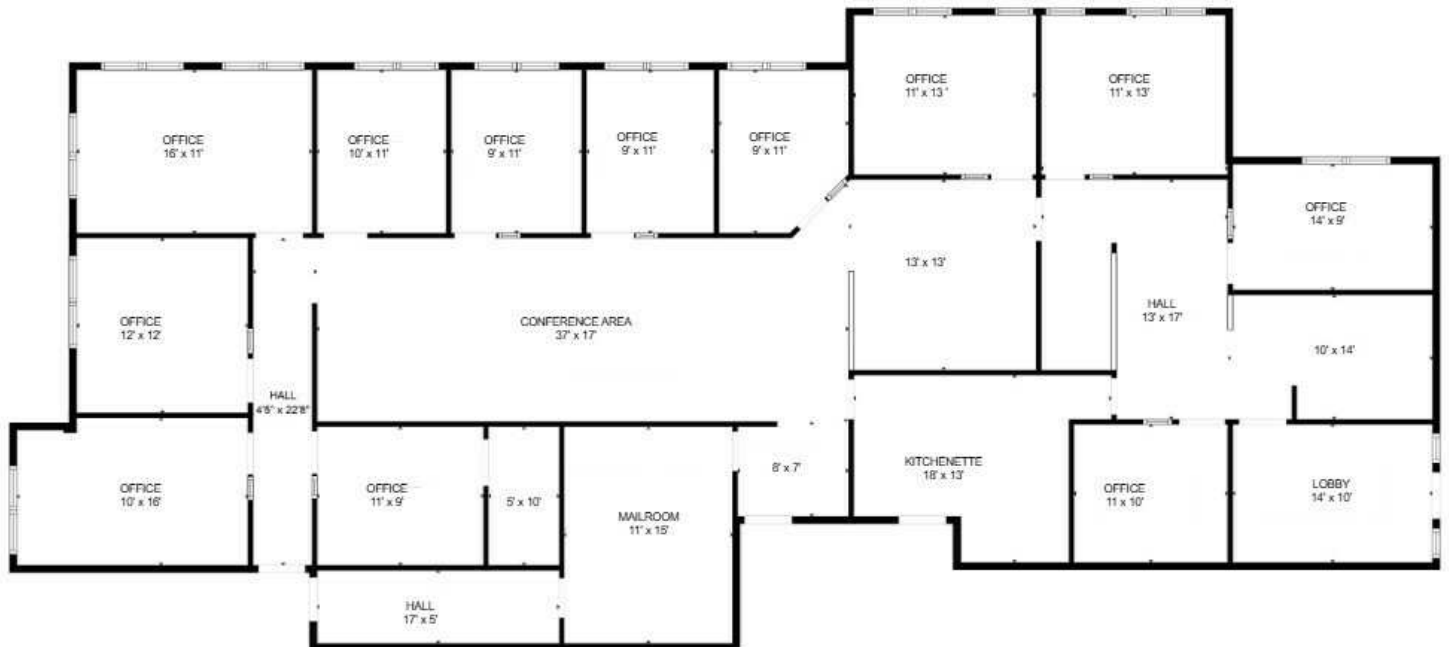
ADDITIONAL PHOTOS: 950 Corporate Office Dr | Milford, MI 48381



ADDITIONAL PHOTOS: 950 Corporate Office Dr | Milford, MI 48381



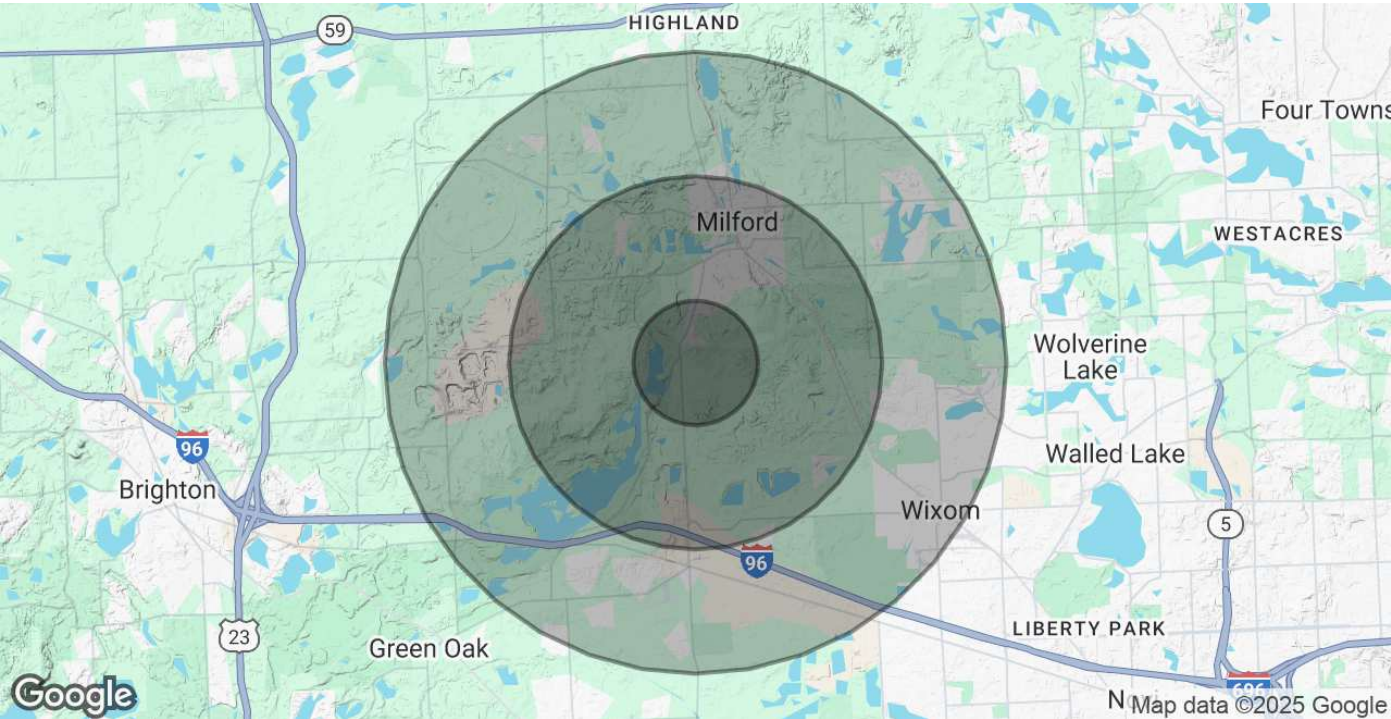
FLOOR PLANS: 950 Corporate Office Dr | Milford, MI 48381



RETAILER MAP: 950 Corporate Office Dr | Milford, MI 48381



DEMOGRAPHICS MAP & REPORT: 950 Corporate Office Dr | Milford, MI 48381



POPULATION	1 MILE	3 MILES	5 MILES
Total Population	1,104	14,772	47,474
Average Age	45	44	42
Average Age (Male)	45	43	41
Average Age (Female)	45	45	43
HOUSEHOLDS & INCOME	1 MILE	3 MILES	5 MILES
Total Households	401	5,926	18,093
# of Persons per HH	2.8	2.5	2.6
Average HH Income	\$167,368	\$144,370	\$147,969
Average House Value	\$557,809	\$443,077	\$422,136
Demographics data derived from AlphaMap			