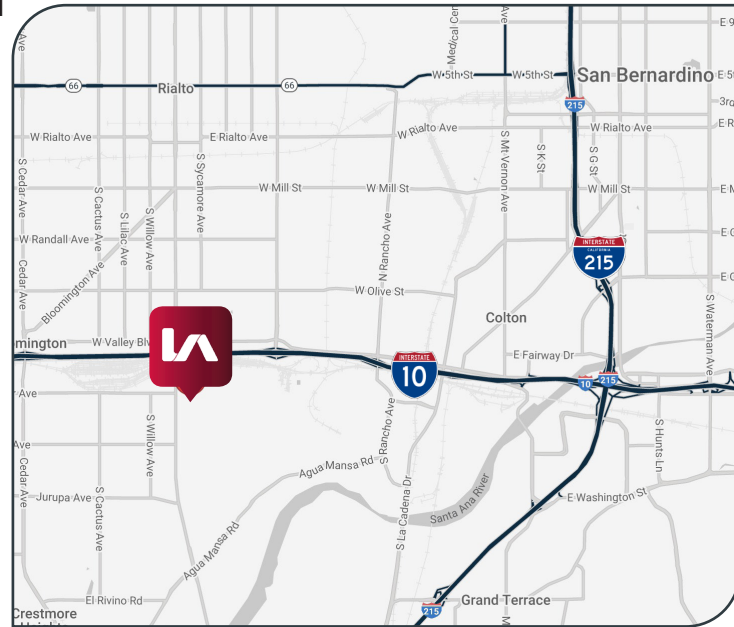


**TWO STORY OFFICE | STORAGE CONTAINERS  
ON ±1.03 ACRES OF LAND FOR LEASE**



**2005 S. DATE AVENUE, RIALTO, CA 92316**

- Office/Contractors Truck Yard on ±1.03 Acres of Land
- Large Fenced, Lighted Landscaped
- ±1,200 SF of Two -Story Office Space
- ±1,600 SF of Shop Office and Parts room
- 200 Amps 120/240V, 3 Phase
- Pole Shed Truck Maintenance Area
- Zone H-IND (City of Rialto)
- Truck Use Approved



FOR MORE INFORMATION PLEASE CONTACT:

**JOHN MULROONEY**  
D 909.373.2928  
jmulrooney@lee-assoc.com  
DRE #00839176

**Lee & Associates® - Ontario**  
3535 Inland Empire Blvd, Ontario, CA 91764 | 909.989.7771 | lee-assoc.com  
Corp ID 00976995

All information furnished regarding property for sale, rental or financing is from sources deemed reliable, but no warranty or representation is made to the accuracy thereof and same is submitted to errors, omissions, change of price, rental or other conditions prior to sale, lease or financing or withdrawal without notice. No liability of any kind is to be imposed on the broker herein.

**TWO STORY OFFICE | STORAGE CONTAINERS  
ON ±1.03 ACRES OF LAND FOR LEASE**



FOR MORE INFORMATION PLEASE CONTACT:

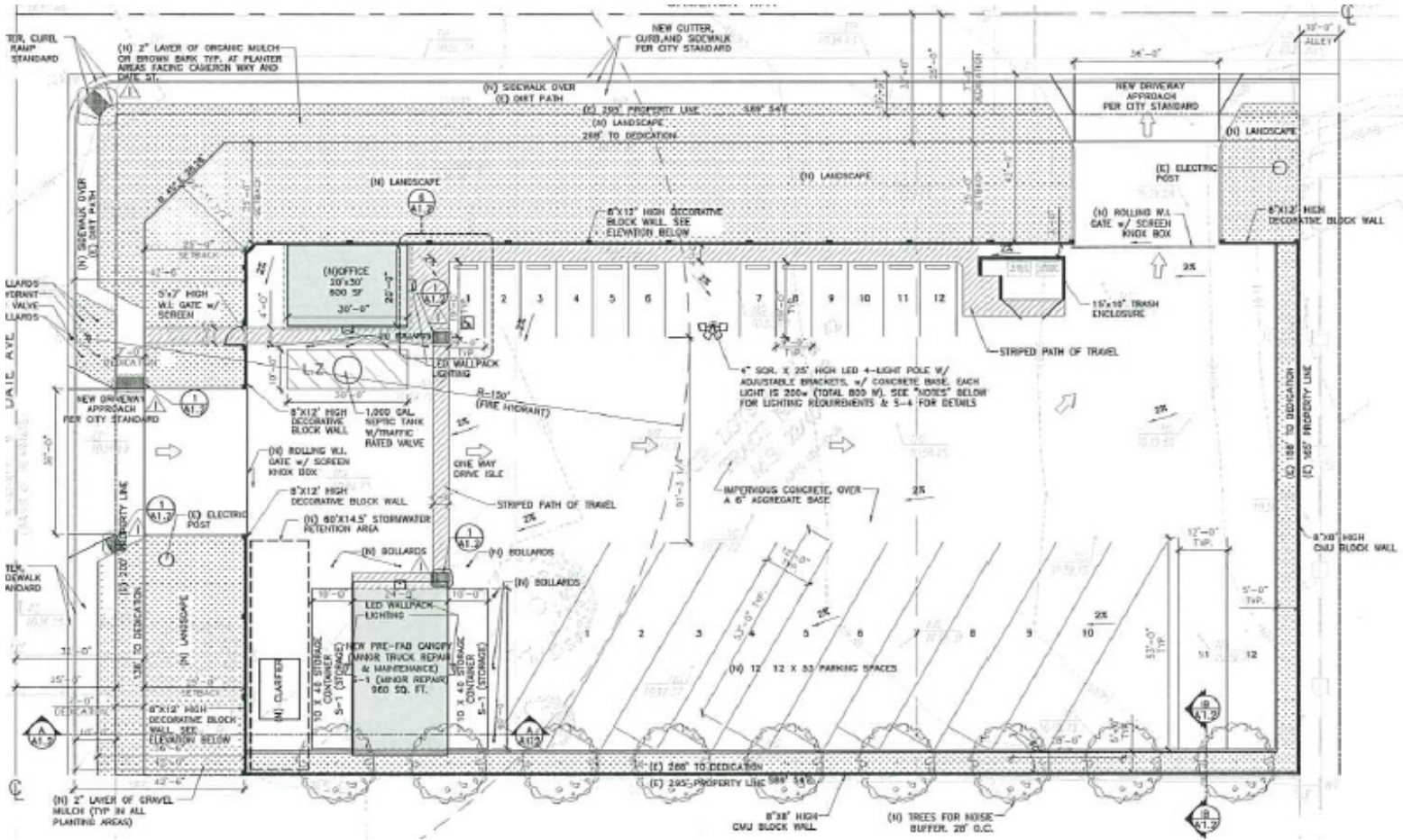
**JOHN MULROONEY**  
D 909.373.2928  
jmulrooney@lee-assoc.com  
DRE #00839176

**Lee & Associates® - Ontario**  
3535 Inland Empire Blvd, Ontario, CA 91764  
Corp ID 00976995

| 909.989.7771 | lee-assoc.com

All information furnished regarding property for sale, rental or financing is from sources deemed reliable, but no warranty or representation is made to the accuracy thereof and same is submitted to errors, omissions, change of price, rental or other conditions prior to sale, lease or financing or withdrawal without notice. No liability of any kind is to be imposed on the broker herein.

# TWO STORY OFFICE | STORAGE CONTAINERS ON ±1.03 ACRES OF LAND FOR LEASE



FOR MORE INFORMATION PLEASE CONTACT:

**JOHN MULROONEY**  
 D 909.373.2928  
 jmulrooney@lee-assoc.com  
 DRE #00839176



Lee & Associates® - Ontario  
 3535 Inland Empire Blvd, Ontario, CA 91764  
 Corp ID 00976995

| 909.989.7771 | lee-assoc.com

All information furnished regarding property for sale, rental or financing is from sources deemed reliable, but no warranty or representation is made to the accuracy thereof and same is submitted to errors, omissions, change of price, rental or other conditions prior to sale, lease or financing or withdrawal without notice. No liability of any kind is to be imposed on the broker herein.

**TWO STORY OFFICE | STORAGE CONTAINERS  
ON ±1.03 ACRES OF LAND FOR LEASE**



FOR MORE INFORMATION PLEASE CONTACT:

**JOHN MULROONEY**  
D 909.373.2928  
jmulrooney@lee-assoc.com  
DRE #00839176