

414 E. MAIN STREET
LOWELL, MICHIGAN

OFFICE FOR SUBLEASE
2,980 Square Feet Available



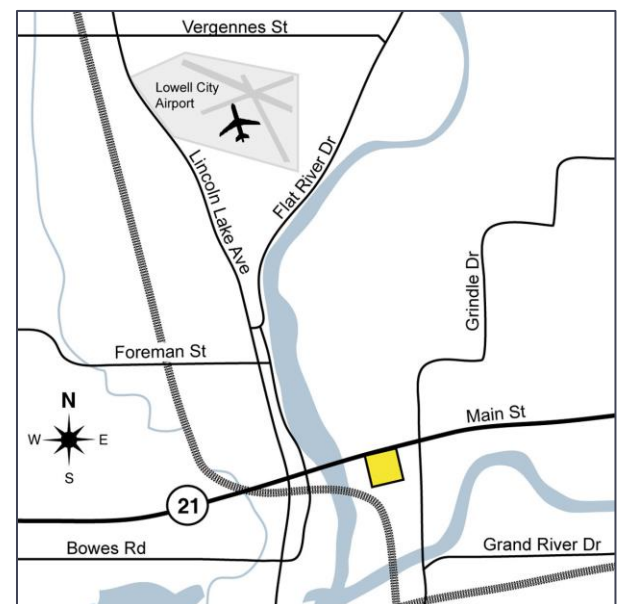
**SIGNATURE
ASSOCIATES**
KNOW SIGNATURE | KNOW RESULTS

OFFICE & RETAIL ON M-21



PROPERTY FEATURES

- 10,856 total building square feet
- 2,980 square feet available for sublease
- Built out with perimeter offices along the windows
- Ample parking
- Separate entrance from bank
- Located on 1.502 acres
- 195' of frontage on Main Street/M-21
- Security system in place
- Lease Rate: \$14.00/sf NNN (\$3,477/mo)



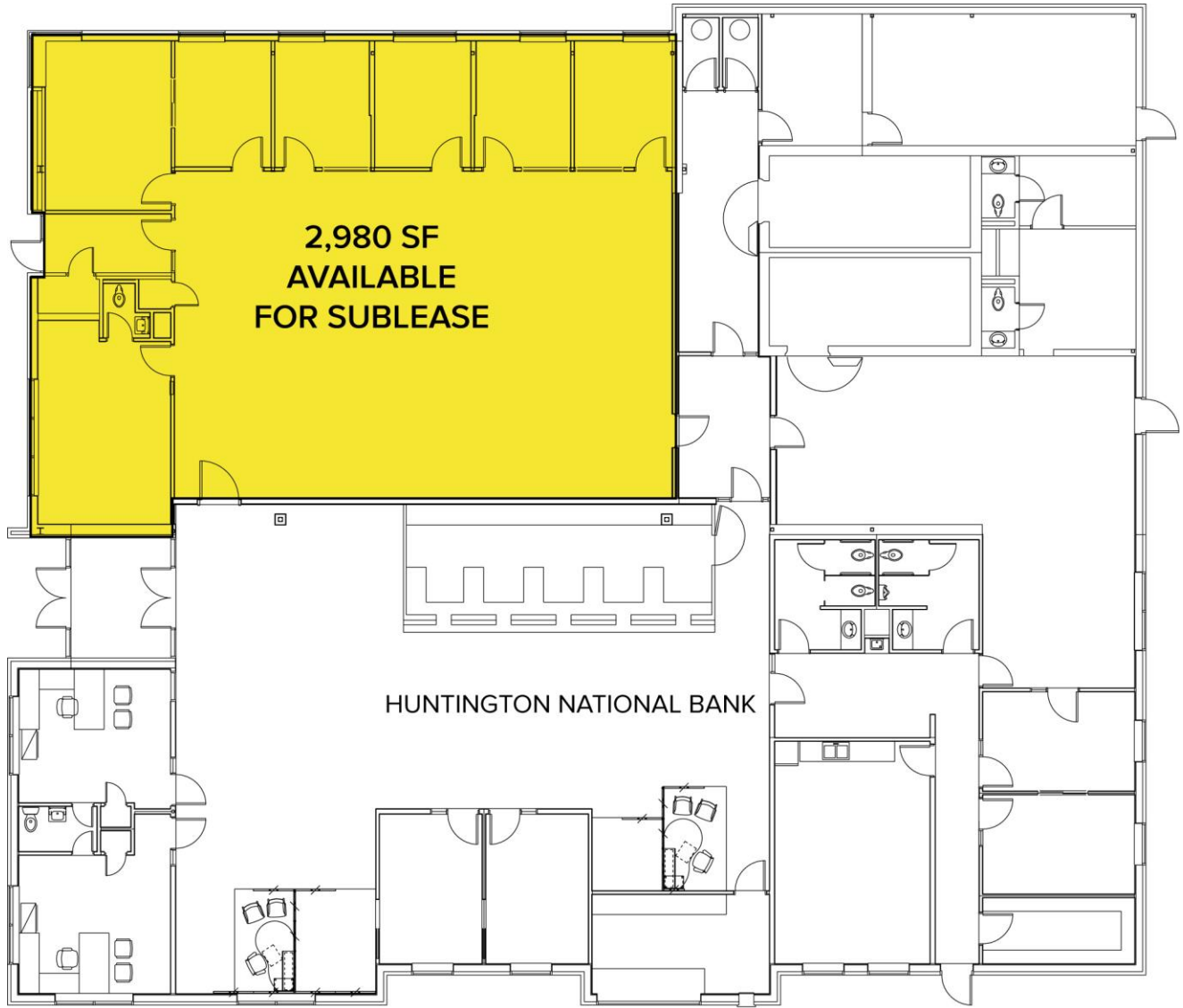
For more information, please contact:

JOE RIZQALLAH
(616) 822 6310
jrizqallah@signatureassociates.com

PETER CACHEY
(616) 259 6386
pcachey@signatureassociates.com

SIGNATURE ASSOCIATES
1188 East Paris Ave, Suite 220
Grand Rapids, MI 49546
www.signatureassociateswm.com

Floor Plan



For more information, please contact:

JOE RIZQALLAH

(616) 822 6310

jrizqallah@signatureassociates.com

PETER CACHEY

(616) 259 6386

pcachey@signatureassociates.com

SIGNATURE ASSOCIATES

1188 East Paris Ave, Suite 220

Grand Rapids, MI 49546

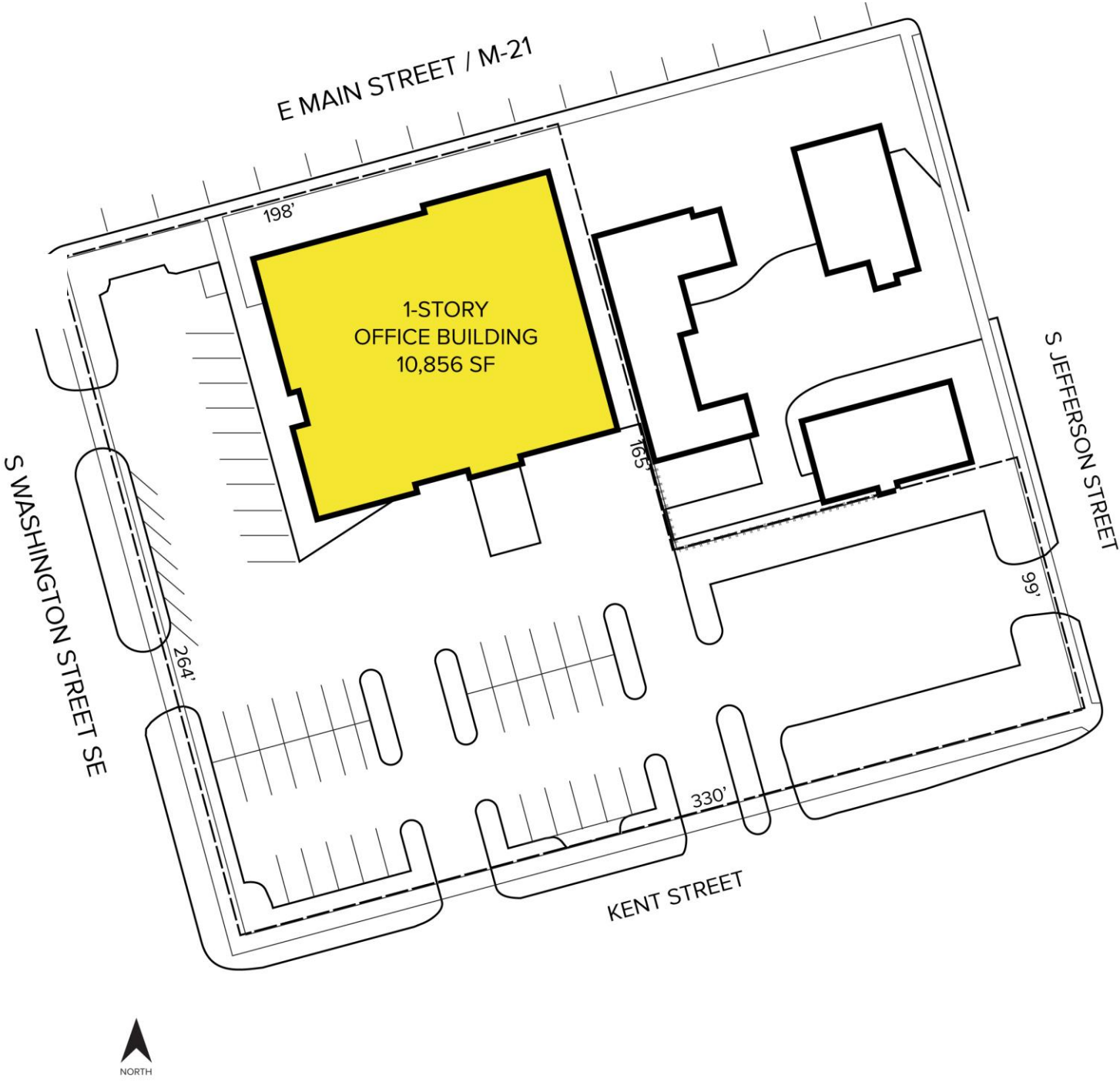
www.signatureassociateswm.com

414 E. Main Street – Lowell, Michigan

Office For Sublease

2,980
Square Feet
AVAILABLE

Site Plan



For more information, please contact:

JOE RIZQALLAH
(616) 822 6310
jrizqallah@signatureassociates.com

PETER CACHEY
(616) 259 6386
pcachey@signatureassociates.com

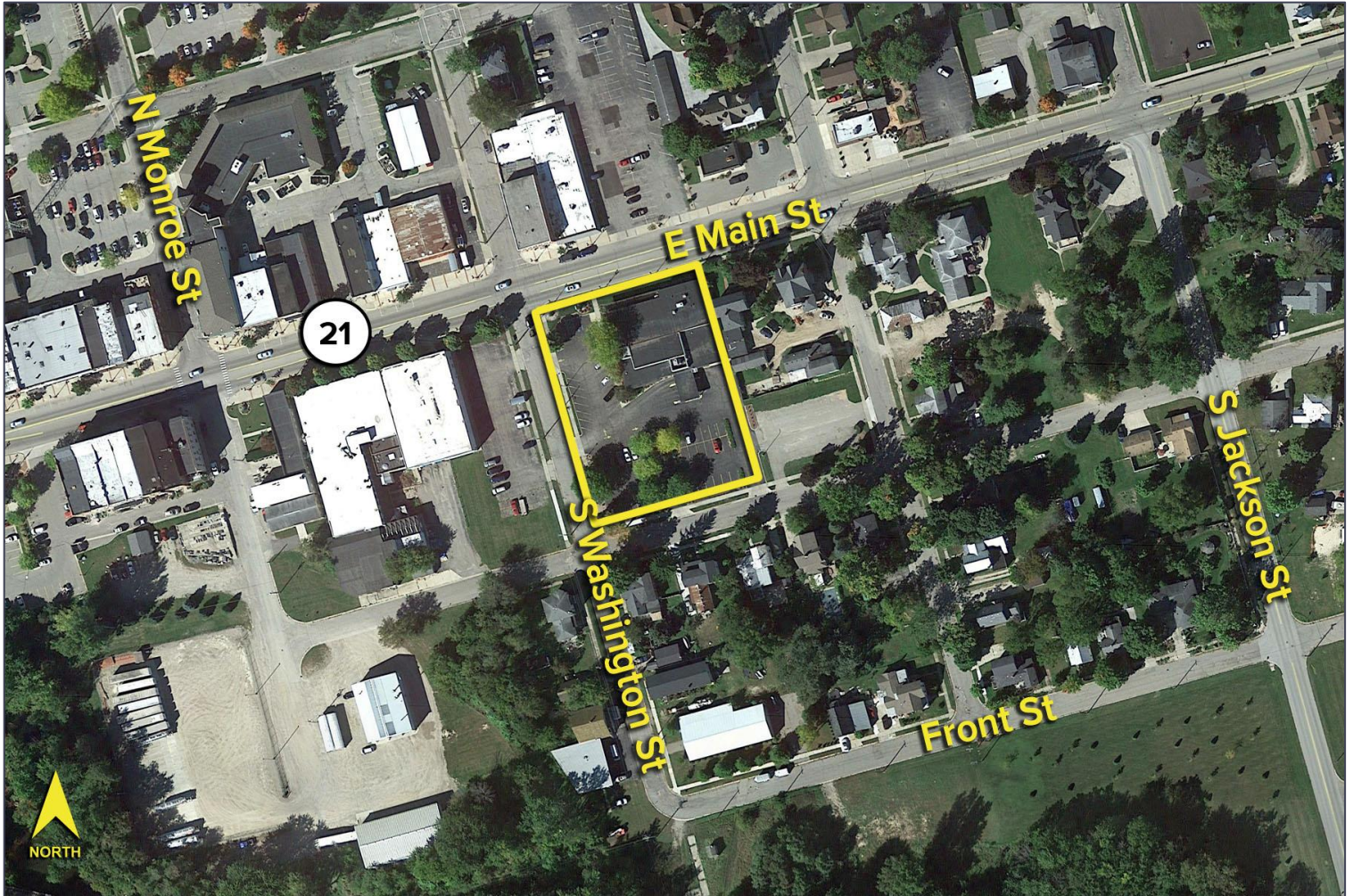
SIGNATURE ASSOCIATES
1188 East Paris Ave, Suite 220
Grand Rapids, MI 49546
www.signatureassociateswm.com

Information is subject to verification and no liability for errors or omissions is assumed. Price is subject to change and listing withdrawal.

414 E. Main Street – Lowell, Michigan
Office For Sublease

2,980
Square Feet
AVAILABLE

Aerial



For more information, please contact:

JOE RIZQALLAH

(616) 822 6310

jrizzqallah@signatureassociates.com

PETER CACHEY

(616) 259 6386

pcachey@signatureassociates.com

SIGNATURE ASSOCIATES

1188 East Paris Ave, Suite 220

Grand Rapids, MI 49546

www.signatureassociateswm.com